

Tips *and* Trips



The Georgia Mineral Society

Atlanta, Georgia

Volume XXXVI/Four

April 2007

President's Message

Spring is here. The weather has warmed up. We are getting out more to collect. The temperatures are not high enough to worry about overheating, but there is a lot out there to beware. The vines are growing which can cause tripping problems or hide gullies. The briars are out to snag your clothes and cut your face, hands, and arms. The stump holes are always there. This is one of my big fears. It is easy to step into one and break a leg. The snakes, wasps, and bees are moving around. Ticks are something to be aware of. Be careful out there. Have a great time collecting.

*Thank you,
Kim Cochran,
President*

Adopt-a-Highway Report

We will gather on 7 April at 9:00 AM for the annual Easter trash pickup and Easter egg hunt. Please plan on coming out to help keep the Ballground portion of Highway 5 clean and attractive for passing mineral collectors and bikers.

There will be a field trip to the Cochran Mine in Ballground after the clean-up for large skori tourmaline, muscovite mica books and maybe some bits of golden beryl.

We will leave from Two Brothers BBQ in Ballground after lunch and go to the Cochran Mine for an afternoon of collecting. We will follow the AFMS Code of Ethics during the trip.

Hope to see you there.

*Bill Waggener,
Adopt-a-Highway Chair*



General Meeting

7:30 PM Monday, April 2, 2007
Chamblee Library
4115 Clairmont Road
Atlanta, GA 30341
770.936.1380



"THAR'S GOLD IN DEM DARE HILLS!"

April's guest speaker will be our own President, Kim Cochran. He will give a talk on the history, mining and uses of gold. This glimmering metal, the cause of the first gold rush in the United States (Dahlonega, GA) has fascinated humans and a few birds for thousands of years.

Kim will bring some samples of gold, including Georgia gold. He'll talk about the mineralogy, and he'll throw in fun facts to know and tell.

He promises this discussion will be "brilliant, enchanting and illuminating" or your money back! Don't miss this one or you'll feel like a "fool's gold."

*Anita D. Westlake,
Vice President, Programs*



The Georgia Mineral Society, Inc.
A Non-Profit Educational Organization
Seventy Years of Tradition
Objective and Purpose
To Educate the Youth of the State
and the Members of this Society
In the Field of Earth Science



AFMS Education - All American Club 2003

President
 Kim Cochran
 2695 Van Court
 Snellville, GA 30278
 770.979.8331

Executive VP/Membership
 Lizabeth McClain
 4000 Lindley Circle
 Powder Springs, GA 30127
 770.439.5756
membership@gaminerall.org

Vice President/Programs
 Anita Westlake
 1253 Spencer Drive
 East Point, GA 30344
 404.761.7849
programs@gaminerall.org

Secretary
 Mary Porter
 196 High Creek Drive
 Roswell, GA
 770.998.1018
secretary@gaminerall.org

Treasurer
 Dylan Porter
 196 High Creek Drive
 Roswell, GA
 770.998.1018
treasurer@gaminerall.org

Gem Section Chair
 Kim Cochran
 2695 Van Court
 Snellville, GA 30278
 770.979.8331

Mineral Section Chair
 Julian C. Gray
 524 Robin Lane
 Marietta, GA 30067
 770.973.3632
minerals@gaminerall.org

Fossil Section Chair
 Martha Brown
 4837 Greenway Road
 Norcross, GA 30071
 770.448.0876
fossils@gaminerall.org

Junior Section Chair
 Roxanne Lopez
 1711 Donna Lynn Drive
 Smyrna, GA 30080
 770.436.0387
juniors@gaminerall.org

Micromount Section Chair
 Dave Babulski
 2677 Colony Circle
 Snellville, GA 30078
 678.580.2475
micromount@gaminerall.org

Immediate Past President
 Kim Cochran
 2695 Van Court
 Snellville, GA 30278
 770.979.8331

Trustee to 2007
 Bill Waggener
 9146 Sunset Drive
 Jonesboro, GA 30238
 770.478.5734
wqwaggenerii@bellsouth.net

Trustee to 2008
 Patricia Joan White
 9146 Sunset Drive
 Jonesboro, GA 30238-4520
 770.478.5734
jowhite@bellsouth.net

Trustee to 2009
 Eva Ostrofsky
 1402 Arbor Lake Court
 Hoschton, GA 30548
 678-425-2573
jowhite@bellsouth.net

Tips & Trips Editor
 Patricia Joan White
 9146 Sunset Drive
 Jonesboro, GA 30238-4520
 770.478.5734
newsletter@gaminerall.org

Field Trip Co-Chair
 George Libby
 1730 Rhett Butler Dr.
 Lilburn, GA 30047
 770.978.2117
fieldtrips@gaminerall.org

Field Trip Co-Chair
 Greg Grieves
 1760 Northside Drive, Apt. 119
 Atlanta, GA 30318
 404.314.8143

May Show Chair
 Jay Gorday
 1690 Granger Court
 Chamblee, GA 30341
 770.986.0822
mayshow@gaminerall.org

Webmaster
 Jim Flora
 P.O. Box 605
 Hiawassee, GA 30546
 706.896.8040
webmaster@gaminerall.org

Education Chair
 Bill Waggener
 9146 Sunset Drive
 Jonesboro, GA 30238
 770.478.5734
education@bellsouth.net

Committee Chairs

Adopt-A-Highway	Bill Waggener	770.478.5734
Assets/Equipment	Barbara Libby	770.978.2117
Awards	Joan White	770.478.5734
Building	John Trimble	828.264.4811
Curator/Gem Box	Kim Cochran	770.979.8331
Facilities	Open to Volunteers	
Historian	Roxanne Lopez	770.436.0387
Hospitality	Margaret Ronan	404.636.0720
Librarian	Julian C. Gray	770.888.9331
Parliamentarian	Joan White	770.478.5734
Refreshments	Kim Prakash & Nancy Marden	770.879.0476 770.447.8542
Special Events	Kim Cochran	770.979.8331
Sunshine	Barbara Libby	770.978.2117
Telephone	George Libby	770.978.2117
Tips & Trips Labels	Joan White	770.478.5734
SFMS Rep.	Anita Westlake	404.761.7849

The article submittal due date for the May 2007 newsletter is April 15, 2007.

GENERAL MEETINGS
 General meetings are held on the first Monday of each month. In the event that the first Monday is a holiday and/or the facilities are not available, the meeting will be held on the third Monday of the month. General meetings are currently held at the Chamblee Branch of the DeKalb County Library System. Any deviations from the above schedule will be announced in Tips and Trips.

The Georgia Mineral Society on the Internet:
<http://www.gaminerall.org>
 E-mail Early Notification Program: A field trip and club news update service. To join, members are requested to send in their current e-mail address to:
gms@gaminerall.org

May Show Committee Chairs

Show Chair	Jay Gorday	770.986.0822
Dealer Chair	Martha Brown	770.448.0876
Exhibits	Anita Westlake	404.761.7849
Demonstrations	Anita Westlake	404.761.7849
Hospitality	Nancy Marden	770.447.8542
Treasurer	Dylan Porter	770.998.1018
Advertising	Jay Gorday	770.986.0822
Dealer Dinner	Joan White	770.478.5734
Database	Joan White	770.478.5734
Auction	Kim Cochran	770.979.8331
Set Up/Take Down	Jay Gorday	770.986.0822

March 5, 2007

GMS General Meeting Minutes

The meeting was called to order at 7:34 PM by President Kim Cochran at the Chamblee Library. Approximately 38 people were present, including 3 visitors and 3 new members. Due to technical difficulties, the program portion of the meeting was delayed and the business meeting took place.

COMMITTEE REPORTS

Mary Porter - Secretary – minutes from February meeting available; Sue Gorday motioned to dispense with reading of minutes, seconded by Harry Vas Dias, motion was passed.

Lizabeth McClain – VP Membership – current membership is 580.

Anita Westlake – VP Programs – in April Kim Cochran will speak about gold; May will be the show meeting, plus a talk about the William Holland school and the Wildacres Retreat.

Dylan Porter – Treasurer – not present; no report available.

Julian Gray – Mineral Section – next meeting will be held on March 20th at the Gorday residence; the topic will be isometric minerals. Dinner will be at 6:30, please RSVP.

Martha Brown – Fossil Section – next meeting will be held at Kim Cochran's house on April 18th. The topic will be methods of fossilization; there will be no supper.

Kim Cochran – Gem Section – next meeting will be held at Martha Brown's house on April 26th. Martha will be teaching talc carving; participants need to bring a towel and a knife to carve with.

Joan White – Editor – not present. **Bill Waggener** – Joan apologizes for not having the newsletter completed (thus, her absence); material was not submitted in a timely manner and she had a major computer issue. She will have it finished ASAP now that her computer is up and running. Please have material to her by March 10th.

Bill Waggener – Adopt a Highway – the next collection date is April 7th; this will be the annual egg hunt. There will be a field trip to the Cochran mine after collecting and lunch. Bill provided an overview of the event for the new members present.

Bill Waggener – Education Chair – the GSTA conference was held 2 weekends ago (thanks to Kim Cochran and Mary Porter for helping out) where a pair of mini grant awardees spoke to Bill about the projects they did and are interested in speaking at a GMS meeting about it. The state level Science Olympiad will take place on March 31st at Emory; Anita Westlake is in charge and has acquired volunteers to help out. The elementary Science Olympiad is taking place on the Saturday of the May show in Kennesaw; Lizabeth and Mickey McClain will be assisting Bill. Bill Waggener's photo was published recognizing him as the 2006 Outstanding Earth Science Teacher in Georgia; he has also been asked to help with the framework of the new high school Earth System's course

which will be a required credit for students to graduate.

SPEAKER (7:55)

With technical difficulties worked out, the program portion of the meeting commenced. Anita Westlake introduced Jose Santamaria, Executive Director of the Weinman Museum, as the speaker of the evening. The Weinman will close in mid July this year and will re-open as Tellus Northwest Georgia Science Museum in 2008. Jose gave a Power Point presentation of Tellus showing the various models, and photos of the new facility. He spoke of the different rooms, halls, and galleries the museum will have. Jose also showed photos of the construction progress of the building and the landscaping. In addition to indoor sites, there will also be outdoor learning centers and science trails. Jose stated that classrooms adjacent to the Cartersville Science Center have been acquired to continue educational exhibits and lectures. Anita then presented Jose with a specimen of petrified wood from Arizona in appreciation of his talk.

COMMITTEE REPORTS (Continued – 8:40)

Jay Gorday - May Show – Martha Brown has the dealers in order and all positions are filled; Jay is doing advertising, Kim Cochran is doing the auction and grab bags (stuffing on April 14th, material is needed), Anita Westlake is doing demos and exhibits (sign up sheets being passed around), Joan is doing the dealer dinner (food will be needed), and Nancy Marden is doing hospitality.

George Libby – Field Trips – March 17th, Rome, GA (agates and nodules); March 17th & 18th, Marion, KY is filled and another one is scheduled for May 5th, sign up now. April 21st, Girard, GA (agate); April 28th, Glendon, NC

Julian Gray – Library - accepting book donations; the library is open and available for members to use, let Julian know if you would like to.

Nancy Marden – Refreshments – refreshments provided by Mary Porter.

Barbara Libby –Sunshine Chair – (not present) Maia Santamaria is doing fine after eye surgery. Marcella Wood had 2 heart valves replace two weeks ago, and had a pacemaker put in last week; visit or call her if you can. Dave Babulski will be having hip replacement surgery on April 16th at Gwinnett Medical in Duluth.

OLD BUSINESS

None

NEW BUSINESS

Kim Cochran – has a pamphlet for Ocean View Gem Mining Company if anyone will be rockhounding out west.

DOOR PRIZES (8:53) – Margaret Ronan – Sue Gorday, Mickey McClain, George Libby, Carl Ziglin, and Martha Brown were recognized for providing door prizes; numbers were called.

A motion was made to adjourn meeting at 9:04PM. It was seconded, and unanimously approved.

*Respectfully submitted,
Mary Porter, Secretary*

May Show News

The May Show plans are proceeding well; it's hard to believe that the show is only about 6 weeks away.

Nancy Marden is coordinating the Hospitality Table. She will have a list for volunteers to sign up to work at the Hospitality Table.

Joan White is coordinating the Dealer Diner on Thursday night. She will have a list where you can sign up to bring a vegetable, salad or desert for the Dealer Dinner. The dinner is usually at 6 PM so we would like to have the food as close to 5 PM as possible.

Anita Westlake is coordinating the Exhibits and Demonstration Area this year. If you would like to put in a display case or give your feet a break and share your knowledge with others at the show by giving a demonstration, let Anita know.

Another job that needs to be done is stuffing Grab Bags. I think that I heard that Eva and Jeanette have been busy sewing over 1000 bags and are ready to stuff with rocks, gems, minerals, fossils, and other treasures. The Grab Bag Party will be a Kim's house on April 14th at Noon. WE will eat lunch and then we will start stuffing the goodies into the grab bags. The more hands, the faster things go and the more fun we have.

We also will need some volunteers for Set-up and Takedown. I am coordinating this, so let me know if you can help.

Jay Gorday,
May Show Chair
jgorday@earthlink.net

Education Report

Several GMS members continue to spread their knowledge of the earth sciences. During February Dave Babulski gave a presentation on "Mineral Art from the Microscope" to the Atlanta Microscopical Society. Anita Westlake spoke to Cotton Indian Gem and Mineral Society about 'Minerals in Our Daily Lives'. Julian Gray spoke to the February Winter Gathering of the Southeast Micromounters in Dowling, FL about the Tellus Museum. Kim Cochran spoke to the Western S.C. GMS about "A Brief History of Geology". He also spoke to the Carroll County GMS about "State Gemstones". Additionally, Kim spoke to the Middle Tennessee GMS about "Gold".

Mickey McClain and Roxanne Lopez both can use support in their classrooms. Ask them what would be helpful.

The Holly Camp Earth Science Education Minigrant 2007/2008 applications are available through our website. The applications are for the next school year. Please

encourage all Earth science and elementary teachers that you know to apply for the \$300 Minigrants. Many teachers will now realize what supplies they need and should welcome the money to complete their teaching "bag of tricks."

Please let me know who is sharing their rock and fossil knowledge. Everyone has some unique tidbits that students love to share. It is encouraging to others to see that we are welcomed and well-received by clubs and teachers over the state.

Respectfully submitted,
Bill Waggener,
Education Chair

.....
Membership News

Please join me in welcoming the following new members: Gloria and Steve Adams of Jemison, AL; Ray, Shirley, Sean, and KateLynn Borders and Cody Summerlin and Aimee Hebert of Cedartown, GA; Tim and Bunty Cantwell of Dahlonega, GA; Kerry and Mike Cornwell and Travis and Brittany Krupich of Cartersville, GA; Thomas, Danya, and Diana Davis of Lawndale, NC; Mark Fenoglio of Dacula, GA; John and Deborah Hawkins of Summerville, GA; Preston and Beverly Jarvis of Marietta, GA; Russell and Phyllis Love of Cornelia, GA; Cantey and Ted Smith of Cartersville, GA; and Cindy, Tony, Sophie, and Mack Trentini of Snellville, GA. I hope you will introduce yourself to them when you see them at a meeting or on a field trip. We're glad to have them join us.

I would like to take this time to remind all members to send in an application with each renewal. There is an application conveniently located on the back page of your Tips and Trips each month. This is the easiest way to notify me of any changes or updates of your data. I keep the applications on file so that I may compare them to the prior year's and verify the information. If you do not fill out an application I have to do it myself, and the information may no longer be valid.

Every month I receive lists of members whose information is no good and whose newsletters are being returned to our webmaster and to our newsletter editor. I then have to spend considerable time attempting to track down those members to get corrected information. Please help make the task a little easier for those of us who volunteer for these positions. Thank you very much.

Happy rockhounding!

Lizabeth McClain
Executive VP/Membership



*(all photos courtesy of Dave Babulski)***THE MICROMOUNT CORNER****VESZELYITE**

This month we will continue with an investigation of very rare mineral species. Veszelyite is a very rare copper zinc phosphate. Chemically, vezszelyite is a copper zinc phosphate hydroxide di-hydrate. The chemical formula is: $(\text{Cu,Zn})_3\text{PO}_4(\text{OH})_3 \cdot 2\text{H}_2\text{O}$. The mineral is formed by the action of mineralizing solutions rich with phosphoric acid on primary copper and zinc minerals in the oxidation zone of the mineral deposit.

Veszelyite occurs as blue-green to dark blue prismatic crystals with monoclinic 2/M symmetry that are flattened on {100} and elongated on {001}. In addition to its prismatic crystal form, vezszelyite also occurs in a pseudo-octahedral habit and in granular form. The type locality is the copper and zinc deposits at Moravicza, Romania. The mineral is named for A. Veszelyi (1820-1888), Hungarian mining engineer who discovered the mineral.

Some of the best specimens of vezszelyite came from a single pocket from the Black Pine Mine, Granite County near Phillipsburg, Montana. Crystals up to 0.5 inches in length were reported from this pocket. The mine is since closed and flooded so it is very highly unlikely that any other specimens will be found from this locality. Other vezszelyite localities of note are: The Arakawa Mine, Akita Prefecture, Japan and the La Esperanza Mine, Mayapa, Puebla, Mexico.

From the micromounters perspective vezszelyite is a highly sought after mineral species because of its inherent beauty and extreme rarity. A recent check of mineral micromount dealers showed a few specimens of vezszelyite for sale at prices ranging from five dollars to over forty dollars. A very fine micromount specimen of vezszelyite sold recently on E-Bay for over five hundred dollars! If you are fortunate enough to find a good specimen of vezszelyite at a reasonable price, it would make an outstanding addition to any micromount collection. Shown below are several photomicrographs at a magnification of 25X of vezszelyite from the Black Pine Mine, Flint Creek Valley, John Long Mountains, Philipsburg area, Granite Co., Montana. All the specimens are from the collection of Dr. David Babulski.

IMA Status: Valid Species (Pre-IMA) 1874

Locality: Moravicza (Vasko) in the Banat, Romania. Link to MinDat.org Location Data.

Name Origin: Named for A. Veszelyi (1820-1888), Hungarian mining engineer who discovered the mineral.



Figure – 1



Figure - 2

Found with secondary copper minerals.

This gallery is a suite of vezszelyite specimen. This rare dark blue phosphate was collected from a pocket at the Black Pine Mine in Phillipsburg, Montana. The mine is since closed and flooded, so it is very highly unlikely that any other specimens will be found. This is probably the last of any accumulation of specimens.

[Black Pine Mine, Flint Creek Valley, John Long Mts, Philipsburg area, Granite Co., Montana, USA](#)

Until next time, may all your skies be blue and all your vugs be crystal filled.

Dave Babulski,
Micromount Section Chair

Grab Bags

Thanks to our members, we have over 1,000 bags sewn. In a few days we will fill them. Items have been trickling in to put into the bags. We could still use much more. Please contact me at 770-979-8331 and I will pick them up or bring them to the April meeting.

The party to stuff the grab bags will be at Kim Cochran's on April 14, 2007 at noon. Please RSVP to 770-979-8331. Lunch will be served at noon followed by several trips around the table stuffing the bags. If you have never attended, please consider. We have a lot of fun at this activity.

**Kim Cochran,
Grab Bags**

Junior Section News

**Junior Field Trip
April 15, 2007
Sunday, 11 AM
Franklin, NC
Gem Mining**

Please join us in exploring different mines of the South. In February, we visited the Consolidated Mine in Dahlonega and visited the Gold Museum. The mine had opened a new section up and we were able to see a number of bats hibernating. In April, we will visit one or possible two of the gem mines in Franklin, NC. There are a number to choose from and I have not set up the schedule and cost. If you are interested in joining us, please call me to get the schedule of which mines we will be visiting closer to the Field trip date.

**Roxanne Lopez, Chair
Cell 678-491-0489
Home 770-4360387**



Panning for gold with a tour guide – Alex Lopez And Dontae Russo

Gem Section News

Gem Section Meeting:
Monday, April 30, 2007, 7:30 PM
Kim Cochran's Home
2695 Van Court
Snellville, GA 30078



Last month Martha Brown demonstrated talc carving. We all tried our hand at it. I am not really sure what my turned out to be. I thank her for the demo and hosting the meeting.

This month we will play with the darkfield loupe. Dinner will be served at 6:30 PM (I hope). RSVP—770-979-8331.

**Kim Cochran,
Gem Section Chair**

Mineral Section News

Many thanks to Jay and Sue for hosting the March meeting!! There will be no meeting of the mineral section in April. Details of the next meeting will be announced in upcoming Tips and Trips and on the GMS web page. If you would like to host a meeting at your home or have an idea for a presentation at a future meeting, please contact me!

**Thank you!
Julian C. Gray,
Mineral Section Chair**

Fossil Section News

Fossil Section Meeting
April 18, 2007, 7:30 PM
Kim Cochran's Home
2695 Van Court, Snellville, GA 30278
Phone: 770-979-8331 For directions & RSVP to Kim's home



February's meeting was on Eocene fossils by Gary Leonard. Gary had an interesting program on the Eocene. He has a wonderful collection of fossils organized by location. I now know Eocene means "dawn new". I would like to thank Harry and his wife again for inviting us to his home.

The meeting in April will be on "Methods of Fossilization" by Kim Cochran. As everyone knows Kim has a lot of experience with this subject. Kim will not fix dinner, but he will have many wonderful specimens to look at and study.

Please bring your fossilized specimens also to show and discuss.

**Thank you.
Martha S. Brown,
Fossil Section Chair,
770-448-0876
wlbouva@aol.com**

Sunshine News

Micromount Section News

April 2007 Birthdays

- 4/1 Don Aldridge
- 4/1 Ronald Burke
- 4/1 Michelle McCarty
- 4/1 Kim Woodbury
- 4/4 Bill Mayer
- 4/5 KateLynn Borders
- 4/6 Dorothy Buchanan
- 4/6 Alan Burton
- 4/6 Jim O'Brien
- 4/9 Kathryn Henderson
- 4/10 Evan Giles
- 4/15 Terry Cochran
- 4/15 Drake Doster
- 4/15 Matthew Palomo
- 4/16 Mary Porter
- 4/18 Sarah Bateman
- 4/18 Jim Flora
- 4/21 Jorge Buznego
- 4/22 Mel Grady
- 4/23 Ben Baxter
- 4/23 Kari Salomon
- 4/24 Diana Davis
- 4/24 Walt Morris
- 4/24 Bill Waggener (a multiple of 10)
- 4/25 Peggy Hooper
- 4/26 Carl Pratt
- 4/29 Aimee Lorts
- 4/29 Richard Palmer
- 4/30 Marlene Leitzman
- 4/30 Charles Williams



The Georgia Mineral Society Micromount Section will not be meeting for the next three to four months. Previously announced meetings are canceled for April and possibly June. I will be going in for hip replacement surgery April 16th. There is a possibility of a three month recovery period.

The micromount section and the possibly the Micromount Corner column will be on a short hiatus for April, May and possibly June. I would ask for everyone's thoughts and prayers during this difficult time.

When the meetings resume they will be held at my home at 2677 Colony Circle, Snellville, Georgia 30078. The meetings will be held on the second Saturday of each month alternating with the mineral section. The meetings will run from 10 AM to about 4 PM. A light lunch will be served to all those that attend. Table space will be set-up for microscopes.

The 2007 Micromount Section meeting schedule is as follows: tentatively for June 9, August 11 and October 13.

Dave Babulski,
Micromount Section Chair
 2677 Colony Circle
 Snellville, GA 30078
d.babulski@comcast.net
 678-580-2475

.....
Calling All Cooks

The May show is rapidly approaching. It is definitely time to decide on the dish that you would like to bring to the Dealer's Dinner. I will have sign up sheets at the April meeting. If you do not attend the meeting, please email me to let me know what you plan to bring.

In the past we have been asked for recipes for the delicious dishes we serve at the dealer's dinner. If you will take the time to send in your favorite recipe, I will try to compile a booklet to have available at the May show. Pamela McMurray has volunteered to edit the cookbook.

This is a part of the show that everyone looks forward to. After working long hours on setting up for the show, the dealers and the working GMS members all are very grateful for the dinner provided to them. Your contributions are greatly appreciated.

The only news I have is that George was feeling so well he went on a field trip and you all should be able to read about it in his report, but I had him draw a cartoon of his event and will attach it.

Also I am sorry to say that a member of Cobb has just passed away, Annett McGee. Some of us that belong to both clubs or are members for a long time knew her.

HAPPY BIRTHDAY APRIL BABIES MANY MORE TO COME.

Please send information on news you would like to share with GMS. My email address is angelonsite@bellsouth.net. Thanks. You are all in my prayers, be well and you will hear from me next month.

Everybody have SUNSHINE in your life.

Barbara Libby,
Sunshine Chair

The March Tips and Trips was in error regarding Marcella Wood. She was still in the hospital at that time. (editor)

Joan White,
Dealer Dinner Chair

April 2007

The Georgia Mineral Society

**Like Thomas the Train Said,
“ I think I can, I think I can ”,
A Report on the Hall’s Valley Field Trip.
By George Libby**

It was a cold morning (34 degrees) when I set out for Evans Store to meet Dr. Madden and whatever other rock hounds decided to brave the chill. Perhaps I brought out the sign up sheet a little late and did not get an accurate number of people that showed. I know 30 people signed it but then there were several that signed up singularly and they had 3 or 4 family members with them. Someone told me there were 60 people there. Another told me there were 34 cars there. Certainly 30 people could not have driven 34 cars so my numbers were wrong.

We all owe Dr. Madden a thank you for showing us the way to this site. I spoke to several people there and at the Rome Mineral Show after the trip. Everyone had a great time and even the weather cooperated. The sun warmed things up and I don’t know of anyone that was disappointed.

After the trip I spoke to a couple of rock hounds that had not made the trip. They thought it might be too strenuous and I thought what a shame that someone would just give up on a part of the hobby, collecting rocks to cut into cabs, because of what they perceive might be difficult without ever trying.

I think of my own situation two years ago when I lost all upper body strength and was paralyzed from the waist down. I am still slowly coming back and now here I was, actively participating in a field trip. Of course I have to plan ahead. I put my boots on at our meeting place so I wouldn’t lose time at the site. I was still having people sign up when Dr. Madden was lining up the cars to convoy to the site so I ended up near the back of the pack. At the site, I grabbed my pack and strapped on a hammer and my machete. I was told there were many brambles here. While I laid out my gloves, I forgot them when I picked up my rake and hiking staff. Because of the earlier planning I was somewhere in the middle of the pack when we started off. The actual location was about a mile away but felt more like 5. I just kept plodding away while every one passed me.

It did not bother me that I was the last to arrive at the first site. Actually most of the geodes at this site were weathered and most of the people there were already leaving for a second site. I had just worked myself down a hill through brambles that made a mess of my hands and I felt very comfortable about staying. As a matter of fact, at the end of the day, the nicest piece with some great crystals inside came from this place, but I did grow tired of only coming up with soft centered nodules and I made my way up toward the second site.

On the way I was told there was an old logging trail leading toward it and that was easier for me. I could hear rock hammers hitting solid rocks in the trees and I knew I was

there. I was able to make my way to the digging area and came up with some nodules. I think some people didn’t think I found enough and they handed me extras. Well they will be door prizes. Then most of the people near me decided to go to the blastoid site. They were surprised when I packed up but I felt it would take me longer to get back. They did tell me exactly where the site is but I would leave that for another day. Wayne D. had actually helped me put my loaded pack on my back and handed me my hiking staff and rake (it did double duty as a second staff) as he and the others headed up the hill and I went the long way around.

That mile or so now felt like 10 with the extra weight of the rocks I was hauling but I kept plodding, that is until the tools started to pull my pants down. The only thing I could do was to stop and put my staffs down and set my pants back on my waist which would normally be an easy thing to do but now I had all that extra weight on my back and that did what gravity normally does and I found myself sitting on the ground.

Normally I wouldn’t even think about it but with my legs being what they are I just could not get up. I could take my pack off and then there would be no problem in getting up but since I needed help in getting the pack on my back I had to think about it. I could do what many rock hounds have done and that is to lighten my load and leave my stash on the side of the road. I know what the fables say about being greedy but this stash wasn’t even for me as I considered it door prizes. Also “ I thought I could” bring it home.



There was a 7 or 8 foot pine seedling at the side of the road and I thought I might be able to use it as a ladder. Well I tried to climb up the branches but the weight was just too much and the branches just ripped off. Now my legs were hurting and I had to change my position and just stretch them out for a while. With a break I got my

second wind and used the trunk to help myself up. I still had too much weight and I just bent the trunk over. While hanging off the tree I pushed and pulled the top down and then released pressure while holding on. The tree sprung back the other way and pulled me up. I just picked up my staffs and continued on my way and brought my rocks home.



At first I thought I wouldn’t even mention anything about this, but then I thought it over. If even one rock hound is inspired to try to reach beyond them self and make that next field trip, the story was worth telling. I only hope I can have many more experiences like my Hall’s Valley trip.

Field Trip of the GEORGIA MINERAL SOCIETY

Saturday and Sunday, May 5th & 6th, 2007
Marion, Kentucky
FEE SITE
Reservations Only

WHAT: Fluorite and Fluorescent minerals
WHERE: Mine spoil dumps outside of Marion, Kentucky
 We will meet at the Ben E. Clement Museum, 205 North Walker Street, Marion KY 42064
WHEN: Saturday and Sunday, May 5 & 6, 2007
TIME: Day and night digs.

COLLECTING: Fluorite, smithsonite, sphalerite, cerussite, galena, hemimorphite, hydrozincite, quartz, & pyromorphite. Calcite is by far the most common mineral found, and all other minerals require some digging in the dump to locate.

FEE: The day time digs will cost \$20 and the night time digs will be \$30 (this entitles you to one five gallon bucket of specimens). Admission to the Ben Clement Fluorite Museum is \$ 5.

All reservations for the digs will be handled though the Ben E. Clement Mineral Museum at www.MarionKentucky.us. Or call 270-965-9257, or write Ben E. Clement Mineral Museum, 205 North Walker Street, Marion, Kentucky 42064. Information on campgrounds, lodging, and bed and breakfasts can also be obtained from Clement Mineral Museum.

In order to fill any vacancies in the scheduled digs, after April 1, 2007 these vacancies will be open to any other rock hound who wishes to join the dig. While the primary purpose of this trip is to accommodate GMS members, the secondary purpose is to help the Ben E. Clement Mineral Museum fund its efforts in maintaining a world class fluorite collection and making it available to the public.

WHAT TO BRING: Other than standard collecting equipment, bring plenty of water, snacks, camera, and you will need a portable ultraviolet light. Daytime collectors will need a way to check fluorescence too! Black light boxes or whatever suits you. Night time collectors will need a standard flashlight to travel to and from their cars. Short wave and broad spectrum ultraviolet lights are best. Most collectors will share their lights, but do not count on it, after all someone will need to bring a light. Although, the temperatures have been warm thus far, May can occasionally be quite brisk in the Ohio Valley. So be prepared to dress warmly, multiple layers works best.

MINE HISTORY: There are several mines in the area and we can not be sure of the exact mine we will visit and can not be sure of the minerals we will find. The mines where the dig is to be conducted are located on the Commodore fault system and date back to 1901. Mine shafts on the property have produced fluorite, smithsonite and sphalerite.

Other minerals that have been found in the mine dumps include; cerussite, galena, hemimorphite, hydrozincite, quartz, & pyromorphite.

The Rock Shaft dump comprises most of the material at this mine site. The Rock shaft was completed to the depth of 240 feet. From 1924-25 some 8,000 tons of smithsonite were removed from the Rock Shaft. The Maddox shaft, sunk in 1941-42, was completed to remove approximately 215 tons of "gravel spar" (fluorite). A crosscut was made from the Maddox shaft to the Commodore Fault and, in 1945, a vertical raise was cut up though the Commodore Fault zone. This raise is known as the Yandell shaft. Mud, gouge, calcite, fragments of fluorite veins, sphalerite and galena were noted (R. Trace, 1954). There is an open shaft on the site which is surrounded by barbed wire.

The most common fluorescent mineral is calcite, which glows a soft to bright pearly white. There are other colors other than white, but they are fewer in number. Of particular note are specimens of sandstone which glow a coral pink to a bright red in either short wave or broad spectrum ultraviolet light. There are also specimens which glow various shades of pale yellow and bright blue. Please note that included in the spoil are fragments of mortar and concrete which will also fluoresce. The concrete and mortar was made from rock from the mine.

George Libby
GMS Field Trip Chair
770-978-2117

Onsiteinatlanta@yahoo.com

.....
The Clement Mineral Collection

The collection is composed of thousands of fluorite crystal specimens, ranging in weight from a fraction of an ounce to hundreds of pounds. Each specimen was a rare accidental find from one of the numerous ore bodies that were exploited in the area between 1900 and 1980. Because the veins of fluorite in each mine had their own distinctive character, the 60-year collection can never be duplicated or equaled. The collection is accessible, not just to scientists and collectors, but also to the general public. The museum opened full time on June 01, 1996. John D. Kiefer, Assistant State Geologist with the Kentucky Geological Survey, wrote, "The collection of fluorite specimens assembled by Ben Clement during his long association with the fluorite industry is unique and perhaps the best of its kind in the world. Specimens in the collection illustrate the wide variety of types and colors of fluorite and its many different mineral associations. Properly displayed and enhanced with descriptive diagrams and information, this collection attracts students from all over the United States and around the world." Also preserved with the collection are old photographs, maps, letters, records, mining equipment, and other items of historical and geological significance from Mr. Clement's personal files and his mining operations.

From: <http://www.clementmineralmuseum.com/>

April 2007

The Georgia Mineral Society

**DMC Program of the SFMS Field Trip Committee
An Official Field Trip of The Cotton Indian Gem and
Mineral Society (HOST)
An Official Field Trip of the GEORGIA MINERAL
SOCIETY**

**Saturday April 21, 2007
Girard, Burke County, GA
10:00 AM
"Savannah River Agate"**

WHERE: The River road outside of Girard, GA.

WHEN: Saturday April 21, 2007

TIME: 10:00 AM at the Girard Post Office on Hwy. 23

Children: Children are welcome but need to be supervised as we will be hunting on a dirt road.

Pets: Same as above.

Trip: Beautiful Savannah River Agate has been collected at this location for years. I have been told that there is as much material here today as there ever was.

Collecting: We will be collecting Savannah River Agate, fossils and micro minerals. This material is actually a conglomeration of agate, jasper, chert, and opalite all mixed together to form a layered specimen that will tumble or cab into beautiful display pieces. This rock occurs as black and brown mottled agate and in a large range of pastel colors from greens to yellows to violets. The fossils you may find are from 30-35 million years old Oligocene age deposits. The micro minerals are located in vugs of the agate/chert rock.

Special Conditions: We will be hunting in the roadway and road cuts only. Do Not leave the road cuts. Please stay off of private property.

Bring: You will need to bring a rock hammer and scratching tool to collect the agate. You can dig if you want but make sure you fill in your holes after your finished. If you plan to look for microminerals by busting the larger agate/chert specimens, you will also need some chisels and a sledge. More importantly you NEED eye protection (face shield would be best) and long heavy pants as this agate can act like shrapnel when cracked with a rock hammer or sledge! As always, bring your lunch, plenty of fluids, some bug spray, sun screen, a hat, gloves, sturdy shoes and lots of 5 gal. Buckets (Trust me - you will need them!).

Where to meet: We will meet at the Girard city Post Office on Hwy. 23.

Directions: From I-20 take Hwy. 520 (west of Augusta) south to Hwy. 56 and travel south. Go through McBean (do not take Hwy. 56 Spur). Turn left on Hwy. 23 to Girard and meet at the Post Office at 10 AM.

Drive time: From Atlanta 3 to 3 1/2 hours.

**Contact: Harry Hyaduck 678-464-4462
email, hyaduckh@yahoo.com
Or Kim Cochran 770-979-8331
Need more directions, call Kim Cochran**

"DMC field trips are open to all members of associated clubs of the DMC program of the SFMS Field Trip Committee and to all members of SFMS member clubs who have provided their membership with SFMS liability insurance. Because of insurance requirements, members of the GENERAL PUBLIC are NOT invited on any DMC program field trips!"

DMC Field Trip Policies: (DMC Field Trip Sharing Program of the SFMS Field Trip Committee)

All societies which have agreed to host a field trip and join the DMC Field Trip Sharing Program of the SFMS Field Trip Committee will be called an "associated" club. Only associated clubs will be allowed to publish DMC program field trips as their official monthly field trip. (Benefit of membership!)

Field trips are open to all members of associated clubs of the DMC program of the SFMS Field Trip Committee and to all members of SFMS member clubs who have provided their membership with SFMS liability insurance.

For **insurance purposes**, all associated clubs **must** publish all DMC program field trips as "officially recognized" field trips of their society. It is required that all persons who attend a DMC program field trip be a member, in good standing, of an SFMS club. Since a family membership covers everyone in a family who can attend, your SFMS club will need all family member names on their membership roll.

All sites visited by the DMC field trip sharing program are **not to be revisited** unless they are on public domain property - road cuts, national forests, etc., or on privately owned land with the owner's permission. This is the quickest way to lose access to a host club's field trip location. Therefore, if an associated club or one of its members breaks this crucial DMC field trip policy, their future DMC program field trip information will be **forfeited!**

Please do not visit a site immediately before a DMC program field trip. Also, do not go to a site ahead of the group on the day of the field trip. Meet and convoy with the rest of the group so that everyone will have equal access to the site.

Do not park your vehicle where it is blocking the road, a gate, or another vehicle.

Always fill in all your holes.

Don't litter.

Never disturb buildings or other facilities at a collecting site.

Only take home what you can reasonably use!

PLEASE keep your vehicle locked at all times!

DMC Program / SFMS Field Trip committee's purpose: To collect field trip information from it's member societies; schedule and coordinate field trip dates; disseminate field trip information to all member clubs so that each member society may publish this information as one of their "official" scheduled field trips.

Please reply by e-mail to: dmc@gamineral.org

World Wide Web site for the DMC is:

<http://www.gamineral.org/dmc.htm>

DMC is a program of the Field Trip Committee of the Southeast Federation of Mineralogical Societies, Inc. Copyright © All rights reserved.

"Earth first...we'll collect on the other planets later."

**An Official Field Trip of the
GEORGIA MINERAL SOCIETY**

**Standard Mineral Company
Glendon, North Carolina
Saturday, April 28, 2007**

8:00 AM till Noon

The Georgia Mineral Society has again been invited to participate in one of the best and most interesting field trip opportunities in the Southeast. If you have not collected here in the past, you should not miss an opportunity to go to this quarry for quality specimen/cabinet grade pyrite.

The Glendon pyrophyllite mine is an open pit quarry that has produced many perfect pyrite crystals up to 4 inches on a side and 6 inches long!! Generally, you can find a cube approaching 2 inches or so and a bunch of others in all shapes and sizes up to one inch or more. The pyrite cubes are located loose on the surface or in seams down a foot or less in the bottom of the quarry floor.

If it hasn't rained for some time, the light gray pyrophyllite soil seems to coat everything with a gray goop that makes it difficult to identify the pyrite crystals on the surface. Using a VERY GOOD metal detector makes the hunt almost a "no brainer"! A basic metal detector may offer some help in finding those cubes containing the most iron but just digging anywhere in the quarry floor will probably yield much quicker results. You may also find small greenish blue fluorite crystals in crevices on some of the larger boulders strewn about the middle of the quarry floor.

Collecting: pyrite cubes, pyrite cubes in matrix, green fluorite, and micro-minerals.

DIRECTIONS: Take I-85 North to Charlotte, North Carolina. On I-85 North of Charlotte, either exit the interstate at Lexington on to US 64 and travel through Asheboro to SR 42. Turn right and follow SR 42 past Coleridge and Bennett and SSR 902. Then SR 42 makes a left towards Carbonton and Sanford. Before Carbonton there is a flashing yellow light @ SSR 1006. Turn right onto SSR 1006/ Glendon-Carthage road and go south to the mine which will be on your left. If you spend the night at Sanford you will be traveling West on SR 42 and have to make a left on SSR 1006. Sanford, which is 12 miles to the East of Glendon, is probably the best bet for finding a good motel room and nearby restaurants.

**George Libby
Field Trip Chair**

Onsiteatlanta@yahoo.com

678-910-7476 cell

"Say It Ain't So Moh!"

Now the Moh's scale, as we have come to know it, is currently in the midst of undergoing some dramatic changes as secretly revealed by an insider source recently. Legal briefs have been filed in the 11th Circuit Court in Eclectic, Alabama as of February 29th, 2007.

The Moh's Scale was initially created to separate and identify differing groups of stone with each group number sharing a very important factor—hardness from the lowest denominator being a soft stone (such as talc) one, to the opposite end of the spectrum with a rating of ten to distinguish the diamond's high-end rating.

In 1922, Friedrich Leroy Moh, a German mineralogist devised a crude but practical method of comparing hardness or scratch resistance of minerals. It has become universally known as Moh's scale or Mohs scale as the grammatically challenged would call it. Throughout his lapidary life he longed for a set of standards by which the hardness of all stones could be reasonably classified on a scale of one through ten. Mohs, born in Gernrode, Germany, studied chemistry, mathematics and physics at the University of Halle and also studied at the Mining Academy in Freiberg, Saxony. After assuming the position of a foreman at a mine in 1901, Mohs moved in 1902 to Alabaster Alabama, where he was employed in trying to identify the minerals in a private collection of a banker.

His mother, Sophronia Betsy Moh was originally married to a hard working "carnie" that bit the heads off chickens while working as a carnival geek for P.T. Barnum. To say she was the matriarch of a totally dysfunctional extended family is an understatement of major proportions. Money they made; common sense they did not. Sophronia (Mrs. Moh) had an eccentric third cousin, twice removed, by her former father-in-law's aunt who by chance, had inherited several million dollars from her great grandfather. Turns out, this cousin was named Larry. Larry, who was a loafer; preferred not to waste his valuable time working for a living. Throughout his life he had piddled away the days helping Leroy establish criteria for Leroy's to-become famous hardness scale.

Not long after Leroy's eventual death due to an overdose of milk duds, Larry decided he wanted a piece of the action with regard to royalties earned through the implementation of the Moh's scale. Larry wanted to be remembered and wanted his share of the monies that have accumulated over the years.

Now as if this wasn't embarrassing enough, consider the following. Mrs. Sophronia Moh's maiden name was Kurliie. Upon her son's early and unexpected passing, she too decided she was due some of the financial rewards due her son as a result of his life's work on the scale of hardness, with which all we rockhounds are now familiar.

(continued, page 14)

Graves Mountain "Rock Swap and Dig"

Graves Mountain code of conduct!

- 8 am to 6 pm, Friday, April 27, 2007
- 8 am to 6 pm, Saturday, April 28, 2007
- 8 am to 6 pm, Sunday, April 29, 2007
- 8 am to 6 pm, Friday, October 5, 2007
- 8 am to 6 pm, Saturday, October 6, 2007
- 8 am to 6 pm, Sunday, October 7, 2007

"Your society is invited to field collect minerals at Georgia's premiere mineral location!"

The SFMS Field Trip Committee has been in contact with the caretaker in charge of Graves Mountain, Clarence Norman Jr., in regard to his plans to hold two separate three day digs and rock swaps on the Mountain during April 27, 28, & 29, 2007 and during October 5, 6, & 7, 2007. He will have the mountain open for collecting from 8 am to 6 pm each day. All participants must stop at the welcome table in the Hospitality tent to sign a liability release and make a small contribution to defray the cost of opening the mountain and providing port-o-lets. There will be several golf cart type, four wheeled vehicles available to transport those participants who have trouble walking long distances. The dig will cease and everyone is expected to be off the mountain by around 6 pm each day. Participants will be allowed to park in a designated area on the mountain.

Rock Swap and Hot Food/Drinks: Junior will set aside an area in the upper parking lot for tables to be setup for daily rock swaps. Anyone who would like to setup a table(s), please contact Junior at the phone numbers listed below. Hot food cooked on the grill, cold drinks and chips will be available for purchase on the mountain during all three days of these events. Don't forget to bring some extra money to buy the special "Graves Mountain Rock Swap and Dig" T-shirt!

THESE DIGS ARE OPEN TO ALL SFMS CLUBS and the GENERAL PUBLIC! Mark your calendar and tell all your members about these two great events!

Contact Information: Clarence Norman Jr. - 706.359.3862 (his business) or 706.359.2381 (his home)

DIRECTIONS: From Atlanta's I-285, take I-20 east to the exit for Washington, GA SR 78 (SR 10, SR 17) and turn left. Travel north to Washington, turn right onto SR 378 and drive 11 miles to the Graves Mountain area. The entrance to Graves Mountain is on your right about 8/10 mile past the Lincoln county line sign. The entrance is a paved road that goes through a gate and up a hill. Please park along the access road and then proceed to the "Welcome Tent" at the end of the pavement to obtain a liability release form and to make a donation for the portable bathrooms, etc.

**SFMS Field Trip Committee:
Please reply by e-mail to: dmc@gamineral.org
Jim Flora - SFMS Field Trip Committee Chair**

**Park your vehicle in the designated area(s) only.
CHILDREN WILL BE ALLOWED DURING THE "Rock Swap and Dig" IF EACH CHILD IS UNDER ADULT SUPERVISION!**

**ALL pets must be kept under control and on a leash.
The Graves Mountain caretaker, Clarence Norman Jr., has final and absolute say as to where you may safely work.**

**Ladders or power tools of any kind will not be allowed. (HAND TOOLS ONLY!)
STAY AWAY FROM ALL HIGH WALLS!!
NO REPELLING OFF OF ANYTHING!
NO ONE IS ALLOWED TO DRIVE THEIR VEHICLE ON ANY PART OF GRAVES MOUNTAIN BEYOND THE PARKING AREA! (The caretaker must accompany anyone driving beyond the parking area!)**

EVERYONE NEEDS TO BE OFF THE MOUNTAIN BY DUSK. (Absolutely no one is allowed on Graves Mountain after dark.)

Please protect our ability to field collect at Graves Mountain! Report Violations to: Clarence Norman Jr. 706.359.3862 (his business) or 706.359.2381 (his home) All reported violations will be held in strict confidence.



HELP CELEBRATE!

This year marks the 60th Anniversary of the American Federation and the Convention in Roswell will give us a chance to celebrate. We hope that you will join us! Our BIG celebration will occur on Thursday, June 7th beginning at 7:00 P.M. at the host motel. We'll hear a few words about "the aliens" of Roswell...did they see flying saucers overhead or was it some other anomaly? In addition, several of the AFMS past presidents plan on being in attendance and will share with us some of their recollections of their year as president. And that's just for starters.

The 60th Anniversary Committee also plans to have _____ and _____. Sorry, we can't fill in the blanks for you - you'll have to attend to find out all about our special plans and commemorative gifts. Today...call the motel and make your room reservation (Best Western Sally Port Inn, 1.505.622.6430. \$78.30 per night includes taxes and breakfast). Tomorrow...send in your registration form for advanced tickets, the Awards Banquet and the Editor's Breakfast. (See www.amfed.org/show2007.htm to download forms and further information.) Plan your competitive or noncompetitive exhibit and send in your application. Some club cases are available on a first come basis. Registration deadline is May 1st.

(from A.F.M.S. Newsletter, March 2007)

FERNBANK MUSEUM OF NATURAL HISTORY

767 Clifton Rd, NE
Atlanta, GA
404.929.6300

For details on these exhibits, films, and events, please visit our website at

www.fernbank.edu/museum

or sign up for our broadcast email at

http://www.fernbank.edu/museum/e_news.html.

On Exhibit:

- *Reflections of Culture* (new permanent exhibit)
- *Lizards and Snakes: Alive!*
- *Still Small Voices*

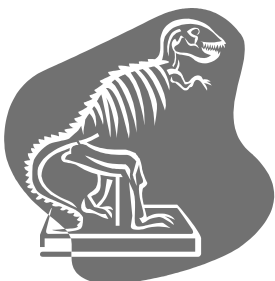
Upcoming Public Programs:

- *Special Film Screening and Discussion, A Portrait of Alzheimer's Disease.* Tuesday, April 3, 7 PM—10 PM. Free. Reservations required.
- *Southeastern Snakes Lecture and Book Signing.* Tuesday, April 17, 7 PM. Free. Reservations required.
- *Fernbank Forest Family Walk.* Saturday, April 14, 10 AM. \$7 for members, \$12 for nonmembers. Reservations required.
- *Girl Scout Day.* Saturday, April 15, 10 AM—5 PM. Discount for Girl Scouts in uniform and special activities.

Now Showing in IMAX: (Check our website for special screenings)

- *Deep Sea* (closes April 13)
- *Wired to Win* (opens April 14)
- *Hurricane on the Bayou*

Martinis and IMAX: Friday evenings, 5:30 PM – 10 PM



**Christine Bean,
GMS Member and
Geologist at
Fernbank Natural History
Museum**

Weinman Mineral Museum

Calendar of Events

SPECIAL EVENTS

RockFest!

NEW DATE - Saturday, May 5, 2007

Free Admission

It is never too early to start planning for the Weinman's famous RockFest! Join us for a fun family day as we explore the museum grounds for rare and beautiful treasures. Activities on this day include visiting with over 40 vendors, free panning for gemstones, a sale in the gift shop, demonstrations, and free mineral and fossil ID.

COOKIES and COKE LEARNING SERIES

Free Admission

RECEPTION AT 6:30 PM

LECTURE AT 7:00 PM

Thursday, April 5, 2007

Julian Gray

***The Mineralogy and Geology
of Graves Mountain, Georgia***

Graves Mountain has been one of the world's mineral treasures since its discovery in the 1850's. It remains Georgia's most famous collecting location. Rutile and lazulite from Graves Mountain are well-known by mineral collectors everywhere and can be found in the world's best museums. As a mine, kyanite for the ceramics industry was mined here from the 1960's through early 1980's, in the process exposing even more exquisite rutile crystals. The site is open to collectors and still produces world-class rutile as well as rare secondary phosphate minerals.

TEMPORARY EXHIBIT

Conglomerate

February 5 - May 19, 2007

The unique art of Cyndi Gusler will be exhibited in the Weinman Mineral Museum's next temporary exhibit, *Conglomerate*. From a distance each piece of art in the exhibit appears to be a natural mineral formation. When viewed more closely, however, it becomes obvious that each is a conglomerate of colorful everyday objects that have been recycled and reassembled in some very interesting ways.

I-75 Exit 293 at Hwy 411, (770) 386-0576

www.weinmanmuseum.org

**Weinman Mineral Museum
PO Box 3663,
Cartersville, Georgia 30120
Ph: 770.386.0576 x401**

Upcoming Federation Meetings

California Federation
Lancaster, California
June 15—17, 2007

Eastern Federation
Newark, New Jersey
October 6-7, 2007

Jackson, MS
February 23 - 24, 2008

Midwest Federation
Hosts: Midwest Mineralogical and Lapidary Society
Houghton, Michigan
August 11- 12, 2007

Northwest Federation
Butte, MT
August 3 - 5, 2007

Ontario, OR
June 20 - 26, 2008

Rocky Mountain Federation and AFMS Convention
Hosts: Chaparral Rockhounds
Roswell, NM
June 5 - 10, 2007

Tulsa, OK
October 31 - November 2, 2008

South Central Federation
Arlington, Texas
September 1-2, 2007

Southeast Federation
Location to be Announced: Gulf Coast of Mississippi
November 9-11, 2007

.....
Upcoming Shows and Events

April 28, 2007, Panama City, FL – Panama City Gem & Mineral Society. Jo Moody Harris Park Clubhouse. Hours: 10:00 A.M. – 2:00 P.M. Fort Walton, FL and Dothan, AL clubs invited to participate. Contact: Curtis Bane @ 850.763.3356 or curtisbane@aol.com.

April 27-29, 2007, Charlotte, NC - Charlotte Gem & Mineral Club. Charlotte Merchandise Mart, 800 Briar Creek Road. Hours: 27th & 28th, 10:00 A.M.—7:00 P.M. and 29th, 10:00 A.M. - 4:00 P.M.

April 28-29, 2007, Memphis, TN - Memphis Archaeological and Geological Society. 28th Annual Mid-America Mineral, Fossil, and Jewelry Show. Pipkin Building Midsouth Fairgrounds (corner of East Parkway and Central Avenue). Hours: 28th, 9:00 A.M. - 6:00 P.M.; 29th, 10:00 A.M. - 5:00 P.M. Contact: James Butcko at 901.743.0058 or rockclub@earthlink.net.

May 11-13, 2007, Marietta, GA - Georgia Mineral Society. 39th Annual Mother’s Day Weekend Gem and Mineral Show. Cobb County Civic Center, 548 Marietta Parkway (corner of North Marietta Parkway and Fairgrounds Road). Hours: 11th & 12th, 10:00 A.M. - 6:00 P.M.; 13th, 12:00 Noon - 5:00 P.M. Wwww.gamineral.org.

June 2-3, 2007, Birmingham, AL - Alabama Mineral & Lapidary Society. 34th Annual Tannehill Gem, Mineral, Fossil and Jewelry Show. Tannehill Historical State Park. Hours: 9:00 A.M.- 5:00 P.M. Contact: Rick Kittinger at rick.kittinger@bellsouth.com or James Carr (publicity) at james@lapidaryclub.com. Check out the website as well at www.lapidaryclub.com.

.....
(continued from page 11) **“Say It Ain’t So Moh!”**

Thereon, legal battles of unprecedented enormity have begun in the courts at Eclectic, AL. The chief justices have heard arguments from both sides. No decision could be made at the 11th Circuit Court hearings. So on March 17th, the chief justices moved the hearings to Washington D. C., to be heard by the Federal Courts. Their decision would be final.

This story does have an end, which we are now approaching. In addition to financial rewards being sought by Mrs. Moh as well as the cousin, both are demanding their names be included in the hardness scale formerly known as the Moh’s scale. The sad news, on April 1st, we must report that a liberal judge in Washington, D.C. has agreed to change the name of our beloved scale to include the names of the two claimants seeking notoriety and presumably a name for themselves in the history books.

Therefore, with much trepidation, we deliver the unsettling news to you that as of January 1, 2008 at 12:01 a.m., the Moh’s scale shall no longer be known by its name we had so fondly recognized it by. In the future, mention of the rockhound’s reference to scale of hardness shall be known as the Kurlie, Moh and Larry scale.

Please remember in the future to address this scale accordingly. April Fool’s

**Co-authors Herb Whittington -- (334) 793-6811
Frank Foster -- GaRockhound@aol.com
Editors of the Rockhounds Flimflam Journal**

(submitted via email)

Editor's News

Thanks to everyone who submitted their articles on time for this edition of the Tips and Trips. Everyone loves to read the original articles published for our club. We have many new members in our club that are very interested in learning more about our hobby or about favorite collecting sites. Please take some time and share your experiences with your fellow club members by writing an article for publication. Possibly some of our more creative members will write some poetry to express their appreciation of the hobby.

If a Junior resides in your household, encourage him or her to contribute to the newsletter also. It makes the newsletter much more readable for our members that are no longer able to collect or attend meetings.

To provide a timely newsletter, it is necessary for all submissions to be received in time for publication.

Thank you for all your help and cooperation.

*Joan White,
Editor*

Important Web Sites

Georgia Mineral Society

www.gamineral.org

AFMS and SFMS Websites

The SFMS Newsletter, the Lodestar, and AFMS Newsletter are now available for all members to read on line at:

<http://www.amfed.org/sfms> and

www.amfed.org

Friends of Mineralogy

<http://www.friendsofmineralogy.org>

.....
 Questions, comments, suggestions or contributions of articles can be made to Joan White, 9146 Sunset Drive, Jonesboro, Georgia, 30238-4520 or jowhite@bellsouth.net or editor@gamineral.org. Your suggestions are appreciated and solicited.

April 2007

Sun Mon Tue Wed Thu Fri Sat

1	2 General Meeting	3	4	5	6	7 Adopt-A-Highway
8	9	10	11	12	13	14 Grab Bag Party
15 Junior Field Trip	16	17	18 Fossil Section Meeting	19	20	21 Girard Field Trip
22	23	24	25	26	27 Graves Mtn.	28 Graves Mtn. & Glendon, NC
29 Graves Mtn.	30 Gem Section					

THE GEORGIA MINERAL SOCIETY, INC.
P.O. Box 15011
Atlanta, Georgia 30333-5011
www.gamineral.org
MEMBERSHIP APPLICATION

Name: _____ Birthday: month/day _____

Email: _____

Spouse: _____ Birthday: month/day _____

Spouse's email: _____

Children's Names & Birthdays: mo/day/yr (residing at home): _____

Address: _____

City: _____ State: _____ Zip+4: _____

Home Phone(s): _____ Cell Phone(s): _____ Office Phone(s): _____

Occupations: _____

Hobbies, Interests: _____

SPECIAL INTEREST GROUPS AT GMS: (Check all that apply)

Mineral Section

Micromount Section

Fossil Section

Junior Section

Gem Section

Electronic Newsletter

Dues for New Members (Single, Couple, Family) are \$25.00 per Society year. (\$20.00 + \$5.00 Initial Processing Fee)
Renewal Dues are \$20.00 per Society year. (due 12 months from the date of joining and every 12 months thereafter)
Reinstatement Dues (For Expired Membership) are \$25.00 (\$20.00 + \$5.00 Reinstatement Fee).

FAMILY MEMBERSHIPS ARE FOR THE IMMEDIATE FAMILY INCLUDING CHILDREN RESIDING WITH PARENTS.
CHILDREN UNDER 18 YEARS OF AGE ARE CONSIDERED JUNIOR MEMBERS.

PLEASE MAKE CHECKS PAYABLE TO THE GEORGIA MINERAL SOCIETY, INC.

THE GEORGIA MINERAL SOCIETY, INC.
P.O. BOX 15011
ATLANTA, GEORGIA 30333 - 5011

ADDRESS CORRECTION REQUESTED
PLEASE FORWARD

FIRST CLASS

