

Tips *and* Trips



The Georgia Mineral Society

Atlanta, Georgia

Volume XXXV/Six

June 2006

PRESIDENT'S MESSAGE

At the suggestion of the Treasurer, the Council recommended on August 9th the creation of a permanent fund to be laid aside for the purpose of acquiring a building as a meeting place for the Society and as a museum where a collection of the Society might be adequately housed. The Council recommended that \$100.00 be removed from the General Fund for this purpose. This recommendation was approved by the members at Stone Mountain on the evening of September 6th. It is hoped that the fund will be increased from time to time, and although it is small, I am confident that if we continue to work toward this end and have sufficient faith, many of us will live to see our hopes fulfilled.

This was not August 9th, 2005, but August 9th, 1947. It has been the dream ever since to have our own home. The members in 1947 did not live to see their dream fulfilled. Let us pray that the GMS members in 2006 will see a permanent home.

Kim Cochran, GMS President

ANNUAL PICNIC AND AUCTION

Greetings to all:

The annual June Picnic and Elections will be held on Saturday, June 24th this year. Jones Bridge Park will host our picnic and auction from 11:00 until we have gathered all the auction specimens that we can handle (or afford!). We will begin eating at 11:30 followed by a short business meeting and the annual elections. The auction should begin around 1:00. Please bring a covered dish of your favorite picnic food, enough for you, your family, plus one additional family of four. GMS will provide drinks, ice, cups, plates, and plastic ware.



Jones Bridge Park is located north of I-285 on the Chattahoochee River. Take I-285 east or west to Exit 31. Take GA. 141 (Peachtree Industrial Blvd) North from I-285. Follow GA. 141 north for approximately 6.7 miles to Jones Bridge Road and turn left at the traffic light. Go to the end of the road and you will enter Jones Bridge Park. The first picnic shelter on your right is where we will hold the picnic, elections and auction. Come join us for fellowship and glorious new specimens for your collection.

Bill Waggener, GMS Special Events Chair

NOMINATIONS COMMITTEE REPORT PROPOSED 2006-2007 SLATE OF OFFICERS

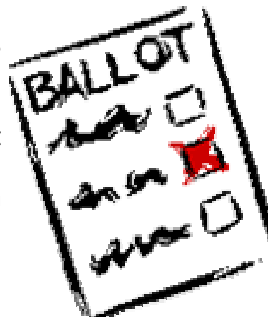
On behalf of the 2006 Nominations Committee, composed of Anita Westlake, John Trimble, Lizabeth McClain, Mickey McClain, and myself, I am pleased to announce a

..... slate of officers for the 2006-2007 GMS year:

President: Kim Cochran
Executive Vice President/Membership: Lizabeth McClain
Vice President/Programs: Anita Westlake
Treasurer: Dylan Porter
Secretary: Mary Porter
Trustee: Eva Ostrofsky

Elections will be held at the annual picnic on June 24th. At that time, nominations from the floor will also be welcome. Please attend and exercise your right to vote for your GMS officers.

Hope to see you there!
Mary Porter,
Nominations Committee Chair





The Georgia Mineral Society, Inc.
 A Non-Profit Educational Organization
 Seventy Years of Tradition



Objective and Purpose: "To Educate the Youth of the State and the Members of this Society In the Field of Earth Science"

AFMS Education - All American Club 2003
Bulletin Contests: 2003: First Place Small Bulletin AFMS, Third Place Small Bulletin SFMS; 2004: First Place Large Bulletin AFMS & SFMS

Executive Board

President

Kim Cochran
 2695 Van Court
 Snellville, GA 30078
 770.979.8331

Treasurer

Teresa Curl
 889 Veeler Road
 LaFayette, GA 30728-6615
 706.764.2291

treasurer@gamineral.org

Junior Section Chair

George Prince
 2434 Caladium Drive
 Atlanta, GA 30345
 770.414.5533

juniors@gamineral.org

Trustee to 2007

Bill Waggener
 9146 Sunset Drive
 Jonesboro, GA 30238
 770.478.5734
wgaggenerii@bellsouth.net

May Show Chair

Jay Gorday
 1690 Granger Court
 Chamblee, GA 30341
 770.986.0822
mayshow@gamineral.org

Executive VP/Membership

Lizabeth McClain
 378 5th Street, Apt. 3
 Atlanta, GA 30308
 404.872.6310

membership@gamineral.org

Gem Section Chair

Kim Cochran
 2695 Van Court
 Snellville, GA 30078
 770.979.8331

Micromount Section Chair

Dave Babulski
 2677 Colony Circle
 Snellville, GA 30078
 678.580.2475

micromount@gamineral.org

Trustee to 2008

Patricia Joan White
 9146 Sunset Drive
 Jonesboro, GA 30238-4520
 770.478.5734
jowhite@bellsouth.net

December Show Chair

Kim Cochran
 2695 Van Court
 Snellville, GA 30078
 770.979.8331

Vice President/Programs

Dylan Porter
 196 High Creek Drive
 Roswell, GA
 770.998.1018

programs@gamineral.org

Mineral Section Chair

Julian C. Gray
 524 Robin Lane
 Marietta, GA 30067
 770.973.3632

minerals@gamineral.org

Immediate Past President

Douglas P. Daniels
 3660 Prince Way
 Tucker, GA 30084-8317
 770.723.1359

president@gamineral.org

Tips & Trips Editor

Carolyn L. Daniels
 3660 Prince Way
 Tucker, GA 30084-8317
 770.723.1359
newsletter@gamineral.org

Webmaster

Jim Flora
 P.O. Box 605
 Hiawassee, GA 30546
 706.896.8040
webmaster@gamineral.org

Secretary

Mary Porter
 196 High Creek Drive
 Roswell, GA
 770.998.1018

secretary@gamineral.org

Fossil Section Chair

Martha Brown
 4837 Greenway Road
 Norcross, GA 30071
 770.448.0876

fossils@gamineral.org

Trustee to 2006

Frank Decaminada
 795 Nile Drive
 Alpharetta, GA 30022
 770.992.8309

trustee2006@gamineral.org

Field Trip Co-Chairs

George Libby 1730 Rhet Butler Dr. Lilburn, GA 30047
 Greg Grieves 1760 Northside Dr., Apt 119 Atlanta, GA 30318
 404.314.8143

fieldtrips@gamineral.org

Education Chair

Bill Waggener
 9146 Sunset Drive
 Jonesboro, GA 30238
 770.478.5734

education@gamineral.org

Committee Chairs

Adopt-A-Highway	Bill Waggener	770.478.5734
Assets/Equipment	Open to Volunteers	
Awards	Patricia Joan White	770.478.5734
Curator/Gem Box	Kim Cochran	770.979.8331
Building	John Trimble	828.264.4811
Historian	Roxanne Lopez	770.436.0387
Facilities	Jay Gorday	770.986.0822
Hospitality	Margaret Ronan	404.636.0720
Librarian	Julian C. Gray	770.888.9331
Parliamentarian	Patricia Joan White	770.478.5734
Refreshments	Kim Prakash & Nancy Marden	770.879.0476 770.447.8542
Special Events	Bill Waggener	770.478.5734
Sunshine	Barbara Libby	770.978.2117
Tips & Trips Labels	Patricia Joan White	770.478.5734
Telephone	George Libby	770.978.2117
SFMS Rep.	Frank Decaminada	770.992.8309

The article submittal due date for the July 2006 newsletter is June 10, 2006.

GENERAL MEETINGS

General meetings are held on the first Monday of each month. In the event that the first Monday is a holiday and/or the facilities are not available, the meeting will be held on the third Monday of the month. General meetings are currently held at the Chamblee Branch of the DeKalb County Library System. Any deviations from the above schedule will be announced in *Tips and Trips*.

The Georgia Mineral Society on the Internet:
<http://www.gamineral.org>

E-mail Early Notification Program: A field trip and club news update service. To join, members are requested to send in their current e-mail address to: gms@gamineral.org.

Chat Group: Sign on at http://groups.yahoo.com/group/gms_discussions/. To subscribe, send an email to gms_discussions-subscribe@yahoogroups.com.

May Show Committee Chairs

Show Chair	Jay Gorday	770.986.0822
Dealer Chair	Martha Brown	770.448.0876
Exhibits	John Trimble	828.264.4811
Demonstrations	John Trimble	770.425.5075
Hospitality	Anita Westlake	
Treasurer	Teresa Curl	706.764.2291
Advertising	Perry & Teresa Curl	706.764.2291
Dealer Dinner	Patricia Joan White	770.478.5743
Database	Patricia Joan White	770.478.5743
Grab Bags	Kim Cochran	770.979.8331
Auction	Kim Cochran	770.979.8331
Set Up/Take Down	Open to Volunteers	

Announcements for educational publications, continuing education classes, and shows or exhibits are provided in *Tips and Trips* as a service to GMS members. Appearance of the above in *Tips and Trips* does not constitute an endorsement by GMS.

**DMC PROGRAM OF THE SFMS FIELD TRIP COMMITTEE
AN OFFICIAL FIELD TRIP OF FORSYTH COUNTY GEM & MINERAL CLUB (HOST) AND
AN OFFICIAL FIELD TRIP OF THE GEORGIA MINERAL SOCIETY**

8:00 A.M. -12:00 Noon, Saturday, June 10, 2006
Vulcan Materials Company's Morganton Quarry
Morganton, Burke County, NC

CHILDREN AND PETS: Over 12 years old can attend if supervised closely by parent or guardian. Must wear appropriate safety gear. No Pets allowed.

CONTACT NUMBERS: Contact Jim Stroud, if you have any questions concerning the fieldtrip.

Telephone: 336.744.2940
E-mail address: stroudj@vmcmail.com
Mailing Address: P.O. Box 4239, Winston-Salem, NC 27115

COLLECTING: This quarry has several rock types, which include augen gneiss, chlorite biotite gneiss, amphibolite, and pegmatite. The following collectable minerals have been found at this location: garnet, golden beryl, black tourmaline, apatite, sphene, feldspar, biotite and muscovite books, and siderite. The majority of these minerals are found in the pegmatite zones. Garnets are almandine variety and have been found up to silver dollar size. However, the majority of them are 1/8" to 1/4" in diameter imbedded in the pegmatite.

SPECIAL CONDITIONS: This is an operating mine. All persons attending the fieldtrip will be required to sign a hold harmless agreement, take 15 minute hazardous training, and wear the required safety gear at all times. This includes a hard hat, safety glasses, and steel-toed boots. We will meet at the quarry office at 8 a.m., sign releases, receive instructions on boundaries and safety, and be lead into the collecting area. We must leave the quarry by 12 noon! In addition, all persons are asked to stay away from the quarry walls. There is plenty of material loose on the quarry floor. **VEHICLES WILL BE PERMITTED INSIDE THE QUARRY ON THIS TRIP** and parked until leaving.

BRING: Hard hat, safety glasses, rock hammer, and something to carry and wrap samples.

DIRECTIONS AND WHERE TO MEET:

Where we will meet: We will meet at the quarry at 8:00 A.M. and be allowed to collect until 12:00 noon. The Quarry's phone number is 828.437.2616.

Directions to our meeting place: From Interstate 40, take Highway 18 North at exit 105. At the fourth traffic light, turn right on Fleming Drive. Continue to end of road at Route

64/70 (dead end at Bi-Lo Food Store). Turn left on Route 64/70, travel under the railroad bridge. Immediately after crossing under bridge, at the Viscotec plant, turn right on Kirksey Drive. Make another right on Quarry Road. Quarry entrance is 1/4 mile off Quarry Road.

Vulcan Materials Company
Causby Quarry Road
Morganton, NC 28655
828.437.2616

DRIVE TIME: This is approximately a 1-1/2 hour drive from Winston-Salem, NC.

"Field trips are open to all members of associated clubs of the DMC program of the SFMS Field Trip Committee and to all members of SFMS member clubs who have provided their membership with SFMS liability insurance. Because of insurance requirements, members of the GENERAL PUBLIC are NOT invited on this or any DMC program field trips!"

DMC Program / SFMS Field Trip committee's purpose: To collect field trip information from it's member societies; schedule and coordinate field trip dates; disseminate field trip information to all member clubs so that each member society may publish this information as one of their "official" scheduled field trips.

GEM SECTION

Monday, June 26, 2006, 7:30 P.M.
Kim Cochran's Home
2695 Van Court
Snellville, Georgia 30078



In April we played with the Chelsea Filter at Gracia Evin's house. I thank Gracia for providing her home and preparing a fantastic meal.

This month we will discuss gemstones of Europe.

Supper will be served at 6:30 P.M. If you don't RSVP before the day of the meeting, you will not eat! RSVP 770.979.8331.

*Kim Cochran
GMS Gem Section Chair*

MICROMOUNT SECTION



There will be no meeting for the Micromount Section this month. The next meeting of the Micromount Section will be announced in a future issue of *Tips and Trips*.

Carolyn L. Daniels, Editor



MINERAL SECTION NEWS

Many thanks to Jay and Sue for hosting the May meeting. The next meeting will be in July, but there will be no mineral section meeting in June. Please watch *Tips and Trips* and the web page for details of the next mineral section meeting.

If you are willing to host a meeting or have a topic you would like to suggest, please contact me.

*Julian C. Gray,
GMS Mineral Section Chair*

- 6/7 Raymond Herbert
- 6/11 Lee Rogers
- 6/15 John Ehrenhard
- 6/17 Bob Richardson and Heather Smith
- 6/18 Amber Daniels and Patricia Vas Dias
- 6/21 Samantha Parks
- 6/22 Charlie Seabolt
- 6/26 James Ballard
- 6/28 Rita Kempf
- 6/29 Kelsey Hooper and Patrick Woulfe
- 6/30 Elizabeth Prince

*Barbara Libby
GMS Sunshine Chair*

FOSSIL SECTION MEETING

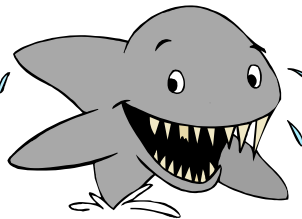
DATE: June 14, 2006
TIME: 7:30P.M.

LOCATION: Martha & LeRoy Brown
4837 Greenway Rd., Norcross, GA 30071
PHONE: 770.448.0876 for RSVP and DIRECTIONS

We had another great meeting. Thank you to Kim Cochran. His program was really interesting and we had a great discussion. Thank you to all the members that attended. Members brought specimens of amber to look at and discuss.

June's meeting will be on teeth. We will see if we can get into the meat of the subject. This program will discuss the different types. If you have a fossil please bring it to show us.

*Martha Brown, GMS Fossil
Section Chair*



JUNIOR SECTION

There will be no Junior Section meeting this month. The next meeting date and time will be published in a future issue of *Tips and Trips*.

Carolyn L. Daniels, Editor

SUNSHINE REPORT



Here is some additional Sunshine for you:

Mickey McClain has a new teaching job; he'll be teaching earth science at Yeager Middle School in Douglas County beginning this summer.

JUNE 2006 BIRTHDAYS

- 6/4 Martin Tesler
- 6/4 Joan White
- 6/5 Katie Gulley

MEMBERSHIP

Information regarding new and renewed members for the month of May was unavailable at the time of publication of this issue of *Tips and Trips*.

Carolyn L. Daniels, Editor

Education Report, June 2006

Jay Gorday spoke to a group at a public library.

Mickey McClain, Liz McClain and Bill Waggener presented the Elementary Science Olympiad, Rockhound event for 58 elementary school students on Saturday, 14 May at 9:30 A.M. The students represented 28 schools from around Georgia as part of their Science Olympiad teams. GMS is pleased to have presented this service for 4 of the last 5 years. GMS also hosted the State High School Science Olympiad Rocks and Minerals Event in April. We look forward to supporting the Georgia Science Olympiad program for High Schools and Elementary Schools in the years to come.

Carolyn and Doug Daniels also assisted the Rocks and Minerals team members of the Booth Middle School (Peachtree City) Science Olympiad Team in preparing for the National Middle School Science Olympiad Competition.

The Holly Camp Memorial Earth Science Education Minigrant Program for 2006-2007 is accepting applications until 30 June 2006. Minigrants will be awarded on 31 July 2006 in time for the coming school year.

Respectfully submitted,



**LIBRARY NEWS:
GMS Library Open for Business!**

The Georgia Mineral Society Library is in its new home and is open for business. Many thanks to Jay Gorday who helped to purchase a few new bookshelves. Jay also helped to unpack, sort, and place books. As a preview of our holdings, there are nearly four hundred titles in the library, not including sixty or so books donated last year by Anita Westlake. These include excellent references on fossil, lapidary, mineral localities, mineral collecting, and general geology. There are even a few children's books. What will be useful to lots of GMS members is the huge and nearly complete set of *Lapidary Journals*. Only a few issues in the 1980s and 1990s are missing. I'll post a list of needs shortly. We also have a lot of *Rocks and Gems* and *Rocks and Minerals* magazines, as well as a few of the *Mineralogical Record* and *Mineral News*. The late GMS member Charlie Hall also donated many videos of presentations he heard at symposia he attended.

This is a great resource and you should avail yourself of this great research material. Anyone wanting to use the library please contact me and set up a time to come by. I will post rules and a catalog shortly. Also, anyone who may have GMS Library materials, please get them back to me soon so I can perform an accurate inventory!

*Julian C. Gray
GMS Librarian*

prizes are \$50 for 1st place, \$25 for 2nd place, and a \$20 junior prize.

Anita Westlake – Hospitality - has times open for every day; especially needs Friday morning. She gave a summary of responsibilities.

Teresa Curl – Treasurer - was not present. Jay Gorday reported that the Civic Center as been paid.

Joan White - Dealer Dinner - has her kitchen crew assembled, but needs more food donations; she has a list of needed items. Jay Gorday explained that the dinner is also for those who help set up. Try to have food there by 5:30; we eat at 6:00.

Joan White – Database - comprised of door prize entries; she adds to and updates after the shows. A fresh database was started 5 years ago and is presently up to 6500 names. Members who receive a hard copy of *Tips & Trips* are also mailed a post card. An email has not been sent out yet.

Kim Cochran - Grab Bags - extended thanks to all for making/stuffing bags; there were over 1000 sewn, and 1000 stuffed. They ran out of material to fill the bags. Remember grab bag donations when collecting. Eva Ostrofsky and Jeannette Banks sewed bags.

Kim Cochran – Auction - has 70 items for Saturday at 2:00. He will ask dealers for donations to have 100 lots.

Jay Gorday - Set Up/Take Down - volunteers are needed for set up (9:00 A.M. Thursday), take down (6:00 P.M. Sunday), to load the trailer at Kim Cochran's house on Wednesday afternoon, and unload Monday morning.

Kim Cochran - December Show Chair – this will be the last December show; the Executive Board has voted to discontinue it. Richard Hightower will be handling advertisement; most other chairpersons are the same. Richard wants to take over the show next year and asked if we would run it, to which Kim said no. We will be welcome to set up display cases. Richard told Kim that anyone willing to help with his show would be compensated.

COMMITTEE REPORTS (8:06)

Dylan Porter – VP Programs – the next meeting is July 17th; Julian Gray will be speaking on Graves Mountain.

Mary Porter - Secretary – minutes from April meeting available, a motion was made to dispense with reading of minutes. The motion was seconded; the motion was passed with 5 opposed.

Teresa Curl – Treasurer – not present; provided Kim Cochran with an ending balance of \$23,527.55.

(Continued Next Page)

MAY 1, 2006

**GMS GENERAL MEETING
MINUTES**

The meeting was called to order at 7:34 P.M. by President Kim Cochran at the Chamblee Library. Approximately 27 people were present, including 1 visitor.



SPEAKER

In lieu of a speaker, the annual show meeting was held.

Jay Gorday - May Show Chair - began by stating that all is in place; the fire marshal has accepted the floor plan.

Martha Brown - Dealer Chair - replaced 2 dealers who had to back out.

John Trimble – Demonstrations - has plenty of times open; he is hoping for a lapidary volunteer.

John Trimble – Exhibits - has one case open up front, and more on the floor. Jay is having a contest again; the

June 2006

The Georgia Mineral Society

MAY 1, 2006
GMS GENERAL MEETING MINUTES

(Continued)

Lizabeth McClain – VP Membership – has a current list for members to review for contact corrections and renewal dates.

Julian Gray – Mineral Section – next meeting is May 16th at the Gorday residence; the topic will be fluorite. Announced a talk at the Weinman on Australian opals this Thursday, and an Astronomy Club event this Saturday.

Martha Brown – Fossil Section – the next meeting is June 14th at Martha's; she is not cooking. The topic will be fossilized teeth. Joan White asked when meetings will be held, stating that the GMS tri-fold lists Thursday meetings. Martha replied that there is no set night; Joan will change the tri-fold to read that the dates selected by participants.

Kim Cochran – Gem Section – last month was on the Chelsea filter; Lizabeth McClain brought some gems to look at. The next will be in June on gemstones of Europe at Kim's house; RSVP to eat.

George Libby – Field Trips – May 20th – Norwood, NC at the Bowers farm for limonite.

Bill Waggener – Education Chair – the deadline for mini grant applications has been extended until the end of June. Julian Gray spoke in April to the Rome club about Graves Mountain. Bill was invited to host the Elementary Science Olympiad on May 13th; Mickey and Lizabeth volunteered to help.

Bill Waggener – Adopt a Highway – the event was delayed due to storms; 3 people besides him showed up; 43 bags of trash were collected. He will plan another pick up for October.

Bill Waggener – Special Events - June 24th is the annual picnic. We will eat at 11:00, and then have elections and the auction.

Carolyn Daniels – Tips & Trips – the deadline for articles is the 10th. She expressed the need of timeliness due to her workload. Announced that she will not continue next year as editor.

Julian Gray – Library - thanks to Jay for his help; shelves are repaired/replaced, and books are shelved. Julian will be planning an open house event in the future.

Kim Prakash/Nancy Marden – Refreshments – provided by Mickey and Lizabeth McClain. Volunteers are needed from August thru the year. Donations are accepted for plates, drinks, etc.

Barbara Libby –Sunshine Chair – (not present) Kim Cochran announced that Louis Eldridge has not been getting therapy he needs from the state and is home, but has no car to get around.

Dave Babulski – Micromount Section – not present; no report available.

Frank Decaminada – SFMS – the next meeting is in August, held in Nashville.

NEW BUSINESS

Kim Cochran announced that a board meeting was held on April 23rd; the minutes were read and approved.

Mary Porter – nominating committee has met and agreed on the following nominations for June elections: President – Kim Cochran, EVP Membership – Lizabeth McClain, VP Programs – Anita Westlake, Treasurer – Dylan Porter, Secretary – Mary Porter, Trustee thru 2009 – Eva Ostrofsky. Any nominations from the floor will be accepted and eligible for election at the picnic.

DOOR PRIZES (8:33) – **Margaret Ronan** – Mickey McClain and Carl Ziglin were recognized for donations. Door prize numbers were called.

A motion was made to adjourn meeting at 8:40 P.M. It was seconded, and unanimously approved.

*Respectfully submitted,
Mary Porter, Secretary*

AFMS and SFMS WEBSITES

Check out the SFMS (Southeast Federation of Mineralogical Societies) and AFMS (American Federation of Mineralogical Societies) websites:



<http://www.amfed.org/sfms> and www.amfed.org

via Lodestar (SFMS newsletter; 5-6/06)

MAY SHOW REPORT

WOW! What a Show! Our May Show is now over and packed back into the shed and I am in the recovery mode. We had great attendance, the best that I can remember! Set-up and take down went fast and smoothly. We had a great auction! Kim, Teresa and helpers raised \$969 that will go toward our building fund. We sold out of grab bags (1000 of them). GMS bags and hats along with the granite paperweights were also available at the Hospitality table. The only problem that we had was due to our decision to move the show next year. Our dealers gave us plenty of feedback on this decision and you can read about this in my other article this month.

I would like to give a big Thank You to all who helped to make this show a success! Unfortunately, I do not have room to list everyone. GMS and I do appreciate all the hard work you all did for the show. Your efforts are what made this show a success!!

I do need to recognize our Committee Chairs and their helpers for the hard work they did:

- Thanks go to everyone who helped with the Set Up and Take Down. By the time I get all my stuff packed up, all our helpers had all the GMS stuff torn down, packed up and the trailer about loaded.
- Thanks go Joan White Waggenner and her helpers for the Dealer Dinner. The food was wonderful as always and we had plenty left over to munch on all show. Thanks also to all whom brought dishes for the dinner.
- Thanks go to John Trimble for coordinating our Display Cases. We had 14 displays (if I counted right) and they all looked great! It was great seeing all the displays. Thanks to all the exhibitors who put in a display. I would also like to thank the Weinman Mineral Museum for bringing their case with new acquisitions; they looked great (I can't wait to see them on display at the museum!).
- Thanks go to Kim Cochran and all his staffers for making the grab bags to sell. A special thanks also goes to our bag makers. The cloth bags sell much better than paper bags. We need to start collecting material for next year's grab bags.
- Thanks go to Kim Cochran, Teresa Curl and their helpers for the successful auction. We

collected almost \$1000 for our building fund!

- Thanks go to John Trimble for arranging the demonstrations. Thanks to John, Anita and Jay for giving demonstrations.
- Thanks go to Anita Westlake and all her helpers who worked at the Hospitality Table, sold grab bags and GMS shopping bags and answered questions.
- Thanks go to Teresa and Perry Curl, for our publicity and advertising. The ads looked great. The crowds we had are directly related to our publicity and ads. I do not think that we did anything different this year but their effort really paid off this year.
- I want to say a big THANKS to Martha Brown for all her hard work as Dealer Chair. I think that we had a fine mix of Dealers, and other members and Dealers said the same

It will not be long until it is time to turn our attention to our Holiday Show, Kim is already busy getting the show all lined up. Please support Kim and the December show committees. Say YES!!, when asked to help. Better than that, find the spot that you want and VOLUNTEER!! We need and can all ways use new and more helpers, after all this is YOUR show. Contact Kim to volunteer to help.

Jay Gorday
GMS May Show Chair



Large rutile crystal found during the Graves Mountain Rock Swap and Dig on Saturday, April 29, 2006. The next Rock Swap and Dig will be held October 6-8, 2006. (Photograph by Jim Flora.)

SFMS 2006 Wildacres Workshop at Little Switzerland, NC

2006 Workshop Dates

April.....Thursday, April 13 to Thursday, April 20, 2006

August.....Monday, August 21 to Sunday, August 27, 2006

September.....Monday, Sept. 18 to Sunday, Sept. 24, 2006

Wildacres Retreat is a conference center dedicated in 1946 by I.D. Blumenthal and Madolyn Blumenthal of Charlotte, NC, to the improvement of human relations.

It is situated on 1400 acres at an elevation of 3,300 feet atop a mountain called Pompey's Knob. It is in Little Switzerland, approximately half way between Asheville and Blowing Rock, NC just off the Blue Ridge Parkway.

There are two lodges, a dining hall, where meals are served family style, a library/auditorium building, mineral and lapidary shops plus a pottery studio.

Fees

Lodge accommodations: \$310 per person (double occupancy), including meals. A limited number of single rooms are available at \$470 per person. There are no facilities for camping or recreational vehicles.

Day Students: \$140 per person, no meals are included. (Individual meals may be purchased directly from the Wildacres Retreat.)

Registration Procedures

Applications from members of SFMS clubs will be accepted first; however, members of other AFMS clubs may apply and will be scheduled following SFMS applicants.

Applications will be accepted beginning on January 17, 2006 for all sessions. At that time a \$50 administrative fee should be submitted. The postmark date on or after this date determines the order of acceptance. **First-time attendees at SFMS Workshops have an extra priority.**

Students under age 18 are welcome, but they must be accompanied by a responsible adult and must be approved by the workshop director and instructor.

Reservation Deposit

A deposit of \$50 per person must accompany all applications. The full amount may be remitted with the application if the applicant wishes. (It is easier for the Registrar.) The balance is due 4 weeks before the workshop begins. **No reminders will be sent.**

Cancellation Policy

There is a \$50 nonrefundable charge to cover administrative costs. An additional \$50 charge will be assessed for cancellations made less than 4 weeks before a session begins. No refund will be returned for cancellations by the student within 7 days of the start of a session. There will be no fee adjustment for late arrival or early departure.

Workshop Directors

David and Barbara Tuttle
85504 Blackmon Road, Yulee, FL 32097
Phone: 904-225-0689 Email: dt@net-magic.net

Workshop Registrars

"Red" and Flora Lee Walker
164 Sexton Loop, Oakdale, TN 37829-2323
Phone: 423-369-3077 Email: waregistrar@gmail.com

Session 1: April 13-20, 2006

Chainmaking	Dee/Bill Conybear
Fused Glass	Jo Harrison
Jewelry and Closeup Photography	Ken Kipnis
Precious Metal Clay	Ken/Mary Ann Devos
Silversmithing, beginning	Don/Ann Monroe

Session 2: August 21-27, 2006

Cabochons	Alan Jewell
Faceting, Advanced	David Lonser
Gem Appreciation	Ben Smith
*Metalsmithing, Advanced	Jeff Sheer
Precious Metal Clay 1	Ken/Mary Ann Devos
Raku Pottery	Cindy McDowell
Seed Beading	Vivian Heath
Silversmithing, Beginning	Dan Haga
Space and Local Geology	Mike Reynolds
Stained Glass, Beginning	Julia Larson
Wirecraft, Beginning	Kathy Morris

Session 3: September 18-24, 2006

Gem Appreciation	Ben Smith
Glass Bead Masking	Marilyn Jobe
Intarsia	Tom Wilke
Mineral Identification	Betty James
Opal Cutting	Sara Lee Boyce
*Precious Metal Clay 2	Ken/Mary Ann Devos
Scrimshaw	Bill Wetzel
Southwest Silversmithing	Dan Haga
*Stained Glass 2, (Slabs)	Julia Larson
Wirecraft, Beginning	Carol Penry

*Note: Advanced courses with prerequisites are designated with an asterisk .

SFMS 2006 William Holland Workshop at Young Harris, Georgia

2006 Workshop Dates

June.....Sunday, June 11 to Saturday, June 17, 2006

October..Sunday, October 8 to Saturday, October 14, 2006

Check in is on Sunday after 3 p.m. and departure is Saturday morning after breakfast.

The William Holland School of Lapidary Arts is situated on a mountain in north Georgia near the North Carolina border. The facility includes a two-story main building known as the Sparks Lodge with 29 air-conditioned bedrooms on the upper floor. A second lodge is located nearby with 22 additional air-conditioned bedrooms. All bedrooms are motel-like with private baths and two beds. Two rooms are equipped for the handicapped.

The lower, ground level of the Sparks Lodge houses 13 classrooms, the kitchen, and dining room. This floor is completely air-conditioned, and a new elevator permits easy access to both floors.

There are two other buildings that make up the retreat complex: the Seabolt Building, which houses the George Kasper Memorial Library as well as showers and restroom facilities for the campground, and Mary Lou's Cottage, to house the instructional staff. The campground has 10 full hook-up spaces for RV's up to 40 feet in length.

Fees

Lodge accommodations: \$310 per person double occupancy, including meals. **Single room:** \$470.

Day Students: \$140 per person, no meals are included.

Campground Students: \$120 hookup (including 2 persons; \$25 per additional person), \$140 per person for classes. No meals are included but are available directly from the retreat.

Meals: Breakfast \$5, lunch \$6, dinner \$7.

Registration Procedures

Applications from members of SFMS clubs will be accepted first; however, members of other AFMS clubs may apply and will be scheduled following SFMS applicants.

Applications will be accepted beginning on January 17, 2006 for both sessions. The postmark date on or after this date determines the order of acceptance. **First-time attendees have an extra priority.**

Students under age 18 are welcome, but they must be accompanied by a responsible adult and must be approved by the workshop director and instructor.

Reservation Deposit

A non-refundable administrative fee of \$50 per person must accompany all applications. The full amount may be remitted with the application if the applicant wishes. (It is easier for the Registrar.) The balance is due 4 weeks before the workshop begins. **No reminders will be sent.**

Cancellation Policy

There is a \$50 nonrefundable charge to cover administrative costs. An additional \$50 charge will be assessed for cancellations made less than 4 weeks before a session begins. No refund will be returned for cancellations within 7 days of the start of a session. A minimum of three students must be enrolled in a particular class to support the cost of the class. No fee will be charged if a class is canceled. No adjustment will be made for late arrival or early departure.

Workshop Directors

Dana and Ray Gonzalez
6226 Seaton Drive, Columbus, GA 31909
Phone: 706-327-4474 Email: drg@mchsi.com

Workshop Registrars

Sonia Arnold and Charlotte Caughman
P.O. Box 268, Brevard, NC 28712
Phone: 828-883-2029 or 864-473-0317
Email: whregistrars@gmail.com

Session 1: June 11-17, 2006

Chainmaking, Beginning	Dee/Bill Conybear
Faceting, Beginning	David Corn
Fused Glass	Addy DePietro
Lost Wax Casting	Fred Sias
Opal Cutting	Joe DePietro
Origami	Hideko Pezant
Polymer Clay	Marilyn Jobe
Seed Beading	Kathy Morris
*Silversmithing, Advanced	Dan Haga
Silversmithing, Beginning	Allen Jewell
Stained Glass 1	Julia Larson
Wirecraft, Beginning	Lisa Roberts
*Wirecraft, Advanced	Linda Chandler

Session 2: October 8-14, 2006

*Glass Bead Making, Intermediate	Marilyn Jobe
Cabochons	Anita Westlake
Chain Making	John Runkle
Fused Glass	Addy DePietro
Lost-wax Casting	John Iacullo
Opal Cutting	Joe DePietro
Seed Beads	Jo Harrison
*Silversmithing, Advanced	Dan Haga
Silversmithing, Beginning	Bill Cady
*Wire Weaving	Linda Chandler
*Wirecraft Sculpture	Evelyn Gantnier

***Note: Advanced courses with prerequisites are designated with an asterisk .**

2006 Wildacres Workshop Registration Form

Session: April August September **Accommodations:** Lodge Day Student

(A) Mr SFMS Club _____
 Name Mrs
 Ms _____
PLEASE PRINT NAME(S) AS YOU WANT IT TO APPEAR ON YOUR NAME TAG SPELL OUT CLUB NAME INITIALS NOT ACCEPTED

(B) Mr Phone _____
 Name Mrs
 Ma _____ Email _____

Address: _____
Street City State Zip

Is this the first time you will attend Wildacres? (A) Yes No (B) Yes No
 Have you attended any other SFMS Workshop? (A) Yes No (B) Yes No
 Do you wish to be placed on Stand-by if there are no vacancies when your application arrives? Yes No

Class Choices

First Choice	*	Second Choice	*	Third Choice	*
A					
B					

(*) Check box if you have previously taken this course at an SFMS Workshop

Room Assignment for Single Applicants only:

- 1) Do you have a friend with whom you wish to room?

- 2) Do you smoke? _____ Do you wish to room with a non-smoking person? _____ yes _____ no preference.
- 3) Are you an early riser _____ or a Night Owl _____

4) Room Request for Physical/Medical Reasons:

Please do not ask for a specific lodge or room unless you have a physical or medical reason for doing so. _____
 5) **Special Dietary needs:** Diabetic _____ Other _____

NOTE: SMOKING IS NOT ALLOWED IN ANY WILDACRES BUILDING

INSTRUCTIONS

- 1) Applications will be accepted beginning on January 17, 2006 for all sessions. The postmark date on or after this determines the order of acceptance. First-time attendees have an extra priority.
 - 2) Your Club Membership Dues must be current and your club's dues to the Federation must also be paid before you will be accepted.
 - 3) Cost per person for this session is \$310, double occupancy with private bath. (A limited number of single rooms are available for \$470 per person.) \$140 per person for day students. (Meals are not included for day students but may be purchased from the retreat.)
- A reservation deposit of \$50 per person must accompany this form. You may, and are encouraged to, pay the full amount with this application. If the full amount is not paid with this application, the balance will be due four weeks prior to the workshop.
- 4) **Cancellation Policy:** There is a \$50 nonrefundable charge to cover administrative costs and an additional \$50 charge for canceling less than 4 weeks before the session begins. No refund will be given for cancellations received less than 7 days before the session. **There are No adjustments for late arrivals or early departures.**

Amount submitted with application: \$ _____

Make Check Payable to:

SFMS Wildacres Workshop

Mail check and this form to:

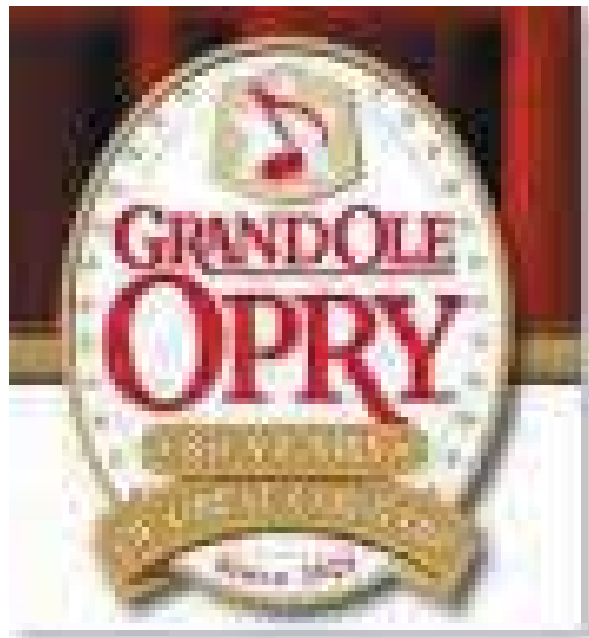
Wildacres Registrars

164 Sexton Loop, Oakdale, TN 37829-2323

Phone: 423-369-3077 Email: waregistrar@gmail.com

FOR REGISTRAR'S USE ONLY

Postmark Date:	Check #:
Deposit #:	Amt. Paid: \$
Accept. Mailed:	Balance due: \$
Standby Mailed:	Bal. Check #:
Deposit #:	Bal. Amt. Pd: \$
Cancel Date:	Total Paid: \$
- Cancel. Fee: \$	Refund: \$
Refund Chk #:	Refund Mailed:



ROCKIN' IN NASHVILLE

The SFMS/AFMS 2006 Convention is scheduled to be held in Nashville, TN in mid-August. The Hotel Preston is the host hotel and we're all encouraged to make reservations with them as early as possible. August is prime vacation time and Nashville is a major tourist stop. A block of rooms is being held for us, but rooms are going quickly and once they are gone, others in the hotel may not be available. Be sure to call the hotel directly and tell them that you are with the AFMS Convention to receive the group rate for the rooms.

As of publication date (early March), we've not received further information about registration or other activities. We suggest checking on the AFMS website and following the links to the show (www.amfed.org) to find the latest. We're hoping to have full information for the May issue.

In the meantime...plan on coming to Nashville in August. Besides getting to meet with AFMS'ers from all over the U.S., you'll get a chance to visit a wonderful show hosted by the Middle Tennessee Gem & Mineral Society and be able to take advantage of all the "touristy" things that Nashville has to offer.

Make those reservations at the Hotel Preston, get your exhibit case together, and join the fun as we go "Rockin' in Nashville" this August.

from the *A.F.M.S. Newsletter* (4/06)

**WEINMAN MINERAL MUSEUM
CARTERSVILLE, GEORGIA
CALENDAR OF SPECIAL EVENTS**

SPECIAL EVENT

Saturday, June 10, 2006
10:00 A.M. - 5:00 P.M.

18th Annual Rockfest!

Free Admission

Mineral, gem, and fossil dealers showcase their wares on the grounds of the museum. Door prizes, mineral identification, a sale in the gift shop, food, and family fun!

*Jose Santamaria, Executive Director
Weinman Mineral Museum (and GMS Member)*

.....
FERNBANK MUSEUM OF NATURAL HISTORY

767 Clifton Rd, NE, Atlanta, GA
404.929.6300

Special Exhibits Now on Display:

Chocolate: The Exhibition

Day of the Dead

In the IMAX® Theatre:

Wild Safari: A South African Adventure and *Amazon* -
Closing June 2.

Dolphins - Opening June 3.

Amazon

Martinis and IMAX: Friday evenings, 5:30 P.M. - 10 P.M.

Upcoming Public Programs:

Regions of Georgia: Brasstown Bald, Saturday, June 3, 10 A.M. - 3 P.M. (Extra fee, call to register at 404.929.6307).

Chocolate, Saturday, June 4, 12 Noon - 3 P.M. Special activities and performances, including free chocolate product samples (Free with admission, while supplies last).

Fernbank Forest Family Walk, June 17, 10 A.M. - Noon (extra fee call 404.929.6307 to register).

For details on exhibits, films, and events, please visit our website at www.fernbank.edu/museum or sign up for our broadcast email at:

http://www.fernbank.edu/museum/e_news.html

*Christine Bean
Fernbank Geologist and GMS Member*

UPDATE ON THE GEORGIA MINERAL SOCIETY'S SHOWS

In last month's bulletin, Kim talked about the plans to move the May show to the North Atlanta Trade Center and discontinue the December Show.

I wrote up a letter to our dealers telling them our decisions and reasons and handed them out at the show this past weekend. I also asked for comments, suggestions and feedback. It turns out that we got plenty of feedback and most of our dealers were not in favor of the move.

We also heard from the Civic Center and several dealers that a promoter was interested in the Mother's Day date if we made the move to Norcross. If this happened, they would be in direct competition with our show.

With all this new information, our President, Kim Cochran, called a special executive board meeting to discuss this situation. In the board meeting, we listed all the pro's and con's of moving the show to Norcross and keeping the show in Marietta. After toughly discussing the matter, a motion was made to keep the show in Marietta. The executive board then voted to keep the Mother's Day May show at the Cobb County Civic Center.

I talked with the Cobb County Civic Center, and have reserved our spot for Mother's Day Weekend 2007

*Jay Gorday
May Show Chair*

.....
**THE MICROMOUNT CORNER
MAKING 3D PHOTOMICROGRAPHS**

I have been interested in 3D imaging for quite a long time and recently have begun experimenting with 3D imaging through the microscope. A growing area of experimentation on the part of 3D imaging hobbyists is creating 3D images from the microscope. There is abundant information about 3D imaging and 3D photography on the internet. I would suggest that you look at some of these interesting web sites before experimenting on your own. (A number of these web sites are listed at the end of this special report.)

A stereo microscope yields two images separated by the distance between our two eyes. Through the stereo microscope each eye sees a slightly different view of the specimen. When these two slightly shifted images are combined in the brain the sensation of a 3D image is created. The goal of 3D photomicrographs is to create the illusion of a 3D image without using the stereo microscope. After much experimentation, I have found a relatively easy way to create 3D photomicrographs of mineral micromounts. The technique I use employs the Babulski

gimbal mechanical stage with the microscope used to take the photomicrographs. The gimbal stage makes the task of positioning the specimen for 3D imaging very easy. The idea behind 3D imaging is to create two images shifted in position, as each of our two eyes would see them through the stereomicroscope. To see the 3D effect, these two photographic images are placed next to each other and held at reading distance (About arms length). Looking at the junction between the two images you cross your eyes and then let your eyes relax (This takes a little practice so be patient). You will see a third image appear between the two photographs, this third image will appear in 3D!

To create a 3D photomicrograph using the Babulski gimbal stage, you first center the specimen and note the position of the inner gimbal ring. Then you rotate the inner gimbal ring 2.5 degrees to the right and make a photographic exposure. Note that this is the "Right Side" image. Then rotate the inner gimbal ring 5 degrees to the left and make another photographic exposure. Note that is is the "Left Side" image. Using the gimbal stage makes the process very easy.

A number of major factors must be kept in mind when creating 3D photomicrographs. These major factors are:

1. The linear alignment of the two images is critical. Care must be taken to move the stage or the microscope in linear X or Y directions to keep the specimen in the correct orientation between the two photographic exposures.
2. Lighting between the two exposures must be as close to the same as possible. This can be a bit tricky particularly if the specimen position was moved both in the linear and gimbal rotation directions.
3. Focus must also be the same between the two exposures. I have found that selecting several key areas of the specimen as focus markers helps maintain overall image focus between the two exposures.
4. It is critical to note which exposure is image "right" which is image "left". When viewing the two images to create the 3D effect, the left image must be on the left and the right on the right side. If the images are reversed, the 3D effect will not appear.

Figure 1 shown below is a stereo pair taken through the microscope with the Babulski gimbal stage technique. The images are four second exposures on Kodak ASA 400 color print film at a magnification of 25X.

(Continued Next Page)

**THE MICROMOUNT CORNER
MAKING 3D PHOTOMICROGRAPHS**
(Continued from Previous Page)



Figure 1: Stereo Image pair of Mixite with Malachite and Azurite from the Carisso Mine, Tintic District, Utah.

Figure 2 shown below is a stereo pair of Vanadinite taken through the microscope with the Babulski gimbal stage technique. The images are four second exposures on Kodak ASA 400 color print film at a magnification of 25X.

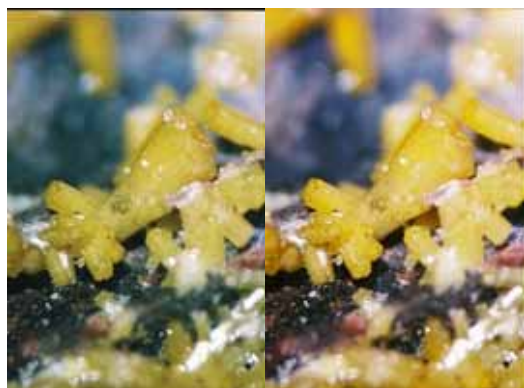


Figure 2: Stereo Image pair of Vanadinite from the Ford Mine, Tucson Wash, Pinal County, Arizona.

Having the ability to view 3D images of some favorite mineral micromounts without the stereo microscope offers another way to enjoy mineral micromounting.

Internet References:

www.mineralarts.com/stereo/micro.html

www.ray3d.com

www.3d-web.com

www.3d2di4.com

For more information on the Babulski Gimbal Mechanical Microscope Stage, see *Rocks and Minerals* magazine (73:06), Nov./Dec., 1998

*Until next time, may all your skies be blue
and all your vugs be crystal filled,
David Babulski, GMS Micromount Section Chair*

SFMS CLUB & SOCIETY SHOWS/SWAPS

(check with show contact for admission charges, if any)

June 3-4, 2006, Birmingham, AL - Alabama Mineral and Lapidary Society. 33rd Annual Tannehill Gem and Mineral Show. From Birmingham: Take I-20/59S. To Exit 100. From I-450: Take Exit 1 and follow the signs. Hours: Both days, 9:00 A.M. - 5:00 P.M. Contact: Rick Kittinger at rick.kittinger@bellsouth.com.

June 9-11, 2006, Charlotte, NC - Charlotte Gem and Mineral Club. 39th Annual Gem, Jewelry, Mineral Show and Sale. 2500 E. Independence Boulevard. Hours: 9th, 10:00 A.M. - 6:00 P.M.; 10th, 10:00 A.M. - 7:00 P.M.; 11th, 10:00 A.M. - 5:00 P.M. Contacts: Jolene Falcon (Show Chair), 704.855.9815, gemitrips@ctc.net and Becky Strickland (Dealer Chair), 704.537.6010, jsrskat@msn.com. Website: www.CharlotteGem.com.

September 8-10, 2006, Winston-Salem, NC - Forsyth Gem and Mineral Club. 35th Annual Gem, Mineral, Jewelry Show and Sale. Educational Building, Dixie Classic Fairgrounds. Hours: 8th and 9th, 10:00 A.M. - 7:00 P.M.; 10th, 12 Noon - 6:00 P.M. Website: www.forsythgemclub.com.

September 23-24, 2006, Hiddenite, NC - Western Piedmont Mineral & Gem Society. 18th Annual Hiddenite Gem & Mineral Show. Hiddenite Educational Complex, Sulpher Springs Road. Hours: 23rd, 9:00 A.M. - 6:00 P.M.; 24th, 12 Noon - 6:00 P.M. Contact: Patty Arnold at 828.465.2769.

September 30-October 1, 2006, Lexington, KY - Rockhounds of Central Kentucky. 16th Annual Show. National Guard Armory, Airport Road. Hours: September 30th, 10:00 A.M. - 6:00 P.M.; October 1st: 12:00 Noon - 5:00 P.M. Contact : Bekki Miracle, 502.868.0258.

from the *Lodestar*, SFMS Newsletter (5-6/06)

2004/2005 REGIONAL FEDERATION SHOWS & CONVENTIONS

California Federation

Hosts: Calaveras Gem and Mineral Society
Angels Camp, California
June 9-11, 2006

Eastern Federation

Hosts: Gem and Mineral Society of Palm Beaches, Inc.
West Palm Beach, Florida
November 17-19, 2006

Northwest Federation

Hosts: Southern Washington Mineralogical Society
and Mt. Hood Rock Club
Kelso, Washington
July 14-16, 2006

Rocky Mountain Federation

Hosts: Stillwater Mineral and Gem Society
Stillwater, Oklahoma
June 9-11, 2006

South Central Federation

Hosts: Ark-La-Tex Gem and Mineral Society
Bossier City, Louisiana
August 18-20, 2006

Southeast Federation (Phase 1)/AFMS Convention

Hosts: Middle Tennessee Gem Society
Nashville, Tennessee
Show: August 18-20, 2006
Convention: August 16-20, 2006

Southeast Federation (Phase 2)

Hosts: Montgomery Gem and Mineral Society
Montgomery, Alabama
December 1-3, 2006

per information in *A.F.M.S. Newsletter* (4/06)

June 2006

Sun	Mon	Tue	Wed	Thu	Fri	Sat
				1	2	3
4	5	6	7	8	9	10
11	12	13	14	15	16	17
18	19	20	21	22	23	24
25	26	27	28	29	30	

Trips and
Trips Deadline &
DMC Field Trip

SFMS William

Holland
Workshops

Fossil Section
Meeting

GMS Picnic/
Auction/
Elections

Gem Section
Meeting

THE GEORGIA MINERAL SOCIETY, INC.
P.O. Box 15011 Atlanta, Georgia 30333-5011
www.gamineral.org
MEMBERSHIP APPLICATION

Name: _____ Birthday: month/day _____

Email: _____

Spouse: _____ Birthday: month/day _____

Spouse's email: _____

Children's Names & Birthdays: mo/day/yr (residing at home): _____

Address: _____

City: _____ State: _____ Zip + 4 _____

Home Phone(s): _____ Office Phone(s): _____

Occupations: _____

Hobbies, Interests: _____

SPECIAL INTEREST GROUPS AT GMS: (Check all that apply)

Mineral Section

Micromount Section

Fossil Section

Junior Section

Gem Section

Electronic Newsletter

Dues for New Members (Single, Couple, Family) are \$25.00 per Society year. (\$20.00 + \$5.00 Initial Processing Fee)
Renewal Dues are \$20.00 per Society year. (due 12 months from the date of joining and every 12 months thereafter)
Reinstatement Dues (For Expired Membership) are \$25.00 (\$20.00 + \$5.00 Reinstatement Fee).

FAMILY MEMBERSHIPS ARE FOR THE IMMEDIATE FAMILY INCLUDING CHILDREN RESIDING WITH PARENTS.
CHILDREN UNDER 18 YEARS OF AGE ARE CONSIDERED JUNIOR MEMBERS.

PLEASE MAKE CHECKS PAYABLE TO THE GEORGIA MINERAL SOCIETY, INC.

THE GEORGIA MINERAL SOCIETY, INC.
P.O. BOX 15011
ATLANTA, GEORGIA 30333 - 5011

ADDRESS CORRECTION REQUESTED
PLEASE FORWARD

FIRST CLASS

DATED MATERIAL
PLEASE **DO NOT DELAY**



Happy Father's Day!!