

Tips *and* Trips



The Georgia Mineral Society

Atlanta, Georgia

Volume XXXV/Eleven

November 2006

General Meeting
7:30 PM Monday, November 6, 2006
Chamblee Library
4114 Clairmont Road
770.936.1380

“On Frozen Ground: Polar Dinosaurs and Other Critters in the Cretaceous of Australia”

Our guest speaker for the November general meeting will be Dr. Tony Martin from Emory University. Tony hails from Indiana where he earned a B.S. degree in geobiology from St. Joseph’s College. Later, Tony earned a M.S. degree in geology from Miami University of Ohio and a Ph.D. in geology from the University of Georgia, where he was advised by Robert Frey, one of the pioneers of ichnology in the U.S.

Tony has spent the last 17 years of his career at Emory University, here in Atlanta. He has taught courses on environmental geology, ecology, earth history, and paleoecology, and co-taught field courses in desert geology, dinosaurs, and modern and ancient tropical environments.

His primary research interest is ichnology, the study of traces left by organismal behavior in both modern and ancient environments. Tony has studied traces and trace fossils made by plants, invertebrates, and vertebrates throughout the Phanerozoic.

When Tony’s not digging in the dirt, he’s writing or speaking about his beloved dinosaurs and ichnology. He has published nearly 100 abstracts, papers, and chapters in edited volumes, and has presented in more than 50 professional meetings and public forums, including as an invited speaker at international symposia.

He is the author of the textbook *Introduction to the Study of Dinosaurs*, now in its second edition, and he’s currently finishing a trace fossil field guide to San Salvador Island in the Bahamas.

We are honored to have Tony come talk to us about his “serendipitous research” in Australia this year. He promises to bring lots of field photos and stories. Don’t miss this rare treat!

In December, come join us for our annual Holiday party: good food, presents, and lots of good rockhound friends. GMS will provide ham and turkey, drinks and paper goods. You bring finger-foods as covered dish, snacks, or dessert, enough for yourself and family plus another family. Presents will be swapped after the meal and a SHORT Show/Business meeting. If you would like a present, then please bring a rock or lapidary related present that costs \$10 or less to swap. If you know someone who hasn’t come to a meeting in a while, invite them to join us for party time with good friends.

Anita Westlake,
Vice President, Programs



Dr. Anthony J. Martin

Honors Program Coordinator

Senior Lecturer

Environmental Studies

Emory University

(photo from <http://www.envs.emory.edu>)



The Georgia Mineral Society, Inc.
 A Non-Profit Educational Organization
 Seventy Years of Tradition
 Objective and Purpose
 To Educate the Youth of the State
 and the Members of this Society
 In the Field of Earth Science



AFMS Education - All American Club 2003

President
 Kim Cochran
 2695 Van Court
 Snellville, GA 30278
 770.979.8331

Executive VP/Membership
 Lizabeth McClain
 378 5th Street, Apt. 3
 Atlanta, GA 30308
 404.872.6310
membership@gaminer.org

Vice President/Programs
 Anita Westlake
 1253 Spencer Drive
 East Point, GA 30344
 404.761.7849
programs@gaminer.org

Secretary
 Mary Porter
 196 High Creek Drive
 Roswell, GA
 770.998.1018
secretary@gaminer.org

Treasurer
 Dylan Porter
 196 High Creek Drive
 Roswell, GA
 770.998.1018
treasurer@gaminer.org

Gem Section Chair
 Kim Cochran
 2695 Van Court
 Snellville, GA 30278
 770.979.8331

Mineral Section Chair
 Julian C. Gray
 524 Robin Lane
 Marietta, GA 30067
 770.973.3632
minerals@gaminer.org

Fossil Section Chair
 Martha Brown
 4837 Greenway Road
 Norcross, GA 30071
 770.448.0876
fossils@gaminer.org

Junior Section Chair
 Roxanne Lopez
 1711 Donna Lynn Drive
 Smyrna, GA 30080
 770.436.0387
juniors@gaminer.org

Micromount Section Chair
 Dave Babulski
 2677 Colony Circle
 Snellville, GA 30078
 678.580.2475
micromount@gaminer.org

Immediate Past President
 Kim Cochran
 2695 Van Court
 Snellville, GA 30278
 770.979.8331

Trustee to 2007
 Bill Waggener
 9146 Sunset Drive
 Jonesboro, GA 30238
 770.478.5734
wqwaggenerii@bellsouth.net

Trustee to 2008
 Patricia Joan White
 9146 Sunset Drive
 Jonesboro, GA 30238-4520
 770.478.5734
jowhite@bellsouth.net

Trustee to 2009
 Eva Ostrofsky
 1402 Arbor Lake Court
 Hoschton, GA 30548
 678-425-2573
jowhite@bellsouth.net

Tips & Trips Editor
 Patricia Joan White
 9146 Sunset Drive
 Jonesboro, GA 30238-4520
 770.478.5734
newsletter@gaminer.org

Field Trip Co-Chairs
 George Libby 1760 Northside Dr.
 Liburn, GA 30047
 770.978.2117
 Greg Grieves
 Apt. 119
 Atlanta, GA 30318
 404.314.8143
fieldtrips@gaminer.org

May Show Chair
 Jay Gorday
 1690 Granger Court
 Chamblee, GA 30341
 770.986.0822
mayshow@gaminer.org

December Show Chair
 Kim Cochran
 2695 Van Court
 Snellville, GA 30278
 770.979.8331

Webmaster
 Jim Flora
 P.O. Box 605
 Hiawassee, GA 30546
 706.896.8040
webmaster@gaminer.org

Education Chair
 Bill Waggener
 9146 Sunset Drive
 Jonesboro, GA 30238
 770.478.5734
education@bellsouth.net

Committee Chairs

Adopt-A-Highway	Bill Waggener	770.478.5734
Assets/Equipment	Open to Volunteers	
Awards	Joan White	77.478.5734
Building	John Trimble	828.264.4811
Curator/Gem Box	Kim Cochran	770.979.8331
Facilities	Open to Volunteers	
Historian	Roxanne Lopez	770.436.0387
Hospitality	Margaret Ronan	404.636.0720
Librarian	Julian C. Gray	770.888.9331
Parliamentarian	Joan White	770.478.5734
Refreshments	Kim Prakash & Nancy Marden	770.879.0476 770.447.8542
Special Events	Bill Waggener	770.478.5734
Sunshine	Barbara Libby	770.978.2117
Telephone	George Libby	770.978.2117
Tips & Trips Labels	Joan White	770.478.5734
SFMS Rep.	Anita Westlake	404.761.7849

The article submittal due date for the December 2006 newsletter is November 10, 2006.

GENERAL MEETINGS
 General meetings are held on the first Monday of each month. In the event that the first Monday is a holiday and/or the facilities are not available, the meeting will be held on the third Monday of the month. General meetings are currently held at the Chamblee Branch of the DeKalb County Library System. Any deviations from the above schedule will be announced in Tips and Trips.

The Georgia Mineral Society on the Internet:
<http://www.gaminer.org>
 E-mail Early Notification Program: A field trip and club news update service. To join, members are requested to send in their current e-mail address to:
gms@gaminer.org.

December Show Committee Chairs

Show Chair	Kim Cochran	770.979.8331
Dealer Chair	Anita Westlake	404.761.7849
Exhibits	Jay Gorday	770.986.0822
Demonstrations	Margaret Ronan	404.636.0720
Hospitality	Nancy Marden	770.447.8542
Treasurer	Dylan Porter	770.998.1018
Advertising	Richard Hightower	706.764.2291
Dealer Dinner	Joan White	770.478.5734
Database	Joan White	770.478.5734
Auction	Kim Cochran	770.979.8331
Set Up/Take Down	Open to Volunteers	

President's Message

We have just completed our seventy-first year. And, it was a good one. We are the largest mineral society in the country and possibly in the world. We have over six-hundred members. It takes twenty-three officers to run the society. With our five sections, we are essentially six clubs. It seems as though there is hardly a week that goes by that there is not some kind of GMS activity.

When you arrive at our general meetings, Margaret Ronan welcomes everyone with a door prize ticket. We are the only group that I belong in which everyone leaves with a gift.

One of the main reasons that we come to the meetings is for the programs. Dylan Porter has arranged a very good variety of speakers with varied topics.

Mary Porter keeps track of what happens at our meetings. Her minutes are ready to be read to us at the meetings, but, for some reason, there always seems to be a motion to accept the minutes as printed in Tips & Trips. So far the motion has always carried. The number of those opposed to the motion is rising. Mary, one evening you will have to read the minutes.

Teresa Curl has the difficult job of keeping up with what we spend. It can often be confusing when trying to figure out was this bill for the club or for the show. She has also kept track of who bought what and for how much at our auctions.

Lizabeth McClain keeps up with our members. She keeps tabs on who has paid and who is coming due. Things have become much more complicated from the days when I used to keep the membership on file cards in a recipe box.

Carolyn Daniels again took on the task of serving as Tips & Trips editor. This job never ends. As soon as one issue has gone to press, it is time to think about the next issue.

Barbara Libby keeps track on the good things going on with our group. However, it always seems that there is more bad news than good when handling Sunshine. But, for Barbara to send out cards, we have to let her know of the need.

George Libby has been standing by the phone as Telephone Chair to notify those of us who do not have e-mail of any changes taking place. Those who do have e-mail are kept up to date by our web page. Jim Flora continues to do a great job with our web site. I hear that it is fantastic. I wouldn't know.

Anita Westlake keeps us informed on what is going on with the Southeast Federation. She is over all of the clubs in the state (Georgia State Director).

John Trimble heads up the committee to find a home for GMS. There have been some leads but so far everything in the areas that we want has been too expensive.

After the program is over and the business meeting concluded it is time for door prizes. Many of our members donate the goodies which we take home.

Finally it is time to visit with our friends while munching on snacks. Nancy Marden and Kim Prakash have done a very good job in lining up members to provide us with refreshments.

After we visit for a while, we go home and wait a month for the next meeting. Not really, we have other activities.

Our Sections meet monthly or every other month. We meet in a variety of homes or at Fernbank. Julian Gray has done a good job of educating us through the Mineral Section. Martha Brown took over the Fossil Section. We have learned much about pre-existing life. Dave Babulski has not been able to hold many Micro Section meetings this year, but he has provided us with many articles in Tips & Trips. We are still learning about micromounts. Roxanne Lopez spent several months teaching kids in China. She amazed them of how many things that you can do with your left hand. They are not allowed to use their left hand for many things. Our Junior Section is now active again and recently had their first trip to Stone Mountain. The Gem Section is doing very well. There are times when there is not enough seating for everyone. I know that when the meetings are at my house that I often have happy opossums outside. They don't seem to appreciate the salads thrown out but really seem to enjoy the occasional pie and veggies.

(continued on page 4)



Kim delivering his President's Message to the GMS attendees at the banquet.
(photo courtesy of Jay Gorday)

President's Message (continued)

Because of the rule banning all sales at meetings, we are not allowed to bring the Gem Box. Many of our members are not familiar with it. It is another bonus for attending the Gem Sections.

So there you go. After the section meetings we can look forward to the next general meeting.

Not so fast. You are not going to get away that easy.

We have two gem shows, one in December and one in May. Months of work and planning go on for a show to come about. Jay Gorday should be able to do it in his sleep by now. Martha Brown and Anita Westlake have the jobs of bringing dealers in and forcing us to spend money. A myriad of members work together to make the shows successful.

Should you wish to increase your knowledge, we have the GMS library. This is housed at Julian Gray's home. A wide variety of books and publications await your arrival.

We all enjoy attending meetings but we enjoy collecting as well. George Libby and Greg Grieves co-chair field trips. They have provided some interesting places to go. We are also a member club of the DMC through the SFMS. Every month there is at least one trip, sometimes two through the DMC.

Twice a year Bill Waggener meets us in Ballground, GA, for Adopt-A-Highway. We pick up a mile of trash. The lottery tickets and dentures that we find are a further bonus. The Easter egg hunt/trash pick up is especially popular. After the pick up we go eat barbecue.

Bill also serves as Special Events Chair. He plans our Christmas party and coordinates the June picnic. Bill also planned our dinner meeting here at the Colonnade. We thank you for a job well done.

When someone needs a speaker for their group, they call on Bill. He is our Education Chair. He will call upon the membership to line up speakers as requested. Bill heads up our mini-grant program. This year seven teachers received funding for science projects.

We have a group of members who oversee our funding in the society. These are our elected Trustees. Frank Decaminada especially works hard to find the best means to invest our funds.

Our auctions are always fun. We have one at each show and also the June auction. Members have the opportunity to acquire many specimens, equipment or cutting material. It is also a great place to acquire the latest collecting apparel for the discerning rockhound.

So you see, there are lots of things to do in GMS. I have mentioned many people. I hope that I have not left anyone out. But there is Joan White. Many of us work hard, but Joan works her butt off. She makes sure that I am conducting the meetings properly. She prints out the labels for Tips and Trips and she updates the mailing database for the shows. She coordinates the dealer dinners at both shows. She is heading up the Awards Committee. Everywhere you go, there she is. Thank you Joan.

The 2005 – 2006 year was great. We played, we worked, we learned and we shared our knowledge with others.

A while back someone mentioned to me that GMS has little to offer. As you see, GMS has much to offer. I thank every officer and chair. I especially thank the membership for your support. People all over the southeast have benefited through the efforts of GMS.



*Thank you,
Kim Cochran,
President*

**GMS ANNUAL MEMBERSHIP REPORT
OCTOBER 2006**

The following are our membership totals for the year. These numbers are as of October 1, 2006.

The current number of members is 614. The 614 breaks down in this manner:

- 122 junior members,
- 429 family members,
- 55 adult members,
- 7 honor members,
- and 1 life member.

Of the 614 members 200 are new and 414 are renewals.

Of the 122 junior members, 57 are new and 65 are renewals.

Of the 429 family members, 125 are new and 304 are renewals.

Of the adult members, 18 are new and 37 are renewals.

Copies of all reports are available to the membership upon request.

Thank you to everyone for your support all this past year, and I look forward to the next.

**Lizabeth McClain
Executive Vice President/Membership**

**October 2, 2006
GMS Banquet Meeting Minutes**

The meeting was called to order at 8:45 PM by President Kim Cochran at the Colonnade Restaurant, following the annual banquet. 34 people were present, including 2 visitors (Mrs. Frankie Burkes and Mrs. Helen French).

Kim Cochran – recognized past Presidents in attendance (Kim Cochran, LeRoy Brown, Frank Decaminada, Anita Westlake, Bill Waggener, and Joan White).

Mary Porter - Secretary – minutes from September meeting available. A motion was made to dispense with reading of minutes; the motion was seconded and was passed.

Teresa Curl – Treasurer – not present, no report available.

Kim Cochran – gave annual President’s report outlining GMS’s accomplishments within the past year.

OLD BUSINESS

None

NEW BUSINESS

None

AWARDS (8:57) – Joan White presented awards.

Gold Nugget – Sue Gorday, Martha Brown, Greg Grieves, Jeannette Banks, Lizabeth McClain, Margaret Ronan

Certificate of Appreciation – Bill Waggener, Anita Westlake, Teresa Curl

Member of the Year – John Trimble – Joan is working on getting a special gift for John with the help of one of his friends.

Special Recognition – Jay Gorday

To show her appreciation, Nancy Marden split the donations to the refreshment kitty between all of the people who provided goodies throughout the year.

SHOW CHAIR GIFTS

Kim Cochran (December Show Chair) presented Anita Westlake (December Dealer Chair) with a meteorite from

Texas. Anita presented Kim with a cluster of chalcedony roses from France.

Martha Brown (May Dealer Chair) presented Jay Gorday (May Show Chair) with a garnet from Pakistan. Jay presented Martha with a meteorite.

Bill Waggener (Special Events) presented Kim Cochran (President) with a fossil mink skull.

INSTALLATION OF OFFICERS (9:21)

Joan White swore in the following officers:
 Kim Cochran – President, Gem Section Chair
 Lizabeth McClain – Executive Vice President, Membership
 Anita Westlake – Vice President, Programs
 Mary Porter – Secretary
 Dylan Porter - Treasurer
 Eva Ostrofsky - Trustee

INCOMING PRESIDENT’S MESSAGE

Kim Cochran – stated that he had spoken enough as outgoing president, and by-passed an incoming speech.

ANNOUNCEMENTS

Olin Banks – announced that John Trimble has pictures of his award-winning exhibit cases.

Bill Waggener – Adopt-a-Highway – being held on October 29 at 10:00 AM. Costumes are optional.

DOOR PRIZES - door prizes numbers, which were written inside programs, were called.

A motion was made to adjourn meeting at 9:35 PM. It was seconded, and unanimously approved.

*Respectfully submitted,
 Mary Porter,
 Secretary*



GMS members attending the annual Banquet.

Those attending included Eva and Irving Ostrofsky, John Trimble, Marcella Wood, Sarah Moore, ???, Olga and Robert Jarrett, Margaret Ronan, Jeanette and Olin Banks, Helen French, and Frankie Burks seated at the table shown.

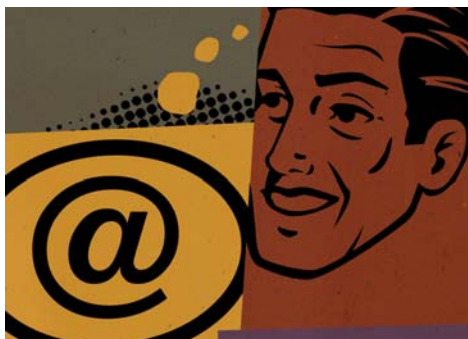
(photo courtesy of Jay Gorday)

THE GEORGIA MINERAL SOCIETY, INC.
WEBMASTER
ANNUAL REPORT TO THE MEMBERSHIP
GMS Year 2005/2006

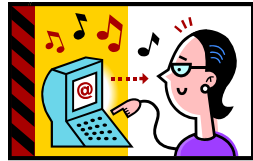
- GMS website provides an online archive of current and past years "Tips & Trips" newsletters in PDF format.
- GMS continues to give our membership a choice of receiving our society newsletter electronically, thus saving our club needed funds.
- www.gamineral.org continues to sponsor and support the DMC web pages for the SFMS.
- www.gamineral.org also supports information on the AALA and the FOM organizations.
- The Main Menu page features an RSS news feed from Geology.com on the five latest stories from Earth and Climate news.
- Added club show pictures and field trip pictures submitted by our members.
- June Picnic pictures and various other club related photographs.
- Tucson 2006 show pictures and Webmaster's Arizona/New Mexico field trip pictures
- Commercial collecting information, forms, contact information
- Expanded the number of pictures to the GMS personal collection photo pages.
- Posted new articles written by GMS members.
- Continue to post monthly updates to GMS committee and Executive Board pages before this information is available in the "Tips and Trips" club newsletter.

As our year ends, our web site contains over 500 uniquely viewable pages with about 2500 photographs on every aspect of the Georgia Mineral Society. In the year 2000, we had 250 uniquely viewable pages with over 700 photographs. We've come a long way in providing what we believe as one of the largest and best mineral and fossil society web sites on the World Wide Web.

Respectively submitted,
Jim Flora
GMS Webmaster



Show Mailing Database Report
2005 – 2006



The show mailing database was updated after the May 2006 and December 2005 shows. The current number of mailing addresses in the database is 6095. The database will be updated in October 2006 with the additions from the May 2006 show.

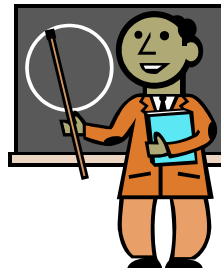
Sincerely submitted,
Patricia Joan White

Treasurer's Report

Teresa met with me last week to pass on the "Money Torch". This included numerous stops for signatures, handing over December show Dealer checks for deposit, and a very well organized documentation of our club's financials for the past 6 years. This position will certainly challenge me to stay on top of things as well as she did!! I love a good challenge, especially with the encouragement and support that everyone at GMS provides!

Dylan Porter – Treasurer
Treasurer @gamineral.org
dmpgtro@bellsouth.net

Education News



Earth Science Education continues in full swing. Kim Cochran spoke to the Columbia SC Gem and Mineral Club. Jay Gorday spoke about the Geology of Georgia to a Cobb County Elementary School through our Speakers Program. Through the Perimeter Adult Learning and Services (PALS), several GMS members have spoken to groups of adults. Kim Cochran spoke on October 3rd about "Gemstone Properties and Today's Market". Frank Decaminada spoke on October 9th about "The Garnet Group of Gemstones", October 16th about "Fluorescent Minerals, Why Some Stones Can be Stimulated to Enhance Colors", October 23rd about "Fluorites – Chemicals, Colors and Mining History", and October 30th about "A Review of Gem, Mineral and Fossil Group Activities in the Atlanta Area and Georgia".

Please let me know who is sharing their rock and fossil knowledge. Everyone has some unique tidbits that students love to share. It is encouraging to others to see that we are welcomed and well-received by clubs and teachers over the state.

Respectfully submitted,
Bill Waggener,
Education Chair

THE MICROMOUNT CORNER

AZURITE

Greetings and happy early fall from the mineral micromount bench. As I write this column it is getting cooler outside and the evenings come much earlier; the perfect time to curl up with a mug of hot tea and the microscope. This month I would like to investigate the bright blue mineral Azurite. I would guess that every micromounter has at least one azurite specimen in their collection. Chemically speaking, Azurite is a copper hydroxyl carbonate. The chemistry of Azurite is almost the same as the bright green mineral Malachite into which it readily alters. Both Azurite and Malachite are secondary alteration products of primary copper sulfides. Although both minerals form under similar conditions, Azurite is much less abundant than Malachite. Azurite is a relatively soft mineral with a hardness of only 3.5 – 4. As a result, specimens can be easily scratched and damaged by rough handling. This is particularly true for micro specimens. Cabinet size well crystallized specimens of Azurite are very hard to find and very expensive when available. However, well crystallized micromount size specimens of Azurite are readily available. Like its calcium carbonate cousin Calcite, Azurite occurs in a bewildering variety of crystal forms. There are over 45 well-known forms, but over 100 forms have been described. In terms of crystal morphology Azurite crystallizes in the Monoclinic – Prismatic form with well developed 2/m crystal symmetry. The name Azurite is derived from the Persian word lazward, meaning “blue.” Although Azurite occurs in copper deposits worldwide, the type locality is the Chessy-les-Mines, Te Rhone-Alpes, France. Some of the finest specimens come from the copper mines of Bisbee, Arizona, Tsumeb, Namibia and the ancient nickel mines of Lavrion, Greece. Shown below are some photomicrographs of azurite micromounts. All the images were photographed with a Nikon N70 camera through an Edmund Scientific trinocular stereo microscope with Kodak ASA 400 color print film. All exposures were 4 seconds in duration.

Figure – 1, Azurite, crystal spray from the Km-3 Mine, Lavrion Mines, Lavrion District, Attica Prefecture, Greece.

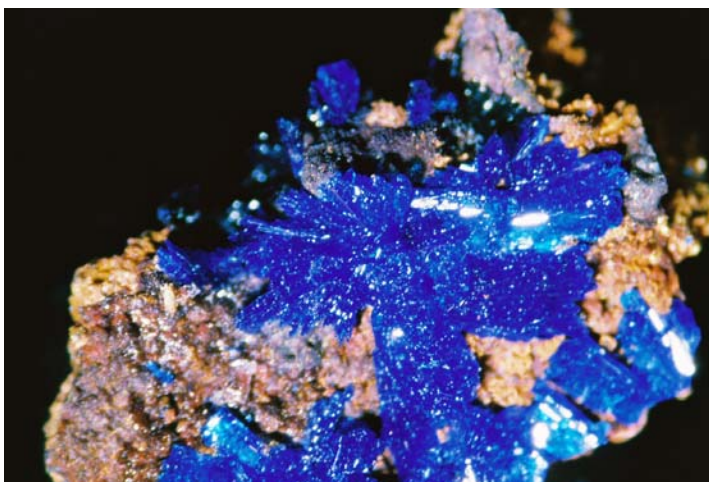


Figure – 2, Gemmy crystals of Azurite on Chalcoalumite from the Copper Queen Mine, Queen Hill, Bisbee, Mule Mountains, Cochise County, Arizona.



Figure – 3, Azurite Rosette from the Copper Queen Mine, Queen Hill, Bisbee, Mule Mountains, Cochise County, Arizona.

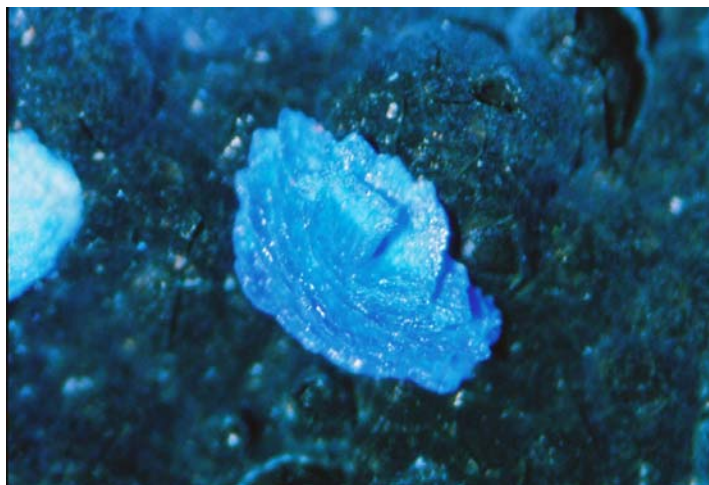
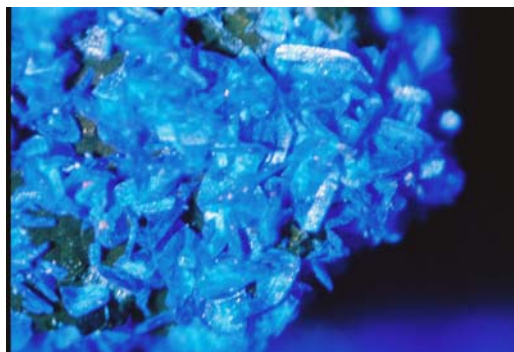


Figure – 4, Tabular crystals of Azurite from the Copper Queen Mine, Queen Hill, Bisbee, Mule Mountains, Cochise County, Arizona.



**Dave Babulski,
Chair, Georgia Mineral Society
Micromount Section**

November 2006

The Georgia Mineral Society

Collecting in the Suwannee

By George Libby

First thing I want to do is thank everyone for his or her prayers. Personally, I can pray for others but cannot pray for myself. After four MRI's, two CAT scans, a couple of spinal taps, with my muscles and nerves atrophied which made my legs as useful as if they belonged to someone else, and not even able to sit up without the help of others, I am finally coming back. I cannot thank everyone enough that prayed for me. I do have to make note of the special thanks I owe to Kim Cochran and Jim Haege for their help they gave to my wife and me.

After being unable to stand and still being unable to bend down, I am starting to feel my oats. The urge to collect is overcoming me and while at a GMS meeting I noted some sharks teeth and agatized coral that had been collected by some members. Now I have been to various locations, stretching from Calvert Cliffs to Venice Beach, and have collected a mess of teeth but never collected any large teeth as I saw before me. And as for the coral, well the site in the Withlacoochee River had been closed to our club before I could make it. This display was just too much. When I was told the rivers were never this low I decided to go.

Now my wife is more cautious than I and she was afraid I might never make it back. She also felt she could not take the humidity and she started to call around to see if anyone else wanted to go. Even now I am not sure if Kim wanted to go or if he also wanted to protect me from myself. In any case we set a date

It was dark at 4 AM when he came over to the house. We transferred his gear to my larger van and were off. We both must have been sleeping because I drove past I-675 and I-75, ending up just before the airport when I realized it and had to turn around. I hoped this would not foretell the future of the day. I thought it might have, when we exited the parkway for breakfast and the fast food restaurant was under repairs and closed. Actually that was good, as we found a small local diner full of local atmosphere. I had just never had those battered home fries or those red sausage links for breakfast before.



We soon found the boat ramp we were looking for. The water was so low, the ramp stopped at least a foot above the river. That didn't mater as we had only brought a rubber raft along. We

blew it up, parked the van and proceeded to load our gear. I really had a time as I tried to mount the electric kicker and Kim had to stand in the water trying to set it in the mount, as he was totally unfamiliar with my set up. Finally we scrambled into the raft. We were afraid the clam rake I brought along, to pick things up from the deeper holes, might puncture the raft so we left it behind.

There we were, lying down in the raft, drifting down with the

current. Then I kicked the motor into high gear and we started to move out. That is, we moved for approximately 600 feet, until we hit a shoal area when we ran aground. I know it was just over 600 feet because a sign at the ramp said to beware of the shoals when the red color showed on the pole. That pole had at least 3 feet of red showing and we saw the bottom of the pole in the mud. I climbed out of the raft to pull it over the shoals and the motor hit a rock and bounced out of the mount and fell in. When we did return I checked the motor and it is working fine, but at the time I was afraid to start it with all the water that poured out of it. The good feature was the water was only about 6 inches deep over the shoals and Kim immediately found some oyster shells and pieces of coral. I spotted a log in the river that I was able to use as a seat and I could sit and seine the gravel.

The one thing I forgot to bring was my camera. Someone told me not to forget it at the meeting and that is the one thing I did forget. I'm still kicking myself about that. Here I was, in the middle of the river and looking at the shore. With the level so low the trees were up high and their massive roots showed along the banks. What a beautiful picture that would have been.

I did great in the water and only when I tried to explore some deeper water was the river able to knock me over and I went swimming three times.

Even leaving was an experience. It would have been rough trying to get back in the raft in deep water but sitting in 6 inches of water it wouldn't move, so we decided to drag it back. The raft worked great for loading our buckets and tools. I started to pull and Kim did the pushing. That is until we hit some holes. The river again took my feet and just lifted them off the bottom and all I could do was to hang on to the raft while Kim pushed in water that was up to his nose while standing on his tiptoes.

I never found any sharks teeth or coral with those beautiful vugs that I hoped for, but I did find an arrowhead and a nautilus. Well, that is a maybe. Kim wouldn't identify them and only said it could be. They might be nothing more than a chipped piece of agate and mud ball with a hole in it. My own identification leaves something to be desired. I once came up with a large piece of petrified wood from Brilliant with small drusy crystals. When I found a piece from I-40 in Tennessee with the same look but larger quartz crystals I thought it was also wood. I later found it was coral. Now the question is whether I should bring the pieces in and let the experts look at them or just be happy in what I may have. On second thought it always pays to gain knowledge so I will bring in the pieces so I'll know what to look for the next time.

I did not find the things I hoped for but it still was a great day and I was so happy getting wet, being in the sun, in water that was as warm as bath water. We were laughing at ourselves all day and I really enjoyed my trip home. I had Kim drive.

Adopt-a-Highway Report



After I arrived late on Sunday morning, our intrepid trash collectors picked up 17 bags of highway litter. Kim Cochran dressed in Nun habit, Jay and Sue Gorday as citizen collectors, Joan and I as gypsy environmentalists attacked the trash with our new trash grabbers and made short work of the cleanup. Joan made the find of the day: a

Craftsman 13 mm open-end, box-end wrench in good condition. The collectors were rewarded with two wrapped prizes, courtesy of Kim and the GMS stash. Afterwards, Two Brothers BBQ was treated to the accompanying visit for lunch by our GMS road crew.

Thank you all for your hard work and perseverance.

We will gather again in the spring for the annual Easter trash pickup and Easter egg hunt. Please plan on coming out to help keep the Ballground Highway 5 clean and attractive for passing mineral collectors and bikers.

Hope to see you there.

Respectfully submitted,

**Bill Waggener,
Adopt-a-Highway Chair**

A GRAVES MOUNTAIN TRIP REPORT

We missed seeing any of the Georgia Mineral Society members at the 6-7-8 of Oct. 2006 rock dig at Graves Mountain.

A boy of about 6-8 years of age, Hunter Dunagan, was with his dad, Donnie Dunagan, when he was in a hole in the wall in the big pit. He had his dad look at a rock to see what it was. It turned out to be a rutile crystal of about 8 inches in length and about 4 inches wide. I helped them get it out by using my hard rock digging tools. We kept as much of the matrix off of it as possible, and the rutile and the matrix weighed 36-1/2 pounds. The crystal is very shiny and good facets on all parts of the rutile crystal showing.

I believe this will be the largest of all rutile crystals from Graves Mountain.

**Ed Doyle
GMS member**

Ed and Nelia found two boulders of rutile and busted open one boulder of lazulite plus iridescent hematite, etc., etc.

One day over 400 people; the other day there were 300 to 400+.

**John Trimble
GMS Member and
Award Winner**

At the SFMS/AFMS meeting and show in Nashville, GMS member, John Trimble placed second in the AFMS judging with his Education (EIC-1)-Master display case and placed fifth with his Mineral (BU-1)-Master display case. Photos of both cases are shown below. The photo at right is of John and President-Elect, Dr. Robert Carlson of the AFMS.



John was also chosen as member of the year for GMS at the Annual Banquet Awards. John is a dedicated member and collector. John chairs our Building Search Committee and makes time for demonstrations at our shows. He even helps with the dealer dinners.

Joan White, Editor



**Visions of Gold
Go Down the Toilet**

Being active in a mineral club means that, occasionally, you are called upon to identify things for folks. Most uninitiated are certain that they have found either a meteorite or gold. One such example was too funny and must be shared. The name has been withheld for many reasons and the person involved had a good sense of humor about the whole thing and I am certain will not mind my sharing this with you.

One day I received a call from a woman who was certain that she had gold in her toilet. Now, although funny, something in the woman's voice told me to suppress my laughter and investigate further. After a few questions I learned that she had done some research and found, correctly, that she was in line with gold occurrences in the state. She also said she was on well water. Ah-hah! The story was actually plausible. If her well was not installed incorrectly, silt could get into her water supply. As the well water passed through the toilet, gold could concentrate in the tank. Of course there are a number of things that look like gold, so I asked her to send me a sample of the gold – washed, cleaned, and dried of course. I agreed to help the woman develop her "gold mine" if the story, well, panned out.

A few days later the package arrived. Within a few minutes I was looking at the silt (lots of it) under a microscope. As expected, it was not gold, but rather flakes of weathered mica that are gold colored and sparkle. Many people with dreams of becoming wealthy mistake anything shiny for gold and this is not uncommon. Now I had to relay the bad news to the woman with the silty well water.

I called. She was not home so I left a detailed message on her answering machine. A few days later I received a nice note from the woman. Her note and the bottle of silt are precious mementos that I now keep by my microscope. In her note she thanked me profusely for listening to her story and for taking my time to examine the sample. Her closing line was priceless: "There goes my dream of a Potty of Gold."

Julian C. Gray
Mineral Section Chair



.....
Sunshine News

Sorry I am the one that is not feeling well, just a touchy stomach. Caroline Decaminada had an ulcer operation and was going to be on soft food for a while. Frank was cooking and blending it when I spoke to him at the Banquet Dinner last month.

Amber Daniels will be defending her thesis as New Mexico Institute of Mining and Technology on November 3, 2006.

I want to thank whoever supplied the Anniversary information. Please send me your anniversary date. My email address is angelonsite@bellsouth.net. Thanks.

- 11/1 Tito P. Aquino
- 11/1 John L. Tyra
- 11/1 Ronald O. (Ron) Valdiserri
- 11/2 Adam Flake
- 11/4 Jim Haege
- 11/4 Autumn Zimpfer
- 11/8 Nedra Brown Palmer
- 11/10 Maxine W. Batcha
- 11/10 David T. Callahan
- 11/11 Sandra (Sandy) Bateman
- 11/11 Luke DesJardins
- 11/12 Brinson Prince
- 11/15 Samuel C. Snipes, Sr.
- 11/15 Harriet N. Tyra
- 11/17 John Michael Bateman
- 11/21 Kristen Parker
- 11/22 Graham Giles
- 11/23 Sarah Hooper
- 11/23 Megan Wallace
- 11/23 Rachael Wallace
- 11/24 Melissa Batcha



Anniversaries:
11/22/46 Charles E. (Ed) and Nelia Doyle

Please keep me updated.

Barbara Libby,
Sunshine Chair

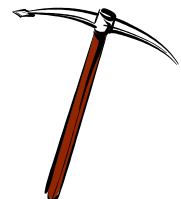
.....
Membership News

Please join me in welcoming the following new members to Georgia Mineral Society: Quinn Hazelbaker and Mark Hand of Douglasville, GA; and Barbara and Bob Richmond of Tampa, FL. We hope to meet all of you in person soon.

Everyone seems to be getting their renewals in promptly, and I appreciate that. I would encourage you to include everyone's birth dates and any anniversaries with your renewals, or you can email me with the dates. We like to acknowledge folks on their special days!

As always, if you move or change any of your pertinent information, especially your email address, please let me know. I know that no one likes their receipt of "Tips and Trips" interrupted.

Happy Rockhounding!
Lizabeth McClain,
Executive VP/Membership
mgm5258@netzero.net



Mineral Section News

The next Mineral Section meeting will be held on November 7 at 7:30 PM. We will be discussing a very important topic: cleaning and preserving mineral specimens. Minerals rarely come out of the ground ready to be displayed. We will talk about some mechanical and chemical methods of cleaning specimens that is safe for both you and your minerals. Jay and Sue Gorday are hosting. A light dinner will be provided at 6:30, but you *must* RSVP.

If you have a topic for a future meeting or would like to host a meeting, please contact me.

Julian C. Gray,
Mineral Section Chair

Gem Section News

Meeting: November 27, 2006 at 7:30 PM
Anita Westlake's home
1253 Spencer Avenue
East Point, Georgia 30344



Last month we discussed what are gems. This month we will watch a video on diamonds. Supper will be served at 6:30 PM.

RSVP: 404-761-7849.

Kim Cochran,
Gem Section Chair

Fossil Section News

We will not have a meeting in December. The next meeting will be in February. If any one has a suggestion for a program or would like to do a program, please let me know.

Tom Peard sent me information in September about fossil hunting in Aurora. According to "The Newsletter of the North Carolina Fossil Club" – 2006, Number 3, the fall collecting season for the NCFC and other fossil collecting groups in 2006 is cancelled. Future fossil trip slots will be given to individuals who participate in the NCFC November Fossil Fair as helpers or display specimens. The next NCFC November Fossil Fair will be on Saturday, November 4th, 2006 at the NC Maritime Museum in Beauford, NC. Their E-Mail address is www.ncfossilclub.org.

Martha Brown,
Fossil Chair,
770-448-0876
Wwlbougova@aol.com

Micromount Section News

There will be no micromount section meeting this month. Please check the Tips and Trips for meeting information.

Thank you!
Dave Babulski, Micromount Section Chair

Junior Section News

We will join the Graves Mountain Field Trip at 9:00 a.m. on November 4. Follow the directions and instructions for the DMC field trip. After the initial start, the juniors will talk about Field trip etiquette, the history of Graves Mountain, and what can be found at this site. Please give me a call if you are coming. I will make sure that I have plenty of handouts and door prizes.

Last month, Julian Gray led the juniors up Stone Mountain part of the way and pointed out many features. We were able to see the new Geology Exhibit at Confederate Hall. The daisies were in full bloom. We had even luck with the weather. The rain poured before we met and after we left. Here are a couple of pictures of our outing in September. Please join us in November if you can.

There will be no meeting in November. Call me if you are interested taking over the Junior chair until June of next year, please let me know.

Roxanne Lopez,
Junior Section Chair
Home: 770-436-0387
Cell: 678-491-7175



(photos courtesy of Roxanne Lopez)



November 2006

The Georgia Mineral Society

**DMC Program of the SFMS Field Trip Committee
An Official Field Trip of the Columbia Gem & Mineral
Society (Columbia, SC) (HOST)**

An Official Field Trip of the GEORGIA MINERAL SOCIETY

9:00 AM EST

Saturday, December 2, 2006

Jackson Crossroads Amethyst Mine

Wilkes County, Georgia

(FEE SITE)

The Columbia Gem & Mineral Society invites you to join us at the Jackson Crossroads (JXR) Amethyst mine in Wilkes County, Georgia in search of the finest amethyst in the southeast. Over the last three years, the mine owner, Mr. Rodney Moore, has opened up extensive digging areas for the collector.

The mine produces both specimen and cutting grade amethyst. The amethyst can be found as single crystal points, as crystal clusters, and as crystals on matrix in shades from light to very dark purple. Some of the crystals are also exquisite facet grade and may exhibit a blue flash if properly oriented. For more info about JXR (including pictures), go to www.dixieuhedrals.com.

As with any other location, you can expect to work for what you find. Collectors commonly use two different approaches to collecting at JXR. If you prefer to dig through the dumps, you will need tools such as garden rakes or potato forks. If you prefer to break rock, you will need sledge and crack hammers, chisels, and safety glasses. In general, the more material you go through on the dumps and/or the more rock you break, the better your chances of finding the better material.

JXR T-shirts, field trip guidebooks, and specimens will also be available for sale.

On Saturday, December 2, 2006, Big Uns Barbecue will smoke a pig on-site and barbecue plates will be available for a nominal charge. Yumm!!!!!!

Fees: \$15 per day per adult; children 15 years and younger are free. Each guest will be required to sign a waiver of liability. After you sign a waiver of liability and pay your admission, you will be provided a map to complete the trip to the mine (~8 miles). If you want to stay an additional day, the same fee schedule will apply for Sunday.

Directions: From I-20, take exit 172 (Hwy 17/78) north from Thomson, GA to Washington GA (20.3 miles). You will see a Huddle House and Jameson Inn on the left. Continue north on Hwy 17 an additional 10.5 miles to Tignall, GA. We will meet at the Dollar General on the left side of the road.

From I-85, take exit 173 (Hwy 17) south from Lavonia, GA through Royston and Elberton to Tignall, GA. Pass through the traffic light at Tignall and go an additional 0.1 miles. We will meet at the Dollar General on the right side of the road.

Lodging: Jameson Inn, Washington, GA

706-678-7925

Mention the JXR dig when you make reservations

Trip Chairman: Read S. Miner,

CGMS Rockguy63@msn.com 803-736-0366

"Field trips are open to all members of associated clubs of the DMC program of the SFMS Field Trip Committee and to all members of SFMS member clubs who have provided their membership with SFMS liability insurance. Because of insurance requirements, members of the GENERAL PUBLIC are NOT invited on this or any DMC program field trips!"

DMC Field Trip Policies: (DMC Field Trip Sharing Program of the SFMS Field Trip Committee)

All societies which have agreed to host a field trip and join the DMC Field Trip Sharing Program of the SFMS Field Trip Committee will be called an "associated" club. Only associated clubs will be allowed to publish DMC program field trips as their official monthly field trip. (Benefit of membership!)

Field trips are open to all members of associated clubs of the DMC program of the SFMS Field Trip Committee and to all members of SFMS member clubs who have provided their membership with SFMS liability insurance.

For insurance purposes, all associated clubs must publish all DMC program field trips as "officially recognized" field trips of their society. It is required that all persons who attend a DMC program field trip be a member, in good standing, of an SFMS club. Since a family membership covers everyone in a family who can attend, your SFMS club will need all family member names on their membership roll.

All sites visited by the DMC field trip sharing program are not to be revisited unless they are on public domain property - road cuts, national forests, etc., or on privately owned land with the owner's permission. This is the quickest way to lose access to a host club's field trip location. Therefore, if an associated club or one of its members breaks this crucial DMC field trip policy, their future DMC program field trip information will be forfeited!

Please do not visit a site immediately before a DMC program field trip. Also, do not go to a site ahead of the group on the day of the field trip. Meet and convoy with the rest of the group so that everyone will have equal access to the site.

Do not park your vehicle where it is blocking the road, a gate, or another vehicle.

Always fill in all your holes.

Don't litter.

Never disturb buildings or other facilities at a collecting site.

Only take home what you can reasonably use!

PLEASE keep your vehicle locked at all times!

DMC Program / SFMS Field Trip committee's purpose: To collect field trip information from it's member societies; schedule and coordinate field trip dates; disseminate field trip information to all member clubs so that each member society may publish this information as one of their "official" scheduled field trips.

Please reply by e-mail to: dmc@gamineral.org

World Wide Web site for the DMC is:

<http://www.gamineral.org/dmc.htm>

DMC is a program of the Field Trip Committee of the Southeast Federation of Mineralogical Societies, Inc. Copyright © All rights reserved.

"Earth first...we'll collect on the other planets later."

FERNBANK MUSEUM OF NATURAL HISTORY

767 Clifton Rd, NE
Atlanta, GA
404.929.6300



For details on these exhibits, films, and events, please visit our website at

www.fernbank.edu/museum

or sign up for our broadcast email at

http://www.fernbank.edu/museum/e_news.html.

Upcoming Public Programs:

Chattahoochee River Excursion. Saturday, November 4,
10 AM—2 PM (\$)

Vine and Culture. Wednesday, November 15, 6:30 PM.
Wine and food pairings, plus a viewing of the *Imperial Rome* exhibition. (\$)

Currently on Display:

Imperial Rome

Still Small Voices

Showing in IMAX:

(Check our website for special screenings)

Deep Sea

Greece: Secrets of the Past



Martinis and IMAX:

Friday evenings, 5:30 PM—10:00 PM.

Christine Bean, GMS Member and Geologist at Fernbank Natural History Museum

**Weinman Mineral Museum
Calendar of Events**

Special Events

**Holiday Open House
Saturday, December 2
Free Admission
10:00 AM - 5:00 PM**

Kick off the season at the Weinman Mineral Museum's Holiday Open House. Participate in activities, win a door prize, and enjoy refreshments. Be sure to take advantage of the incredible sale in the gift shop. This is also a great opportunity to bring family and friends and check out our latest temporary exhibit, *Under Your Feet: Mining in Bartow County*. Make plans now to be at the Weinman and have a day of family fun!

Cookies and Coke Learning Series

6:30 PM Cookies and Coke, 7:00 PM Lecture
Free Admission

Tannehill Ironworks Historical State Park

Dr. Jack Bergstresser

Thursday, November 2, 2006

Join Dr. Bergstresser as he discusses the historic Ironworks Parks at Tannehill and Brierfield in central Alabama. These sites are a perfect fit with the preservation mission of the Brierfield Archaeology Project.

Temporary Exhibit

***Under Your Feet: Mining in Bartow County*
September 11, 2006 - January 13, 2007**

For nearly two hundred years miners have toiled to recover the mineral resources of Bartow County. This exhibit tells the story of mining in our region through geology, mining technology, and first hand accounts from the miners themselves. From gold and iron mining in the 1800's to modern day barite and ochre mining, come learn about these unique treasures literally under our feet.

**I-75 Exit 293 at Hwy 411, (770) 386-0576
www.weinmanmuseum.org**

**Weinman Mineral Museum
PO Box 3663,
Cartersville, Georgia 30120
Ph: 770.386.0576 x401**

**Construction Progress of Tellus Museum as of
October 2, 2006**



More Information Coming Soon!

Upcoming Federation Meetings

California Federation
Lancaster, California
June 15—17, 2007

Eastern Federation
Hosts: Gem and Mineral Society of Palm Beaches, Inc.
West Palm Beach, Florida
November 17 - 19, 2006

Newark, NJ
October 6 - 7, 2007

Jackson, MS
February 23 - 24, 2008

Midwest Federation
Hosts: Midwest Mineralogical and Lapidary Society
Houghton, Michigan
August 11- 12, 2007

Northwest Federation
Butte, MT
August 3 - 5, 2007

Ontario, OR
June 20 - 26, 2008

Rocky Mountain Federation and AFMS Convention
Roswell, NM
June 5 - 10, 2007

Tulsa, OK
October 31 - November 2, 2008

South Central Federation
To Be Announced

Southeast Federation (Phase 2)
Hosts: Montgomery Gem and Mineral Society
Montgomery, AL
December 1 - 3, 2006

.....
Shows, Special Events, And Exhibits

November 4-5, 2006, Ft. Pierce, FL—St. Lucie County Rock & Gem Club. Rock and Gem Show. St. Lucie County Fairgrounds. Midway Road. Hours: 4th and 5th, 10:00 AM – 5:00 PM. Contacts: Dealer Chairman, Dennis Ponte @772.288.3296 or dennisponte@msn.com and Show Chairman, Norm Holbert @ 772.873.0787 or normholbert@bellsouth.net.

November 10-12, 2006, Pascagoula, MS—Mississippi Gulf Coast Gem & Mineral Society. 17th Annual Magnolia State Gem, Mineral & Jewelry Show. Jackson County Fairgrounds. Hours 10:00 AM—6:00 PM. Contact: John M. Wright, 228.875.9192 or osjw@datasync.com.

November 10-12, 2006, Fenton, MO - St. Louis Mineral & Gem Society. 49th Annual Show. Stratford Inn, 800 S. Highway Drive., I-44 Bowles exit. Friday 4:00 PM—8:00 PM, Saturday 10:00 AM—7:00 PM, Sunday 10:00 AM—5:00 PM. Contact: M. Perucca, 1307 Mystic Seaport, Fenton, MO 63026.

November 10-12, 2006, Louisville, KY—Kyana Geological Society. 35th Annual Show. Executive Inn Hotel, 978 Phillips Lane, I-264, right of the fairgrounds. Friday and Saturday 10:00 AM—7:00 PM, Sunday, 10:00—6:00 PM. Contact: Charles Oldham 502.241.8755 or earthsc creations@earthlink.net.

November 11-12, 2007, Jonesborough, TN—Town of Jonesborough. 2nd Annual Show. Jonesborough Visitors Center, 117 Boone Street. Saturday and Sunday 10:00 AM—5:00 PM. Contact: Tim Rice 423.646.4853 or ricetk@aol.com.

November 17-19, 2006, Marietta, GA—Cobb County Gem & Mineral Society. 21st Annual Gem & Mineral Show. Cobb Civic Center, 548 South Marietta Parkway. Hours: 17th and 18th, 10:00 AM—6:00 PM and 19th, 10:00 AM—5:00 PM. Contact: Mary Ingram at 770.427.1108, www.cobbcountymineral.org/event.html or mingram@mindspring.com.

November 24-26, 2006, Salem, VA—Roanoke Valley Mineral & Gem Society. Roanoke Valley Mineral & Gem Show. Salem Civic Center, 1001 Boulevard, Salem VA. Friday 2:00 PM-7:00 PM, Saturday 10:00 AM-6:00 PM, Sunday Noon-5:00 PM.

November 24-26, 2006, Mobile, AL—Mobile Rock & Gem Society. 12th Annual Jewelry, Gem & Mineral Show. Greater Gulf State Fairgrounds, Zeigler & Cody, Mobile Alabama. Hours: 24th, 2:00 PM-7:00 PM; 25th, 9:00 AM-6:00 PM; 26th, 10:00 AM-5:00 PM. Admission \$3.00. Children under 12 free with Adult. Contact: Ed Harris, Show Chairman, 251.865.9157 or ed_harris_jr@hotmail.com.

December 8-10, 2006, Norcross, GA—Georgia Mineral Society. 13th Annual Gem & Mineral Holiday Show. North Atlanta Trade Center, 1700 Jeurgens Court. Hours: 8th and 9th, 10:00 AM—6:00 PM and 10th, 12:00 Noon—5:00 PM. Contact: Kim Cochran at 770.979.8331 or Anita Westlake at programs@gamineral.org.

Help! Help! Help!

Help is what we need to finish preparations for the December show. If you have not already volunteered, please consider taking a little bit of your time at the show to help GMS. We are looking for demonstrations, people to help with the set up and the take down, people to man the hospitality table and various other jobs.

As always, I am looking for contributions of tasty items to be consumed at the Dealer Dinner. I know all of you have food on your mind at Thanksgiving. Please take the time to prepare your own special dish to contribute to the dinner. The dealers love it. I have been asked that we put together a cookbook. I think that is a great idea, but it will have to wait for a while. If you do have a recipe to contribute, you can email it to me. I think it would be a great success—as is the dinner. If you will volunteer to contribute an item or serve, please contact me personally. It is very difficult to coordinate helpers and food items if I don't know what to expect.



Thanks so much,
Joan White, Dealer Dinner Chair

Important Web Sites

Georgia Mineral Society

www.gamineral.org

AFMS and SFMS Websites

The SFMS Newsletter, the **Lodestar**, and AFMS Newsletter are now available for all members to read on line at:

<http://www.amfed.org/sfms> and

www.amfed.org

Friends of Mineralogy

<http://www.friendsofmineralogy.org>

.....
Questions, comments, suggestions, or contributions of articles can be made to Joan White, 9146 Sunset Drive, Jonesboro, Georgia, 30238-4520 or jowhite@bellsouth.net or editor@gamineral.org. Your suggestions are appreciated and solicited.

November 2006

Sun Mon Tue Wed Thu Fri Sat

			1	2	3	4 <small>DMC Trip</small>
5	6 <small>General Meeting</small>	7 <small>Mineral Section @ Gorday's</small>	8	9	10	11
12	13	14	15	16	17	18
19	20	21	22	23 <small>Thanksgiving</small>	24	25
26	27 <small>Gem Section @ Anita Westlake's</small>	28	29	30		

THE GEORGIA MINERAL SOCIETY, INC.
P.O. Box 15011
Atlanta, Georgia 30333-5011
www.gamineral.org
MEMBERSHIP APPLICATION

Name: _____ Birthday: month/day _____

Email: _____

Spouse: _____ Birthday: month/day _____

Spouse's email: _____

Children's Names & Birthdays: mo/day/yr (residing at home): _____

Address: _____

City: _____ State: _____ Zip+4: _____

Home Phone(s): _____ Cell Phone(s): _____ Office Phone(s): _____

Occupations: _____

Hobbies, Interests: _____

SPECIAL INTEREST GROUPS AT GMS: (Check all that apply)

Mineral Section

Micromount Section

Fossil Section

Junior Section

Gem Section

Electronic Newsletter

Dues for New Members (Single, Couple, Family) are \$25.00 per Society year. (\$20.00 + \$5.00 Initial Processing Fee)
Renewal Dues are \$20.00 per Society year. (due 12 months from the date of joining and every 12 months thereafter)
Reinstatement Dues (For Expired Membership) are \$25.00 (\$20.00 + \$5.00 Reinstatement Fee).

FAMILY MEMBERSHIPS ARE FOR THE IMMEDIATE FAMILY INCLUDING CHILDREN RESIDING WITH PARENTS.
CHILDREN UNDER 18 YEARS OF AGE ARE CONSIDERED JUNIOR MEMBERS.

PLEASE MAKE CHECKS PAYABLE TO THE GEORGIA MINERAL SOCIETY, INC.

THE GEORGIA MINERAL SOCIETY, INC.
P.O. BOX 15011
ATLANTA, GEORGIA 30333 - 5011

ADDRESS CORRECTION REQUESTED
PLEASE FORWARD

FIRST CLASS



Happy Thanksgiving