

FERNBANK MUSEUM OF NATURAL HISTORY

767 Clifton Rd, NE
Atlanta, GA
404.929.6300



For details on these exhibits, films, and events, please visit our website at www.fernbank.edu/museum or sign up for our broadcast email at http://www.fernbank.edu/museum/e_news.html.

Upcoming Public Programs and Events:

Dinosaur Birthday Bash, Saturday, August 20, 10 AM-2 PM (included with museum admission or membership)

Lecture, Georgia Rivers Survey, Ben Emanuel. Tuesday, August 23, 7pm. (free, reservations required)

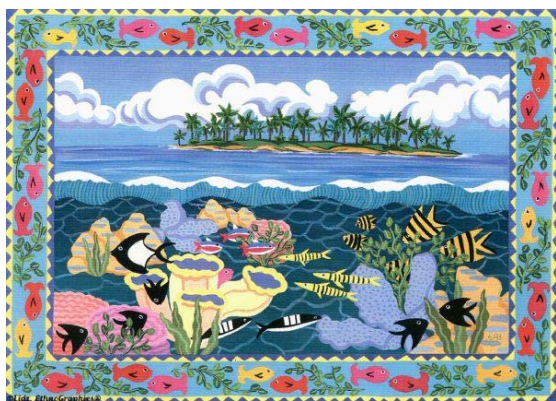
Special Exhibits:

Southern Wildlands

Grossology: The Impolite Science of the Human Body (through August 21st)

Showing in IMAX:

Check our website for special screenings)



The Living Sea

Opening July 30th: *Mystery of the Nile*



Martinis and IMAX, Friday evenings, 5:30-10:00 PM

Christine Bean, GMS Member and Geologist at Fernbank Natural History Museum

**Weinman Mineral Museum
Calendar of Events**

Cookies and Coke Learning Series

6:30 PM *Cookies and Coke*, 7:00 PM *Lecture*
Free Admission

Mineral Photography
Jeff Scovil
August TBA

World famous mineral photographer Jeff Scovil will present a lecture and slide presentation on his work. Stay tuned for more details...

Micro-Mineral Art
David Babulski
Thursday, September 1

Dave Babulski became interested in minerals and art at a very young age. His love of art led him to begin sketching and painting watercolors of his mineral specimens. This evening, Mr. Babulski will present a lecture on this mineral art in conjunction with his exhibit: **Micromineral Art: Paintings from the Microscope.**

Rockin' Saturdays

Drop-in and learn from the experts * No additional charge with paid admission * Members free!

Special Event
Historic Bartow County Mine Tour
Saturday, September 24

Bartow County's diverse mining history and geology are explored in the popular all-day excursion. A charter bus will take us to many of the county's historic and current mine sites. Tour some of the areas barite, ochre, and bauxite mines and granite and limestone quarries.

Temporary Exhibits
Lovely
Extended through August 13

Beautiful mineral specimens combined with vintage advertising, artifacts, and hands-on activities help us explore the ways that minerals are used in cosmetics.

Micromineral Art: Paintings from the Microscope
September 5, 2005 - January 14, 2006

Mineral artist David Babulski will exhibit his paintings inspired by tiny and delicate mineral specimens.

NEW PERMANENT EXHIBIT

Georgia Gold See the largest discovery of Georgia gold in recent times - over 300 nuggets plus the largest gold matrix specimen on public display!

I-75 Exit 293 at Hwy 411, (770) 386-0576
www.weinmanmuseum.org

Jose Santamaria, (GMS Member)
Director and Curator,
Weinman Mineral Museum, PO Box 3663,
Cartersville, Georgia 30120
Ph: 770.386.0576 x401
Fax: 770.386.0600

Upcoming Federation Meetings

**SFMS Executive Board Meeting
(Summer 2005)**

Eastern Federation

West Palm Beach, Florida
November 17 - 19, 2006

Midwest Federation & American Federation

Hosts: Greater St. Louis Assoc. of Earth Science Clubs
St. Louis, Missouri
August 16-20, 2005

Northwest Federation Annual Convention & Show

Hosts: Willamette Agate and Mineral Society
Albany, Oregon
August 5-7, 2005

South Central Federation Annual Convention & Show

Hosts: Austin Gem & Mineral Society
Austin, Texas
December 2-4, 2005

Southeast Federation Annual Convention & Show

Hosts: The Canaveral Mineral & Gem Society
Melbourne, FL
November 12-13, 2005

(from SFMS Lodestar, May/June, 2005)

SFMS 2005 Annual Meeting

The Canaveral Gem and Mineral Society of Melbourne, Florida will host the 2005 annual meeting of the SFMS on November 11 - 12, 2005.

The annual meeting and events will be held at the Melbourne Airport Hilton, 200 Rialto Place, Melbourne, Florida 32901 and the gem and mineral show is being held at the Melbourne Auditorium, 625 E. Hibiscus Blvd., Melbourne, Florida 32901. All federation competitions and exhibits will take place in the auditorium.

The Hilton Hotel has reserved guest rooms for this convention. Those delegates and visitors attending the convention should contact the hotel directly at 321.768.0200. Our group room rate is \$109.00 per night plus 10% tax for 1-4 people. Upgrade to a Jr. suite is \$30.00 additional per night, based on space available. The chairman and contact person for this convention is Christine Miller at 321.952.9647 or chrstnmlr@aol.com.
(from the SFMS Lodestar, May/June, 2005)

Shows, Special Events, And Exhibits

August 5-8, 2005, Spruce Pine NC - Annual Gem Show.

September 2-5, 2005, Hendersonville, NC - Henderson County Gem and Mineral Society. 24th Annual Gem and Mineral Spectacular & Sale. Whitmire Activity Building, Lily Pond Road. Hours: 2nd-4th: 10:00 A.M. - 6:00 P.M., 5th, 10:00 A.M. - 5:00 P.M. Contact: Margaret L. Johnson, P.O. Box 6391, Hendersonville, NC 28739-6391, 828.692.1249, and email at mgt.l.ed@brinet.com. **The summer SFMS board meeting is associated with this show.**

Hosted by

Henderson County Gem & Mineral Society
Hendersonville, North Carolina
Saturday, September 3, 2005

Motel: Quality Inn & Suites

201 Sugarloaf Road, Hendersonville, NC 28792
For reservations: 1.800.581.4745

Must use code: SFMS for special rate of

1 night: \$79.99 + tax

3+ nights: \$74.99 + tax, good through August 2, 2005

Motel amenities include full breakfast, lounge, indoor pool, Jacuzzi, sauna, workout facility, game room, and putt-putt golf.

Directions to Quality Inn & Suites

Traveling North or South on I-26: Exist 49A east onto Route 64 East. At traffic light take right onto Sugarloaf Road, where road veers left go right up hill to Quality Inn & Suites.

Directions to Public Works Building for Executive Board Meeting

Traveling from Quality Inn & Suites: Left at traffic light onto Route 64 West toward Hendersonville. At 7th traffic light, Harris Street, turn left to dead end of street then right onto 4th Avenue. Take next left onto Williams Street. The Public Works Building is located on the right side of the street.

Directions to Gem & Mineral Show

Traveling from Quality Inn & Suites: Left at traffic light onto Route 64 West toward Hendersonville. Continue on Route 64 West to Route 25 South (Church Avenue). Continue on Route 25 South in right lane to Kanuga Road then right onto Kanuga Road then right onto Lily Pond Road and Whitmire Activity Building on right.

**Directions to Micromount Symposium
Saturday, September 3, 2005**

Hours: 8:30 A.M. - 4:00 P.M.

From Executive Board meeting site: Left out of parking lot onto William Street then left at 4th Avenue to Grove Street. Salvation Army building located on Grove Street between 3rd and 4th Avenues.

(from the SFMS Lodestar July/August 2005)

September 3, 2005, Hendersonville, NC - Henderson County Gem and Mineral Society. 16th Annual Micromount Symposium. Salvation Army Building, Grove Street between 3rd and 4th Avenues. Hours: 8:30 AM - 4:00 PM. Contact: Emily Adams, 355 Pelham Road, Greenville, SC 29615, 864.271.3877.

September 9 - 11, 2005. Winston - Salem, NC - Forsyth Gem and Mineral Club. 34th Annual Gem, Mineral, Jewelry Show and Sale. Educational Building, Dixie Classic Fairgrounds. Hours, 9th and 10th, 10:00 AM - 7:00 PM; 11th, 12:00 noon - 6:00 PM. Contact: www.forsythgemclub.com.

More Shows, Special Events, And Exhibits

September 10-11, 2005, Clemson, SC - Pendleton District Gem & Mineral Society along with the Campbell Geology Museum and the South Carolina Botanical Garden. Upstate Gem Fest. South Carolina Botanical Garden located off Perimeter Road and Hwy. 76 at Clemson University. Hours: 10:00 A.M. - 6:00 P.M. Contacts: Christine Draais at 864.656.6205 or cdraais@clemson.edu , Dave Cicimurri at 864.656.4601 or dcheech@clemson.edu.

September 24-25, 2005, Hiddenite, NC. - Western Piedmont Mineral and Gem Society. 17th Annual Hiddenite Gem & Mineral Show. Hiddenite Educational Complex, Sulpher Springs Road. Hours: 24th, 9:00 A.M. - 6:00 P.M., 24th, 12:00 Noon - 5:00 P.M. Contact: Patty Arnold at 828.465.2769. **Rock Swap on Sunday, the 25th from 12:00 Noon to 6:00 P.M.**

September 24-25, 2005, Jacksonville, FL - Jacksonville Gem and Mineral Society, Inc. 17th Annual Gem and Mineral Show. Morocco Temple, 3800 St. Johns Bluff Road South. Hours: 24th, 10:00 A.M. - 6:00 P.M.; 25th, 10:00 A.M. - 5:00 P.M. Contact: Mary Chambliss at 904.269.4046 or email at IvoryTowers@msn.com.

October 1-2, 2005, Lexington, KY - Rockhounds of Central Kentucky. 15th Annual Show. National Guard Armory, Airport Road. Hours: 1st, 10:00 A.M.-6:00 P.M.; 2nd, 12:00 Noon--5:00 P.M. Contact: Bekki Miracle at (502) 868.0258.

(from SFMS Lodestar, July/August 2005)

Important Web Sites

Georgia Mineral Society

www.gamineral.org

AFMS and SFMS Websites

The SFMS Newsletter, the **Lodestar**, and AFMS Newsletter are now available for all members to read on line at:

<http://www.amfed.org/sfms> and

www.amfed.org

Friends of Mineralogy

<http://www.friendsofmineralogy.org>

.....
A thank you goes to all submitting material for publication in the Tips and Trips. Please send your contributions by the 10th of the month for publication in the following month's issue. Special thanks (again) to Bill Waggener for suggestions and contributions to the August issue.

Joan White, Editor

August 2005

Sun Mon Tue Wed Thu Fri Sat

	1 General Meeting	2	3	4	5	6
7	8	9	10	11	12	13
14 Junior Section Field Trip	15	16	17	18	19	20 GMS/DMC Field Trip
21	22	23	24	25	26	27
28	29 Gem Section	30	31			

THE GEORGIA MINERAL SOCIETY, INC.
P.O. Box 15011 Atlanta, Georgia 30333-5011
www.gamineral.org
MEMBERSHIP APPLICATION

Name: _____ Birthday month and year _____

Email: _____

Spouse: _____

Spouse's email: _____

Children's Names & Birthdays(residing at home): _____

Address: _____

Home Phone(s): _____ Office Phone(s): _____

Occupations, Hobbies, Interests: _____

SPECIAL INTEREST GROUPS AT GMS: (Check all that apply)

____ Mineral Section

____ Micromount Section

____ Fossil Section

____ Junior Section

____ Gem Section

____ Electronic Newsletter

Dues for New Members (Single, Couple, Family) are \$25.00 per Society year. (\$20.00 + \$5.00 Initial Processing Fee)
Renewal Dues are \$20.00 per Society year. (due 12 months from the date of joining and every 12 months thereafter)
Reinstatement Dues (For Expired Membership) are \$25.00 (\$20.00 + \$5.00 Reinstatement Fee).

FAMILY MEMBERSHIPS ARE FOR THE IMMEDIATE FAMILY INCLUDING CHILDREN RESIDING WITH PARENTS. CHILDREN 18 YEARS OF AGE AND YOUNGER ARE CONSIDERED JUNIOR MEMBERS.

PLEASE MAKE CHECKS PAYABLE TO THE GEORGIA MINERAL SOCIETY, INC.

For Official Use Only:

Date Paid: _____ Amount Paid: _____ Check # _____ Cash _____

THE GEORGIA MINERAL SOCIETY, INC.
P.O. BOX 15011
ATLANTA, GEORGIA 30333 - 5011

ADDRESS CORRECTION REQUESTED
PLEASE FORWARD

FIRST CLASS

DATED MATERIAL
PLEASE DO NOT DELAY

