

FERNBANK MUSEUM OF NATURAL HISTORY

767 Clifton Rd, NE
Atlanta, GA
404.929.6300



For details on these exhibits, films, and events, please visit our website at www.fernbank.edu/museum or sign up for our broadcast email at http://www.fernbank.edu/museum/e_news.html.

Upcoming Public Programs and Events:

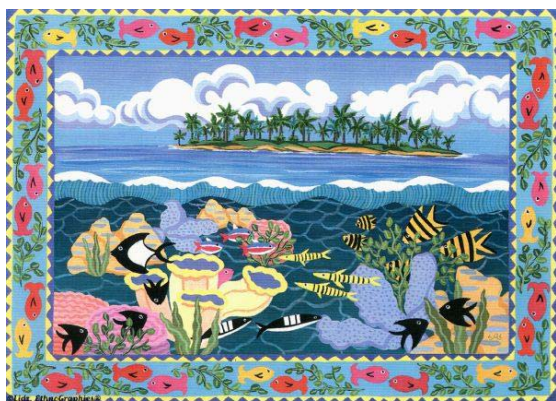
Special Exhibits:

- Beauty of the Earth*
- Southern Wetlands*
- Dunes*

Totems to Turquoise: Native North American Jewelry Arts of the Northwest and Southwest Opens October 1st.

Showing in IMAX:

Check our website for special screenings)



The Living Sea

Mystery of the Nile



Martinis and IMAX, Friday evenings, 5:30-10:00 PM

Special Screenings of *The Greatest Places* at 9:00 PM on Fridays.

Christine Bean, GMS Member and Geologist at Fernbank Natural History Museum

**Weinman Mineral Museum
Calendar of Events**

Cookies and Coke Learning Series
6:30 PM Cookies and Coke, 7:00 PM Lecture
Free Admission

Mineral History of Graves Mountain
Jose Santamaria
Thursday, October 13

The Weinman Mineral Museum has an extensive collection of specimens from Graves Mountain, Georgia's most famous mineral locality. Since 1859 the site has produced outstanding mineral specimens and it still continues to yield its riches. This story also involves local legends and myths mixed in with personalities and entrepreneurs. Please join us as museum director Jose Santamaria takes us through nearly 150 years of the mineral history of Graves Mountain. *Note: This replaces the lecture on the Kingston Saltpeter Cave originally scheduled for this date.*

Special Events

**Southeast Chapter Friends of Mineralogy
Fall Symposium - "Pegmatites of the Southeast"**
November 11-12

The Weinman will once again host this annual event. The symposium features a reception at the museum, excellent talks and a banquet with guest speaker Dr. Michael Wise from the Smithsonian. Please call the museum for registration information.

Holiday Open House
Saturday, December 3
10:00 AM - 5:00 PM

An annual tradition! Refreshments, activities, new exhibits and a sale in the Gift Shop kick off the holidays at the Weinman. *Free Admission.*

Temporary Exhibits

Micromineral Art: Paintings from the Microscope
September 5, 2005 - January 14, 2006

Mineral collector and artist Dr. David Babulski exhibits his paintings inspired by tiny and delicate specimens best appreciated by observing them through a microscope. The exhibit includes original artwork with the actual mineral specimen illustrated. In addition visitors can explore the world of microminerals with a hands-on exhibit component using micro-slide viewers and loupes.

I-75 Exit 293 at Hwy 411, (770) 386-0576
www.weinmanmuseum.org

Jose Santamaria, (GMS Member) Executive Director,
Weinman Mineral Museum, PO Box 3663,
Cartersville, Georgia 30120
Ph: 770.386.0576 x401
Fax: 770.386.0600

October 2005

The Georgia Mineral Society

Upcoming Federation Meetings

California Federation

Hosts: Calaveras Gem and Mineral Society

Angels Camp, California

June 9 - 10, 2006

Eastern Federation

Hosts: Gem and Mineral Society of Palm Beaches, Inc.

West Palm Beach, Florida

November 17 - 19, 2006

Midwest Federation & American Federation

Hosts: Midwest Mineralogical and Lapidary Society

Detroit Michigan

May 12 - 14, 2006

Northwest Federation Annual Convention & Show

Hosts: Southern Washington Mineralogical Society and Mt. Hood Rock Club

Longview, Washington

July 14 - 16, 2006

South Central Federation Annual Convention & Show

Hosts: Austin Gem & Mineral Society

Austin, Texas

December 2-4, 2005

Southeast Federation Annual Convention & Show

Hosts: The Canaveral Mineral & Gem Society Melbourne, FL

November 12-13, 2005

(from SFMS Lodestar, May/June, 2005)

SFMS 2005 Annual Meeting

The Canaveral Gem and Mineral Society of Melbourne, Florida will host the 2005 annual meeting of the SFMS on November 11 - 12, 2005.

The annual meeting and events will be held at the Melbourne Airport Hilton, 200 Rialto Place, Melbourne, Florida 32901 and the gem and mineral show is being held at the Melbourne Auditorium, 625 E. Hibiscus Blvd., Melbourne, Florida 32901. All federation competitions and exhibits will take place in the auditorium.

The Hilton Hotel has reserved guest rooms for this convention. Those delegates and visitors attending the convention should contact the hotel directly at 321.768.0200. Our group room rate is \$109.00 per night plus 10% tax for 1-4 people. Upgrade to a Jr. suite is \$30.00 additional per night, based on space available. The chairman and contact person for this convention is Christine Miller at 321.952.9647 or chrstnmlr@aol.com.

(from the SFMS Lodestar, May/June, 2005)

Shows, Special Events, And Exhibits

October 1-2, 2005, Lexington, KY - Rockhounds of Central Kentucky. 15th Annual Show. National Guard Armory, Airport Road. Hours: 1st, 10:00 A.M.-6:00 P.M.; 2nd, 12:00 Noon--5:00 P.M. Contact: Bekki Miracle at (502) 868.0258.

October 7 - 9, 2005, Dallas NC - Gaston County Gem & Mineral Society. 27th Annual Gem & Mineral Show. Dallas Park (Biggerstaff park), right off Hwy 321, Hwy 279 - Dallas Cherryville Highway. Hours: 7th & 8th, 9:00 AM - 6:00 PM; 9th, 10:00 AM - 5:00 PM.

October 14 - 16, 2005, Knoxville TN - Knoxville Gem and Mineral Society. 15th Annual Gem, Mineral and Jewelry Show. Kerbela Temple at 315 Mimosa Avenue. Hours: 21st & 22nd: 10:00 AM - 6:00 PM; 23rd, 11:00 AM - 5:00 PM. Contacts: Travis Paris at 865.691.8228 and Eileen Price at 865.694.4071.

October 14 - 16, 2005, Huntsville Gem and Mineral Society. 37th Annual Huntsville Gem and Mineral Show. Von Braun Center. Hours: 14th and 15th, 10:00 AM - 6:00 PM; 16th, 12:00 Noon - 5:00 PM. Contact: Susan Burch (President) at 256.828.1727 or jewelry_by_susan@yahoo.com.

November 4 - 6, 2005, Reidsville, NC - Rockingham County Mineral Club. 14th Annual Show. Wentworth Recreation Center, intersection of Gibbs Road and Hwy. 87. Hours: 4th and 5th, 10:00 AM - 6:00 PM, 6th, 12:00 Noon - 5:00 PM. Contact Iris Conner at 336.342.3958.

November 5 - 6, 2005, Winter Haven, FL - Imperial Bone Valley Gem, Mineral & Fossil Society. Gem, Mineral, and Fossil Extravaganza! The Nora Mayo Hall - 500 - 3rd Street, NW. Hours: 5th, 9:00 AM - 5:00 PM; 6th, 10:00 AM - 4:00 PM. Show Contact: Susie Percefull, Show chair at 863.858.1846 or Misubrea@aol.com.

November 5 - 6, 2005, Ft. Pierce, FL - The St. Lucie County Rock and Gem Club. Annual Show. St. Lucie County Fairgrounds, Midway Road. Contact: Norm Holbert at 772.873.0787.

November 11 - 13, 2005, Pascagoula, MS - Mississippi Gulf Coast Gem and Mineral Society. 16th Annual Magnolia State Gem, Mineral, and Jewelry Show. Civic Center Building, Jackson County Fairgrounds. Hours: 11th and 12th, 10:00 AM - 6:00 PM; 13th, 10:00 AM - 5:00 PM. Contact: John Wright at 228.875.9192 or email at osjbw@datasync.com.

November 11 - 13, 2005, Louisville, KY - Kyana Geological Society. 34th Annual Show. Executive Inn, 978 Pillip Lane and I - 264 at the Fairgrounds Exit. Hours: 11th and 12th, 10:00 AM - 7:00 PM; 13th, 10:00 AM - 6:00 PM. Show and Dealer Contact: Charlie Oldham at 502.241.8455.

November 12 - 13, 2005, Melbourne, FL - Canaveral Mineral & Gem Society. 29th Annual "Parade of Gems" Show and Southeast Federation of Mineralogical Societies Annual Meeting. Melbourne Auditorium, 625 E. Hibiscus Avenue. Hours: 10:00 AM - 5:00 PM. Show and Dealer Chairpersons: Bruce and Anita Lane at 321.723.0742. Contact for SFMS activities is Bill Harr at 321.777.1171.

More Shows, Special Events, And Exhibits

November 25 - 27, 2005, Columbia, SC - The Columbia Gem and Mineral Society. 38th Annual Gem, Mineral, and Jewelry Show. South Carolina State Fairgrounds in the Moore Building, corner of Rosewood Drive and Assembly Street. Hours: 25th, 10:00 AM - 7:00 PM, 26th, 10:00 AM - 6:00 PM, 27th, Non - 5:00 PM. Contact: Susan Shrader at 803.736.9317 or ashrader@mindspring.com.

November 25 - 27, 2005, Mobile, AL - Mobile Rock & Gem Society. 11th Annual Jewelry, Gem & Mineral Show. Greater Gulf State Fairgrounds, Zeigler and Cody. Hours: 25th, 2:00 PM - 7:00 PM; 26th, 9:00 AM - 6:00 PM; 27th 10:00 AM - 5:00 PM. Contact: Ed Harris, Show Chairman at 251.865.9157 or email: ed_harris_jr@hotmail.com. See website at www.geocities.com/mobilerockandgem/MRGChome.

December 2 - 4, 2005, Montgomery, AL - Montgomery Gem & Mineral Society. 35th Annual Gem, Mineral, and Jewelry Show. Garrett Coliseum on Federal Drive. Hours: 2nd, 9:00 AM - 6:00 PM; 3rd, 10:00 AM - 6:00 PM; 4th, 11:00 AM - 5:00 PM. Contact Jane Barkley at 334.277.2722 or Iris McGehee at 334.262.7275.

(from SFMS Lodestar, September 2005)

Important Web Sites

Georgia Mineral Society

www.gamineral.org

AFMS and SFMS Websites

The SFMS Newsletter, the **Lodestar**, and AFMS Newsletter are now available for all members to read on line at:

<http://www.amfed.org/sfms> and

www.amfed.org

Friends of Mineralogy

<http://www.friendsofmineralogy.org>

.....
 A thank you goes to all submitting material for publication in the **Tips and Trips**. Please send your contributions by the 10th of the month for publication in the following month's issue. Special thanks (again) to Bill Waggener for suggestions and contributions to the October issue.

Joan White, Editor

October 2005

Sun Mon Tue Wed Thu Fri Sat

						1
2	3 GMS Banquet	4	5	6	7 Grave's Mtn. Rock Swap	8 Grave's Mtn. & Glendon
9	10	11	12	13 Jose Santamaria at the Weinman	14	15 DMC Harleyville
16	17	18	19	20 Fossil Section Meeting	21	22
23	24	25	26	27	28	29
30 Paint Day and Auction	31 Gem Section Margaret Ronan's					

THE GEORGIA MINERAL SOCIETY, INC.
P.O. Box 15011 Atlanta, Georgia 30333-5011
www.gamineral.org
MEMBERSHIP APPLICATION

Name: _____ Birthday month and year _____

Email: _____

Spouse: _____

Spouse's email: _____

Children's Names & Birthdays(residing at home): _____

Address: _____

Home Phone(s): _____ Office Phone(s): _____

Occupations, Hobbies, Interests: _____

SPECIAL INTEREST GROUPS AT GMS: (Check all that apply)

____ Mineral Section

____ Micromount Section

____ Fossil Section

____ Junior Section

____ Gem Section

____ Electronic Newsletter

Dues for New Members (Single, Couple, Family) are \$25.00 per Society year. (\$20.00 + \$5.00 Initial Processing Fee)
Renewal Dues are \$20.00 per Society year. (due 12 months from the date of joining and every 12 months thereafter)
Reinstatement Dues (For Expired Membership) are \$25.00 (\$20.00 + \$5.00 Reinstatement Fee).

FAMILY MEMBERSHIPS ARE FOR THE IMMEDIATE FAMILY INCLUDING CHILDREN RESIDING WITH PARENTS. CHILDREN 18 YEARS OF AGE AND YOUNGER ARE CONSIDERED JUNIOR MEMBERS.

PLEASE MAKE CHECKS PAYABLE TO THE GEORGIA MINERAL SOCIETY, INC.

For Official Use Only:

Date Paid: _____ Amount Paid: _____ Check # _____ Cash _____

THE GEORGIA MINERAL SOCIETY, INC.
P.O. BOX 15011
ATLANTA, GEORGIA 30333 - 5011

ADDRESS CORRECTION REQUESTED
PLEASE FORWARD

FIRST CLASS

DATED MATERIAL
PLEASE DO NOT DELAY



Don't let the Goblins get you!