

A GREAT DAY AT GLENDON

On October 8, 2005, Standard Mineral Company held an open house at their quarry at Glendon, North Carolina. As it had been raining steadily for some days and the forecast was gloomy, the number of rockhounds in attendance was smaller than usual, probably 25-30. But they were hard-core rockhounds who were not about to let a little inclement weather and wretched driving conditions stop them. And, truthfully, the weather on Saturday was just about ideal. Because the sky was overcast the temperature stayed quite comfortable, and the only rain all day was a fine mist for about a minute as we stepped from our vehicles onto the property. The sun came out about 11:20 or so, which raised the temperature a good bit. Only the high humidity kept the weather from perfection.

Perfection seemed to be the word for the day when it came to collecting. Standard had been working a new area, and they had uncovered a couple of wide seams of pyrite. Everyone quickly figured this out and dug in, literally. We all had an amazing day of collecting. No one could remember doing as well on any other field trips there. A good time was had by all – until we headed for the cars. Of course, we then had to get our fully-loaded buckets and bags across the mud; the effort involved in this feat must be experienced to be appreciated. Many an intrepid rockhound learned the value of an inexpensive pair of knee-high boots. But in the end it was worth the effort, as we all went home happy, albeit tired and muddy.

Rockhounds in attendance came from Connecticut, Maryland, Virginia, Georgia, Florida, and North Carolina, and quite a few were first-timers. We all had an outstanding time.

Lizabeth and Mickey McClain
GMS members



At left: Lizabeth shows off some of her finds of the day.

Everyone went home happy from this trip.

At right: Just a sampling of the BEST collecting trip to Glendon, ever. (per the McClains).

(photos courtesy of Mickey McClain)

The Southeast Federation of Mineralogical Societies, Inc
The Friendly Federation - Founded in 1976 to serve.
SFMS Field Trip Committee

**Fort Drum Crystal Mine
Rock Swap / Field Trip
Ft. Drum, Florida
Saturday, November 12, 2005
8:00am - 5:00pm
Sunday, November 13, 2005
8:00am - 5:00pm**

Collect: Marine fossils, calcite, calcite in marine fossils, vertebrate fossils (rare)

Fee: \$20.00/day/person \$8.00/day/child (15 and under) All minors must be accompanied by an adult at all times.

Swap tables will be set up, so bring your items to trade or sell. Port-O-Lets will be provided.

Directions: From Ft. Drum going south on Hwy 441, turn left (east) on 304th street. The mine will be on the left about 3 miles down the road. There will be people at the gate at 8:00am to collect money and liability waivers.

What To Bring: Pants, sturdy shoes / boots, gloves and protective eyewear are recommended. Bring tools, buckets / cloth bag, and newspaper to collect, carry and wrap fragile specimens. The collecting area can be extremely wet and muddy. Bring a change of clothing along with plenty of water and a towel.

November Weather Statistics:
Average Temps: 79 High – 61 Low
Record Temps: 91 High – 31 Low
Average Rainfall: 1.91 inches

For more information contact:
Eddie Rucks
Phone: 863-634-4579

fortdrumcrystalmine@yahoo.com



December Show News

Everything seems to be going along smoothly. Anita is working toward signing up additional dealers to fill the voids. Jay will soon be signing up people to exhibit. As in past years, the public will vote on what they consider to be the best case.

Margaret will be looking for people to demonstrate their talents and knowledge. You might show the visitors how to make a piece of jewelry. You can demonstrate how to prepare fossils. You can do mineral identification or facet. You can even put out some specimens and just talk about rocks or fossils. It is really easy and a great way to educate the public.

Nancy will be signing up people to work the front table. These volunteers welcome visitors, direct them to certain dealers, answer questions and give out door prizes. Again, it is easy, and if you are new, it is a great way to get to know your fellow members who are working the table with you.

Teresa and Perry handle all of our advertising. We are in many mineral and lapidary publications which cost us nothing. However, we still spend over \$ 5,000.00 in advertising in newspapers.

Joan has also agreed to handle the dealer dinner. We will have forty or so dealers. There is usually between one and four people in each booth. Not only do we feed the dealers, we feed ourselves and usually some of the trade center helpers. This can be a nerve-wracking job. There have been many times where it appeared that we might be short on food and at the last minute, the food pours in. It is a good way to get an ulcer.

I will be handling the auction on Saturday and will accept donations. At this time it appears that no one wants to handle set up/take down. This is actually an easy job. All you do is line up people to help and coordinate their efforts.

We also need our members to roam around as extra security. A show does not just happen. There are months of preparation involved. And, without your help, the show will not be successful. Please help out as best your can. We work hard but we also have fun doing it.

Show Dates and Times

**Thursday, December 8th
Setup 10 AM and Dealer Dinner @ 5:30 PM**

**Friday, December 9th • 10 AM - 6 PM
Saturday, December 10th • 10 AM - 6 PM
Sunday, December 11th • Noon - 5 PM**

**Kim Cochran,
December Show Chair**

December Show Committee Chairs

| | | |
|-----------------------|---------------------|--------------|
| Show Chair | Kim Cochran | 770.979.8331 |
| Dealer Chair | Anita Westlake | 404.761.7849 |
| Exhibits | Jay Gorday | 770.986.0822 |
| Demonstrations | Margaret Ronan | 404.636.0720 |
| Hospitality | Nancy Marden | 770.447.8542 |
| Treasurer | Teresa Curl | 770.751.7313 |
| Advertising | Perry & Teresa Curl | 706.764.2291 |
| Dealer Dinner | Joan White | 770.478.5734 |
| Database | Joan White | 770.478.5734 |
| Auction | Kim Cochran | 770.979.8331 |

Set Up/Take Down Open to Volunteers

Calling All Cooks - Again !!!



It is once again time to start thinking about your favorite dish to cook and bring to the dealer dinner for the December Show. Everyone looks forward to this meal - all the dealers and the members working the show.

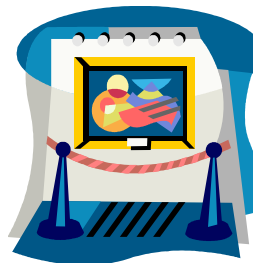
Take a moment to email or call to volunteer to bring a dish.

For those of you too busy to cook (I can certainly understand that concept), a cash donation to off-set the cost of the meat or a purchased item will be equally appreciated. And never forget, it takes a lot of hands to get everything organized and everyone fed. If you would like to help with the dinner organization or serving, please just let me know. Thanks in advance for all you help and the yummy food.

**Joan White,
Dealer Dinner Chair
jowhite@bellsouth.net or 770-478-5734**

Calling all Exhibitors

We need display cases for our December show. To me the displays are the highlight of the show. Let me know if you can put in a display case.



As an added incentive to putting in a display case, GMS gives a \$50 award to the best case and \$25 for the second best case. **SPECIAL NOTE TO JUNIORS:** In an effort to get more juniors active and putting in displays, I will give a \$20 award to the best Junior case (this is in addition to the two GMS awards).

Either call me at 770-986-0822 and leave a message if I am not at home or email me at jgorday@earthlink.net to sign up for a display case.

**Jay Gorday
Exhibit Case Chair**

Education News



The Speaker's Bureau has really picked up speed since our brief summer hiatus. Many requests are "repeats": teachers from previous years that enjoyed one of our many talented speakers and have come back for more. This is a blessing and a curse. We are blessed with speakers that do such a good job they are in high demand. We are cursed because sometimes we end up spreading ourselves too thin by taking on more than we should.

I would really be disappointed if we had to turn down a request because we didn't have enough speakers, or the ones we have were "burnt-out". Please consider becoming an official GMS speaker by contacting me and getting on the list! It's quick, it's painless, and most of all it's one of the most important and enjoyable things you can do for our hobby.

I need some "formal" help with the Speaker's Bureau. We're really becoming an active and vital part of The Georgia Mineral Society, and it's difficult for one person to handle (especially when one is trying to hire dealers and create a floor plan for the upcoming Holiday Show!) I am overwhelmed this time of year with simultaneous requests for speakers and dealers wanting to get in our show. Since I work full time and also try to get out there and speak, I'm often juggling many balls in the air and some of them are starting to drop! I need someone who can sit down and make some calls: match up speakers with requests and then follow-up with the requestor. The perfect candidate would be someone who is well organized and not a procrastinator. Please call to volunteer at 404-761-7849 after 5pm.

Here's a brief list of what we've been doing. If you spoke to a club or civic organization and you're not listed here, it's because I haven't heard from you! Please send me an email (libawc@emory.edu) and I'll include you in next month's newsletter.

September: Kim Cochran spoke to the Mid-Georgia Club in Macon, GA on "Gold". He also gave a "Gem Quiz" to the Aiken, SC Gem and Mineral Society.

October: Kim Cochran spoke to the folks at the Fort Discovery Museum in Augusta, GA on "Dinosaurs". He also spoke to the University of Tennessee at Chattanooga on "Minerals in Your Life". Kim spoke to the Northeast Gem and Mineral Society in Cornelia, GA on "Rocks". Anita Westlake had a gallery showing of her Fused Glass jewelry at Emory University. She also demonstrated the art of making Fused Glass at the Fernbank Museum. Anita gave a talk at Peachtree Elementary's Science Night on "Rocks and Minerals from GA". Doug and Caroline Daniels also spoke at Peachtree Elementary's Science Night on "Fossils". Jay Gorday spoke to Eastside Elementary in Cobb County on "Rocks/Minerals and Fossils". Jay Iacullo spoke to the Cotton Indian Gem and Mineral Society, in

Stockbridge, GA on "Gold: The Good, the Bad and the Ugly". Martha Brown spoke to a Decatur Library on "Dinosaurs". Tom Peard is always out there speaking to schools about the wonderful world of Geology. If I can pin him down, I'll write him up next month!

Anita Westlake, Education Chair



November Field Trip
Saturday, November 5th, 2005
10:00 AM
Hosted by Chattanooga Geology Club
Dale Hollow, TN

Meet at the Dairy Queen on the right side of Highway 111 at Birdstown, TN. We will be looking for crinoid stems and plates (suitable for tumbling). Bryozoans and brachiopods have been found here. We will also be looking for geodes or geode sections.

To get to the site, take I - 75 North to Chattanooga. After passing I - 24 take the second exit onto Highway 153. After crossing over the dam, you will go a little ways till you turn north onto U.S. 27. Go to about the 5th exit and exit north onto Highway 111. Stay on Highway 111 for a long way. Do not speed in Van Buren County! Go past Sparta, Cookeville and Livingston. After going through Livingston, you will cross the Obey River. Go up the hill passing an interesting road cut on both sides of the highway. Dairy Queen will be on the right.

Bring scratching tools for the crinoids or splitting tools for complete geodes. Partial geodes should be lying about on the lake shore.

This is a long trip. It takes me about seven hours. There are several motels in Livingston.

Kim Cochran
Temporary Field Trip Leader
Chattanooga Geology Club



Junior Section News



There will be no meeting in November. Call me if you are interested taking over the Junior chair until June of next year, please let me know.

Roxanne Lopez,
Junior Section Chair
Home: 770-436-0387
Cell: 678-491-7175



Fossil Section News



There will be no Fossil Section meeting in November. Martha Brown was elected the section chair at the October meeting.

**Rock Sale
November 12, 2005**

WHERE: 5290 Longmeadow Lane
College Park, GA.
TIME: 9am – 3pm

The family of Keith Adams will be selling the remaining rock collection belonging to Keith and Rosie. We invite you and your members to come by and pick up mineral specimens for their collections. Prices will be “rock bottom”. However, please keep in mind that Keith and Rosie’s collection has not been gone through and we would like to reserve the right to decline a sale. Also keep in mind that any lapidary equipment has been in the basement and may not be in very good condition due to age. Please e-mail us or give Terri a call to let us know if you and your members will be coming and/or if you need directions to Keith’s house. We look forward to seeing you all there.

Bill, Terri, Josh and Nathan Adams

Terri’s cell phone: 828-507-1558

E-mail: btjna@dnet.net

.....
A Note from the State Director

I will be attending the Southeastern Federation of Mineralogical Societies meeting in Melbourne, Florida the weekend of November 11-13 as the State Director for Georgia. Please let me know if you have any issues that you’d like me to bring before the board.

I’ve been warned that we already have a full agenda since our last quarterly meeting was cancelled due to lack of gasoline for traveling members! Since Florida is all downhill from here, I’m hoping to coast most of the way. You can keep up with Federation news by reading their official bulletin: “Lodestar” which is available online at: http://www.amfed.org/sfms/lodestar_newsletter.html. Occasionally, printed copies are available at our general meetings for those (Kim Cochran) who are computer challenged.

**Anita Westlake,
SFMS Georgia State Director**

.....
**Executive Board Meeting
Sunday, November 6, 2005
1:00 PM**

Kim Cochran’s Home
2695 Van Court
Snellville, GA 30078
RSVP 770-979-8331



Sunshine News



I, Barbara Libby, have accepted the position of Sunshine Girl. I will have the honor of reporting the years that go by in your life and the events that mark those years.

Please help me by supplying me with as much information as you can. Anniversary, New arrivals and departures, awards anything that makes you happy or sad.

The more we know about each other the closer we can be, which is a good thing.

Happy Birthday to the following GMS members:

NOVEMBER BIRTHDAYS

- 11/1 Ron Valdiserri
- 11/4 Jim Haege
- 11/5 Phillip Kinney
- 11/5 Jan Pruckler
- 11/11 Luke Des Jardins
- 11/12 Brinson Prince
- 11/15 Samuel C. Snipes. Sr.
- 11/16 Ken Blackstone
- 11/21 Kristen Parker
- 11/22 Jim Kinney
- 11/24 Melissa Batcha

The only Anniversary that I know of at the time I am writing this article is George and Barbara Libby - October 14, 1961. 44 Years. Yea.

Louis Eldridge has left Wesley Woods Center and has gone to another facility. All the information I was able to get is that the facility is out of state and he either has no phone or cannot make long distance calls. If anyone has more information please advice me for the next report.

An update on George Libby, he says he does not see any daily improvement but, by the end of a week of going to the pool and therapy both 3 times a week and traveling thru Home Depot from one end to the other for Orchards, he admits he is walking better. He still gets fatigued faster.

Brittany Daniels is going to school in Warm Springs, GA and Sara Gorday is enrolled at Georgia Tech.

Please keep me updated.

**Barbara Libby,
Sunshine Chair**

.....
New Sunshine Chair

I am happy to announce that Barbara Libby has volunteered to take the position of Sunshine Chair. Should you have information to share, please contact her at 770-978-2117.

**Kim Cochran,
President**

Membership News



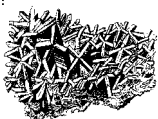
I hope everyone will join me in welcoming our new members to Georgia Mineral Society. They are Robin Jones and Margaret L. Blom, M.D., and Haakon (9/5/96) and Christian (3/11/99) Jones; Bob Richardson of Warner Robins, GA; Lorene Roach and Keonia Lowe (5/1/95) and Latreyvius Bradford (10/4/93); and Robert and Abby Smith of Washington, GA. I hope we'll see all of them at a meeting or outing soon.

With the arrival of autumn the weather becomes more comfortable for field trips, and more people will want to attend those trips. Don't let a delay in renewing your membership keep you from being able to collect that prize that awaits you; send in your renewal on time or even a little early!

Any members who have not sent in birthday information with their renewals are asked to please do so. I am interested in month, day, and year for juniors; everyone else need only send in month and day if they prefer. You may drop me a note by email if you wish to mgm5258@netzero.net.

Happy Rockhounding!

Lizabeth McClain,
Executive VP/Membership



**Mineral Section AND
Micromount Section News**

**MINERAL SECTION AND
MICROMOUNT SECTIONS TO HAVE
COMBINED MEETING THIS MONTH**

This month we will have a mineral section meeting, but will also be discussing how to temporarily combine the Mineral Section and Micromount Sections. This is necessary because of personal conflicts that Dave Babulski, Micromount Section Chair. Let's help Dave out and figure out how to make this work. All mineral and micromineral enthusiasts are encouraged to attend.

The meeting will be held on 7:30 PM on Tuesday, November 15. The topic will be the Feldspar minerals and the meeting will be held at the home of Leroy and Martha Brown at 4837 Greenway Road NW, Norcross. Light refreshments will be served during the meeting.

If you would like to volunteer your home as a meeting place or if you have a topic that you would like to share, please contact me.



Thank you!

Julian C. Gray,
*Mineral Section Chair &
Dave Babulski,*
Micromount Section Chair

**Southeast Chapter Friends of Mineralogy
Fall Symposium
"Pegmatites of the Southeast"
Weinman Mineral Museum
November 11-12**

Friday November 11, 6:30-8:00p.m. - Reception

Saturday, November 12, 8:30a.m.-5:30p.m. - Symposium
6:30 - ? - Banquet with Keynote Speaker Dr. Michael Wise.
The Weinman will once again host this annual educational and enriching event exploring the world of mineralogy. The symposium features a reception at the museum on Friday evening, a full day of excellent talks, and an evening banquet and auction at a local restaurant featuring guest speaker Dr. Michael Wise from the Smithsonian. For more information and to register please visit the chapter web site at <http://www.southeastfm.org/symposia>.

Jose Santamaria, Executive Director
Weinman Mineral Museum
PO Box 3663
Cartersville, Georgia 30120
Ph: 770.386.0576 x401
Fx: 770.386.0600
www.weinmanmuseum.org



Gem Section News

Monday, November 28, 2005, 7:30 PM
Gracia Evins' Home
1837 Hebron Hills Drive
Tucker, GA 30084

Last Month we discussed "What Are Gems?". Each year that we discuss this topic, the attending members tell me more than I tell them.

This month we will be going over a GIA lesson. Hope to see you there.

Kim Cochran,
Gem Section Chair

Last Tips and Trips

The December issue of **Tips and Trips** will be the last to be edited by Joan White. Carolyn Daniels is resuming the Editor's position for GMS. As most of you know, Carolyn Daniels placed first among the editors in both the Southeast Federation and the American Federation competitions. Carolyn is the best! Thanks go to those members contributing articles and information for publication in the **Tips and Trips** in the past year. With the show coming the second week in December, early submission of material for the December issue would be greatly appreciated to facilitate an early publication for the December issue.

Thanks again,
Joan White, Editor

November 2005

The Georgia Mineral Society

DMC Program of the SFMS Field Trip Committee
An Official Field Trip of Southern Appalachian Mineral Society - Asheville, N.C. (HOST)

An Official Field Trip of the GEORGIA MINERAL SOCIETY

9:30 AM to 5:00 PM, Saturday, November 5, 2005
Nantahala Talc and Limestone Quarry
Hewitt, North Carolina

WHERE: Nantahala Talc and Limestone Quarry, Hewitt, North Carolina (in the beautiful Nantahala gorge).

WHAT: Banded pink, gray and yellow marble, calcite, dolomite, pyrite, travertine and talc.

WHEN: November 5, 2005

COLLECTING HOURS: Participants **must arrive at 9:30 A.M. to check-in**, sign a release form, and receive a brief safety briefing. The dig will last until 5:00 P.M. There is no fee for this dig.

If **children** come, they **MUST** be in **CLOSE** proximity to their parent(s) at all times. All young people under 18 must be with an adult/parent at all times. This is a working quarry with high unstable walls so **everyone must stay away from the walls.**

SPECIAL CONDITIONS: Hard hats and safety glasses are required. It is also recommended that you wear sturdy shoes, gloves, and appropriate outer clothing. The average daily high temperature for November 5th is 64Fh, but the day will most likely start out in the mid-40s. Collecting is possible rain or shine.

WHAT TO BRING: Bring buckets and containers, rock and crack hammers, picks, sledge hammers, and flat and pointed chisels. We will drive into the large quarry and park on a mid-level bench. Bring a lunch and water and be prepared to do your "duty" in the woods as there are no nearby facilities. It will be possible to drive about ¼ mile to the quarry office for "relief", if necessary.

WHERE TO STAY: Towns within 30 miles from the meeting spot with motels, campgrounds and other facilities: Andrews; Bryson City; Cherokee; Robbinsville; and Murphy.

DIRECTIONS: We will meet at **9:30 AM** at a Roadside Park/Rest Area on US-74 at Hewitt, North Carolina and proceed as a group to the nearby quarry.

From the West: From the intersection of US-19 business and US-74E at Andrews, NC, drive approximately 12 miles east on US-74E to the roadside park/rest area on the left-hand (north) side of highway (just past the bridge over the Nantahala River).

From the East: From the intersection of US-19 business and US-74W at Bryson City, NC, drive approximately 17.5 miles west on US-74W to the roadside park on the right-hand (north) side of the highway (just before the bridge over the Nantahala River).

FOR ONLINE INFORMATION AND PICTURES OF THE QUARRY:

www.mcrocks.com/page11.html

www.mcrocks.com/images/

[FieldTripReportMikeStreeterOctober%2025.%202003.html](http://www.mcrocks.com/images/FieldTripReportMikeStreeterOctober%2025.%202003.html)

www.mcrocks.com/images/FieldTripReportEverettHarrington-October2003.html

CONTACT INFORMATION: Mike Streeter □ SFMS North Carolina Director

Email: mstreeter@charter.net Phone: (828) 667-8290

"Field trips are open to all members of associated clubs of the DMC program of the SFMS Field Trip Committee and to all members of SFMS member clubs who have provided their membership with SFMS liability insurance. Because of insurance requirements, members of the **GENERAL PUBLIC** are **NOT** invited on this or any DMC program field trips!"
DMC Field Trip Policies: (DMC Field Trip Sharing Program of the SFMS Field Trip Committee)

All societies which have agreed to host a field trip and join the DMC Field Trip Sharing Program of the SFMS Field Trip Committee will be called an "**associated**" club. Only associated clubs will be allowed to publish DMC program field trips as their official monthly field trip. (Benefit of membership!)

Field trips are open to all members of associated clubs of the DMC program of the SFMS Field Trip Committee and to all members of SFMS member clubs who have provided their membership with SFMS liability insurance.

For **insurance purposes**, all associated clubs **must** publish all DMC program field trips as "officially recognized" field trips of their society. It is required that all persons who attend a DMC program field trip be a member, in good standing, of an SFMS club. Since a family membership covers everyone in a family who can attend, your SFMS club will need all family member names on their membership roll.

All sites visited by the DMC field trip sharing program are **not to be revisited** unless they are on public domain property - road cuts, national forests, etc., or on privately owned land with the owner's permission. This is the quickest way to lose access to a host club's field trip location. Therefore, if an associated club or one of its members breaks this crucial DMC field trip policy, their future DMC program field trip information will be **forfeited!**

Please do not visit a site immediately before a DMC program field trip. Also, do not go to a site ahead of the group on the day of the field trip. Meet and convoy with the rest of the group so that everyone will have equal access to the site.

Do not park your vehicle where it is blocking the road, a gate, or another vehicle.

Always fill in all your holes.

Don't litter.

Never disturb buildings or other facilities at a collecting site.

Only take home what you can reasonably use!

PLEASE keep your vehicle locked at all times!

DMC Program / SFMS Field Trip committee's purpose: To collect field trip information from it's member societies; schedule and coordinate field trip dates; disseminate field trip information to all member clubs so that each member society may publish this information as one of their "official" scheduled field trips.

Please reply by e-mail to: dmc@gamineral.org

World Wide Web site for the DMC is:

<http://www.gamineral.org/dmc.htm>

DMC is a program of the Field Trip Committee of the Southeast Federation of Mineralogical Societies, Inc.
 Copyright © All rights reserved.

"Earth first...we'll collect on the other planets later."