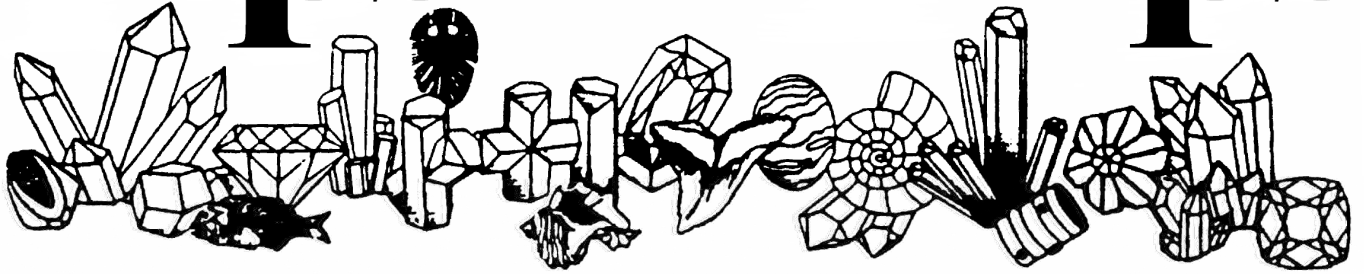


# Tips *and* Trips



The Georgia Mineral Society

\*Atlanta, Georgia\*

Volume XXXVII/Eight

August 2008

General Meeting  
7:30 PM Monday, August 4, 2008  
Chamblee Library  
4115 Clairmont Road  
Atlanta, GA 30341  
770.936.1380

## Amber: Ancient Myths, Modern Fakes

**Guest Speaker: Anita Westlake**



Amber has mystified and mesmerized humans for millions of years. Learn about amber's colorful past, its properties both chemical and magical, its mundane use as a varnish and its popular use as personal adornment.

Discover the difference between resin and sap, why some amber has insect inclusions and others don't. Be amazed at the punishment for collecting amber without a permit.

Anita will bring many samples of amber, copal and downright fakes from her personal collection. She will discuss ways to test amber for authenticity, why you should be suspicious of frogs in amber, and hear how buyers through the centuries have been burned by this warm organic gem.



**The Georgia Mineral Society, Inc.**  
**A Non-Profit Educational Organization**  
**Seventy Years of Tradition**  
**Objective and Purpose**  
**To Educate the Youth of the State**  
**and the Members of this Society**  
**In the Field of Earth Science**



**AFMS Education - All American Club 2003**

**President**

Bill Waggener  
 1909 Moores Mill Road  
 Atlanta, Georgia 30318  
 404.355.7377  
[president@gamineral.org](mailto:president@gamineral.org)

**Executive Vice President**

Lizabeth McClain  
 4000 Lindley Circle  
 Powder Springs, GA 30127  
 770.439.5756  
[membership@gamineral.org](mailto:membership@gamineral.org)

**Vice President**

Anita Westlake  
 1253 Spencer Drive  
 East Point, GA 30344  
 404.761.7849  
[programs@gamineral.org](mailto:programs@gamineral.org)

**Secretary**

Margaret Ronan  
 1224 Beech Haven Rd, NE  
 Atlanta, GA 30324  
 404.636-0720

**Treasurer**

John Trimble  
 3549 Davenport Lane NW  
 Kennesaw, GA 30144  
 770.425.5075  
[treasurer@gamineral.org](mailto:treasurer@gamineral.org)

**Gem Section Chair**

Carl Ziglin  
 995 Laurel Mill Dr.  
 Roswell, GA 30076  
 770.998.5975  
[gems@gamineral.org](mailto:gems@gamineral.org)

**Mineral Section Chair**

Jay Gorday  
 1690 Granger Ct  
 Chamblee, GA 30341  
 770.986.0822  
[minerals@gamineral.org](mailto:minerals@gamineral.org)

**Fossil Section Chair**

Martha Brown  
 4837 Greenway Road  
 Norcross, GA 30071  
 770.448.0876  
[fossils@gamineral.org](mailto:fossils@gamineral.org)

**Junior Section Chair**

Roxanne Lopez  
 1711 Donna Lynn Drive  
 Smyrna, GA 30080  
 770.436.0387  
[juniors@gamineral.org](mailto:juniors@gamineral.org)

**Micromount Section Chair**

Dave Babulski  
 2677 Colony Circle  
 Snellville, GA 30078  
 678.580.2475  
[micromount@gamineral.org](mailto:micromount@gamineral.org)

**Immediate Past President**

Kim Cochran  
 2695 Van Court  
 Snellville, GA 30278  
 770.979.8331

**Trustee to 2008**

Patricia Joan White  
 9146 Sunset Drive  
 Jonesboro, GA 30238-4520  
 770.478.5734  
[jowhite@bellsouth.net](mailto:jowhite@bellsouth.net)

**Trustee to 2009**

Eva Ostrofsky  
 1402 Arbor Lake Court  
 Hoschton, GA 30548  
 678-425-2573

**Trustee to 2010**

Marcella Wood  
 3764 Briarcliff Road, NE  
 Atlanta, GA 30345  
 404-636-6102

**Tips & Trips Editor**

Tom Batcha  
 2300 Oakland Chase ct  
 Lawrenceville, GA 30044  
 678-407-4224  
[newsletter@gamineral.org](mailto:newsletter@gamineral.org)

**Field Trip Chair**

George Libby  
 1730 Rhett Butler Dr.  
 Lilburn, GA 30047  
 770.978.2117  
[fieldtrips@gamineral.org](mailto:fieldtrips@gamineral.org)

**Committee Chairs**

Adopt-A-Highway	Ginger Peterson	404.403.4855
Assets/Equipment	Barbara Libby	770.978.2117
Awards	Carl Ziglin	770.998.5975
Building	John Trimble	770.425.5075
Curator/Gem Box	Kim Cochran	770.979.8331
Facilities	<b>Open to Volunteers</b>	
Historian	Roxanne Lopez	770.436.0387
Hospitality	Margaret Ronan	404.636.0720
Librarian	Julian C. Gray	770.888.9331
Parliamentarian	Frank Decaminada	770-992-8309
Refreshments	Kim Prakash & Nancy Marden	770.879.0476 770.447.8542
Special Events	Kim Cochran	770.979.8331
Sunshine	Barbara Libby	770.978.2117
Telephone	George Libby	770.978.2117
SFMS Rep.	Anita Westlake	404.761.7849

**The article submittal due date for the September 2008 newsletter is August 15, 2008.**

**GENERAL MEETINGS**

General meetings are held on the first Monday of each month. In the event that the first Monday is a holiday and/or the facilities are not available, the meeting will be held on the third Monday of the month. General meetings are currently held at the Chamblee Branch of the DeKalb County Library System. Any deviations from the above schedule will be announced in Tips and Trips.

**The Georgia Mineral Society on the Internet:**  
<http://www.gamineral.org>

E-mail Early Notification Program: A field trip and club news update service. To join, members are requested to send in their current e-mail address to:  
[gms@gamineral.org](mailto:gms@gamineral.org).

**May Show Committee Chairs**

Show Chair	Kim Cochran	770.979.8331
Dealer Chair	Anita Westlake	404.761.7849
Exhibits	Tom Batcha	678.407.4224
Demonstrations	John Trimble	770.425.5075
Hospitality	Richard Graveline	770.972.8714
Treasurer	John Trimble	770.425.5075
Advertising	Jay Gorday	770.986.0822
Dealer Dinner		
Database	Mary Porter	770.998.1018
Auction	Kim Cochran	770.979.8331
Set Up/Take Down	Jay Gorday	770.986.0822

August 2008

The Georgia Mineral Society

## GMS General Meeting July 7, 2008 Chamblee Library

The meeting was called to order at 7:30 PM by Bill Waggener and he recognized Anna Wood, Marcella's daughter, as a visitor.

Anita recognized Kim Cochran as our guest speaker who shook up our meeting with his talk about earth movements and plate tectonics. We learned about transform plate boundaries, divergent plate boundaries and convergent plate boundaries and their affect on earthquakes and volcanic eruptions around the world. We were enlightened of the fact that the crater, Chicxulub Structure in the Yucatan Peninsula, Mexico and the Shiva Crater, India may have originated from the same meteorite. We wondered what odds were for a meteorite or several fragments to hit the earth directly in two areas of major upheaval by tectonic plates? It was discussed that these two events probably occurred within twelve hours of each other. Bye – Bye dinosaurs and just about everything else. After this event life doesn't seem so bad. Thanks Kim it was an eye opening lecture.

### Committee Boards:

Membership – Lizabeth – We have 678 members. She also received a letter from Frieda Duffey's daughter about her mother's interest in our Club. Kim will do a write up about Frieda later.

Programs - Anita will talk about amber at our next meeting.

Secretary – Margaret – A motion was made and seconded not to read the minutes from the last meeting.

Treasurer – John – He pulled \$107,000 from Merrill Lynch and placed \$87,000 in a Business Money Market Account at Wachovia and \$20,000 was placed in a checking account for more interest at Wachovia. He could not totally close the account at Merrill Lynch so we will have \$70 there until it can be closed. We also have 2 CD's at SunTrust totaling \$170,000 at 5.15% until they mature in November. We have about \$277,000 total. He will work up a report about specifications for a building site to be published later.

Gem – Carl – We had a good meeting at Marilyn's, this month will be at Jay's on faceting. In August we will meet at Gracia's and have a test on amber.

Mineral – Jay – We will meet on July 15 at Richard's for optical properties.

Fossil – Martha – In August we will discuss trilobites.

Juniors – Roxanne – July 19 tubing on the Chattahoochee at 11:00 AM in Helen, GA.

Tips and Trips – Tom – All is well. Work shop schedules are published. In June was the first session with the second, third, and fourth to come.

Field Trips – George – SE Federation trip July 19 to Diamond Hill, Aug 9, to Clio Ala. for petrified wood, and Aug 16 to Crabtree Mine.

Education – Bill – We had Science Olympiad. We have 7 applications for mini-grants under evaluation. At the end of

May the Georgia Burn Foundation along with 10 people from our club entertained burn victim children with the wonders of rocks in our world. August 9, the Gwinnett Environmental Heritage Center will have a Georgia mineral day for about 20-25 children to make rock ID kits. On Labor Day, Stone Mountain will have a rock and mineral day at the Confederate Memorial Hall. Anita talked to Cotton Indian Club about meteorites. Tom had a gem tree class for the Mid Georgia Club. Jeannette said we have four scholarships this year for Mayo education and four applications.

Special Events – Kim – Our Banquet is Oct 6, 2008.

Library – Julian – No one uses it and he may have to move the six cases somewhere.

Refreshments are from the McClains, Porters, and Richard. Thank you.

Adopt a Highway – Next one on Halloween, wear something original.

Sunshine – Martha is recovering from foot injury, and Anita's Carpal Tunnel is doing well after surgery.

SFMS – Anita – There is a quarterly Executive Business Meeting at the end of this month, July 26, at Dillard. We need a presidential delegate to represent the GMS. Olin Banks accepted the position. Thank you. He was nominated and accepted. In Franklin there will be a faceting, gem and mineral show mentioned by John Iacullo. Stamps – Olin – Some were donated tonight.

### Other Business:

The Meteorite Association of Georgia is one year old and Anita is the president. On July 20 is the next meeting. Marty Zinn will have a show Aug 15, 16, and 17 in Cartersville. There will be 90 dealers and this is his first show in the Southeast.

Friends of Mineralogy meet Aug 16 with four speakers on gemstones. Check with Anita she is also the president. (Coffee and Danish).

GMS donated \$5000 to Tellus so we are founder circle members and have been invited to a hard hat tour on July 11 at 5:30 PM or July 26 at 10 AM - check with John Trimble.

### New Business:

Executive Board Meeting concerning next years budget is Aug 20 at Eva's. Please RSVP, lunch at noon and meeting at 1:00 PM. All members are invited to the meeting. John Trimble opted for the calendar year for the treasurer. He believes we need to change our fiscal year which will be brought to the Trustees attention at the Board Meeting in August.

We had 32 people in attendance at our meeting tonight. There was no more business to discuss so door prizes were handed out with visitors going first. The meeting was adjourned and seconded at 9:30 PM.

Graciously submitted,  
Margaret Ronan

**President's Message**

Howdy, Please let me begin with a postscript for last month: Generally Atlanta's creek water is not safe to drink, but OK to wade and sit. HOWEVER, some creeks are posted with unsafe water pollution conditions. In these posted creeks you may be warned to stay out of the water. Please heed any posted warnings. The rocks, if collected, may be cleaned with soap and water and become reasonably safe to handle and display. Just don't try to show color or structure by licking the rocks (as a few of us have been known to do).

On to more warnings: Several of our members were collecting at an often visited site on river banks under Corp of Engineer management. As has been done many times in the past by Boy Scouts and other youth groups, these folks were surface collecting for small mineral specimens. Several Corps representatives observed the activity and proceeded to issue tickets for destruction of government property. These instructions were issued: No Where, No How, Not Ever on Corps of Engineer land. This position doesn't seem right or reasonable for our hobby activities. I am pursuing clarification and will report when further information is available.

Lastly, on a positive note, I collected some very interesting pyritic porphyroblastic two-feldspar granite gneiss (layered gneiss with 1-2 cm orthoclase crystals, smaller oligoclase and quartz crystals, and some pyrite crystals on fracture surfaces), courtesy of the work of the GA DOT. I even passed by the pile of rocks the first time I went past the bridgework. Of course, two days later, I returned to help the contractor dispose of the rocks. I met several interested, very nice gentlemen. We shared our geologic knowledge, they went about their business, and I acquired several hundred pounds of classroom specimens and door prizes. Hopefully, one of the gentlemen will join GMS and bring his son to become an official rock-pup.

Just keep your eyes open. Opportunities are everywhere. I hope to see you in the field soon.

Respectfully submitted,  
Bill Waggener, President



**Membership**

There are no new members this month but plenty of renewals. When you do renew, please send them in on a timely basis, everyone, and please let me know if you have any email or address changes. You may email me at [mgm5258@netzero.net](mailto:mgm5258@netzero.net) or call me at 770-439-5756.

Happy rockhounding!  
Lizabeth McClain  
Executive Vice President



**Board Meeting**

Sunday, August 10th, 2008  
1402 Arbor Lake Court  
Hoschton, GA 30548  
678-425-2573

The next board meeting will be held on August 10th at the home of Eva and Irving Ostrofsky. The meeting is open to all members. Lunch is at noon, meeting at 1:00PM. Please contact Eva if you plan to attend.



**July Education Report**

GMS members continue to spread their knowledge of the earth sciences. Kim Cochran talked to Cobb County G&MS on Gemstones, Athens Rock and Gem Club on Caves and the Chattanooga Geology Club on State Gemstones. Tom Batcha conducted a Gem Tree class for the Mid-Georgia G&MS. Anita Westlake spoke to Cotton Indian G&MS about Meteorites.

Mickey McClain and Roxanne Lopez both can use support in their classrooms. Please ask them what would be most helpful. Mickey volunteered and assisted a Paulding County middle school teacher with the installation of a weather station. Having found the station in a box in a closet, this teacher asked for help and Mickey earned another star for his crown. The teacher followed through with a Minigrant application requesting funds to allow her to update and operate the station. Teachers helping teachers mean that your children get the maximum benefit of school.

Four Holly Camp Earth Science Education Minigrant 2008/2009 applications have been awarded to Georgia teachers. Details will be announced in the September T&T. The applications for 2009-2010 will be available around Christmas, 2008. Please encourage all Earth Science, Earth Systems and elementary teachers that you know to apply for the \$300 Minigrants.

The Georgia Mineral Day at the Georgia Environmental & Heritage Center is scheduled for 2:00 to 3:00 PM on 09 August, 2008. Currently, Kate Pittman and I are planning to help with this event. Two more volunteers will be welcome.

The Rock & Mineral Day at Stone Mountain is scheduled for 12:00 to 4:00 PM on Labor Day, Monday, 01 Sep 2008. We could use 6 volunteers for all or part of this time. Please plan on helping us showing our best face on Labor Day at Stone Mountain Park.

Please let me know who is sharing their rock and fossil knowledge. Everyone has some unique tidbits that students love to share. It is encouraging to others to see that we are welcomed and well-received by clubs and teachers over the state.

Respectfully submitted,  
Bill Waggener, Education Chair

**Gem Section**

**August meeting:**

Monday August 25th, 6:30 dinner, 7:30 meeting  
We will surely have an interesting presentation, but as of this writing, the program for August is up in the air. The meeting, however, will be well grounded at:

The home of Gracia Evins  
1837 Hebron Hills Dr  
Tucker, GA 30084



Please phone 770-939-1584 to RSVP.

**From South on I-285** - Take Highway 78 (Stone Mountain Freeway) exit onto Cooledge Road, left onto Cooledge Road, right onto Lawrenceville Highway, right onto Hebron Hills Drive. Or, I. 285, exit onto Lawrenceville Highway and turn right, right onto Hebron Hills Drive

Answer to last month's Gem Section Trivia:  
What is a tumbled gem stone called? Baroque

Gem Section Trivia:  
What is green corundum called?

Many thanks to Marilyn Tarantino for hosting the June meeting and a delicious dinner. Thanks also go to pinch hitter Kim Cochran for his cruel and unusual gem identification test. Martha Brown was on the injured reserve list.

For next year's Gem Section chair, the June meeting attendees unanimously elected . . . me. I will endeavor to continue to do the so-so job you have come to expect.

Hope to see you at the meetings, where we will also discuss future programs. Come and let us know what you would like to do with the gem section!

Carl Ziglin,  
Gem Section Chair gems@gaminal.org

**Micromount Section**

There are no micromount section meetings scheduled this summer. Stayed tuned for more information in the fall.

David Babulski

**GMS Workday**

Please keep Saturday, October 11<sup>th</sup> available on your calendar. We will be having a workday at my house. At this time I do not know what we will be doing. That will be figured out by October. For those who participate we will hold a 100 lot auction afterwards.

Kim

**October Dinner Meeting**

Monday October 6, 2008  
Colonnade Restaurant  
Cheshire Bridge Rd, Atlanta

Time, cost and other details will be in the September issue of Tips and Trips. Please put this date on your calendar.

Kim

**Fossil Section News**

DATE: August 18, 2008  
TIME: 7:30 PM  
LOCATION: LeRoy & Martha Brown's Home  
4837 Greenway Road,  
Norcross GA 30071  
PHONE: 770/448-0876 For directions & RSVP

August's meeting will be on the trilobites. Please bring your largest or smallest or most interesting. The first fossil section meeting was on trilobites and it will be fun to do it again.

Thank You,  
Martha S. Brown



**Junior Section**

No Meetings in August  
For any questions call  
Roxanne Lopez  
678-491-0489

**Mineral Section**

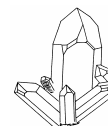
I would like to thank Richard Graveline for hosting the July Mineral Section Meeting. If you did not attend the meeting, you missed a good meeting.

The next Mineral Section Meeting will be in September on the 16th at Kim Cochran's House in Snellville. The topic for this meeting will be Corundum.

I also want to mention the Friends of Mineralogy meeting which will be held during the Marty Zinn show next to Tellus in Cartersville. You will have to call if you want more information because I do not have all the details available at the moment.

Once again, thanks to Richard for hosting us in July. I look forward to seeing everyone at Kim's house for the September Meeting.

Jay Gorday  
Mineral Section Chair



Sunshine News

Martha Brown is recovering from a foot injury, and Anita Westlake is doing well after Carpal Tunnel surgery. Please send information on news you would like to share with GMS. My email address is [angelonsite@bellsouth.net](mailto:angelonsite@bellsouth.net). Thanks. You are all in my prayers, be well and you will hear from me next month.

Barbara Libby,  
Sunshine Chair

AUGUST 2008 BIRTHDAYS

- 8/01 Jean Bailey
- 8/01 Madhavi Barru
- 8/01 Crystal Daniels
- 8/01 William Marose
- 8/01 Dr. Wesley Simms
- 8/03 Jesse Clark
- 8/03 Will Horton
- 8/04 Roynan Krebs
- 8/04 David Lann
- 8/04 Casey Sosebee
- 8/07 Gaye Baxter
- 8/07 Lola Halpin
- 8/09 Peyton Lathem Waggener
- 8/10 Aimee Hebert
- 8/11 Amy Rothschild
- 8/11 Cindy Trentini
- 8/12 Mary Ann O'Brien
- 8/15 Andrew Clark
- 8/16 Colin Blankenship
- 8/16 Zackery Fincher
- 8/16 Courtney Southerland
- 8/17 George Libby
- 8/17 Chris Nehrling
- 8/18 Laetitia Sennavoine
- 8/19 Charles Keith Fincher
- 8/19 Chris Lee
- 8/19 Barbara Remmers
- 8/20 Sherion Stewart
- 8/23 Chandler Andrews
- 8/23 Susan Calderon
- 8/24 Mike Armour
- 8/25 Josh Hyaduck
- 8/25 Todd Morgan
- 8/25 Peggy Weathers
- 8/26 Jared Cormier
- 8/27 Carolyn Buckels
- 8/29 Brittany Krupich
- 8/29 Phyllis Love
- 8/30 Aaron Barth
- 8/30 Dana Mudd
- 8/31 Jim Klinger
- 8/31 Carl Rogers
- 8/31 Elena Smart
- 8/31 Jay Sword



ANNIVERSARIES

- 8/01 Randy and Julia White
- 8/24 Dylan and Mary Porter
- 8/31 Mickey and Lizabeth McClain

Frieda Duffey

Last month GMS lost a good friend. I first met Frieda in 1974 on the GMS bus trip to Hot Springs, Arkansas. I did not know a single member when I attended the trip. By our return I felt very welcomed partly due to Frieda. She loved collecting and camping. We soon went out nearly every week to some destination in the southeast. It didn't matter if it was summer or winter. Rain, snow and hail made no difference. I hate to cook outside, Frieda loved it. We had great meals. Lunch however could be another matter, imagine trying to slice a chunk of extra sharp cheddar cheese with a plastic knife. We ate many sandwiches with one inch cheese slices. That was rough.

Frieda loved to travel. She drove to Alaska and back. One summer she loaded up her grandchildren and headed to Mexico City. It didn't matter where she went. It was an adventure. She was very active with her church. She and I spent many winter nights working night shelters at Central Presbyterian and The Shrine of the Immaculate Conception. She assisted with Jubilee Partners. This was an organization through the church, which during the civil war in El Salvador brought out people slated for execution. They would be brought to Comer, Georgia until they could be resettled in the Netherlands or Canada.

Frieda never wanted to hold office in GMS. She was one of those people who constantly working behind the scenes. Twelve years ago she moved to Macon to be closer to family. She became active with the Mid Georgia Gem & Mineral Society. She remained active also with her non-mineral activities. She made and sold packs of greeting cards which she made with pressed wild flowers which she had picked. The proceeds went to the youth ministry at her church. She was named Volunteer of the Year by the local Chapter of the Red Cross.

After many years of pain and discomfort Frieda was diagnosed with Lupus. She tried not to let it get the best of her but there were many times when she could not do what she wanted. A few months ago she had a fall which broke her hip. Last month we lost her through complications. Many of our present members did not know her. I wish that they had. Frieda was one of the kindest and most giving people that I have ever known.

I will miss her.  
Kim

## Personal Collection for Sale

August 24, 2008

9am-2pm

Anita Westlake

1253 Spencer Ave

East Point, GA. 30344



**20% of Sales Will Go to the GMS Building Fund**

I have had the pleasure of collecting rocks, minerals and fossils for over 20 years. My house has become its own geo-hazard and is sinking under the weight; I must lighten the load. **80% of my personal collection is for sale.** Many have been cataloged, appraised and come with the original labels.

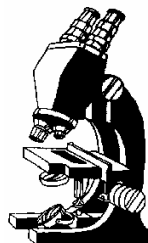
All pieces are priced individually; some way below current market value. I will accept cash and personal checks. If you have your own flats, bring them along because I guarantee you'll want to fill them up!

## Wine and Cheese PREVIEW SALE

**RSVP 404-761-7849**



**Friday, August 22<sup>nd</sup> from 7pm-10pm.**  
**Admission for the preview is \$20.00 per person.**  
***Avoid the crowds and get the best selection***



## THE MICROMOUNT CORNER

### ORPIMENT

Dr. David Babulski

A rare mineral, Orpiment is a low temperature hydrothermal species typically found in veins along with Stibnite, Lead and Silver or Gold ores, hot springs or fumaroles and most often in close association with the arsenic sulfide Realgar of which it is common alteration product. Chemically, Orpiment is arsenic sulfide, with the chemical formula:  $As_2S_3$ . This is very different from the formula for Realgar which is:  $AsS$ . Orpiment crystallizes in the Monoclinic crystal system with pronounced  $2/m$  crystal symmetry. This means that the crystals have an imaginary plane aligned with the "a" and "c" axes of the crystal. If the crystal is rotated about this imaginary plane, one side of the crystal is the mirror image of the other, hence the symbol "m" which means "mirror plane". The number "2" means that the crystal, when rotated about the plane of symmetry has two sides. More minerals crystallize in the monoclinic system than any other. Some examples are: Azurite, Gypsum, Orthoclase and Heulandite. Micromount crystals of Orpiment are prismatic with a pseudo Orthorhombic appearance. It can also occur in foliated, columnar or fibrous masses. In most cases color of Orpiment crystals is some variant of the color yellow, typically lemon yellow to yellow-orange. One of the interesting aspects of orpiment is perfect cleavage yielding what looks like thin plates or flakes that are sectile (You can cut it with a knife) and flexible but not elastic. This means that micromounts of Orpiment must be handled with great care as crystals can be easily damaged. This mineral species, like Realgar, is sensitive to light. If exposed to light for a long time, the mineral will crumble into a yellow dust. Specimens of Orpiment must be kept in the dark when not being examined.

The name Orpiment comes from the Latin, auripigmentum, in allusion to the vivid golden hue. From a micromounters point of view, Orpiment is a rare mineral species. Good micromount specimens of Orpiment can be had from mineral dealers, but be prepared to pay a princely sum for them as this is very rare mineral species. Shown below are photomicrographs of micromount specimens of Orpiment from the Twin Creeks Mine, Potosi District, Humboldt County, Nevada. Magnification is 30X on Kodak ASA 400 color print film.



Figure – 1



Figure – 2

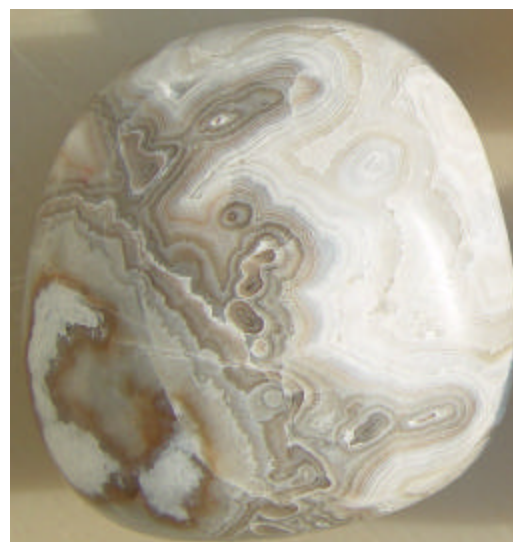
Until next time, may all your skies be blue and all your vugs crystal filled.



### Lace Agate Cabs from Summerville

Here are photos of three pieces of lace agate that my daughter Kyra and I collected from the Summerville quarry on June 7 and on one earlier trip. I tried cabbing more pieces but most were too soft.

Bob Dolezal





## Friends of Mineralogy

**Dedicated to the advancement of serious interest in minerals and related activities**

We are collectors, professionals, and curators who share a love of mineral specimens and the desire to promote understanding and appreciation of mineralogy.

### Who We Are

The Friends of Mineralogy (FM), formed at Tucson, AZ on February 13, 1970, operates on a national level and also through regional chapters. It is open to membership by all. FM's objectives are to promote, support, protect and expand the collection of mineral specimens and to further the recognition of the scientific, economic and aesthetic value of minerals and collecting mineral specimens.

FM has a long association with The Mineralogical Record. It helps produce locality indexes for specimen mineral localities published in Rocks and Minerals, and is co-sponsor, with the Tucson Gem & Mineral Society (TGMS) and the Mineralogical Society of America (MSA), of the annual Tucson Mineralogical Symposia. Among its activities it also sponsors awards for best articles each calendar year in The Mineralogical Record, Rocks & Minerals and extraLapis English and gives special recognition at the February Tucson Gem and Mineral Show for educational displays which help explain an aspect of Mineralogy.

The Friends of Mineralogy is affiliated with the American Geological Institute and the Mineralogical Society of America, as well as with Rocks & Minerals and the Mineralogical Record. Both of these magazines provide FM space and publish news of its activities from time-to-time. FM in turn supports these magazines in various endeavors.

## Regional Chapters

### Colorado Chapter

For Chapter information, contact Richard Parsons, President; Tel: 303-838-8859; E-mail: [richard.parsons@att.net](mailto:richard.parsons@att.net).

### Midwest Chapter

For Chapter information, contact Dave Straw, President; 1555 Capri Lane, Richmond, IN 47374; E-mail: [strawdl@aol.com](mailto:strawdl@aol.com).

### Pacific Northwest Chapter

For Chapter information, contact Wes Gannaway, President, 1604 Brookwood DR, Ferndale WA 98248; Tel: 360-384-4209; E-mail: [debnwes@comcast.net](mailto:debnwes@comcast.net).

Chapter Website: [www.pnwfm.org](http://www.pnwfm.org)

### Pennsylvania Chapter

For Chapter information, contact: Doug Rambo, President, 302-739-9945; email: [drambo417@comcast.net](mailto:drambo417@comcast.net); or Arnold Mogel, Past President, email: [Plоче@Verizon.net](mailto:Plоче@Verizon.net).

Chapter website: [www.geocities.com/sajas\\_geo/FM/index.htm](http://www.geocities.com/sajas_geo/FM/index.htm).

### Southern California Chapter

For Chapter information, contact Bob Reynolds, President, 220 South Buena Vista St., Redlands, CA; Tel. 909-781-9310; E-mail: [Jreynold@empirenet.com](mailto:Jreynold@empirenet.com) or [Bob.Reynolds@Lsa-assoc.com](mailto:Bob.Reynolds@Lsa-assoc.com).

Alternate contact is Bob Housley; E-mail: [rhousley@its.caltech.edu](mailto:rhousley@its.caltech.edu).

Chapter website: <http://www.mineralsocal.org/scfm>, features *Minerals of California* on-line..

### Mississippi Valley Chapter

For Chapter information, contact Bruce Stinemetz; 816-795-1641; Email: [bruce.stinemetz@ssa.gov](mailto:bruce.stinemetz@ssa.gov)

### Southeast Chapter

For Chapter information, contact Anita Westlake, President, 1253 Spencer Ave, East Point, GA 30344; Tel: h) 404-761-7849, w) 404-727-4066; E-mail: [libawc@emory.edu](mailto:libawc@emory.edu)

### Tucson Gem and Mineral Society

Contact, Peter Megaw [Tgmmsgb@azstarnet.com](mailto:Tgmmsgb@azstarnet.com)

### National President

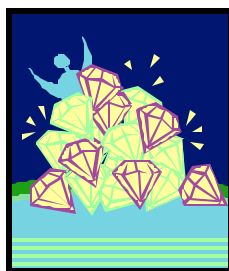
Virgil Lueth, New Mexico Tech, 801 Leroy Place, Socorro, NM 87801

E-mail: [vwlueth@nmt.edu](mailto:vwlueth@nmt.edu)

Friends of Mineralogy,  
SE Chapter Annual  
Fall Symposium

August 16, 2008  
9am-1pm

“Gemstones”



**Guest Speakers:**

**Bob Cook:** “*Jacksons Crossroads Amethyst Site*”

**Ed Spear:** “*Hiddenite Emeralds*”

**Terry Huizig:** “*Madagascar Trip*”

**Karen McGinn:** “*Diamonds*”

Cost: \$10.00 if registration in by 8/8/08; \$15.00 at door  
Pre-register: 770-386-0576 ext. 400

Tellus  
Northwest Georgia  
Science Museum

100 Tellus Drive, White, GA

(Near Cartersville, GA. Exit 293 off I-75)

**Field Trip**  
**Saturday August 9, 2008**  
**Clio, Alabama**

**Fee Site**

**Collecting**, petrified wood, these are great pieces for display. Most have druzy quartz crystals and are very similar to the pieces from Brilliant although I have not seen the smoky quartz crystals found there. This site does offer some pieces with great color white with some red, blue and gray pieces. These pieces look very soft and you might think that they have to be stabilized before working them into cabs but I have found that is not the case and they polish into great cabs by just grinding them on a lap or genie.

**Fee**, There is no charge to visit this site but there is a **\$.25 (cent) per pound** fee for the material you wish to take with you.

**When**, Saturday August 9th, 2008. We meet at 12 Noon our time or 11AM Alabama time.

**Where**, We will meet just east of State Road 51 on the North side of State Road 10 at an open parking area on the side of an old brick building. You can not miss the building. It has wood headers between the rows of bricks on a couple of the lower layers.. From there we will caravan together to the site, which is just a short distance east of town.

**Collecting**, Colorful pieces of petrified wood. They have been cleared from the horse farm and been dumped in a small area under some trees. Cars can be parked very close to the site so there is very little walking making this very easy for children. Keep in mind they will have to be in close proximity of their parents at all times. Pets were allowed the last time I visited the site so I'm sure they will be allowed if on a leash.

**What to bring**, the only thing you need is a bucket to put your finds in. Keep in mind that some of the pieces are very large. You will not be able to lift them and if that is your collecting plan you might want to bring a 12 or 16 lb. sledge hammer You might consider a crack hammer and a chisel if you just want small pieces but if that is the case don't forget the paper to wrap them. You shouldn't need a shovel but some pieces may be buried. You won't need boots unless it is muddy but bug spray and drinks are always a good idea.

**Directions**, Take I-85 to exit 60 in Alabama. Take State Route 51 South .all the way to Clio. There are sections where Route 51 will join other roads and even a place near Union Springs that county road 47 becomes a short cut going straight south between a section of 51 that runs South West and then come back going South East. Map Quest said the trip would take 3 hours and 50 minuets. I may have just been lucky but I made it in 3 and 1/2 hours last time there.

Contact:

**George Libby**  
**Field Trip Chair**  
**@770-978-2117**

Or [Onsiteinatlanta@yahoo.com](mailto:Onsiteinatlanta@yahoo.com)

PS. At the time of this writing nothing has been set up but you might want to discuss possibly meeting at some location and car pooling with your friends to cut down on the gas costs which will most likely be the largest cost of this trip.

**The Southeast Federation of  
Mineralogical Societies, Inc**  
**DMC Program of the SFMS Field Trip Committee**  
**An Official Field Trip of the Henderson County Gem  
and Mineral Society (Hendersonville, NC) (HOST)**  
**An Official Field Trip of the GEORGIA MINERAL  
SOCIETY**

**9:00 a.m. until dark**  
**Saturday, August 16, 2008**  
**Crabtree Emerald Mine**  
**Grassy Creek Township, N.C.**  
**(Near Little Switzerland)**

**FEE AREA**

The Henderson County Gem and Mineral Society will be hosting a trip to the famous Crabtree Emerald Mine on August 16th, 2008. The dig will begin at 9:00 a.m. Saturday morning and continue until dark. The property managers (The M.A.G.M.A. Club) will have a backhoe on site turning over the dump piles to make collecting more productive for those who attend. All who attend will be required to fill out a liability release form upon arrival.

**Collecting**: Emeralds in matrix, emerald crystals, black tourmaline (schorl), garnet, golden beryl, green beryl, fluorite (rare).

**Cost**: \$30.00 per person, children 12 and under are free.

**Facilities**: There will be porta potties on site for the dig.

**Food**: bring food and plenty of water to drink.

**Tools**: Sledge hammers (small and large), 1/4" sifting screen, buckets, shovel.

**Directions**: From Interstate 26 West in Asheville, North Carolina, take Exit 9, Burnsville/Spruce Pine exit, (Hwy.US 19 North), turn right towards Spruce Pine. Drive 25.4 miles to Crabtree Road, turn right, drive 4.7 miles to McKinney Mine Road, turn left, drive 2.3 miles to Chestnut Grove Road, turn left, bear left around the church, drive 1.0 miles to Emerald Mine Road, this road will turn to Gravel, follow 1.2 miles to the mine on the left.

**Contact**: Rick Jacquot: [rick@wncrocks.com](mailto:rick@wncrocks.com)  
Rick Jacquot, 828-683-1048  
(Release form attached to this email)

-----  
"Field trips are open to all members of associated clubs of the DMC program of the SFMS Field Trip Committee and to all members of SFMS member clubs who have provided their membership with SFMS liability insurance. Because of insurance requirements, members of the GENERAL PUBLIC are NOT invited on this or any DMC program field trips!"

DMC Program / SFMS Field Trip committee's purpose:

To collect field trip information from it's member societies; schedule and coordinate field trip dates; disseminate field trip information to all member clubs so that each member society may publish this information as one of their "official" scheduled field trips.

**Crabtree Emerald Mine,  
Grassy Creek Township, North Carolina  
(Near Little Switzerland)**

**ACKNOWLEDGEMENT AND ASSUMPTION OF  
RISK AGREEMENT AND RELEASE OF LIABILITY**

**(To be filled-out by every person entering the property of the Crabtree Emerald Mine / Mineral City Mining Co., Inc.)**

**READ ALL SECTIONS.**

**THEN -- SIGN, DATE AND FILL-OUT CONTACT INFORMATION**

In consideration of being permitted access to the property of Mineral City Mining Co., Inc. / Crabtree Emerald Mine in Grassy Creek Township, North Carolina for the purpose of digging for rocks and crystals, the undersigned agrees to the following Waiver and Release and makes the following representations:

Acknowledgement and Assumption of Risk: I understand the risks associated with digging activities, inherent and otherwise, which include, but are in no way limited to, risks associated with falling into open pits or trenches, the collapse of excavations, equipment failure, negligent use of equipment, injuries from trips or falls. I understand and acknowledge that the mine owners, by granting permission to access the property, is in no way making any representation as to any visitor's physical ability to participate in digging activity. I have no known health problems or medical conditions which could in any way be exacerbated by the planned activity. I assume all health risks associated with such activity. I further understand the risks associated with general outdoor activity, and the hazards that may be presented by natural causes or acts of other persons or animals, whether negligent or intentional. I hereby acknowledge, confirm and agree that, at all times while on or about the Property, I am there at my own risk and will exercise the highest degree of care and caution for my own personal safety and the safety of others. I understand that the Mineral City Mining Co., Inc. / Crabtree Mine owners, by allowing third parties (any other visitors) on the Property, does in no way guarantee, make any representation or assume responsibility for any third party's character or conduct while on or about the Property. Release of Liability:

The Mineral City Mining Co., Inc. / Crabtree Mine owners, shall not be liable for any damages arising from personal injuries sustained by me on or about the Property. I agree to assume and bear all risks of injuries or damages to my person or personal property sustained while on or about the Property caused by any source whatsoever, whether by natural occurrence, my own acts or the acts of others. I hereby fully and forever release the Mineral City Mining Co., INC. / Crabtree Mine owners, agents, members, managers, successors and assigns as well as any other person or entity acting in any capacity on its behalf, from all claims, demands, damages, rights of action, or causes of action or liability for any such personal injury or property damage that I may incur. I further specifically agree to assume all risk of personal injury or property damage resulting from the negligence of Mineral City Mining Co., Inc. / Crabtree Mine, its owners, agents, members, managers, employees, and all other persons or entities acting in any capacity on its behalf. Indemnification: I hereby voluntarily release, forever discharge and agree to hold harmless and indemnify Mineral City Mining Co., Inc. / Crabtree Mine, its owners, agents, managers, members, successors or assigns and all other persons or entities acting in any capacity on its behalf, from any and all liability, claims, demands, actions, or rights of action, whether known or unknown, foreseen or unforeseen, relating to or arising out of my presence or activities while on or about the property. Lawful Activity: I agree to conduct myself in a lawful manner at all times while on the property, obeying all local, state and federal regulations and laws. Successors Bound: This Agreement and all representations made herein shall apply to and bind myself, my heirs, assigns and representatives. Severability: It is my intention that this Agreement be as broad and inclusive as permitted by law. In the event that any portion of this Agreement is determined to be invalid, such invalid portion shall be severed and the remaining provisions of the Agreement shall remain in full force and effect. Governing Law/Jurisdiction: This Agreement shall be construed in accordance with the laws of the State of North Carolina, and I agree to submit to the jurisdiction of the courts of the State of North Carolina.

Lawful Activity: I agree to conduct myself in a lawful manner at all times while on the property, obeying all local, state and federal regulations and laws. Successors Bound: This Agreement and all representations made herein shall apply to and bind myself, my heirs, assigns and representatives. Severability: It is my intention that this Agreement be as broad and inclusive as permitted by law. In the event that any portion of this Agreement is determined to be invalid, such invalid portion shall be severed and the remaining provisions of the Agreement shall remain in full force and effect. Governing Law/Jurisdiction: This Agreement shall be construed in accordance with the laws of the State of North Carolina, and I agree to submit to the jurisdiction of the courts of the State of North Carolina.

Date(s) of planned visit: \_\_\_\_\_

Signed: \_\_\_\_\_

Date: \_\_\_\_\_

Print Name: \_\_\_\_\_

If under 18 years old, must also be signed by visitor's parent or legal guardian: State child's age \_\_\_\_\_.

Parent or Legal Guardian: \_\_\_\_\_

Address: \_\_\_\_\_

City: \_\_\_\_\_ State: \_\_\_\_\_

Zip Code: \_\_\_\_\_

Phone(s): \_\_\_\_\_

Email: \_\_\_\_\_

## Southeastern Gem and Mineral Shows

**July 31-Aug 3--SPRUCE PINE, NORTH CAROLINA:** 51st annual show, "North Carolina Mineral and Gem Festival"; Mitchell County Chamber of Commerce; Pinebridge Coliseum, 97 Pinebridge Ave.; Thu. 10-6, Fri. 10-6, Sat. 10-6, Sun. 12:30-5; adults \$3, seniors \$1, children under 5 free; retail and wholesale vendors, exhibits, mine tours; contact Patti Jensen, P.O. Box 858, Spruce Pine, NC 28777, (828) 765-9033; e-mail: [pjensen@mitchell-county.com](mailto:pjensen@mitchell-county.com); Web site: [www.mitchell-county.com](http://www.mitchell-county.com)

**Aug 1-Aug 3-SAVANNAH, GEORGIA:** Show; AKS Gem Shows; Savannah International Trade & Convention Center, One International Dr.; Fri. 10-6, Sat. 10-6, Sun. 10-4; admission \$5; beading classes, cab demonstrations, Savannah Lapidary Club and SCAD promo booths; contact Kay Schabillon, 4532 Kawanee Ave., Metairie, LA 70006, (504) 455-6101; e-mail: [info@aksshow.com](mailto:info@aksshow.com); Web site: [www.aksshow.com](http://www.aksshow.com)

**Aug 8-Aug 10--DALTON, GEORGIA:** 17th annual show, "North Georgia Gem, Mineral & Jewelry Show"; Treasures Of The Earth Gem & Jewelry Shows; Northwest Georgia Trade & Convention Center, 2211 Dug Gap Battle Rd., I-75 exit 333; Fri. 2-7, Sat. 10-6, Sun. 11-5; adults \$3, children under 16 free; jewelry makers, goldsmiths and silversmiths from all over the U.S., gem trees, wire wrap, wire sculpture, pearls, stone beads, stone setting, amber, opal, mineral and fossil dealers, hourly door prizes, classes available; contact Van Wimmer, 5273 Bradshaw Rd., Salem, VA 24153, (540) 384-6047; e-mail: [van@toteshows.com](mailto:van@toteshows.com); Web site: [www.toteshows.com](http://www.toteshows.com)

**Aug 15-Aug 17--CARTERSVILLE, GEORGIA:** Southeast wholesale and retail show; Martin Zinn Expositions; Holiday Inn-Cartersville, I-75 and 411 NE; Fri. 10-6, Sat. 10-6, Sun. 10-5; free admission; minerals, fossils, gems, 90 vendors, wholesale and retail, public welcome, in cooperation with the Tellus Museum (formerly Weinman Mineral Museum); contact Laura Delano, P.O. Box 665, Bernalillo, NM 87004, (941) 408-0362; e-mail: [mz0955@aol.com](mailto:mz0955@aol.com); Web site: [www.mzexpos.com](http://www.mzexpos.com)

**Aug 29-Sept1-HENDERSONVILLE, NORTH CAROLINA:** 27th annual show, "Gem & Mineral Spectacular and Sale"; Henderson County Gem & Mineral Society; Whitmire's Activity Bldg., Lily Pond Rd.; Fri. 10-6, Sat. 10-6, Sun. 10-6, Mon. 10-5; adults \$3, children 12 and under free with adult; gems, minerals, fossils, jewelry, lapidary equipment and supplies, demonstrations, exhibits, programs, hourly door prizes, grand prizes; contact Margaret L. Johnson, P.O. Box 6391, Hendersonville, NC 28793-6391, (828) 692-1249

## Georgia State Park Events

### Gold Fever

Saturday, Aug 9, 2008 9 AM - 11 PM

[Smithgall Woods Conservation Area and Lodge](#) -Helen, GA  
Gold mining is a fascinating part of the history of Smithgall Woods. Hear more about the history of local gold mining, the geology of the area, see gold specimens, and watch a panning demonstration. Register in advance. \$3 parking. 706-878-3087.

### Flintknapping

Saturday, Aug 30, 2008 10 AM - 4 PM

[Etowah Indian Mounds Historic Site](#) - Cartersville, GA  
Flintknapping is the making of projectile points from different types of stone. See demonstrations of this ancient art. \$2.50-\$4. 770-387-3747.

## **Fernbank Museum of Natural History**

76 Clifton Rd. NE

Atlanta, GA

404.929.6300

For details on these exhibits, films, and events, please visit our website at

<http://www.fernbank.edu/museum/>

### **On Exhibit:**

***Ends of the Earth: From Polar Bears to Penguins***

***Penguins of the Antarctic: A Photographic Expedition***

Now on Permanent Display: ***Satilla River Dugout Canoe***



### **Upcoming Public Programs:**

**Sunday Snow Day** Family Activity Day. Sunday, August 10, Noon - 3 p.m. Free with membership or museum admission.

**Dinosaur Birthday Bash** Family Activity Day. Saturday, August 23, 10 a.m. – 2 p.m. Free with membership or museum admission.

### **Now Showing in IMAX:**

**(Check our website for special screenings)**

*Antarctica*

*Wild Ocean*

*Alaska: Spirit of the Wild* (Friday nights, 10 pm only, through August 29)

**Martinis and IMAX**, Friday evenings, 5:30 p.m. – 10 p.m.

# August 2008

Sun	Mbn	Tue	Wed	Thu	Fri	Sat
					<b>1</b> Spruce Pine Show 7/31-8/03	<b>2</b>
<b>3</b>	<b>4</b> GMS General Meeting	<b>5</b>	<b>6</b>	<b>7</b>	<b>8</b> Dalton Show 8/08-8/10	<b>9</b> Field Trip Clio, AL
<b>10</b> GMS Board Meeting	<b>11</b>	<b>12</b>	<b>13</b>	<b>14</b>	<b>15</b> Marty Zinn Show 8/15-8/17	<b>16</b> Mineralogy Symposium DMC Field Trip Crabtree NC
<b>17</b>	<b>18</b> Fossil Section Meeting	<b>19</b>	<b>20</b>	<b>21</b> Anita Preview Sale	<b>22</b>	<b>23</b>
<b>24</b> Anita Westlake's Auction	<b>25</b> Gem Section Meeting	<b>26</b>	<b>27</b>	<b>28</b>	<b>29</b> Hendersonville Show 8/29-9/01	<b>30</b>
<b>31</b>						

## A NEW SHOW FOR 2008!!

### SOUTHEAST GEM & MINERAL

**AUGUST 15 - 16 - 17, 2008**  
**HOLIDAY INN - CARTERSVILLE, GA**

● **45 Miles North of Atlanta . . . I-75 at EXIT 293**

● 65 Miles South of Chattanooga (see map on back)

● Next to the new Tellus Science Museum (formerly Weinman Mineral Museum)

**FREE PARKING ● FREE ADMISSION ● AIR CONDITIONED**

*Minerals, fossils, meteorites, gems & jewelry ~ Conducted in cooperation with the new Tellus Science Museum*

Martin Zinn Expositions, L.L.C. ● P.O. Box 665 ● Bernalillo, NM 87004 or Laura Delano ● lldandrfd@aol.com



**THE GEORGIA MINERAL SOCIETY, INC.**

P.O. Box 15011

Atlanta, Georgia 30333-5011

[www.gamineral.org](http://www.gamineral.org)

**MEMBERSHIP APPLICATION**

Name: \_\_\_\_\_ Birthday: month/day \_\_\_\_\_

Email: \_\_\_\_\_

Spouse: \_\_\_\_\_ Birthday: month/day \_\_\_\_\_

Spouse's email: \_\_\_\_\_

Children's Names & Birthdays: mo/day/yr (residing at home): \_\_\_\_\_

Address: \_\_\_\_\_

City: \_\_\_\_\_ State: \_\_\_\_\_ Zip+4: \_\_\_\_\_

Home Phone(s): \_\_\_\_\_ Cell Phone(s): \_\_\_\_\_ Office Phone(s): \_\_\_\_\_

Occupations: \_\_\_\_\_

Hobbies, Interests : \_\_\_\_\_

**SPECIAL INTEREST GROUPS AT GMS: (Check all that apply)**

Mineral Section

Micromount Section

Fossil Section

Junior Section

Gem Section

Electronic Newsletter

Dues for New Members (Single, Couple, Family) are \$25.00 per Society year. (\$20.00 + \$5.00 Initial Processing Fee)  
Renewal Dues are \$20.00 per Society year. (due 12 months from the date of joining and every 12 months thereafter)  
Reinstatement Dues (For Expired Membership) are \$25.00 (\$20.00 + \$5.00 Reinstatement Fee).

FAMILY MEMBERSHIPS ARE FOR THE IMMEDIATE FAMILY INCLUDING CHILDREN RESIDING WITH PARENTS.  
CHILDREN UNDER 18 YEARS OF AGE ARE CONSIDERED JUNIOR MEMBERS.

PLEASE MAKE CHECKS PAYABLE TO THE GEORGIA MINERAL SOCIETY, INC.

**THE GEORGIA MINERAL SOCIETY, INC.**

**P.O. BOX 15011**

**ATLANTA, GEORGIA 30333 - 5011**

**ADDRESS CORRECTION REQUESTED**

**PLEASE FORWARD**

**FIRST CLASS**

