

Tips *and* Trips



The Georgia Mineral Society

Atlanta, Georgia

Volume XXXVII/ Twelve December 2008



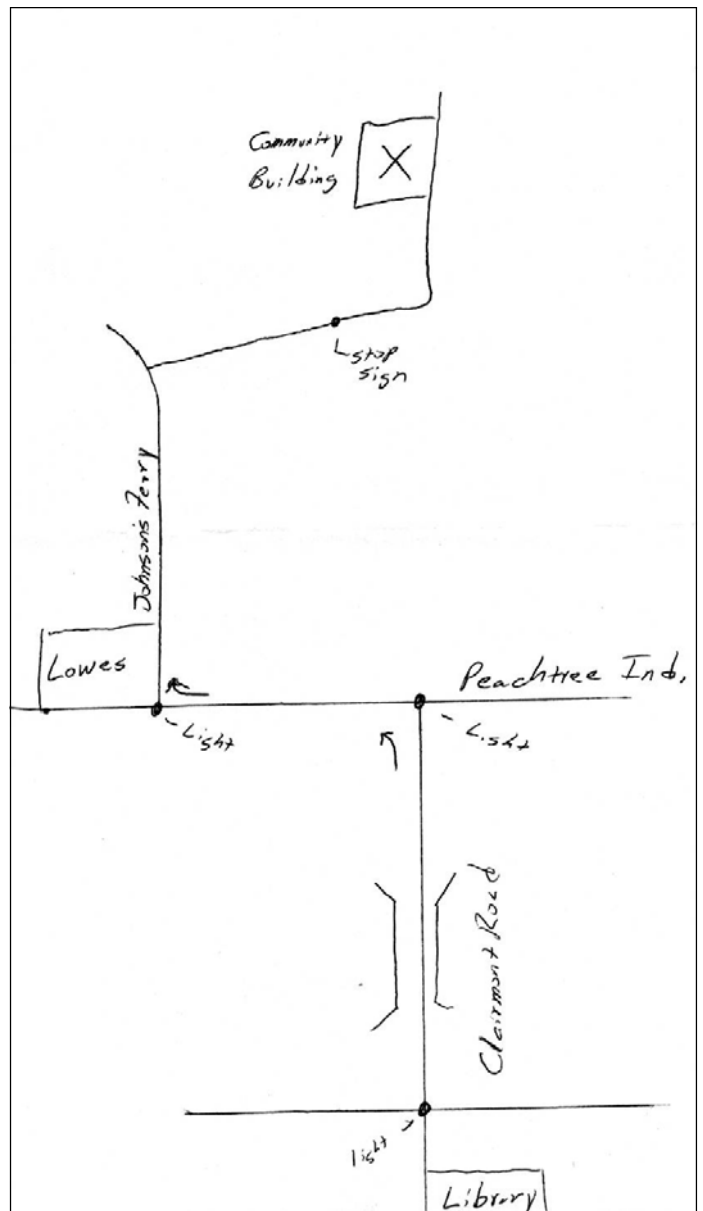
December Meeting and Christmas Party

Monday, December 1st, 2007
7:00 PM – 10:00 PM
Chamblee Community Building
3496 Keswick Drive
Chamblee, Georgia

We will begin with a short business meeting followed by the party. GMS will supply meat, drinks, and paper products. Bring your favorite entries, snack, or dessert. Alcohol will not be allowed. Following the meal we will give out gifts. Bring a gift that you would like to receive. Years ago we had a member who liked what he brought so much that he would usually pick up the gift. If you wish to receive a gift you need to bring a gift.

To get to the Community building follow Clairmont Road north past the library. Cross the bridge. Turn left at the deadend onto Peachtree Industrial Blvd. Go one light and turn right onto Johnson Ferry Road. Go past Lowes. Keswick Drive will be the first street on the right. Turn here. Go through the stop sign and sharp left curve. The Community building will be on the left.

Kim





The Georgia Mineral Society, Inc.
A Non-Profit Educational Organization
Seventy Years of Tradition
Objective and Purpose
To Educate the Youth of the State
and the Members of this Society
In the Field of Earth Science



AFMS Education - All American Club 2003

President

Bill Waggener
 1909 Moores Mill Road
 Atlanta, Georgia 30318
 404.355.7377
president@gamineral.org

Executive Vice President

Lizabeth McClain
 4000 Lindley Circle
 Powder Springs, GA 30127
 770.439.5756
membership@gamineral.org

Vice President

Carl Ziglin
 995 Laurel Mill Dr.
 Roswell, GA 30076
 770.998.5975
programs@gamineral.org

Secretary

Kim Cochran
 2695 Van Court
 Snellville, GA 30278
 770.979.8331

Treasurer

John Trimble
 3549 Davenport Lane NW
 Kennesaw, GA 30144
 770.425.5075
treasurer@gamineral.org

Gem Section Chair

Carl Ziglin
 995 Laurel Mill Dr.
 Roswell, GA 30076
 770.998.5975
gems@gamineral.org

Mineral Section Chair

Jay Gorday
 1690 Granger Ct
 Chamblee, GA 30341
 770.986.0822
minerals@gamineral.org

Fossil Section Chair

Martha Brown
 4837 Greenway Road
 Norcross, GA 30071
 770.448.0876
fossils@gamineral.org

Junior Section Chair

Roxanne Lopez
 1711 Donna Lynn Drive
 Smyrna, GA 30080
 770.436.0387
juniors@gamineral.org

Micromount Section Chair

Dave Babulski
 2677 Colony Circle
 Snellville, GA 30078
 678.580.2475
micromount@gamineral.org

Immediate Past President

Kim Cochran
 2695 Van Court
 Snellville, GA 30278
 770.979.8331

Trustee to 2009

Eva Ostrofsky
 1402 Arbor Lake Court
 Hoschton, GA 30548
 678-425-2573

Trustee to 2010

Marcella Wood
 3764 Briarcliff Road, NE
 Atlanta, GA 30345
 404-636-6102

Trustee to 2011

Anita Westlake
 1253 Spencer Drive
 East Point, GA 30344
 404.761.7849

Tips & Trips Editor

Tom Batcha
 2300 Oakland Chase ct
 Lawrenceville, GA 30044
 678-407-4224
newsletter@gamineral.org

Field Trip Chair

George Libby
 1730 Rhett Butler Dr.
 Lilburn, GA 30047
 770.978.2117
fieldtrips@gamineral.org

May Show Chair

Kim Cochran
 2695 Van Court
 Snellville, GA 30278
 770.979.8331

Webmaster

Jim Flora
 P.O. Box 605
 Hiawasse, GA 30546
 706.896.8040
webmaster@gamineral.org

Education Chair

Bill Waggener
 1909 Moores Mill Road
 Atlanta, Georgia 30318
 404.355.7377
education@gamineral.org

Committee Chairs

Adopt-A-Highway	Ginger Peterson	404.403.4855
Assets/Equipment	Barbara Libby	770.978.2117
Awards	Carl Ziglin	770.998.5975
Building	John Trimble	770.425.5075
Curator/Gem Box	Kim Cochran	770.979.8331
Facilities	Open to Volunteers	
Historian	Roxanne Lopez	770.436.0387
Hospitality	Margaret Ronan	404.636.0720
Librarian	Julian C. Gray	770.888.9331
Parliamentarian	Frank Decaminada	770-992-8309
Refreshments	Kim Prakash & Nancy Marden	770.879.0476 770.447.8542
Special Events	Kim Cochran	770.979.8331
Sunshine	Linda Batcha	678.407.4224
Telephone	George Libby	770.978.2117
SFMS Rep.	Anita Westlake	404.761.7849

The article submittal due date for the January 2009 newsletter is December 12, 2008.

GENERAL MEETINGS

General meetings are held on the first Monday of each month. In the event that the first Monday is a holiday and/or the facilities are not available, the meeting will be held on the third Monday of the month. General meetings are currently held at the Chamblee Branch of the DeKalb County Library System. Any deviations from the above schedule will be announced in Tips and Trips.

The Georgia Mineral Society on the Internet:
<http://www.gamineral.org>

E-mail Early Notification Program: A field trip and club news update service. To join, members are requested to send in their current e-mail address to:
gms@gamineral.org.

May Show Committee Chairs

Show Chair	Kim Cochran	770.979.8331
Dealer Chair	Anita Westlake	404.761.7849
Exhibits	Tom Batcha	678.407.4224
Demonstrations	John Trimble	770.425.5075
Hospitality	Richard Graveline	770.972.8714
Treasurer	John Trimble	770.425.5075
Advertising	Jay Gorday	770.986.0822
Dealer Dinner		
Database	Mary Porter	770.998.1018
Auction	Kim Cochran	770.979.8331
Set Up/Take Down	Jay Gorday	770.986.0822

December 2008

The Georgia Mineral Society

Georgia Mineral Society November General Meeting

The November 3rd meeting of the Georgia Mineral Society was called to order at 7:40 PM by Bill Waggener, President. There was one visitor and two new members with a total of 32 present.

Carl Ziglin introduced Dr. William Size of Emory University who presented an interesting program on Medical Geology. Dr. Size explained earth processes compared to physical processes in humans. Afterward Carl presented Dr. Size with a slab of picture sandstone from Arizona.

Lizabeth McClain stated that we have members

Carl Ziglin said that there will be no program for December as the Christmas Party will be held instead. The program for January will be announced later.

Roxanne Lopez made a motion to dispense with the minutes for the October meeting. The motion was seconded by Jay Gorday. The motion was carried.

John Trimble stated that our operating funds are \$31,043.

Carl Ziglin thanked Nancy Marden for hosting the October Gem Section meeting. The topic was 19th Century Hair Jewelry. The next meeting will be hosted by Lizabeth and Mickey McClain. The topic will be Malachite.

Jay Gorday stated that the November Mineral Section meeting will be held at his house. The topic will be Agate.

Martha Brown stated that the last Fossil Section meeting discussed the Precambrian. Kim Cochran will be hosting the next Fossil Section in February. The topic will be fossilization processes in wood.

Roxanne Lopez stated that there will be a Junior Section field trip to look at the geology of Cloudland Canyon.

There will be no Micromount Section meeting in December. The next meeting will be held in January.

Tom Batcha stated that there is two weeks left to submit articles for competition for the 2008 year. Irving Ostrofsky picked at his shirt. Awards received from the Southeast Federation will be given out in January. November 12 is the deadline for information to be submitted for Tips and Trips.

George Libby is keeping up with the field trips. He is welcome to continue as Field Trip Chair if he wishes. Last weekend was a field trip to the Hogg Mine near LaGrange. Upcoming trips will be in the December Tips and Trips.

Kim Cochran stated that we had a productive Show

Committee meeting. Grab bags are coming in. We will have a grab bag bucket at each meeting for members to donate material. Due to the increased cost and the fact that some of our grab bags are close to one pound in weight the cost of grab bags will go up to \$2.00 each at next year's gem show.

Kim also reported that the Christmas Party will be held on December 1st at the Chamblee Community Building. We can begin set up at 6:30. The party will be held from 7 – 10pm. GMS will supply meat, ice, drinks, and paper products. Members should bring food. No alcohol please. There will be a gift exchange. If you wish to receive a gift, bring a gift which is hobby related.

Jim Flora is doing a wonderful job with the web site. Bill encouraged all members to look at the web site and send corrections if needed.

Bill Waggener stated that he was at a workshop held the previous week in Paulding County on writings grants. We still have funds to give out for mini-grants. We will consider applications received after the deadline as long as we have funds. Roxanne Lopez mentioned that the June deadline causes problems for teachers as some of them will not know what they are teaching until August. Bill mentioned that the deadline is to motivate teachers to send in the applications. The matter will be discussed at the upcoming Executive Board Meeting.

Carl Ziglin stated that there will be awards next year. John Trimble has been looking at property in office park areas. He is making a list of sites and will ask the membership to check out those sites. Builders and developers are getting desperate to sell Properties. Many of the sites are near Roswell. Carl Ziglin liked the idea of GMS moving to Roswell. Margaret Ronan mentioned that Happy Herman's on Cheshire Bridge Road is for sale. That property is in a high rent area.

Kim Cochran explained that the Gem Box. The bead portion will be at the next Mineral Section meeting.

Margaret Ronan will continue to handle hospitality at the meetings. Bill thanked everyone for bringing door prizes.

Julian Gray is looking for a home for our library. We have discussed the library with Tellus.

Nancy Marden thanked John Trimble, Richard Graveline, and Eva Ostrofsky or bringing refreshments.

Linda Batcha has volunteered to take over Sunshine Chair.

Anita Westlake, our representative with the Southeast Federation, announced that the annual meeting will be held in Nashville next month.

(continued page 6)

President's Message

Greetings to all: We have had an exhilarating and frightening 2008. We are watching our investments' value fluctuate up and down. We have a new President-Elect. We are watching the government spend our money, our children's money, and our grandchildren's money... and hoping the expense is for our greater good. Through it all, the fossils, rocks and minerals that we so love continue to exist and be mostly available for collecting and appreciating.

One of the best aspects of our hobby to me is that, no matter how bad things get, I can go out to see the wonders of our physical world. Whether I go to a new place, an old favorite, my classroom or simply my backyard, the rocks tell a story that doesn't care about the economy or who is President. Rather than escaping from reality, I am reminded of the true reality. We humans are brief visitors on the planet. Despite all our problems and influence, Earth has been around for billions of years and will continue (probably) for billions of years after we are gone.

Our problems are ours to create and ours to solve. The causes and results come from US and affect US. The Earth may appear to wince or laugh or cry, but all these emotions are HUMAN: Only we know what they are. Only we know what they mean. Only we care about them. Our actions affect the environment around us and may have long lasting influences. But in 250 million years, when the continents get back together, I question if that future world will remember much about humans in 2008.

To sum up and close, please remember that your economical, political, and environmental decisions and actions will affect us now and in the near future. We must take care of our children and grandchildren. We must care for our families. We must care for our neighborhoods and our neighbors. Any major adverse results of our actions will be to degrade OUR living conditions. If we wish to survive as long as possible, we must take care of our own nest. The Earth will heal and continue without us.

Let us have a happy, healthy, prosperous 2009 for all!

Respectfully submitted,
Bill Waggener



Membership

The following are new to membership in Georgia Mineral Society: Ardis, Jeff, and Taylor Cecil of Prattville, AL; Andrew James and Wendy Free of Suwanee, GA; Ann Kelley of Ladson, SC; and James and Elizabeth Raby and Clint Painter of Lithia Springs, GA. Please make them feel welcome when you meet them!

Everyone is doing a good job getting those renewals in on a timely basis; but, even better, folks are remembering to let me know any e-mail or address changes. Let's keep it up! You may e-mail me at mgm5258@netzero.net or call me at 770-439-5756.

Happy rockhounding!

Lizabeth McClain
Executive Vice President



May Show

Preparations have begun. The floor plan is being drawn. Soon dealer contracts will go out. Grab bags are being sewn. We have a good number already but still need many more to reach 1000. We need filler material. Each year I buy colorful pieces but it takes much more than that to fill the bags. Each month I will have a bucket at the meetings. **Please bring material that you have collected and fill the bucket.** I know that it is just December but show time will be here in the blink of an eye.

Kim

December Education Report

GMS members continue to spread their knowledge of the earth sciences. Kim Cochran talked to Northwest Ga G&MS on Hazardous to your Health, Cotton Indian G&MS Club on Hazardous to your Health, Dothan G&MS on Minerals of Georgia, and Aiken G&MS on Plate Tectonics.

Mickey McClain and Roxanne Lopez both can use support in their classrooms. Please ask them what would be most helpful.

Holly Camp Earth Science Education Minigrant 2008/2009 applications are still being accepted. The applications for 2009-2010 will be available around Christmas 2008. Please encourage all Earth Science, Earth Systems and elementary teachers that you know to apply for the \$300 Minigrants.

We have received the MiniGrant report from Roxanne Atrchin-Lopez for 2007-2008. Thanks for the report, Roxanne. The complete report will be in the next T&T.

Please let me know who is sharing their rock and fossil knowledge. Everyone has some unique tidbits that students love to share. It is encouraging to others to see that we are welcomed and well-received by clubs and teachers over the state.

Respectfully submitted,
Bill Waggener, Education Chair

Gem Section

**Friends, Romans, Rockhounds,
Lend me your Photos!**

There will be no gem section meeting in December. Please join us again in January of next year.

Answer to last month's Gem Section Trivia:

How did tourmaline get its name?

From the Cingalese "tourmali," the name given to colored gem zircons on the island of Sri Lanka (Ceylon). In the early 1800s it was discovered that some of the "zircons" arriving in European gem centers from the far east were actually a previously undescribed mineral.

Thanks to mindat.org for this information.

Gem Section Trivia:

Is Evening Emerald a beryl?

Thanks to Mickey and Lizabeth McClain for hosting the November meeting!!

We're looking for hosts for some of next year's gem section meetings. Please let me know if you're interested.

Carl Ziglin,
Gem Section Chair
gems@gaminal.org



I'm attempting to put together a computer slide show about GMS. One use for this presentation may be to help explain what a great group we are and why folks should become members. Our May show is one place this might be used.

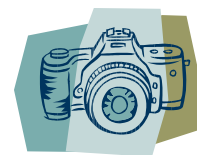
To create this presentation, I need to borrow your photos of GMS activities, field trips, finds, etc. Please let me copy the most interesting of your prints, slides and negatives. I would like to highlight the most fun aspects of GMS, particularly those involving juniors. If you have older photos I would also like to capture images of members from 'yestermillennium'.

Let me know if you have any ideas or suggestions about what should be included in the presentation.

If you have images already on computer disk, all the better (less work for me . . .).

Thanks!

Carl
programs@gaminal.org

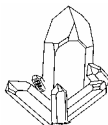


Mineral Section

I would like to thank everyone who came to our house for the November Mineral Section Meeting. We had a good crowd show up for the meeting. The topic for the evening was *Agates*. If you missed the meeting, you missed a lot of good information and interesting specimens. Thanks to everyone who brought specimens to show off.

Our next meeting will be in January. The details will be in the January newsletter. I hope to see you at the meeting.

Jay Gorday
GMS Mineral Section Chair



Junior Section

December Junior Section
There will be no meeting
Come for the general meeting party
January's trip will be to the Tellus Museum
Date to be announced in January's T&T

Roxanne Lopez
Junior Chair

Fossil Section News

As the end of the year comes , I would like to thank Kim Cochran, Anita Westlake and Carl Ziglin for taking their time and giving programs at the Fossil Section. We studied great specimens and learned new things.

Thank you also to the members who took the time to join us. In the new year we will discuss fossilization, cleaning fossils, and find new things to talk about .

We will not have a meeting in December or January. The next meeting will be in February, 2009.

Thank you, Martha

Thank you. Martha S. Brown - 770/448-0876
www.wlbjouva@aol.com

Micromount Section

The next micromount section meeting will be Thursday January 15 at 7:00pm at Brookwood High School. Please RSVP if you plan to attend. The meeting place may be subject to change.

David Babulski
770-979-8331



Meeting Minutes (continued from page 3)

This is the same weekend as the at the North Atlanta Trade Center. Anita is managing that show and will not be available to attend the meeting in Nashville. GMS will have a table at the trade center show. We will need help to man it. There is a coupon in Tips and Trips giving free admission into the show. The Cobb County Gem and Mineral Society will be having their show on the 21st thru 23rd of November at the Cobb County Civic Center.

John Trimble mentioned that on November 8th Tellus will be having an open house for members of Cobb, Rome, and GMS. These clubs have contributed to the Founder's Circle. Registration will be at 9:30. The open house will be from 10:00am until noon. RSVP. Tellus will open January 12, 2009.

The Executive Board will hold a meeting at John Trimble's house at 1:00pm on November 16th. Lunch will be served at noon. RSVP.

Frank Decaminada stated the American Federation has awarded GMS with four awards. These will be announced at the Southeast Federation meeting in Nashville.

GMS has received a thank you note from George Libby in the loss of Barbara.

Carolyn Daniel is chairing the Fossil Science Olympiad at Woodstock High School on February 28th. She needs one more person to help. Anita Westlake chewed her gum. The

State Science Olympiad will soon be contacting us in regard to competition next spring. Roxanne stated that the Elementary Olympiad will be held a week after our show.

Bill Waggener asked if anyone had spoken to groups.

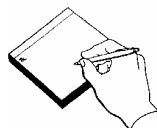
Carl Ziglin is putting together a promotional slide show for GMS. He needs snapshots to scan. Bill suggested that the scrapbook which we submitted to the Federation may be of help. John Trimble is working on a series of posters in regard to the education of children. We can show what GMS does towards education. He will need images also.

Bill Waggener announced that a short meeting of the Executive Board will take place after the meeting.

Margaret gave out door prizes.

Anita Westlake made a motion to adjourn. The motion was seconded by Doug Daniel. The meeting was adjourned at 9:20pm.

Respectfully submitted,
Kim B. Cochran, Recording Secretary



DECEMBER BIRTHDAYS

- 12/1 Jean Marie Herbert
- 12/1 Oscar Hill
- 12/1 Dorothy Kraft
- 12/6 Miranda Gore
- 12/6 George Lamb
- 12/9 Leslie Gulley
- 12/9 Dion Stewart
- 12/11 John Endress
- 12/11 Madeline Hill
- 12/11 Clay Wilhoite
- 12/12 Mildred Roberts
- 12/13 Grace Watford
- 12/14 Dalton Kane
- 12/16 Maria Buznego
- 12/17 Ravi Sekhar Mungara
- 12/17 Fred Rodes
- 12/17 Celesta Waggener
- 12/19 Craig Hood
- 12/19 Dodie Parker
- 12/19 Will Reid
- 12/23 Wyatt Johnson
- 12/23 Robert McDivitt
- 12/24 Bonney Weathers
- 12/25 Indu Kowalski
- 12/25 Natalie Morgan
- 12/25 Nianne Mullis
- 12/26 Ben Bentkowski
- 12/26 Jim Huggins
- 12/28 Al Klatt
- 12/28 Damon Woodson
- 12/29 Beverly Jarvis
- 12/29 William Nowers
- 12/30 Mary Ann Tiedemann
- 12/30 Lauren Woodbury
- 12/31 Russell Love



DECEMBER ANNIVERSARIES

- 12/6 Cheryl and Shannon Martin
- 12/20 Rebecca and Joe Chunn



Mineral Sale

Marcella Wood has moved and is having to sale some of her collection. The sale will occur at her old residence on Briarcliff Road near Clairmont. Call Marcella if you would be interested in attending the sale and she will set up a date once she gets an idea of how many people are interested.

Items will include boxes of Mexican rock and various specimens from club field trips. Some are large size boulders. All items will be priced modestly.

Marcella Wood

404-294-8400

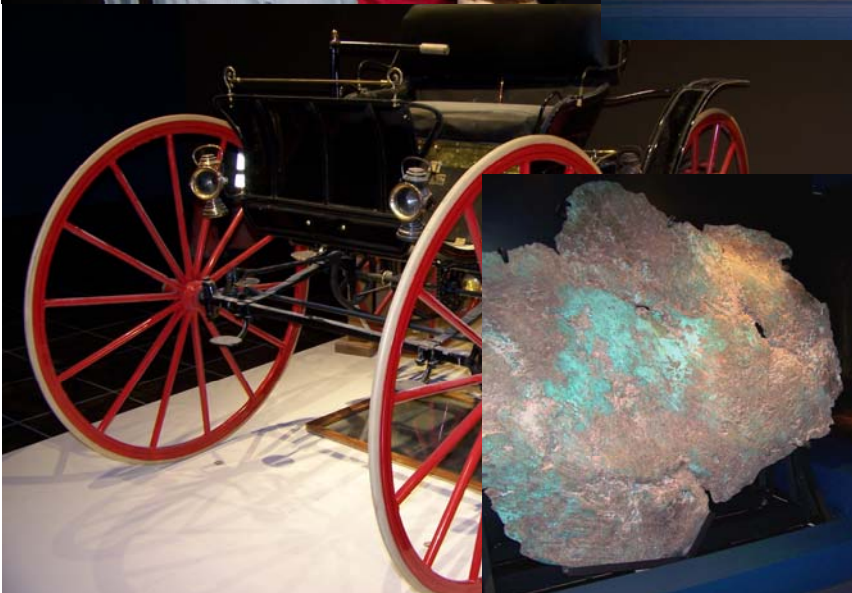
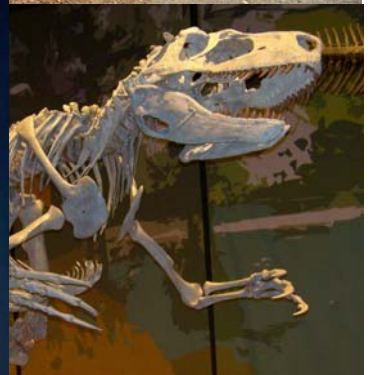
Mineral Club Preview Tour of Tellus

Saturday, November 8, 2008

Our Thanks
to
Jose Santamaria
and
the Staff of
Tellus: Northwest Georgia Science Museum

Photos in clockwise rotation:

1. Tellus exterior and grounds
 2. Appalachiosaurus (a.k.a. Bubba-saurus)
 3. Xiphactinus (see October 08 Tips & Trips)
 4. Copper Float from Minnesota
 5. Antique car in the Transportation Gallery
 6. Megalodon Jaw (9 feet wide)
 7. Giant amethyst geode (Brazil)
- (Photographs by Tom Batcha)*



New AFMS Webmaster Competition

Jim Flora, SFMS Webmaster

Great news!!! We have a fantastic new competition to announce!!!

In order to recognize the hard work of our club webmasters and the importance of having a website for your club, the AFMS has approved a new competition for club websites.

Through the diligent work of Phyllis George, chairperson for the AFMS Webmaster Competition committee, we're a go for 2009. We're running it concurrently with the regional Bulletin Editors Contest Newsletter competitions and are using the same deadlines so, for the SFMS, entries are due to me by January 15th, 2009, the deadline for the SFMS BEAC Competition. Please have all entries in by that date. Sorry for the short notice this year but sometimes it takes a while to get everyone's approval and we didn't want to wait another year to start.

Preferred method for entries is to send me your entry via e-mail at sfms@amfed.org or jimflora@alltel.net but you may also mail entries to me at Jim Flora, POB 605, Hiawassee, GA 30546.

Forms and additional details are available at: <http://www.amfed.org/sfms/webmaster-contest.html>
- the webpage for the new SFMS level website competition.

To give you a little history, the South Central Federation of Mineral Societies (SCFMS) recognized the importance of websites to clubs and started a regional competition in 2005. The goal is to both recognize the work of club webmasters and to make suggestions as to how club websites can be improved to better serve their clubs and help the clubs grow.

Judging will be at both the regional level and AFMS level, as with the BEAC Newsletter competition. At the regional level, a first place plaque will be awarded as well as certificates for 2nd through 10th and honorable mentions. The first place entry from each region will be forwarded to the AFMS competition for judging at that level. Awards at the regional level will be at the Editor's Breakfast for each federation as part of the BEAC Awards. The AFMS winners will be announced at the NFMS/AFMS Bulletin Editors' Breakfast in Billings, Montana August 1, 2009.

I need your help. Would you please make sure your club webmaster knows about this new competition and encourage him or her to enter? If you wish, send me your webmaster's e-mail and I'll send an e-mail with information and links on the competition. There's still time to download the judging score sheets and follow the scoring sheet to do

some last minute tweaking before judging begins after the January 15th deadline. I encourage everyone to enter!!!

Thank you all for your time and help, and I look forward to your entries.

Jim Flora
SFMS Webmaster and Field Trip Chair
706-896-8040 770-883-4493 Cell
Internet website: <http://amfed.org/sfms>
E-Mail jimflora@alltel.net



ATLANTA CIVIC CENTER

NORTHERN TRUST PRESENTS

King Tut Exhibit

11/15/2008 - 5/25/2009
Tickets: \$16.50 - \$32.50
Group Sales 1-866-524-7687

[Visit Website - http://www.kingtut.org](http://www.kingtut.org)

Atlanta Civic Center
395 Piedmont Avenue, NE
Atlanta, GA 30309

404-523-6275 phone
404-525-4634 fax

<http://www.atlantaciviccenter.com/index.asp>

Sunshine News

They say no news is good news and I hope that is true. We have not received any announcements from club members this month. Please send in your announcements to me so that we can share them with other club members.

Thanks and God Bless,

Linda Batcha
L.Batch@comcast.net



THE MICROMOUNT CORNER

LIBETHENITE REVISITED

Dr. David Babulski

Chair, Georgia Mineral Society Micromount Section

Hello everyone. I am taking a break from the microscope to share some new specimens of a pretty green mineral called Libethenite. This mineral is a copper phosphate hydroxide with the chemical formula of $\text{Cu}_2(\text{PO}_4)(\text{OH})$. Occurring as a secondary copper phosphate, Libethenite forms in the oxidized portion of a primary copper deposit. The phosphate usually originates from the alteration of apatite or other rock-forming phosphates such as monazite or xenotime. The mineral is named for its type locality, the village of Libethen in the Slovak Republic. Although usually fairly rare, some new specimen material from the Congo in Africa and the large copper mines in Arizona has resulted in a flood of new micromount specimens of Libethenite. It is anyone's guess how long this availability of specimen material will last. Libethenite crystallizes in the Orthorhombic Dipyramidal class with pronounced 2m 2m 2m crystal symmetry. Libethenite is iso-structural with Olivenite and Adamite; this means that they all share the same crystal symmetry and crystal shapes. Most specimens show squat pseudo octahedral "diamond" shaped crystals in a characteristic pine green color. Some specimens from mines in Chile and Arizona show a different acicular crystal habit. Shown below are photomicrographs of Libethenite from several localities. All photomicrographs are at a magnification of 20X and Kodak ASA 400 color print film. Most are four second exposures.

Until next time, may all your skies be blue and all your vugs filled with crystals.



Figure 1 – Libethenite from the Musonoi Mine, Kolwezi, Congo



Figure 2 – Libethenite from the Mammoth open pit copper mine in Arizona



Figure 3 - Libethenite from the Ray Mine, Pinal County, Arizona



Figure 4 – Libethenite from the Ray Mine, Pinal County, Arizona

References: www.webmineral.com
<http://mineral.galleries/phosphate/libethen/libethenite.htm>

Ford, W.E., *Dana's Textbook of Mineralogy*, 4th Ed. 1932, John Wiley and Sons, New York Page 714

Brush, G; Penfield, S, *Determinative Mineralogy and Blowpipe Analysis*, 16th Ed 1926, John Wiley and Sons, New York, Pg. 265



Florida Fossil Permit

FLORIDA STATUTE § [1004.57](#) sets forth the State of Florida's declared intent to protect and preserve vertebrate fossils and vertebrate paleontology sites. All vertebrate fossils found on lands owned or leased by the state belong to the state with title to the fossils vested in the Florida Museum of Natural History for the purposes of administration. Field collection of vertebrate fossils may be conducted under the authority of a permit issued by the Program of Vertebrate Paleontology in accordance with FS § [1004.575](#) and the University of Florida RULE 6C1-7.541 F.A.C. The purpose of the fossil collecting permit is not only to manage this non-renewable part of Florida's heritage, but to help paleontologists learn more about the range and distribution of the state's fossil animals.

WHAT AREAS ARE COVERED?

The state intends to encourage preservation of its heritage wherever vertebrate fossils are discovered; the state encourages all persons having knowledge of such fossils to notify the Program of Vertebrate Paleontology at the Florida Museum of Natural History. A permit is required for most collecting activities on all lands owned or leased by the state. This includes sites located either on submerged lands or uplands. Please note that existing regulations prohibit collecting in state parks and certain other managed areas. Check the regulations to see if your activities are covered. Fossil collecting on private land does not require a permit (but you will need the permission of the land owner or manager to enter, collect on, and retain fossils from private property). Having a permit does not give you the right to collect fossils on private property without the permission of the land owner.

WHAT OBJECTS ARE COVERED?

It is Florida's public policy to protect and preserve vertebrate fossils, including bones, teeth, natural casts, molds, impressions, and other remains of prehistoric vertebrate animals. Fossil sharks teeth are specifically excluded from these regulations, as are the fossils of plants, invertebrate animals (e.g., mollusks, sea urchins, crabs, etc.), and other organisms, so no permit is required to collect such specimens. A permit is required to collect

fossils of all other kinds of vertebrates, namely fish (except sharks teeth), amphibians, reptiles, birds, and mammals.

WHO MAY OBTAIN A PERMIT?

Any person with an interest in Florida vertebrate fossils may apply for a permit. These regulations apply to both residents and non-residents of Florida. Minors can apply for permits, but may also collect with a permit-carrying adult parent or guardian who assumes all responsibilities and obligations for the collected specimens.

WHO MUST OBTAIN A PERMIT?

- Any person or entity buying, selling or trading vertebrate fossils found on or under state-owned or leased land; and/or
- Any person or entity engaged in the systematic collection, acquisition, or restoration of vertebrate fossils found on state-owned or leased land.

"Systematic collection" is hereby characterized by one or more of the following three features:

1. volume of collections of vertebrate fossils in excess of one gallon at one site;
2. use of any power-driven machinery or mechanical excavating tools of any size or hand tools greater than two (2) feet in length;
3. the collection, acquisition, excavation, salvage, exhumation or restoration of vertebrate fossils at a site on more than three days or a maximum of twenty-four hours during a period of one year.

HOW IS A PERMIT OBTAINED?

Any person wishing to engage in field collection of vertebrate fossils on land owned or leased by the state of Florida should apply for a permit by printing out and completing [an application form](#) and mailing it to the FLORIDA PROGRAM OF VERTEBRATE PALEONTOLOGY, Florida Museum of Natural History, University of Florida, Gainesville, Florida 32611-7800, USA.

The application must be accompanied by a self-identification document such as a photocopy of the applicant's birth certificate, driver's license, or passport, and a check or money order for \$5.00 US made payable to the PROGRAM OF VERTEBRATE PALEONTOLOGY. A permit shall be issued for one year. A multiple-user permit will be granted to an individual representing an organization or institution. Multiple-user permits are not intended for collective use by separate adult members of a family or household; they should each apply for their own permits.

WHAT OBLIGATIONS DOES A PERMIT CARRY?

As a permit holder you can help unlock the secrets of Florida's fossil heritage and preserve this knowledge for future generations. Each year permittees add new discoveries to Florida's fossil heritage. The holder of a permit must report any unusual specimen or unusually rich site to the PROGRAM OF VERTEBRATE PALEONTOLOGY as soon as possible. At any convenient time, no later than the end of the permit year, the permit holder shall submit to the PROGRAM OF VERTEBRATE PALEONTOLOGY a list of all vertebrate fossils collected during the permit year along with appropriate locality information; or the actual collections with appropriate locality information. If within sixty (60) days of receipt of the list or the actual collection the PROGRAM OF VERTEBRATE PALEONTOLOGY does not request the permittee to donate one or more of the fossils collected, they may be released as 'non-essential fossils' to be disposed of however the permit holder may choose.

If you already have a fossil permit, you should [renew](#) it about three to four weeks before the expiration date to ensure that you receive your new card before the old one expires. Unless you indicate otherwise, the starting date for the renewed permit will be one day after your current permit expires.

Questions about Florida Program of Vertebrate Paleontology may be directed to:

Richard Hulbert
Program of Vertebrate Paleontology
Florida Museum of Natural History
University of Florida
Gainesville, Florida 32611
Tel: (352) 273-1821
E-mail: rhulbert@flmnh.ufl.edu

TO APPLY FOR A FOSSIL PERMIT

<http://www.flmnh.ufl.edu/vertpaleo/permitapplication.htm>

TO RENEW YOUR PERMIT FOR ANOTHER YEAR

<http://www.flmnh.ufl.edu/vertpaleo/renewpermit.htm>

up-dated May 29, 2008

Sources:

<http://www.amfed.org/sfms/>

<http://www.flmnh.ufl.edu/vertpaleo/vppermit.htm>

Florida Statute 1004.57

1004.57 Vertebrate paleontological sites and remains; legislative intent and state policy.--

(1) It is the declared intention of the Legislature that vertebrate paleontological sites be protected and preserved and that, pursuant thereto, vertebrate paleontological field investigation activities, including, but not limited to, collection, excavation, salvage, restoration, and cataloging of fossils, be discouraged except when such activities are carried on in accordance with both the provisions and the spirit of this act. However, it is not the intention of the Legislature that the provisions of this act impede mining or quarrying for rock, gravel, fill, phosphate, and other minerals, or the construction of canals or similar excavations, when such activities are permitted by law. Rather, it is the intent of the Legislature that mine and heavy equipment operators be encouraged to cooperate with the state in preserving its vertebrate paleontological heritage and vertebrate fossils by notifying the Florida Museum of Natural History whenever vertebrate fossils are discovered during mining or digging operations and by allowing such fossils to be properly salvaged and that persons having knowledge of vertebrate paleontological sites be encouraged to communicate such information to the museum.

(2) It is hereby declared to be the public policy of this state to protect and preserve vertebrate paleontological sites containing vertebrate fossils, including bones, teeth, natural casts, molds, impressions, and other remains of prehistoric fauna, and to provide for the collection, acquisition, and study of the vertebrate fossils of the state which offer documentation of the diversity of life on this planet.

(3) It is further declared to be the public policy of the state that all vertebrate fossils found on state-owned lands, including submerged lands and uplands, belong to the state with title to the fossils vested in the Florida Museum of Natural History for the purpose of administration of this section and ss. [1004.575-1004.577](#).

Source:

<http://www.flmnh.ufl.edu/vertpaleo/FS1004.57.htm>

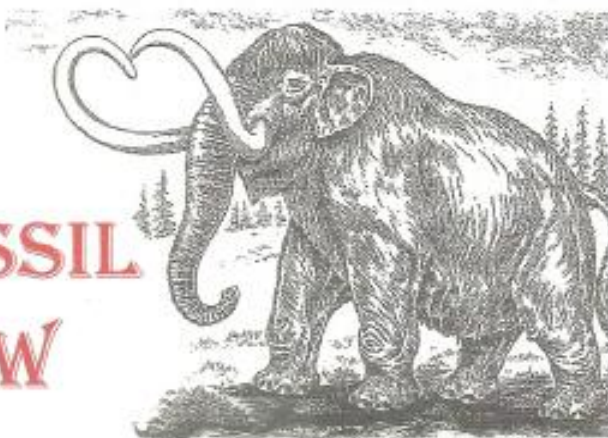
There are three additional statutes that cover the collection of fossils on state land in Florida. For more information reference the following sites:

<http://www.flmnh.ufl.edu/vertpaleo/FS1004.575.htm>

<http://www.flmnh.ufl.edu/vertpaleo/FS1004.576.htm>

<http://www.flmnh.ufl.edu/vertpaleo/FS1004.577.htm>

NORTH ATLANTA GEM, MINERAL, FOSSIL AND JEWELRY SHOW



**TWO
BIG
DAYS
SAT
& SUN**

DECEMBER 13 - 14, 2008 SATURDAY 9-6, SUNDAY 10-5
NORTH ATLANTA TRADE CENTER - NORCROSS GA
 (I-85 North from Atlanta, Exit 101 Right on Indian Trail, then
 right at second light)

THE LARGEST RETAIL SHOW IN GEORGIA
**** FEATURING ****

- *free admission for all club members**
- *The famous Rock Table exhibit**
- * Two grand door prizes worth over \$1000**
- \$25 gift certificates awarded each hour**

***For more information, visit:**
WWW.MAMMOTHROCK.COM

- *Admission \$3 for Adults**
- *Children under 16 with adults admitted FREE**
- *Free Parking**

Bring your friends,
 neighbors, coworkers,
 strangers on the street,
 school buddies, anybody
 you can think of that has
 never been to one of these
 events .

Not only will they thank you
 for it, they might want to
 join one of our clubs.
 Help keep our clubs Growing!

45+ Dealers With Fossils, Minerals, Gemstones, Gold, Silver, Meteorites,
 Stone Carvings, Beads, Pearls, Jewelry, Antiquities, Collectables.

A Unique Shopping Opportunity to Purchase One-of-a-Kind Items
 & Gifts Not to be Found in Any Other Shopping Venue!

A Shopping Experience Like None Other
 Two Grand Door Prizes To Be Awarded
 Authentic Dinosaur Egg
 Mandarin Garnet Ring

DECEMBER 13th - 14th
SATURDAY 9AM - 6PM
SUNDAY 10AM - 5 PM

I-85 Exit #101

Admission:



Adults - \$3.00

Children under 16 free with an adult

FREE PARKING

Mammothrock Shows
 7334 Quail Run Road
 Lizella, GA 31052
 1-800-720-9624

Mammoth Rock Shows
FREE ADMISSION

 This card is your door prize entry, so please
 bring it with you! 

December 2008

The Georgia Mineral Society

The Southeast Federation of Mineralogical Societies, Inc

DMC Program of the SFMS Field Trip Committee
An Official Field Trip of Georgia Mineral Society

DECEMBER FIELD TRIP
JACKSON'S CROSSROADS AMETHYST MINE

FEE SITE

Saturday – 9:00 AM, December 6, 2008

WHERE: The Famous Jackson's Crossroads Amethyst Mine

WHEN: 9 am, Saturday – December 6, 2008

COLLECTING: Amethyst and quartz crystals and clusters. Some in matrix. Some crystals at this site are facetable. I understand that at one point Tiffany had mined the area for gems.

FEE: The owners have reduced their normal fee and for this official field trip they are reducing it to only \$15.00 a person

DIRECTIONS: Jackson's Crossroads is South of I-85 (Take 17 S) North of I-20 (44 N), West of Washington (78 W) and East of Athens. (78 E) My last trip here I traveled East from Athens on US 78 through the town of Lexington and through Rayle. Just as you leave Rayle town limits you come to Callaway Rd. This goes north and you can not miss it. There is a pull off at the corner and signs for the Callaway Farm on one side and the Double B Farm on the other with cows painted on them. Callaway Rd is a two lane road as you go north. At one point it looks like the road stops at a house. I believe it continues as a one lane road after this point. It doesn't matter as you make a right turn in front of the house. This is a continuation of the two lane road but is Clark Station Church Road and is listed as CR106. You continue down this road for 1&2/10 miles. You come to a cemetery on the left and the Clark Station Baptist Church on the right. On the left is Hollis Norman Rd. This is a dirt road but know as CR107. Make your left on this dirt road. 500 feet down the road you come to double iron gates on the right. You pass this and go another 200 feet down the road to the entrance of the mine also on the right. It took me just over two hours to make this trip but keep in mind that I live on the East side of Atlanta.

WHAT TO BRING: We will not be allowed in the pit area but fresh material is being brought up and we will be allowed to sift through the spoil dumps and the mine operators assure me that there will be many exposed boulders and you can bring your sledges. If this is your thought bring safety glasses as well as a hard hat and boots and gloves. If you just want to look through the dumps you will need a screen or something to sift the soil and a spade or shovel. Wear layers of clothes as it may be cold in the morning but could warm up later in the day. Bring something to drink and of course something to wrap your finds in.

Children under 12 are **not permitted** at this site. Seems something happened here where they were out of sight of their parents so lack of control led to the mine owners taking control. Pets on a leash are allowed or at least until someone lets them roam free.

CONTACT:

George Libby Field Trip Chair

Phone 770-978-2117

Cell 678-910-7476

E-mail Onsiteatlanta@yahoo.com

"Field trips are open to all members of associated clubs of the DMC program of the SFMS Field Trip Committee and to all members of SFMS member clubs who have provided their membership with SFMS liability insurance. Because of insurance requirements, members of the GENERAL PUBLIC are NOT invited on this or any DMC program field trips!"

DMC Program / SFMS Field Trip committee's purpose: To collect field trip information from it's member societies; schedule and coordinate field trip dates; disseminate field trip information to all member clubs so that each member society may publish this information as one of their "official" scheduled field trips.

Fernbank Museum of Natural History

76 Clifton Rd. NE

Atlanta, GA

404.929.6300

For details on these exhibits, films, and events, please visit our website at

<http://www.fernbank.edu/museum/>

On Exhibit:

Ends of the Earth: from Polar Bears to Penguins

Penguins of the Antarctic: A Photographic Expedition



Upcoming Public Programs:

In My World-Migration and Hibernation. Wednesday, December 3, 11 a.m. Tickets are \$10 per child in addition to Museum admission.

Annual Family Holiday Event. Sunday, December 7. Noon - 5 p.m. Enjoy a winter wonderland inspired by Fernbank's special exhibit. Included with Museum membership or admission.

Storytelling. Saturday, December 13, Noon. Included with Museum membership or admission.

Sunday Snow Day. Sunday, December 14, Noon – 3 p.m. Included with Museum membership or admission.

Now Showing in IMAX:

(Check our website for special screenings)

Antarctica

The Night Before Christmas

Martinis and IMAX: Friday evenings, 5:30 p.m. – 10 p.m.

Southeastern Gem and Mineral Shows

5-7--MONTGOMERY, ALABAMA: 38th annual show; Montgomery Gem & Mineral Society; Garrett Coliseum, 1555 Federal Dr.; Fri. 9-6, Sat. 10-6, Sun. 11-5; free admission; Students' Day Fri., door prizes; contact Jane Barkley, 740 N. Georgetown Dr., Montgomery, AL 36109, (334) 277-2722; e-mail: janieb740@yahoo.com; Web site: www.montgomerygemandmineralsociety.org

5-7--SPRING HILL, FLORIDA: 34th annual show; Withlacoochee Rockhounds; Slovene American Club, 13383 County Line Rd.; Fri. 9-5, Sat. 9-5, Sun. 9-5; adults \$3, teens \$1, children 12 and under free; minerals, gemstones, fossils, demonstrations, handcrafted jewelry, lapidary equipment, gem and mineral auction, Aaron's Breastplate replica, famous diamond replicas; contact Jerry Johnson, 387 Martina Dr., Spring Hill, FL 34609, (352) 688-7819; e-mail: Hisnibs@earthlink.net

13-14--NASHVILLE, TENNESSEE: 28th annual show, "Earth Treasures"; Tennessee State Fairgrounds; Sat. 9-6, Sun. 10-5; adults \$3, students (12-17) \$1, children 12 and under free; more than 30 dealers, jewelry, gems, beads, minerals, fossils, collectibles, tools, equipment, silent auction, demonstrations, door prizes; contact John Stanley, (615) 885-5704; e-mail: jstanley@picagroup.com; or Steve Henegar, (615) 896-1472; e-mail: stevehenegar@bellsouth.net; Web site: www.mtgms.com

13-14--NORCROSS, GEORGIA: Show, "North Atlanta Gem, Mineral, Fossil, & Jewelry Show"; Mammoth Rock Shows LLC; North Atlanta Trade Center, 1700 Jeurgens Ct.; Sat. 9-7, Sun. 10-5; adults \$3, under 16 free; more than 45 dealers, grand drawing Sun., fossils, gemstones, jewelry, beads, rough rock, lapidary tools, mineral specimens; contact Richard & Janice Hightower, 7334 Quail Run Rd., Lizella, GA 31052, (478) 935-9345; e-mail: staff@mammothrock.com; Web site: www.mammothrock.com

19-21--GREENSBORO, NORTH CAROLINA: 36th show; Greensboro Gem & Mineral Club; Greensboro Coliseum, 1425 W. Lee St.; Fri. 2-7, Sat. 10-6, Sun. 12-5; adults \$3, seniors \$1, children free; geode cutting, demonstrations, hourly door prizes, free geodes; contact Joe Maguire, 3501 Geovanni Way, Greensboro, NC 27410, (336) 288-7452; e-mail: joe.maguire@tac.com; Web site: www.GGMC-rockhounds.com

Georgia State Park Events

Dahlonega Gold Museum Open House

Sunday, Dec 7, 2008 9 AM - 4:45 PM

Dahlonega Gold Museum Historic Site-Dahlonega, GA

As part of Dahlonega's Old Fashion Christmas, the museum's admission fee will be waived for the day. Visitors can learn about the nation's first gold rush and see historic coins minted in Georgia. 706-864-2257.

Southeast Federation of Mineralogical Societies

2008 Annual Meeting & Show

Hosted by
Middle Tennessee Gem & Mineral Society
Nashville, TN
December 13, 2008

Host Hotel
Holiday Inn Select
Opryland/Airport
2200 Elm Hill Pike
Nashville, TN 37214
615-883-9770

Annual Meeting at 9:00 am at the host hotel

Awards Banquet and Officer Installation
6:30 P.M. – Host Hotel

Cracker Barrel Session
Friday Night December 12 @ 7:00 P.M.

Room Rate is \$89.00 for King or Double
Call the hotel direct at 615-883-9770
Ask for the Southeast Federation Rate
Rate good for up to 3 nights before or 3 nights after

Free shuttle service to Opry Mills Mall
And Opryland Hotel
Free Airport Shuttle
Free High Speed Internet

6 miles from show site

Visit our website for more show information and location
www.mtgms.org

Southeast Federation
Website
www.amfed.org/sfms



December 2008

Sun	Mon	Tue	Wed	Thu	Fri	Sat
	1 GMS Meeting and Christmas Party	2	3	4	5	6 GMS/DMC Field Trip
7	8	9	10	11	12	13 North Atlanta Show
14 North Atlanta Show	15	16	17	18	19	20
21	22	23	24	25 	26	27
28	29	30	31			

THE GEORGIA MINERAL SOCIETY, INC.
P.O. Box 15011
Atlanta, Georgia 30333-5011
www.gamineral.org
MEMBERSHIP APPLICATION

Name: _____ Birthday: month/day _____

Email: _____

Spouse: _____ Birthday: month/day _____

Spouse's email: _____

Children's Names & Birthdays: mo/day/yr (residing at home): _____

Address: _____

City: _____ State: _____ Zip+4: _____

Home Phone(s): _____ Cell Phone(s): _____ Office Phone(s): _____

Occupations: _____

Hobbies, Interests: _____

SPECIAL INTEREST GROUPS AT GMS: (Check all that apply)

Mineral Section

Micromount Section

Fossil Section

Junior Section

Gem Section

Electronic Newsletter

Dues for New Members (Single, Couple, Family) are \$25.00 per Society year. (\$20.00 + \$5.00 Initial Processing Fee)
Renewal Dues are \$20.00 per Society year. (due 12 months from the date of joining and every 12 months thereafter)
Reinstatement Dues (For Expired Membership) are \$25.00 (\$20.00 + \$5.00 Reinstatement Fee).

FAMILY MEMBERSHIPS ARE FOR THE IMMEDIATE FAMILY INCLUDING CHILDREN RESIDING WITH PARENTS.
CHILDREN UNDER 18 YEARS OF AGE ARE CONSIDERED JUNIOR MEMBERS.

PLEASE MAKE CHECKS PAYABLE TO THE GEORGIA MINERAL SOCIETY, INC.

THE GEORGIA MINERAL SOCIETY, INC.
P.O. BOX 15011
ATLANTA, GEORGIA 30333 - 5011

ADDRESS CORRECTION REQUESTED
PLEASE FORWARD

FIRST CLASS

