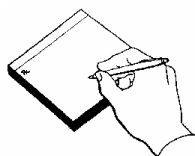


Tips *and* Trips



The Georgia Mineral Society

Atlanta, Georgia Volume XXXVI/Eleven November 2007



President's Message

Hi folks, I am honored to once again be addressing The Georgia Mineral Society as President. Kim, his Officers and his Committees did an outstanding job of advancing the Society in its purpose: "To educate the youth of the state and the members of the Society in the field of earth science." We will continue with our programs and purpose to another very successful year. I am interested in completing the By-Law revisions, working towards a satisfying culmination of our building search, and continuing the Minigrant program, our education out-reach programs, and the very successful Mother's Day Show.

I am also very interested in new ideas and growing the operating core of the Society. It is always great to see new faces at meetings, field trips and shows. From the ranks of newcomers emerge ideas, resources, and leadership potential. We old-timers only wish for the continuation and success of the Society. Experienced members or fresh faces, please step forward when asked or even before being asked and lend your strengths and talents to GMS. In return, you will receive opportunity and exposure to the great folks of GMS plus the satisfaction of knowing you have advanced education efforts, maybe learned new lapidary skills, and possibly even found some great new collecting sites!

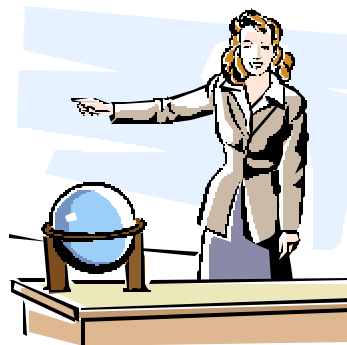
I look forward to a great GMS experience in the coming year. I hope you join us as much as you can!

Respectfully,

Bill Waggener,
President

General Meeting

7:30 PM Monday, November 5th, 2007
Chamblee Library
4115 Clairmont Road
Atlanta, GA 30341
770.936.1380



November Guest Speaker

Geology of Georgia Learning Stations

GMS member Olga Jarrett, associate professor at Georgia State University, will share some of the 15 hands-on "learning stations" she has developed to teach elementary school teachers about the geology of Georgia. After an introduction to the main concepts being covered, we'll get to try out the activities ourselves! The learning stations involve using maps, rock and mineral samples, sands, soils, and reference books that Olga will set up around the room.

Who knew there was such hidden talent among us?

And, as if that weren't enough, Olga is bringing a handout of activities that we can use when giving presentations at schools and other kid-friendly events.

Anita Westlake,
VP Programs



The Georgia Mineral Society, Inc.
 A Non-Profit Educational Organization
 Seventy Years of Tradition
 Objective and Purpose
 To Educate the Youth of the State
 and the Members of this Society
 In the Field of Earth Science



AFMS Education - All American Club 2003

President
 Bill Waggener
 1909 Moores Mill Road
 Atlanta, Georgia 30318
 404.355.7377
president@gamineral.org

Executive Vice President
 Elizabeth McClain
 4000 Lindley Circle
 Powder Springs, GA 30127
 770.439.5756
membership@gamineral.org

Vice President
 Anita Westlake
 1253 Spencer Drive
 East Point, GA 30344
 404.761.7849
programs@gamineral.org

Secretary
 Margaret Ronan
 1224 Beech Haven Rd, NE
 Atlanta, GA 30324
 404.636-0720

Treasurer
 John Trimble
 3549 Daventry Lane NW
 Kennesaw, GA 30144
 770.425.5075
treasurer@gamineral.org

Gem Section Chair
 TBD

Mineral Section Chair
 Jay Gorday
 1690 Granger Ct
 Chamblee, GA 30341
 770.986.0822
minerals@gamineral.org

Fossil Section Chair
 Martha Brown
 4837 Greenway Road
 Norcross, GA 30071
 770.448.0876
fossils@gamineral.org

Junior Section Chair
 Roxanne Lopez
 1711 Donna Lynn Drive
 Smyrna, GA 30080
 770.436.0387
juniors@gamineral.org

Micromount Section Chair
 Dave Babulski
 2677 Colony Circle
 Snellville, GA 30078
 678.580.2475
micromount@gamineral.org

Immediate Past President
 Kim Cochran
 2695 Van Court
 Snellville, GA 30278
 770.979.8331

Trustee to 2007
 Bill Waggener
 1909 Moores Mill Road
 Atlanta, Georgia 30318
 404.355.7377
wwaggenerii@bellsouth.net

Trustee to 2008
 Patricia Joan White
 9146 Sunset Drive
 Jonesboro, GA 30238-4520
 770.478.5734
iowhite@bellsouth.net

Trustee to 2009
 Eva Ostrofsky
 1402 Arbor Lake Court
 Hoschton, GA 30548
 678-425-2573

Tips & Trips Editor
 Tom Batcha
 2300 Oakland Chase ct
 Lawrenceville, GA 30044
 678-407-4224
newsletter@gamineral.org

Field Trip Chair
 George Libby
 1730 Rhett Butler Dr.
 Lilburn, GA 30047
 770.978.2117
fieldtrips@gamineral.org

May Show Chair
 Jay Gorday
 1690 Granger Court
 Chamblee, GA 30341
 770.986.0822
mayshow@gamineral.org

Webmaster
 Jim Flora
 P.O. Box 605
 Hiawassee, GA 30546
 706.896.8040
webmaster@gamineral.org

Education Chair
 Bill Waggener
 1909 Moores Mill Road
 Atlanta, Georgia 30318
 404.355.7377
education@gamineral.org

Committee Chairs

Adopt-A-Highway	Bill Waggener	770.478.5734
Assets/Equipment	Barbara Libby	770.978.2117
Awards	Carl Ziglin	770.998.5975
Building	John Trimble	770.425.5075
Curator/Gem Box	Kim Cochran	770.979.8331
Facilities	Open to Volunteers	
Historian	Roxanne Lopez	770.436.0387
Hospitality	Margaret Ronan	404.636.0720
Librarian	Julian C. Gray	770.888.9331
Parliamentarian	Frank Decamnda	770-992-8309
Refreshments	Kim Prakash & Nancy Marden	770.879.0476 770.447.8542
Special Events	Kim Cochran	770.979.8331
Sunshine	Barbara Libby	770.978.2117
Telephone	George Libby	770.978.2117
SFMS Rep.	Anita Westlake	404.761.7849

The article submittal due date for the November 2007 newsletter is October 10, 2007.

GENERAL MEETINGS
 General meetings are held on the first Monday of each month. In the event that the first Monday is a holiday and/or the facilities are not available, the meeting will be held on the third Monday of the month. General meetings are currently held at the Chamblee Branch of the DeKalb County Library System. Any deviations from the above schedule will be announced in Tips and Trips.

The Georgia Mineral Society on the Internet:
<http://www.gamineral.org>
 E-mail Early Notification Program: A field trip and club news update service. To join, members are requested to send in their current e-mail address to:
gms@gamineral.org.

May Show Committee Chairs

Show Chair	Jay Gorday	770.986.0822
Dealer Chair	Martha Brown	770.448.0876
Exhibits		404.761.7849
Demonstrations		
Hospitality		
Treasurer		
Advertising		
Dealer Dinner		
Database		
Auction		
Set Up/Take Down		



Annual Report

The 2006-2007 year was a good one for GMS. We are still the largest and probably most active society in the country. Lizabeth McClain had the task of keeping track of us all.

Mary Porter has kept track of everything that has gone on at general meetings and meeting of the Executive Board. I thought that she might actually have to read the general meeting minutes but the votes just were not enough.

When we arrived at the library Margaret Ronan welcomed everyone and gave out door prize tickets. I thank everyone for bringing door prizes. GMS members are a spoiled bunch. There are no other groups where everyone receives a door prize. Some members even grumble when they have to get more than one prize at section meetings. I am surprised to find an unwanted door prize in my freezer or tucked away some place in my living room.

Anita Westlake has provided a great variety of speakers on varied topics to educate us. Program chair can be a difficult job and you need to keep a program stuck away in case the planned program does not materialize.

Barbara Libby kept track of our assets and equipment. Make sure that when you leave a position that you pass on everything to the next person in charge. Barbara will get you if you don't. She was also in charge of Sunshine. Barbara can only call and send cards to the sick if you call and let her know.

Nancy Marden made sure that we had goodies to munch on after our meetings. She is the most cost efficient person that I know. She feels guilty when we donate money to the kitty to offset our refreshment costs. Also for the past year we have enjoyed monthly brownies baked by Richard Graveline.

For many years now have been working on by-law revisions. Under the guidance of Frank Decaminada and Jay Gorday I trust that the changes will soon be accepted.

Our library is set up at the home of Julian Gray. We have an extensive collection of books and publications for the use of our membership.

There have been a number of collections donated to us. This material is used for grab bags, door prizes, and probably the best auctions in the federation.

Speaking of the Federation, Anita Westlake still served as the state director for Georgia. She represents us at the federation meetings. We have several other members involved with the Southeast Federation. I have attended meetings where there was close to a majority of people who were GMS members.

At this time we still do not have a home. John Trimble is chairing this committee. Barbara and George Libby are constantly looking for possibilities. Just last week we looked at a house in the Lilburn-Stone Mountain area. We will have to make a decision, Should we buy? Should we lease? I don't know, we will see.

I was happy when Carl Ziglin agreed to chair the Awards Committee. Again, this job is much easier if we have input from the members.

Should you wish to learn a little more in certain subjects we have our section meetings.

Due to health reasons, Dave Babulski has not been able to have Micromount Section meetings. This may soon change. Though we have had no meetings Dave has educated us through his great articles in the Tips and Trips.

After being away in China, Roxanne Lopez has reactivated our Junior Section. We have nearly 100 juniors. They are the future. Plant a seed, it will grow. On down the road our hobby will benefit from what we do now.

Because of time restrictions Julian Gray gave up the Mineral Section. Jay Gorday stepped in. Come to the meetings and learn more about minerals.

Martha Brown is in charge of educating us about fossils. There is much interest. Come learn about the past few billion years of earth history.

Our Gem Section meetings have been very well attended. Sarah Moore gave me four additional chairs so that she would not have to sit on the floor or move. When this meeting ends there will be no Gem Section chair. I pray that someone will step up and take over.

(continued page 5)

Mineral Section

GMS Workday

This month the Mineral Section Meeting will be on the fourth Tuesday, November 27 instead of the normal third Tuesday. Richard Graveline will be hosting us. His address is 2223 Chaparral Dr (off of Pinehurst) in Snellville, GA. His cell phone number is (770) 309-4151 and email address is: abcg@bellsouth.net.

Saturday, November 10th, 2007 11:30 AM
Kim Cochran's House
2695 Van Court
Snellville, Georgia 30078

Supper will be at 6:30pm and the meeting will start at 7:30pm. Please RSVP Richard if you are coming for Supper or the meeting so he can plan ahead.

As mentioned before we will begin with a covered dish lunch. Next we will pull and sort drawers and rocks from Shed III. Afterwards we will have an auction for those who worked. Please bring chairs and tables.

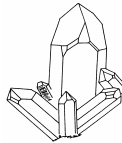
The topic for this month is red and green minerals in honor of the holidays that are just around the corner. So pull out your red and green minerals and join us for an educational evening learning about minerals.

Kim

I hope to see you at the meeting!

GMS December Meeting & Party

Thanks,



The Chamblee Community Building has been reserved for our December Meeting/Party. We have the room from 7PM to 10PM on December 3. The room is the same size or a little larger than the Library meeting room and they have tables and chairs for 125 people.

Jay Gorday
GMS Mineral Section Chair

The address is 3496 Keswick Drive in Chamblee. This is a mile or two from the Chamblee Library on the other side of Peachtree Industrial Blvd. There is plenty of parking and is easy to get to. I will have a map and directions at the November meeting and in our December newsletter.

Junior Section

[Geology Day](#)

[Providence Canyon State Park - Lumpkin](#)

Saturday, November 3
11:00 am -3:00 pm

Jay Gorday

About a 3 hour drive from North Atlanta. Providence Canyon is one of the great geographic wonders of the eastern United States. Join Professor Rich McWilliams of Thomas University in Thomasville, Ga. for a close up view of this most unusual state park. \$3 parking. 229-838-6202. For any additional information, call Roxanne below. For directions check the state park website. <http://gastateparks.org>

Roxanne Lopez
Junior Chair
678-491-0489

Membership

Please join me in welcoming the following new members to Georgia Mineral Society: Neal, Karen, and Matthew Floyd of Cornelius, NC; Nianne and Barry Mullis of Dahlonega, GA; and Gene Tipton of Clinton, TN.

I apologize for omitting some new members from my article last month. I mentioned Ed Reid, but I left out his wife Ellen and their son William. I also mentioned Victoria Torley, but I left out her husband Larry and their son David. Of course, we welcome all of you to the club.

Fossil Section News

We will not have a meeting in November, December or January. The next meeting will be in February. Thank you.

I hope we'll get to meet all of you at a meeting or field trip very soon. Don't forget to send in those renewals on a timely basis, everyone, and please let me know if you have any e-mail or address changes. You may e-mail me at mgm5258@netzero.net or call me at 770-439-5756.

Martha S. Brown -
Fossil Section Chair
770/448-0876
www.wlbvouva@aol.com



Happy Rockhounding!

Lizabeth McClain
Executive VP/Membership



Annual Report (continued)

At the beginning of the year Tips and Trips was edited by Joan White. A few months ago Tom Batcha took over. We have always had an award winning bulletin and I am certain that we will continue on that path.

Last December we held our final fall show. I will miss having shows so close to home. Our original show at the Cobb Civic Center is still going strong under Jay Gorday and under his leadership. I know that it will continue to be a great show.

George Libby has led us on many great field trips. We collected a variety of minerals and fossils. This position can be difficult as we are steadily losing collecting sites.

I would like to give a big thank you to Jim Flora our webmaster. I don't know how many times during the year that he has posted sudden changes or new information through something called email on the internet whatever that is.

Financially we are doing well. Dylan Porter started out as Treasurer, later John Trimble took over. John is looking after our funds. It will make his job easier if you use the proper codes when submitting bills or receipts.

Have you ever driven down the road and have seen a number of people and a nun picking up trash? You should have seen the look on the faces of people whose van broke down when they saw that the nun had a moustache! Bill Waggener again chaired Adopt-A-Highway. We are contributing to have a healthier environment. Whether it is a massed trash pick up or an Easter egg hunt pick up we have a good time. Let me encourage you to attend the next pick up at the end of this month. Wouldn't it be great if we had a whole flock of nuns picking up trash?

So, there you are, we have had an active year.

But wait, aren't we supposed to educate?

Bill has also served as Education Chair. We gave out many scholarships to elementary and middle school earth science teachers.

We have learned at our meetings and we continued to reach out to other people. We have members who are associated and volunteer at Fernbank and the Atlanta History Center. Our members spoke to schools and civic groups all over. Last year our outreach went to five states and Australia.

I have given my thanks to a handful of members. But it took many many more members to make our endeavors a success. I wish to give a big thank you to all of our

members who have chipped in. It takes more than just a handful it takes you the membership for us to carry out our goal.

We are now beginning our 73rd year. I am looking forward to many more successful years to come.

Thank you GMS!

Kim



Sunshine News

NOVEMBER BIRTHDAYS

- 11/2 Adam Flake
11/3 Travis Summerour
11/3 Mack Trentini
11/4 Jim Haege
11/5 Dudley Glenn
11/5 Jennifer Goblisch
11/5 Barbara Leurs
11/6 Stephanie Hammill
11/9 Gail Baumgardner
11/10 Maxine Batcha
11/10 David Callahan
11/11 Sandy Bateman
11/11 Luke DesJardins
11/12 Brinson Prince
11/12 Heather Prorise
11/13 Danya Davis
11/13 Cheryl Martin
11/13 Rand Wise
11/15 Samuel Snipes, Sr.
11/17 Michael Bateman
11/20 William Lamb
11/23 Sarah Hooper
11/24 Gay Marose
11/25 Jennifer Addison
11/26 Thelma Heywood
11/26 Denise Klinger
11/26 Ashley Summerour
11/28 Gregory Smart
11/30 Cantey Smith



NOVEMBER 2007 ANNIVERSARY

- 11/22 Ed and Nelia Doyle

Please send information on news you would like to share with GMS. My email address is angelonsite@bellsouth.net.

Thanks. You are all in my prayers, be well and you will hear from me next month.

Everybody have SUNSHINE in your life.

Barbara Libby,
Sunshine Chair

October 1, 2007 GMS Banquet Meeting Minutes

The meeting was called to order at 8:10 PM by President Kim Cochran at the Colonnade Restaurant, following dinner. 41 people were present, including 2 visitors Frankie Burkes and Bob Bowman. Our newest active members Jane and Joe Broome, and Chris Glass, President of the Aiken Gem and Mineral Society, were recognized. Kim then recognized past Presidents of GMS in attendance (Frank Decaminada, Anita Westlake, Bill Waggener, and Kim Cochran).

Mary Porter - Secretary – minutes from September meeting available. A Frank Decaminada made a motion to dispense with reading of minutes; it was seconded by Jay Gorday and was passed.

John Trimble – Treasurer – Jay Gorday made a motion to dispense with the treasurers report; it was seconded by Frank Decaminada and was passed.

Kim Cochran – gave Outgoing President’s speech outlining GMS’s accomplishments within the past year.

AWARDS (8:22) – Carl Ziglin presented awards.

Gold Nugget Certificates – Nancy Marden, Mickey and Lizabeth McClain (one award), Martha Brown (not present), Dave Babulski, John Trimble.

Certificates of Appreciation – George and Barbara Libby (one award), Bill Waggener, Anita Westlake.

President’s Award – Jay Gorday received an engraved award.

Member of the Year – Margaret Ronan received an engraved award and a polished ammonite.

To show her appreciation, Nancy Marden split the donations to the refreshment kitty between all of the people who provided goodies throughout the year.

SHOW CHAIR GIFTS (8:40)

Anita Westlake (December Dealer Chair) presented Kim Cochran (December Show Chair) with an amazonite crystal.

Kim presented Anita with a specimen of chalcedony after calcite, a carved tauga nut, and an amber pendant.

Martha Brown (May Dealer Chair) was not present. Jay Gorday (May Show Chair) announced that their gift exchange would take place at the next general meeting.

AFMS AWARDS

Kim Cochran presented the following awards that were given at the Federation meeting held in Roswell, NM. Original adult articles, honorable mention – Sue Gorday and Dylan Porter.

New editor, large bulletins - 9th place Joan White, *Tips & Trips*.

Advanced adult articles – Dave Babulski, 3rd place; Julian Gray, honorable mention.

INSTALLATION OF OFFICERS (8:50)

Frank Decaminada swore in the following officers:
Bill Waggener – President, Gem Section Chair
Lizabeth McClain – Executive Vice President, Membership
Anita Westlake – Vice President, Programs
Margaret Ronan – Secretary
John Trimble - Treasurer
Marcella Wood – Trustee
Eva Ostrofsky – Trustee

INCOMING PRESIDENT’S MESSAGE

Kim Cochran passed the GMS gavel to Bill Waggener, who delivered his speech as incoming president.

ANNOUNCEMENTS

Jay Gorday – the December meeting and holiday party will be held at the Chamblee Community Center instead of the library. Details will be in an upcoming newsletter.

Bill Waggener – the next board meeting will be held on November 4th at the home of Mickey and Lizabeth McClain. All members are welcome to attend.

DOOR PRIZES - door prizes numbers, which were written inside programs, were called.

Jay Gorday made a motion to adjourn meeting at 9:04PM. It was seconded by Sue Gorday, and unanimously approved.

Respectfully submitted,

Mary Porter,
Outgoing Secretary

.....

Micromount News



The Micromount Corner
Dave’s next Micromount Corner article will be on the topic of gold. We look forward to its completion.

The Micromount Section
Dave is trying to make arrangements for Micromount Section meetings at a local high school. Nothing is firm as of this date.

For more information contact:
Dave Babulski
Micromount Section Chair
d.babulski@comcast.net
678-580-2475

**An Official Field Trip of
Southern Appalachian Mineral Society
And
the Georgia Mineral Society**

Saturday, November 10, 2007

10:00 AM to 5:00 PM,

Nantahala Talc and Limestone Quarry
Hewitt, North Carolina

WHERE: Nantahala Talc and Limestone Quarry, Hewitt, North Carolina (in the beautiful Nantahala gorge).

WHAT: Banded pink, gray and yellow marble, calcite, dolomite, pyrite, travertine and talc.

COLLECTING HOURS: Participants must arrive at 10:00 A.M. to check-in, sign a release form, and receive a brief safety briefing. The dig will last until 5:00 P.M. There is no fee for this dig.

If children come, they MUST be in CLOSE proximity to their parent(s) at all times. All young people under 18 must be with an adult/parent at all times. This is a working quarry with high unstable walls so everyone must stay away from the walls.

SPECIAL CONDITIONS: Hard hats and safety glasses are required. It is also recommended that you wear sturdy shoes, gloves, and appropriate outer clothing. The average daily high temperature for November 10th is 62°F, but the day will most likely start out in the mid-40s. Collecting is possible rain or shine.

WHAT TO BRING: Bring buckets and containers, rock and crack hammers, picks, sledge hammers, and flat and pointed chisels. We will drive into the large quarry and park on a mid-level bench. Bring a lunch and water and be prepared to do your "duty" in the woods as there are no nearby facilities. It will be possible to drive about ¼ mile to the quarry office for "relief", if necessary.

WHERE TO STAY: Towns within 30 miles from the meeting spot with motels, campgrounds and other facilities: Andrews; Bryson City; Cherokee; Robbinsville; and Murphy.

DIRECTIONS: We will meet at 10:00 AM at a Roadside Park/Rest Area on US-74 at Hewitt, North Carolina and proceed as a group to the nearby quarry.

From the West: From the intersection of US-19 business and US-74E at Andrews, NC, drive approximately 12 miles east on US-74E to the roadside park/rest area on the left-hand (north) side of highway (just past the bridge over the Nantahala River).

From the East: From the intersection of US-19business and US-74W at Bryson City, NC, drive approximately 17.5 miles west on US-74W to the roadside park on the right-hand (north) side of the highway (just before the bridge over the Nantahala River).

FOR ONLINE INFORMATION AND PICTURES OF THE QUARRY:

<http://www.mcrocks.com/ftr/StreeterNantahalaNovember05.html>

CONTACT INFORMATION: Mike Streeter – Email: mcstreeter@charter.net Phone: (828) 667-8290



The Southeast Federation of Mineralogical Societies, Inc

The Friendly Federation - Founded in 1976 to serve.

**DMC Program of the SFMS Field Trip Committee
An Official Field Trip of
The Western South Carolina Gem and Mineral Society (Greenville, SC)(HOST)
An Official Field Trip of
the GEORGIA MINERAL SOCIETY**

December 1, 2007

Amos Cunningham Farm

Due West/Antreville Area, South Carolina

9:00 AM - 3:00 PM

FEE SITE

What: Mineral Collecting Trip- good sized beryl crystals, amethyst and smokey quartz. This site has the best South Carolina beryl specimens of any site that I know how to get access to. The crystals are well shaped hexagons with flat ends. The color is green though most have a blue cast. The beryl ranges from translucent to opaque. Most crystals are specimen quality though some gem quality is present.

Where: The Amos Cunningham Farm is between Antreville and Due West, SC. From Anderson, SC drive 18 miles down route 28 East (really south) to Antreville. Turn left on route 184 East heading toward the town of Due West. Travel for 4 miles and turn left on the George Alewine Road. Drive for less than 1 mile. You will pass a trash/recycling site on the right, cross a bridge over a small creek and turn into the first land on the right. If you pass the Cunningham Backhoe Service on the left you have gone too far.

When: Saturday, December 1, 2007 from 9:00 AM until 3:30 PM.

Digging Conditions: The site is flat to rolling land of South Carolina red clay. The digging areas have been machine trenched down to white kaolite veins that have the beryl and quartz crystals. Dirt and rock removed from the trenches and piled up, also contain beryl and are good places to search especially after a rain.

What to Bring: Bring picks, shovels, rock hammers and scratching tools. Large hammers will not be very useful. Also bring plenty of drinks and a picnic lunch unless you want to drive a few miles for lunch.

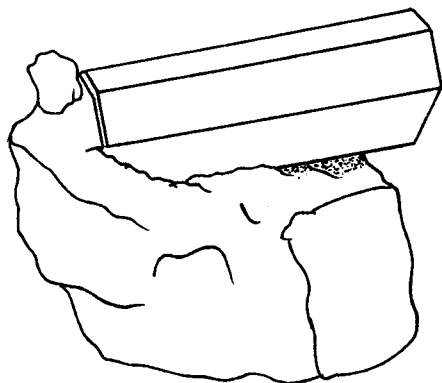
Cost: **\$15.00 per person.** Children 12 years old and under are free. Children and pets must be supervised by an adult. Everybody attending the dig must be a member of a Southeast Federation Club and must sign a Release Form. Mr. Cunningham will also have good specimens for sale at his Cunningham Backhoe and Bushhogging Service building.

Lodging: There are many motels in and around Anderson, SC. There is no lodging in Antreville or Due West.

Contact Person: Any questions call Bill Wetzel at 864-306-6749 or email williampkerri@bellsouth.net. On the day of the field trip call 864-569-5404.

"Field trips are open to all members of associated clubs of the DMC program of the SFMS Field Trip Committee and to all members of SFMS member clubs who have provided their membership with SFMS liability insurance. Because of insurance requirements, members of the GENERAL PUBLIC are NOT invited on this or any DMC program field trips!"

DMC Program / SFMS Field Trip committee's purpose:
To collect field trip information from it's member societies; schedule and coordinate field trip dates; disseminate field trip information to all member clubs so that each member society may publish this information as one of their "official" scheduled field trips.



(Mineral clipart by Diamond Dan)

Annual Mineral Symposium

Saturday November 3, 2007 8:30am - 4:00pm

Holiday Inn Cartersville

I-75 @ Exit 293

Sponsored by the Southeast Chapter Friends of Mineralogy
and
Tellus: Northwest Georgia Science Museum

\$18.00 (includes Coffee Reception and Lunch)

Registration - 770.386.0576 x 400

Mining in the Southeast

The South has a long mining tradition, involving ores such as gold, mica, iron, granite and marble. This year's topic will cover historic and current mining activities in the region.

Bumpi Barwood - Indian Mountain

Tom Batcha - Iron Mining and the Furnaces of the South

Stan Bearden - Cartersville Mining District

Travis Paris - Gold Mining in the Southeast

Phil Potter - Mica Mining in North Carolina

Schedule

8:30 - 9:00-Coffee Reception, Registration

9:00 - 10:00- Welcome

10:00 - 12:00-Talks

12:00 - 1:30-Lunch

1:30 - 3:00-Talks

3:00 - 4:00-Business Meeting and Auction

Jose Santamaria, Executive Director
Tellus: Northwest Georgia Science Museum
PO Box 3663

Cartersville, Georgia 30120

Ph: 770.386.0576 x401

Fx: 770.386.0600

www.tellusmuseum.org

Southeastern Rock and Gem Shows

3-4--STUART, FLORIDA: Show; St. Lucie County Rock & Gem Club; Martin County Fairgrounds, 2616 S.E. Dixie Hwy. (A1A); Sat. 10-5, Sun. 10-5; adults \$4, children under 12 free with parent, discount coupon on Web site; demonstrations, displays, finished jewelry, lapidary supplies, minerals, beads, cab and facet rough; contact Norm Holbert, 455 S.W. Balfour Ave., Port St. Lucie, FL 34953, (772) 873-0787; e-mail: normholbert@bellsouth.net; Web site: www.rockworkshop.org.

10-11--MELBOURNE, FLORIDA: Show, "Parade of Gems"; Canaveral Mineral & Gem Society; Melbourne Auditorium, 625 E. Hibiscus Ave.; Sat. 10-5, Sun. 10-5; adults \$4; contact Anita Lane, 720 Central Blvd., Melbourne, FL 32901, (321) 723-0742; e-mail: lanesfinejewelry@aol.com.

16-18--MARIETTA, GEORGIA: 22nd annual show; Cobb County Gem & Mineral Society; Cobb County Civic Center, 548 S. Marietta Pkwy.; Fri. 10-6, Sat. 10-6, Sun. 10-5; free admission; 36 dealers, jewelry, gemstones, minerals, specimens, fossils, crystals, demonstrations, hourly door prizes, special displays; contact Mike Ingram, 2771 Fernvalley Rd. NE, Marietta, GA 30066, (770) 427-1108; e-mail: mandmingram@comcast.com; Web site: www.cobbcountymineral.org.

16-18--MORGANTON, NORTH CAROLINA: Holiday show; City of Morganton; Collett Street Recreation Center, 300 Collett St.; Fri. 9-6, Sat. 10-6, Sun. 12-5; adults \$2, children under 12 \$1; exhibitors, minerals, gems, jewelry, dealers, specimens, lapidary supplies; contact Gary Leonhardt, 300 Collett St., Morganton, NC 28655, (828) 438-5350; e-mail: gleonhardt@ci.morganton.nc.us; Web site: www.ci.morganton.nc.us.

23-25--COLUMBIA, SOUTH CAROLINA: 40th annual show; Columbia Gem & Mineral Society; South Carolina State Museum, 301 Gervais St.; Fri. 10-6, Sat. 10-6, Sun. 12-5; adults \$3.50, children 12 and under free; member displays, demonstrations, 26 dealers, rough and cut gems, jewelry, fossils, minerals, beads, lapidary supplies, geodes; contact Susan L. Shrader, 7719 Wessex Ln., Columbia, SC 29223, (803) 736-9317; e-mail: ashnader@mindspring.com; Web site: www.cgams.org.
(See show flyer and coupon on page 15)

23-25--MOBILE, ALABAMA: 13th annual show; Mobile Rock & Gem Society; Greater Gulf State Fairgrounds, Zeigler Rd. and Cody Rd.; Fri. 2-7, Sat. 9-6, Sun. 10-5; adults \$3, students \$2, children under 12 free; jewelry, gems, minerals, adults \$2 with this listing; contact Jerry Shirey, 2911 Pretty Branch Dr. W, Mobile, AL 36618, (251) 649-5185; e-mail: Rockhoundjs@aol.com; Web site: www.geocities.com/mobilerockandgem/MRGChome.htm.

30-Dec2--MONTGOMERY, ALABAMA: 37th annual show; Montgomery Gem & Mineral Society; Garrett Coliseum, Federal Dr.; Fri. 9-6, Sat. 10-6, Sun. 11-5; free admission; door prizes; contact Jane Barkley, (334) 277-272, or Iris McGhee, (334) 262-7275; Web site: www.montgomerygemandmineralsociety.org.

.....

Georgia State Park Events

Geology Day

Saturday, November 3; 11:00 am -3:00 pm
Providence Canyon State Park - Lumpkin

Providence Canyon is one of the great geographic wonders of the eastern United States. Join Professor Rich McWilliams of Thomas University in Thomasville, Ga. for a closeup view of this most unusual state park. \$3 parking. 229-838-6202.

.....

Fernbank Museum of Natural History

76 Clifton Rd. NE
Atlanta, GA
404.929.6300

For details on these exhibits, films, and events, please visit our website at <http://www.fernbank.edu/museum/>

On Exhibit:

Frogs: A Chorus of Colors

Nature's Jewels: Butterflies and Other Insects (photography)

APALACHICOLA RIVER: An American Treasure (photography)



Upcoming Public Programs:

Cub Scout Day. Saturday, November 3, 10 a.m. – 2 p.m. Included with admission or membership. Cub Scouts in uniform receive ½ off child's Museum admission, valid 11/3/07 only.

Lecture: Prehistoric Sea Creatures of the South, Dr. David Schwimmer. Sunday, November 11, 2 p.m. Members: free; non-members: free with paid admission. Reservations required, 404.929.6400.

Now Showing in IMAX:

(Check our website for special screenings)

The Alps

Sea Monsters

Martinis and IMAX: Friday evenings, 5:30 p.m. – 10 p.m. 2007 Season Closes on November 23.

THE NORTH ATLANTA CHRISTMAS SHOW

**The North Atlanta Trade Center
Norcross GA
December 7-9, 2007**

This is a personal invitation to all our friends and fellow rock hounds to attend the show in December at the North Atlanta Trade Center.

As most of you are aware, this show has been held for the past 13 years by the GA Mineral Society. We have chosen to continue this popular show after they decided that they needed a rest from doing two shows a year. This is a great time of the year for a show. Due to the many years of hard work by the GMS members, this show has always been good for the dealers and the customers.

We are Janice & Richard Hightower, owners of "The Stones & Bones Collection". We formed the LLC of Mammoth Rock Shows to promote the show. Having done trade shows for over 20 years, we are attempting to take the "best" of our experiences and incorporate them into this show. In order to help defray the expense of hosting a show, we will be charging a minimal admission fee of \$3.00

The rock clubs and the rock shows need each other. Obviously shows depend on attendance to survive and clubs depend on steady interest and new members to also survive. One of the best ways to advertise and educate the public of our hobby is through trade shows. We will be happy to provide flyers to the visitors about the various rock clubs if the clubs will get them to us. Clubs that would like a meet and greet table just need to contact me in advance of the show. We would be happy to provide the table.

We want you to come and support us and bring your friends. We are offering a free admission coupon, which you can duplicate as many times as needed, and use for family members and friends. This coupon is for ages 16 and above, (children below 16 with adults are free). Also this coupon will be your entry for one of the three "Very Nice" door prizes.

As this is our first year, we wanted to make it special by offering some very nice door prizes. We will be drawing on Sunday evening for a Mammoth tusk, a large Seven Shade Jade vase, and a set of diamond earrings. In addition to these great door prizes, we will be awarding a \$25.00 gift certificate every hour of the show.

There is a highly sought after exhibit that has been touring the country for years and will finally make its "First Ever" appearance in Georgia! Many of you have seen this exhibit at other shows and will know what to expect. For those of you who have never seen it, you are in for a treat. Imagine, if you will a marvelous food banquet laid out for a large family gathering. Everything looks wonderful and mouth-watering. Now imagine that every single item on the table is a rock.

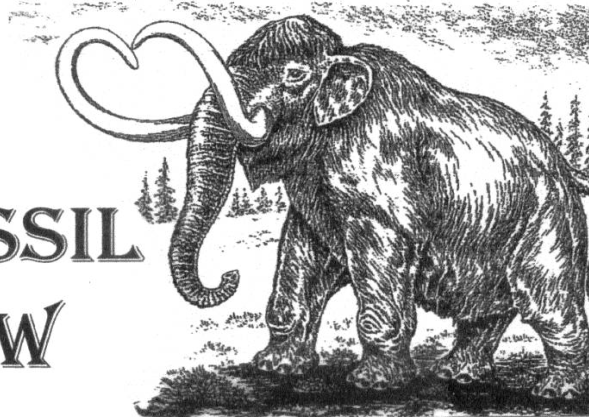
Each year, Lois & Bill Patillo of Robstown, TX, add new items, so each time you see the table there will be something new. They will both be at the exhibit during the show to greet and explain the many different food items and where they came from. Please stop by and welcome them to our area and enjoy the exhibit.

We have worked really hard to make this a great show and cordially invite you to be a part of it. We look forward to seeing you there.

Sincerely,

Richard & Janice Hightower

NORTH ATLANTA GEM, MINERAL, FOSSIL AND JEWELRY SHOW



DECEMBER 7-9, 2007 FRI & SAT 10-6, SUNDAY 11-5

NORTH ATLANTA TRADE CENTER, NORCROSS, GA
(From Atlanta, Exit 101 right off I-85 then right at second light)
THE LARGEST SHOW IN GEORGIA (45+ DEALERS)

***THREE GRAND DOOR PRIZES:**

**AN AUTHENTIC MAMMOTH TUSK WITH STAND
LARGE SERPENTINE VASE
PAIR OF DIAMOND EARRING**

***SPECIAL EXHIBITS:**

**THE FAMOUS ROCK TABLE – (FIRST TIME IN GEORGIA)
FULLY MOUNTED CAVE BEAR & LARGE DINOSAUR EGG NEST**

***\$25 GIFT CERTIFICATE AWARDED HOURLY**

*** FOR MORE INFORMATION VISIT:**

WWW.MAMMOTHROCK.COM

***Admission \$3 for adults**

***Children under 16 FREE
when with adults**

***Free Parking**

CLUB MEMBER FREE ADMISSION COUPON

NAME: _____

STREET: _____

CITY&STATE: _____

PHONE# _____

(Photo copies accepted)

October Annual Dinner

Photos by Jay Gorday



Awards report for 2007

Awards Committee:
Carl Ziglin (Chair),
Anita Westlake,
Kim Cochran

Total expenditure: \$308.21

Awards presented at the annual banquet
on October 1, 2007:

Member of the Year Award

Margaret Ronan

President's Award

Jay Gorday

Appreciation Awards

Anita Westlake
George & Barbara Libby
Bill Waggener

Gold Nugget Awards

John Trimble
Dr. David Babulski
Martha Brown
Mickey and Lizabeth McLain
Nancy Marden

Respectfully submitted,

Carl Ziglin







Corrections to 8-8-07 proposed GMS By-laws

Thanks to all the GMS Members who read thru all the proposed GMS By-laws and found errors. I must have forgotten to spell check this version. All of us who has been working on the revisions missed the wording for the education committee in Article IX Section 6. Below are the corrections to the various errors. If we are able to get this in the October Tips and Trips, then we will vote on the corrected By-laws at the November Meeting, if they get published in the November newsletter, we will vote on them at the December meeting. Once again, thanks for everyone attention to this process.

1. Article II Section 3a: Correct singular/plural in last paragraph to read:

Honorary Members, not otherwise affiliated with the Society as regular dues-paying members or as active participants in the Society meetings and affairs, shall be ineligible to vote or to hold any Society office.

2. Article II Section 4: Change to read:

Section 4 Junior membership. Individuals under age of 18 are considered to be Junior members.

3. Article VI Section 1: Change to read:

Section 1 Regular Meetings. Regular meeting shall be held monthly, whenever possible, on the first Monday of each month. The time, place, and date of the meeting shall be designated by the Vice President.

4. Article VI Section 5: Change to read:

Section 5 Changes in Meeting. The Vice President may change the time and place of any meeting, if for any reason it may be advisable.

5. Article VIII Section 1a: correct spelling of designee in line 1, delete "it" at the end of the sentence in line 4 and change appertains to pertains in line 7.

6. Article VIII Section 2f: Correct spelling of Parliamentarian and delete "; shall" at the end of the paragraph.

7. Article IX Section 6: Change to read:

Section 6 Education Committee shall be composed of the Educational Committee Chair, current President, Executive Vice President and Vice President. The Educational Committee shall promote the educational, scientific and recreational aspects of the Society.

8. Article X Section 4: Correct spelling of composed and it

9. Article X Section 5: Correct spelling of Micromounts.

November 2007

Sun	Mbn	Tue	Wed	Thu	Fri	Sat
				1	2	3 Junior Section Field Trip Mineral Symposium
4	5 General Meeting	6	7	8	9	10 GMS Workday Field Trip
11	12	13	14	15	16 Cobb County Gem Show	17 Cobb County Gem Show
18 Cobb County Gem Show	19	20	21	22	23	24
25	26	27 Mineral Section Meeting	28	29	30	

A NON PROFIT EDUCATIONAL ASSOCIATION

2007
Columbia Gem & Mineral Society
40th Annual



Gem Mineral & Jewelry Show

Fri. Nov. 23, 10 - 6
Sat. Nov. 24, 10 - 6
Sun. Nov. 25, 12 - 5

New Location
South Carolina State Museum
301 Gervais St. www.museum.state.sc.us

Adults \$3.50.... Children 12 & Under Free
Sunday ALL Military FREE
(803) 736-9317... www.cgams.org
Does not include admission to The SC State Museum

50¢ OFF ADMISSION WITH THIS COUPON
and For Gem Show only
includes \$1.00 off museum admission

THE GEORGIA MINERAL SOCIETY, INC.

P.O. Box 15011

Atlanta, Georgia 30333-5011

www.gamineral.org

MEMBERSHIP APPLICATION

Name: _____ Birthday: month/day _____

Email: _____

Spouse: _____ Birthday: month/day _____

Spouse's email: _____

Children's Names & Birthdays: mo/day/yr (residing at home): _____

Address: _____

City: _____ State: _____ Zip+4: _____

Home Phone(s): _____ Cell Phone(s): _____ Office Phone(s): _____

Occupations: _____

Hobbies, Interests : _____

SPECIAL INTEREST GROUPS AT GMS: (Check all that apply)

Mineral Section

Micromount Section

Fossil Section

Junior Section

Gem Section

Electronic Newsletter

Dues for New Members (Single, Couple, Family) are \$25.00 per Society year. (\$20.00 + \$5.00 Initial Processing Fee)
Renewal Dues are \$20.00 per Society year. (due 12 months from the date of joining and every 12 months thereafter)
Reinstatement Dues (For Expired Membership) are \$25.00 (\$20.00 + \$5.00 Reinstatement Fee).

FAMILY MEMBERSHIPS ARE FOR THE IMMEDIATE FAMILY INCLUDING CHILDREN RESIDING WITH PARENTS.
CHILDREN UNDER 18 YEARS OF AGE ARE CONSIDERED JUNIOR MEMBERS.

PLEASE MAKE CHECKS PAYABLE TO THE GEORGIA MINERAL SOCIETY, INC.

THE GEORGIA MINERAL SOCIETY, INC.

P.O. BOX 15011

ATLANTA, GEORGIA 30333 - 5011

ADDRESS CORRECTION REQUESTED

PLEASE FORWARD

FIRST CLASS

