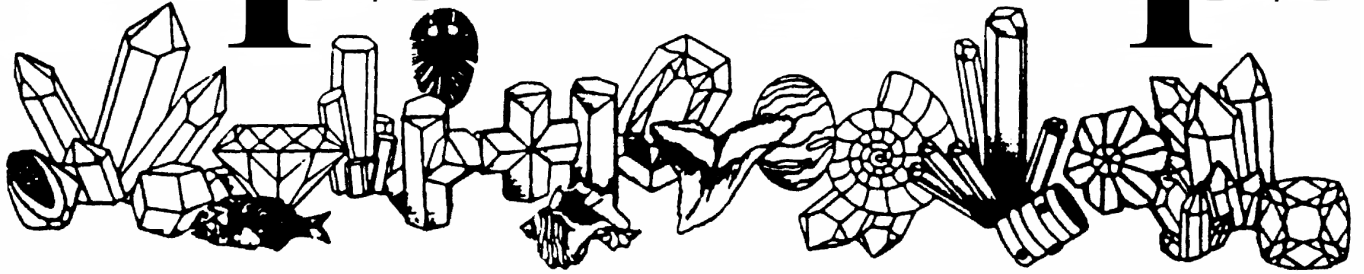


# Tips *and* Trips



The Georgia Mineral Society

\*Atlanta, Georgia\* Volume XXXVI/Ten

October 2007



Dave with his microscopes at Stone Mountain Gem and Mineral Day

## President's Message

Another year is ending. Our members have worked diligently to educate the youth of the state, our chief goal. It has been a pleasure to work with membership during the past two years. I wish Bill Waggener all the best as he takes the helm at the October Dinner Meeting.

Kim

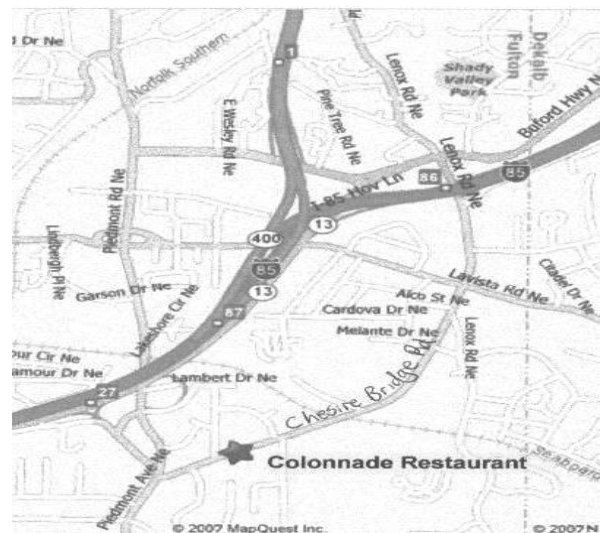


Sue in Geology lab at Fernbank for the Dino Birthday Bash

October Dinner Meeting  
Monday, October 1st, 2007  
6:30 PM  
Colonnade Restaurant  
1879 Chesire Bridge Road, Atlanta, GA  
Cost - \$18.00 / person

Please join us for a delicious dinner, the swearing in of new officers and the presentation of awards. A vegetarian dinner can be provided. Contact me for reservations 770-979-8331. The deadline for reservations is September 28<sup>th</sup>.

Kim



## Speakers for October

Our speakers for October will be Kim Cochran as outgoing President, and Bill Waggener as in-coming President during our banquet at the Colonnade. Let's wash the rock dirt off and come dressed to thrill!

Anita Westlake,  
VP Programs



**The Georgia Mineral Society, Inc.**  
 A Non-Profit Educational Organization  
 Seventy Years of Tradition  
 Objective and Purpose  
 To Educate the Youth of the State  
 and the Members of this Society  
 In the Field of Earth Science



**AFMS Education - All American Club 2003**

**President**  
 Kim Cochran  
 2695 Van Court  
 Snellville, GA 30278  
 770.979.8331

**Executive VP/Membership**  
 Lizabeth McClain  
 4000 Lindley Circle  
 Powder Springs, GA 30127  
 770.439.5756  
[membership@gaminerall.org](mailto:membership@gaminerall.org)

**Vice President/Programs**  
 Anita Westlake  
 1253 Spenser Drive  
 East Point, GA 30344  
 404.761.7849  
[programs@gaminerall.org](mailto:programs@gaminerall.org)

**Secretary**  
 Mary Porter  
 196 High Creek Drive  
 Roswell, GA  
 770.998.1018  
[secretary@gaminerall.org](mailto:secretary@gaminerall.org)

**Treasurer**  
 John Trimble  
 3549 Daventry Lane NW  
 Kennesaw, GA 30144  
 770.425.5075  
[treasurer@gaminerall.org](mailto:treasurer@gaminerall.org)

**Gem Section Chair**  
 Kim Cochran  
 2695 Van Court  
 Snellville, GA 30278  
 770.979.8331

**Mineral Section Chair**  
 Jay Gorday  
 1690 Granger Ct  
 Chamblee, GA 30341  
 770.986.0822  
[minerals@gaminerall.org](mailto:minerals@gaminerall.org)

**Fossil Section Chair**  
 Martha Brown  
 4837 Greenway Road  
 Norcross, GA 30071  
 770.448.0876  
[fossils@gaminerall.org](mailto:fossils@gaminerall.org)

**Junior Section Chair**  
 Roxanne Lopez  
 1711 Donna Lynn Drive  
 Smyrna, GA 30080  
 770.436.0387  
[juniors@gaminerall.org](mailto:juniors@gaminerall.org)

**Micromount Section Chair**  
 Dave Babulski  
 2677 Colony Circle  
 Snellville, GA 30078  
 678.580.2475  
[micromount@gaminerall.org](mailto:micromount@gaminerall.org)

**Immediate Past President**  
 Kim Cochran  
 2695 Van Court  
 Snellville, GA 30278  
 770.979.8331

**Trustee to 2007**  
 Bill Waggener  
 9146 Sunset Drive  
 Jonesboro, GA 30238  
 770.478.5734  
[waggeneri@bellsouth.net](mailto:waggeneri@bellsouth.net)

**Trustee to 2008**  
 Patricia Joan White  
 9146 Sunset Drive  
 Jonesboro, GA 30238-4520  
 770.478.5734  
[iowhite@bellsouth.net](mailto:iowhite@bellsouth.net)

**Trustee to 2009**  
 Eva Ostrofsky  
 1402 Arbor Lake Court  
 Hoschton, GA 30548  
 678-425-2573

**Tips & Trips Editor**  
 Tom Batcha  
 2300 Oakland Chase ct  
 Lawrenceville, GA 30044  
 678-407-4224  
[newsletter@gaminerall.org](mailto:newsletter@gaminerall.org)

**Field Trip Chair**  
 George Libby  
 1730 Rhett Butler Dr.  
 Lilburn, GA 30047  
 770.978.2117  
[fieldtrips@gaminerall.org](mailto:fieldtrips@gaminerall.org)

**May Show Chair**  
 Jay Gorday  
 1690 Granger Court  
 Chamblee, GA 30341  
 770.986.0822  
[mayshow@gaminerall.org](mailto:mayshow@gaminerall.org)

**Webmaster**  
 Jim Flora  
 P.O. Box 605  
 Hiawassee, GA 30546  
 706.896.8040  
[webmaster@gaminerall.org](mailto:webmaster@gaminerall.org)

**Education Chair**  
 Bill Waggener  
 9146 Sunset Drive  
 Jonesboro, GA 30238  
 770.478.5734  
[education@gaminerall.org](mailto:education@gaminerall.org)

**Committee Chairs**

Adopt-A-Highway	Bill Waggener	770.478.5734
Assets/Equipment	Barbara Libby	770.978.2117
Awards	Carl Ziglin	770.998.5975
Building	John Trimble	770.425.5075
Curator/Gem Box	Kim Cochran	770.979.8331
Facilities	<b>Open to Volunteers</b>	
Historian	Roxanne Lopez	770.436.0387
Hospitality	Margaret Ronan	404.636.0720
Librarian	Julian C. Gray	770.888.9331
Parliamentarian	Frank Decamnda	770-992-8309
Refreshments	Kim Prakash & Nancy Marden	770.879.0476 770.447.8542
Special Events	Kim Cochran	770.979.8331
Sunshine	Barbara Libby	770.978.2117
Telephone	George Libby	770.978.2117
SFMS Rep.	Anita Westlake	404.761.7849

**The article submittal due date for the November 2007 newsletter is October 10, 2007.**

**GENERAL MEETINGS**  
 General meetings are held on the first Monday of each month. In the event that the first Monday is a holiday and/or the facilities are not available, the meeting will be held on the third Monday of the month. General meetings are currently held at the Chamblee Branch of the DeKalb County Library System. Any deviations from the above schedule will be announced in Tips and Trips.

**The Georgia Mineral Society on the Internet:**  
<http://www.gaminerall.org>  
 E-mail Early Notification Program: A field trip and club news update service. To join, members are requested to send in their current e-mail address to:  
[gms@gaminerall.org](mailto:gms@gaminerall.org)

**May Show Committee Chairs**

Show Chair	Jay Gorday	770.986.0822
Dealer Chair	Martha Brown	770.448.0876
Exhibits		404.761.7849
Demonstrations		
Hospitality		
Treasurer		
Advertising		
Dealer Dinner		
Database		
Auction		
Set Up/Take Down		

## The Georgia Mineral Society

October 2007

**September 17, 2007**  
**GMS General Meeting Minutes**

The meeting was called to order at 7:35 PM by President Kim Cochran at the Chamblee Library. Approximately 31 people were present; there were no new members or visitors.

Dylan Porter had show and tell from Chunky Gal Mountain, Staurolite from Blue Ridge, GA, petrified wood from Clio, AL, flint from Dothan, AL and quartz crystals from Snellville, GA.

**SPEAKER**

Anita introduced Jay Gorday, GMS member and volunteer, as the speaker of the evening. Jay gave a power point presentation (his first) on The Volunteering Spirit, beginning by telling us about the different talks he does for groups, how he prepares, and what he takes with him. He holds various positions within GMS and volunteers at the Fernbank at the Walk Through Time in Georgia exhibit. Jay then walked through some of the events that he has volunteered for including the Stone Mountain Mineral Day, the Fernbank Dinosaur Birthday Bash, and various Science Olympiads. He then concluded, encouraging everyone to volunteer however they can. Anita presented Jay with gummy candy thumbs (since Jay collects "thumbnail" specimens), and a carved tauga nut in appreciation of his talk.

**COMMITTEE REPORTS (8:07)**

**Mary Porter - Secretary** – minutes from the August meeting were available. Martha Brown motioned to dispense with reading of minutes; seconded by Jay Gorday, the motion was passed.

**John Trimble – Treasurer** – withdrawals from the operating account totaled \$2,799.02; mini-grant checks are coming through. The investment accounts are totaled around \$200,000.00.

**Lizabeth McClain – VP Membership** – current membership is 612.

**Anita Westlake – VP Programs** – the November speaker is Olga Jarrett (GMS member) who will be walking us through a "Geology of GA" set of learning stations.

**Jay Gorday – Mineral Section** – the next meeting will be held at the Gorday's house on September 18<sup>th</sup>; the topic will be Colorado minerals. RSVP for dinner at 6:30, the meeting will start around 7:30.

**Dave Babulski – Micro-mount Section** – currently looking for a new meeting place; there is no meeting scheduled in the near future.

**Martha Brown – Fossil Section** – the next meeting will be held at Martha Brown's house on October 15<sup>th</sup>. They will talk about the Cambrian Period.

**Roxanne Lopez – Junior Section** – there will be a tip to Providence Canyon on the first Saturday in November; a geologist will be there. She is looking for adult women to

talk to her class about careers; scientific related is a plus. She will be needing volunteers for the Science Olympiad at Campbell Middle School.

**Kim Cochran – Gem Section** – if all goes to plan they will finally be making the peridot necklace they have been designing since July. The meeting will be held at Kim's house on September 24<sup>th</sup>.

**Tom Batcha – Tips & Trips** – (not present) **Kim Cochran** – have material to Tom by the 10<sup>th</sup> of October.

**George Libby – Field Trips** – had three great trips in September; Clio, Dothan and the Hackney farm. Trips for October include Graves Mountain (first weekend), and Harleyville and Glendon on the third weekend.

**Jay Gorday – May Show** – think about grab bag material when collecting; donations are always needed.

**Bill Waggener – Adopt a Highway** – the next pick-up will be held on the Saturday of Halloween weekend; costumes are encouraged, as there will be a special costume prize. There will be a trip to collect garnets after lunch.

**Bill Waggener – Education Chair** – mini-grant applications will be available in December for the 2008 – 2009 school year; he has proposed an increase in funds to permit more grants awarded. Anita Westlake and Kim Cochran have spoken to groups this month.

**Nancy Marden – Refreshments** – provided by Mary and Dylan Porter; Richard brought brownies.

**Kim Cochran – Special Events** – the annual banquet will be held on October 1<sup>st</sup> at the Colonnade restaurant; the cost is \$18.00 per person, see Kim if you wish to attend. You can pay now or the night of the banquet. Kim suggested the possibility of having the holiday party somewhere else since we are only supposed to have finger food at the library. Let him know if you have any input/ideas.

**Barbara Libby – Sunshine Chair** – (not present) let Barbara know any news, good or bad.

**Anita Westlake – SFMS** – the annual meeting/banquet will be held in Biloxi, MS on November 10<sup>th</sup>.

**OLD BUSINESS**

**Kim Cochran** – there will be a short board meeting held after the general meeting to finalize the budget.

**By-law revisions** – Jay Gorday had published proposed By-Law changes and members received them either in the mail or electronically. Unfortunately, there were several typos found. These further corrections were reviewed as proposed changes. Frank Decaminada stated that a two-thirds vote is needed one month after the publication of tonight's revisions, and motioned that we vote on the original revisions that were published last month; Anita Westlake seconded the motion. Bill Waggener stated that we would have to vote again on the new revisions; it would be "cleaner" to vote one time on all of the changes. After further discussion, Frank and Anita revoked their motions and it was decided to vote on all of the revisions after the corrections made tonight are also published.

*(Continued page 9)*

**FOSSIL SECTION MEETING**

DATE: October 15, 2007

TIME: 7:30P.M.

LOCATION: Martha & LeRoy Brown

4837 Greenway Rd., Norcross, GA 30071

PHONE: 770-448-0876 for RSVP and DIRECTIONS

Thank you to Kim for bringing cookies. We had another great meeting. The August meeting was on the Geological Time Scale. We discussed what programs we will have in the coming year. October's meeting will be on the Burgess Shale and the Cambrian Explosion.

If you have a fossil please bring it to show us.



**Martha Brown,**  
GMS Fossil Section Chair



**Junior Section**

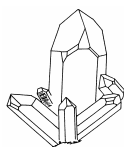
.....  
**Mineral Section**

I hope you were able to make the Mineral Section Meeting at my house. If you didn't, you missed the program on Colorado Minerals and a chance to look at all the Colorado Minerals that members brought to show off.

We will not have a meeting in October. Keep an eye out for the notice of the next meeting in your *Tips and Trips*. It should be in November, but I don't know for sure since this is being written before the meeting takes place.

If anyone would like to host a meeting or has ideas for topics, please let me know.

Thanks,  
**Jay Gorday**  
GMS Mineral Section Chair



.....  
**Gem Section**

**Monday, October 29, 2007 7:30 PM**  
**Kim Cochran's House**  
**2695 Van Court**  
**Snellville, GA 30078**

In August we finally agreed on a design for our peridot necklace. In September we were unable to work on it. At the October meeting we will make another attempt to complete the necklace. As of the time of this writing we are still looking for a new Gem Section chairman.

Supper will be served at 6:30 PM.  
RSVP 770-979-8331  
**Kim**



**No Trips this Month**

November 4 to Providence Canyon is the next trip scheduled. Check last month's or November's Tips & Trips for details. At the field trip to the Blue Ridge area near the old Hackney farms on September 1, we had a number of juniors. The mountain (or hill) near the area is now named Staourite Mountain and the gates going into the new subdivision has a staourite on them. Check out the group picture of some of the juniors with the gate behind them. The juniors were able to find a good number of pieces without much digging.

**Roxanne Lopez**  
Junior Chair

.....  
**Adopt-a-Highway Report**

Again, thank you very much to all who participated and cleaned up Highway 5 in Ballground on 07 April 07.

We will return to Ballground for the next costumed pick-up event in the fall at Halloween. The date is 27 Oct 07 at 10:00 in the morning. Please plan to join us to continue our involvement in a very mineral-rich area of Georgia.

We will eat lunch at Two Brothers BBQ after the clean-up. As an additional treat, Charles Carter has arranged a field trip to "Little Garnet Hill" in Ball Ground after lunch. We will be collecting very small almandine garnets. They are abundant and often euhedral. Collecting is easy, no digging necessary. The ground is loaded with them. This is a private location so people should not return without permission.

Respectfully submitted,  
**Bill Waggener, Adopt-a-Highway Chair**

**GMS Workday**  
**Saturday, November 10th, 2007 11:00 AM**  
**Kim Cochran's House**  
**2695 Van Court**  
**Snellville, Georgia 30078**

**Sunshine News**

OCTOBER BIRTHDAYS

- 10/1 Carol Horowitz
- 10/1 Sophie Trentini
- 10/2 Joseph Broome
- 10/3 Daniel Demko
- 10/3 Susan Heywood
- 10/3 Christine Sharpton
- 10/5 Susan Dodd
- 10/6 Harry J. Hyaduck
- 10/8 Carolyn Madden
- 10/9 Olin Banks
- 10/9 Benjamin Calderon
- 10/9 Winston Elston
- 10/10 Jack Arnett
- 10/11 Michael Brady
- 10/12 David Murray
- 10/14 Laura Ray
- 10/19 Lara Rogers
- 10/20 Marcy Hess
- 10/21 Kim Cochran
- 10/21 Tony Madden
- 10/23 Richard Graveline
- 10/23 Hugh Wilkie
- 10/25 John Franetic
- 10/25 Abigail Nichols
- 10/26 Sebastien Fuchs
- 10/26 Robert Hudgens
- 10/30 James Musick



Two or three years ago the GMS received some great maple cabinets of study quality mineral specimens and for two or three years I have intended to pull out the drawers and arrange the material to be of use. How much have I accomplished? Zilch!

So I am planning a work day similar to the one when we stained the sheds. We will have a covered dish lunch. Afterward we will pull the drawers and arrange them in proper order. As an extra incentive there will be a 100 lot auction for those who helped. Let me stress , FOR THOSE WHO HELPED! Let us pray for no rain!

**Kim**

.....  
**MEMBERSHIP**

Please join me in welcoming the following new members to Georgia Mineral Society: John and Frances Franetic and Jacob Greene of Gainesville, GA; Ray King of Tunnel Hill, GA; Daniel Miller of Heiskell, TN; Mary, Steve, Nick, and Kailey Page of Ooltewah, TN; Ed Reid of Acworth, GA; Kathy, Gregory, and Elena Smart of Kennesaw, GA; and Victoria Torley of Fayetteville, GA.

We're glad to have you join us, and hopefully we'll get to meet all of you at a meeting or field trip very soon.

Don't forget to send in those renewals on a timely basis, everyone, and please let me know if you have any e-mail or address changes. You may e-mail me at [mgm5258@netzero.net](mailto:mgm5258@netzero.net) or call me at 770-439-5756.

Happy Rockhounding!



**Lizabeth McClain**  
**Executive VP/Membership**

.....  
**Micromount Section**

A Micromount Section Meeting is scheduled for October 17, 2007 at 7:30 PM. We are trying for a meeting site at the Frenbank Science Center (Not the Fernbank Museum), however this has not yet been finalized. Please call the Micromount section Chair, Dave Babulski at 678-580-2475 the week of October 8th for confirmation of the meeting place and time. The topic will be "Getting Started in Micromounting".

**Dave Babulski**  
**Micromount Chair**

OCTOBER 2007 ANNIVERSARY

George and Barbara Libby - 46 years

Joan White had a Hernia Operation. Pray for a quick recovery. Kim Cochran has been under the weather for a while, send some prayers his way that he kicks it soon as it is wearing him out.

Please send information on news you would like to share with GMS. My email address is [angelonsite@bellsouth.net](mailto:angelonsite@bellsouth.net).

Thanks. You are all in my prayers, be well and you will hear from me next month.

Everybody have SUNSHINE in your life.

**Barbara Libby,**  
**Sunshine Chair**

### Staurolite Mountain Field Trip

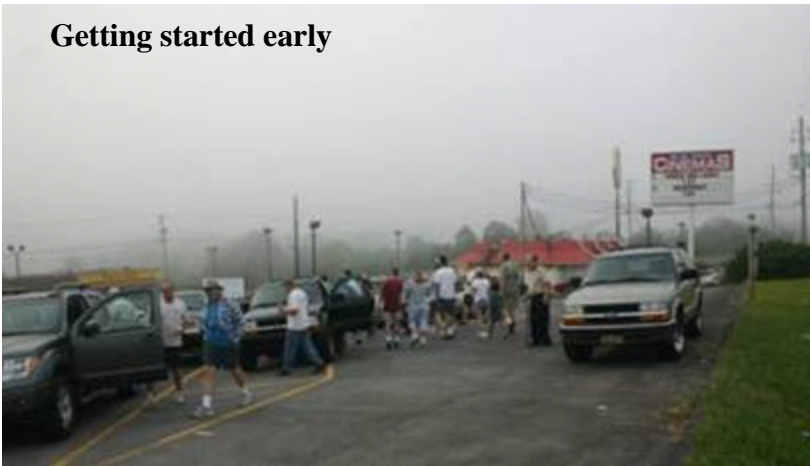
by Audie/Anne Bair CCGMS

### Staurolite Field Trip, Hackney Farms, Blue Ridge GA September 1<sup>st</sup> 2007.

Hello Fellow Rockhounds,

The field trip was successful for finding Staurolites...everybody found some. Here are some web sized pictures for your viewing from the trip. Some of you may remember the place but it has changed hands and is now being developed. It's new name is Staurolite Mountain. There were about 50 people who showed to collect one last time. Photos by Audie/Anne Bair CCGMS photographer.

Getting started early



The Staurolite gate

Getting instructions



Discussing Rocks with the realtor



George Libby and how he scoops rocks.



Kim Cochran



Beverly Sapp



A real keeper

A chimney with out a house.



Lotsa goodies



Photo of a picture take



## The Micromount Corner

### CACOXENITE

This month we will investigate one of the prettier “flowers” of the mineral kingdom, the mineral Cacoxenite. Chemically, Cacoxenite is a hydrated iron, aluminum, phosphate hydroxide. Although it crystallizes in the hexagonal class, you will usually find Cacoxenite manifest as spherical radial aggregates of acicular prismatic crystals radiating from a central point. It may also occur in acicular bundles, tufted aggregates or as cement between mineral grains and as a vein filling mineral.

Usually yellow or yellow-brown in color, Cacoxenite has earned the nickname “frozen sunshine”. Usually found in the oxidized zone of iron deposits, Cacoxenite is considered a mineral of secondary origin. In this regard, associated minerals are: Limonite, Dufrenite, Rockbridgeite, Beraunite, Strengite, Wavellite and Magnetite. Although found all over the world, the type locality is the Hrbek Mine, St. Benigna, Central Bohemia in the Czech Republic. The mineral derives its name from the Greek kakos meaning “wrong” and xenos, meaning guest. The “bad guest” name is in reference to the high prosperous content of Cacoxenite which tended to make cast iron smelted from ore containing Cacoxenite somewhat brittle. The mineral is very soft, with a hardness of only 3 – 3 ½ so great care must be taken when handling specimens.

Although it is considered relatively rare as a mineral species, specimens are readily available from mineral dealers for a reasonable cost. Georgia has some famous mineral localities for Cacoxenite: The Catersville District in Bartow County, Girard District in Burke County, Graves Mountain in Lincoln County and Indian Mountain in Polk County. Shown below are some photomicrographs of Cacoxenite from Indian Mountain, Polk County, Georgia.

Until next month, may all your skies be blue and all your vugs be crystal filled.

**Dave Babulski**  
Chair Micromount Section

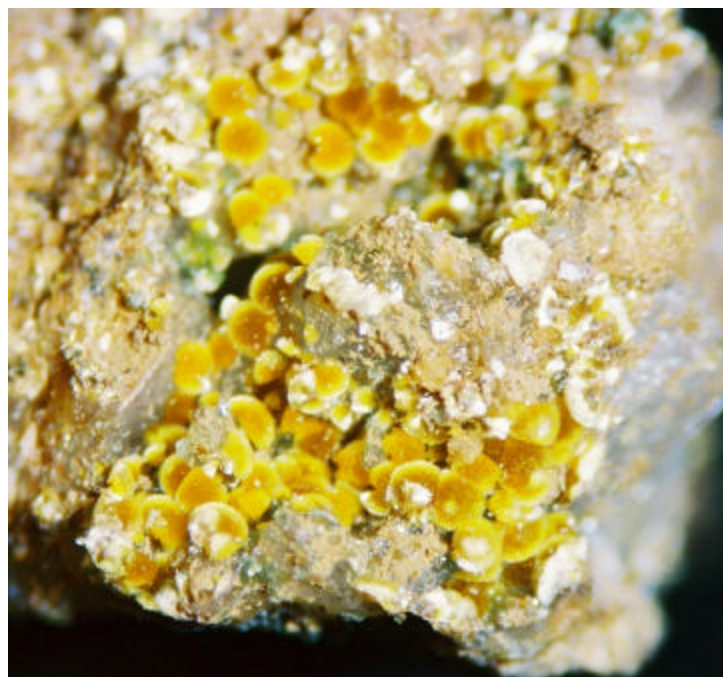


Figure – 1  
Cacoxenite on quartz and limonite  
Indian Mountain, Polk County, Georgia.  
Photomicrograph at 25X

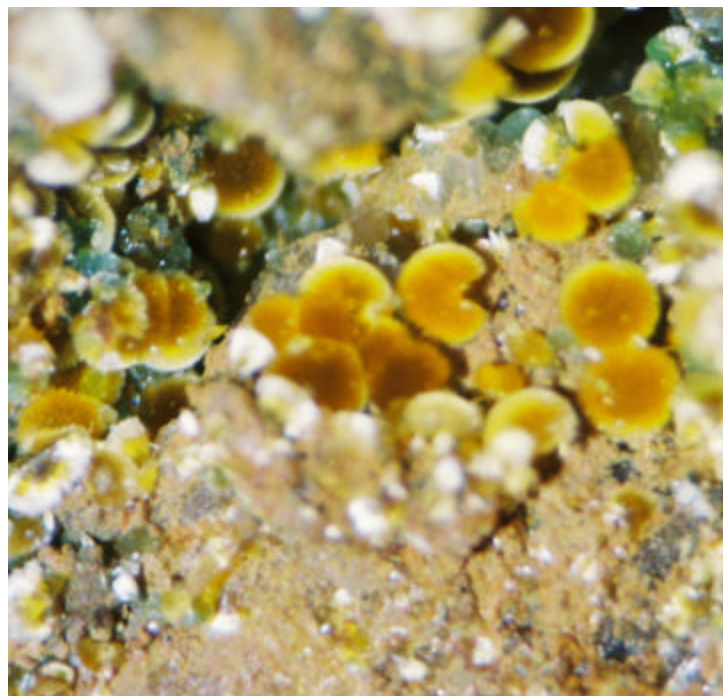


Figure – 2  
Cacoxenite on quartz and limonite  
Indian Mountain, Polk County, Georgia.  
Photomicrograph at 25 X

October 2007

**Documented Sources**

The following bibliography is in reference to last month's Micromount Corner article on Iridescent Hematite.

**BIBLIOGRAPHY  
Books and Journals**

Barwood, Henry, Phosphate Minerals at Graves Mountain, Georgia, Georgia Mineral Society.

Cook, R.B., Famous mineral localities: the mineralogy of Graves mountain, Lincoln Co., Georgia. (1985) Mineralogical Record, 16(6), pp: 443-458.

Flora, Jim, The Minerals of Graves Mountain, Georgia, Georgia Mineral Society

Gabor, Catherine, Brazilian Hematite, Mineralogical Record, (March/April, 2000)

Hirai, Hisako and Nakazawa, Hiromoto; Grandite garnet from Nevada: conformation of origin of iridescence by electron microscopy and interpretation of a moire'-like texture, (1986) American Mineralogist, vol 71, pp: 123-126

Josefina Perez-Arategui, et al, Luster Pottery from the Thirteenth Century to the Sixteenth Century: A nanostructured Thin Metallic Film, (Feb, 2001), Journal of the American Ceramic Society, Vol, 84, Issue 2, pp: 442-46

Kennard, T.G., Howell, D.H., Types of Coloring in Minerals, (1941) American Mineralogist, vol. 26, pp: 405-421

K.Z. Baba-Kishi, et al, Observation of the Structure of Iridescent Surface layer on Chalcopyrite, (2005), Microscopy Microanalysis 11 (Supplement 2) Microscopy Society of America, pp: 1770-1771.

Kinoshita, Shuichi, et al, Mechanisms of Structural Colour in the Morho butterfly: Cooperation of regularity and irregularity in an iridescent scale, (2002) Proceedings of the Royal Society, pp: 1417 – 1421

Nadin, Elizabeth, The Secret Lives of Minerals, Engineering and Science Number 1 (2007), California Institute of Technology, pp: 19-20

Nakai, Hiroto, et al, Origin of Iridescence in Grandite Garnet, (1984) American Mineralogist, vol. 69. pp: 896-901

Saito, Akiria, et al, Morho – blue principle and its lithographic reproduction, (2003) Patent Application (Japan patent office) No. 2003-391572

Snow, M.R., Pring, A., The Mineralogical Microstructure of Shells: Part 2. The Iridescence Colors of Abalone Shells, (November, 2005) American Mineralogist; v. 90 No. 11-12,

pp 1705-1711.

**Personal Communication**

Rossmann, George, Professor of Geology, California Institute of Technology

Gray, Julian, Curator, Tellus: Northwest Georgia Science Museum, PO Box 3663, Cartersville, Georgia 30120

**Information from the Internet**

Hematite; [www.mindat.org/min-1856.html](http://www.mindat.org/min-1856.html)

Diffraction; thin-film interference; <http://physics.bu.edu/~duffy/PY106/Diffraction.html>

Synthesis of metal oxide thin films; <http://www.patentstorm.us/patents/535485-description.html>

Thin Film Interference; <http://www.fas.harvard.edu/~scidemos/LightOptics>

.....

**Meeting Minutes** (continued)

**NEW BUSINESS**

**Kim Cochran** – received a post card from The Gem Shop selling 2008 mineral calendars if anyone is interested.

**John Trimble** – brought a 2008 mineral calendar published by Lithographic that he got for \$10.00. If anyone wants one, he could possibly order a bulk shipment.

**Bill Waggener** – read a thank you note that he received from the people at Stone Mountain for our participation in their Mineral Day celebration.

**DOOR PRIZES (8:47) – Margaret Ronan** – George Libby and Dylan Porter were recognized for providing door prizes; numbers were called.

If you have any awards ideas talk to Carl Ziglin; let him know why the person should be given an award.

A motion was made to adjourn meeting at 8:57 PM. It was seconded, and unanimously approved, ending the general meeting. Twelve board members met to vote on the proposed 2007 – 2008 budget. John Trimble had sent the proposed budget to the board members and asked for any corrections; he received none and made two editorial corrections. John also provided copies of the form he created for reimbursement and asked that the account codes he assigned be used on the form. Anita suggested that he include the codes on the form for reference. A motion was made and seconded to accept the proposed 2007 -2008 budget; it was unanimously approved and the board meeting was adjourned at 9:05 PM.

Respectfully submitted,  
**Mary Porter, Secretary**

SFMS Field Trip Committee

**Graves Mountain "Rock Swap and Dig"**

**8 am to 6 pm, Friday, October 5, 2007**

**8 am to 6 pm, Saturday, October 6, 2007**

**8 am to 6 pm, Sunday, October 7, 2007**

"Your society is invited to field collect minerals at Georgia's premiere mineral location!"

The SFMS Field Trip Committee has been in contact with the caretaker in charge of Graves Mountain, Clarence Norman Jr., in regard to his plans to hold two separate three day digs and rock swaps on the Mountain during April 27, 28, & 29, 2007 and during October 5, 6, & 7, 2007. He will have the mountain open for collecting from 8 am to 6 pm each day. All participants must stop at the welcome table in the Hospitality tent to sign a liability release and make a small contribution to defray the cost of opening the mountain and providing port-o-lets. There will be several golf cart type, four wheeled vehicles available to transport those participants who have trouble walking long distances. The dig will cease and everyone is expected to be off the mountain by around 6 pm each day. Participants will be allowed to park in a designated area on the mountain.

**Rock Swap and Hot Food/Drinks:**

Junior will set aside an area in the upper parking lot for tables to be setup for daily rock swaps. Anyone who would like to setup a table(s), please contact Junior at the phone numbers listed below. Hot food cooked on the grill, cold drinks and chips will be available for purchase on the mountain during all three days of these events. Don't forget to bring some extra money to buy the special "Graves Mountain Rock Swap and Dig" T-shirt! THESE DIGS ARE OPEN TO ALL SFMS CLUBS and the GENERAL PUBLIC!

**Contact Information:**

Clarence Norman Jr. - 706.359.3862 (his business) or 706.359.2381 (his home)

**DIRECTIONS:** From Atlanta's I-285, take I-20 east to the exit for Washington, GA SR 78 (SR 10, SR 17) and turn left. Travel north to Washington, turn right onto SR 378 and drive 11 miles to the Graves Mountain area. The entrance to Graves Mountain is on your right about 8/10 mile past the Lincoln county line sign. The entrance is a paved road that goes through a gate and up a hill. Please park along the access road and then proceed to the "Welcome Tent" at the end of the pavement to obtain a liability release form and to make a donation for the portable bathrooms, etc.

SFMS Field Trip Committee:

Please reply by e-mail to: [dmc@gamineral.org](mailto:dmc@gamineral.org)

Jim Flora - SFMS Field Trip Committee Chair

Graves Mountain code of conduct!

- Park your vehicle in the designated area(s) only.
- CHILDREN WILL BE ALLOWED DURING THE "Rock Swap and Dig", IF EACH CHILD IS UNDER CONTINUOUS ADULT SUPERVISION!

- ALL pets must be kept under control and on a leash.
- The Graves Mountain caretaker, Clarence Norman Jr., has final and absolute say as to where you may safely work.
- Ladders or power tools of any kind will not be allowed. (HAND TOOLS ONLY!)
- STAY AWAY FROM ALL HIGH WALLS!!
- NO REPELLING OFF OF ANYTHING!
- NO ONE IS ALLOWED TO DRIVE THEIR VEHICLE ON ANY PART OF GRAVES MOUNTAIN BEYOND THE PARKING AREA! (The caretaker must accompany anyone driving beyond the parking area!) EVERYONE NEEDS TO BE OFF THE MOUNTAIN BY DUSK. (Absolutely no one is allowed on Graves Mountain after dark.) Please protect our ability to field collect at Graves Mountain! Report Violations to: Clarence Norman Jr. 706.359.3862 (his business) or 706.359.2381 (his home) All reported violations will be held in strict confidence.

.....

The Southeast Federation of Mineralogical Societies, Inc  
 The Friendly Federation - Founded in 1976 to serve.  
**DMC Program of the SFMS Field Trip Committee**  
**An Official Field Trip of The Lowcountry Gem & Mineral Society - Charleston, SC(HOST)**  
**An Official Field Trip of the GEORGIA MINERAL SOCIETY**

**October 20, 2007**  
**Lafarge Cement Quarry**  
**Harleyville/Holly Hill area, South Carolina**

**WHAT:** Fossil Collecting Trip  
**WHERE:** Lafarge Cement Quarry in the Harleyville/Holly Hill area, South Carolina  
**WHEN:** October 20, 2007

**COLLECTING HOURS:** Participants should start arriving at 7:00 A.M. to check-in, sign a release form, and receive a safety briefing. The dig will be from 7:30 A.M. to 1 P.M. There is no fee for this dig. If children come to the dig, they MUST be in CLOSE proximity to their parent(s) at all times. The mine representative stated no young children are permitted in the mine (he did not elaborate on how young). All young people under 18 must be with an adult/parent at all times. This is a working mine. Nothing was said about pets; but experience tells me to advise against bringing them.

This mine is primarily noted for its Eocene marine fossils including scallops, oysters, brachiopods, echinoids, shark teeth, ray teeth, etc.

**SPECIAL CONDITIONS:** Because this is a working mine, safety is most important. Hard hats and safety glasses are required and will be supplied by the Lafarge mine. It is also recommended that you wear safety shoes (sturdy shoes), gloves, and appropriate outer clothing. Everyone must sign a release form prior to going into the mine. We will meet at our Lafarge Cement Quarry hosts "work trailer" to sign release forms and get a safety briefing before entering the

**WHAT TO BRING:** Bring something to collect into, picks, hammers, small shovels, a bag lunch, and plenty of drinking water. If the weather is nice, we may be able to drive into the mine, otherwise we walk (approximately a quarter mile or more). Also, bring a lunch since there are no restaurants close by.

**TRIP CONDITIONS:** We will be limited to the first 40 for this field trip and there will possibly be other organizations collecting with us bringing the total to around 100 or more. Lafarge only opens up the mine to collectors once per quarter. Because of this condition, club Field Trip Chairman Mark Easterbrook will be the point of contact for both the mine and the DMC participants. Mark's email address and phone are as follows:

**CONTACT INFORMATION:** Mark Easterbrook - Email: mark.easterbrook@erm.com; Home Phone (843) 552-1049; Cell Phone: (843) 276-4016. If you would like to attend this trip, please contact Mark by no later than October 13. If you send an email, please put "DMC October Trip" in the subject line, so he can expedite completion of the list of participants to provide to Lafarge. If there is a change in the number allowed or additional information provided, we will pass along a message for posting as soon as possible. The first 40 responders will be included on the sign-up list for the trip.

**LODGING:** For nearby lodging information, please check [www.metrotravelguide.com/hotels/saint\\_george/sc/usa](http://www.metrotravelguide.com/hotels/saint_george/sc/usa) for a listing of nearby motels. If you do not have access to the internet, please let me know and I can provide you a motel listing and contact information.

**DIRECTIONS:** From Interstate 26 (either direction) take exit 177 (Hwy. 453 Holly Hill/Harleyville). When you reach the top of the ramp, turn towards Harleyville. There is a road sign pointing the direction. The mine is less than a mile on the right. If you go past the mine, the Ashley Lodge is not far on the left. When entering the plant off of Hwy. 453 (Judge St.) you should be greeted by a mine representative who will instruct you on where to go. Otherwise, proceed past the scales and the Administration offices and parking lot if no mine representative is there. Turn right at the first intersection. Follow that road and the trailer is down near the end on the right. This area can be very muddy, so prepare accordingly. The mine may be muddy. I was also advised that inclement weather could cancel this trip with little warning. However, they have not done so in recent memory. I will provide updates as to the status.

"Field trips are open to all members of associated clubs of the DMC program of the SFMS Field Trip Committee and to all members of SFMS member clubs who have provided their membership with SFMS liability insurance. Because of insurance requirements, members of the GENERAL PUBLIC are NOT invited on this or any DMC program field trips!"

DMC Program / SFMS Field Trip committee's purpose: To collect field trip information from it's member societies; schedule and coordinate field trip dates; disseminate field trip information to all member clubs so that each member society may publish this information as one of their "official" scheduled field trips.



"GMS FIELD TRIP"

**Standard Mineral Company  
Glendon, North Carolina  
Saturday, October 20, 2007  
8:00 AM till Noon**

The Georgia Mineral Society has again been invited to participate in one of the best and most interesting field trip opportunities in the Southeast. If you have not collected here in the past, you should not miss an opportunity to go to this quarry for quality specimen/cabinet grade pyrite. The Glendon pyrophyllite mine is an open pit quarry that has produced many perfect pyrite crystals up to 4 inches on a side and 6 inches long!! Generally, you can find a cube approaching 2 inches or so and a bunch of others in all shapes and sizes up to one inch or more. The pyrite cubes are located loose on the surface or in seams down a foot or less in the bottom of the quarry floor. If it hasn't rained for some time, the light gray pyrophyllite soil seems to coat everything with a gray goop that makes it difficult to identify the pyrite crystals on the surface. Using a VERY GOOD metal detector makes the hunt almost a "no brainer"! A basic metal detector may offer some help in finding those cubes containing the most iron but just digging anywhere in the quarry floor will probably yield much quicker results. You may also find small greenish blue fluorite crystals in crevices on some of the larger boulders strewn about the middle of the quarry floor.

**Collecting:** pyrite cubes, pyrite cubes in matrix, green fluorite, and micro-minerals.

**DIRECTIONS:** Take 1-85 North to Charlotte, North Carolina. On I-85 North of Charlotte, either exit the interstate at Lexington on to US 64 and travel through Asheboro to SR 42. Turn right and follow SR 42 past Coleridge and Bennett and SSR 902. Then SR 42 makes a left towards Carbondon and Sanford. Before Carbondon there is a flashing yellow light @ SSR 1006. Turn right onto SSR 1006/ Glendon-Carthage road and go south to the mine which will be on your left. If you spend the night at Sanford you will be traveling West on SR 42 and have to make a left on SSR 1006. Sanford, which is 12 miles to the East of Glendon, is probably the best bet for finding a good motel room and nearby restaurants.

George Libby  
GMS Field Trip Chair

## A Fossicking Experience in Outback Australia

by Sir Paul Howard

Fossicking is an Australian and New Zealand word that means to look for, or search for gold or gemstones.

While visiting my rockhound friend who runs the Rock shop at Katherine, in the state of Northern Territory, I expressed the desire to go fossicking on several cattle stations in the northern part of the Territory while on our way to Western Australia. This was in June, the middle of the dry season in north Australia.

My friend's rock and gift shop specialises in local rocks and articles made from them. He is a talented artist. He told me he would like to return to a cattle station about 150 Kilometres away, where there is an abundance of agate. He knew the manager there. "Would I like to come?" We arranged to go there on Monday morning to fossick for agate at a location he had been to 11 years before. We planned to stay for five days.

When we arrived, the manager came to greet us and allocated a spot for us to camp down by the creek near some large river gum trees. We set up our motorhome and his caravan on a fine but cloudy day and then wasted no time driving to a location he was sure he could find again on this 250,000 hectare property. (Half a million acres). It was 20 to 30 kilometres away, through several gates and across creeks and gullies on black soil tracks. Once we had found this spot, it was not hard to find agates. They were in the windrows along the graded track, spread over a large area on a burnt paddock and in the stormwater gullies and washaways from the big deluge that occurred in March 2007.

The countryside in this area of Australia is very flat with hills of a mesa shape which indicates the land level was much higher millions of years ago. Evidence of the severe drought in Australia prevailed.

Nodules and broken pieces of agate up to 100mm were easy to find. Some broken pieces displayed concentric banding right to the centre of the nodule, others had a thin banding on the outside of the nodule with a crystal centre, and some had suspended agate centres. Banding on some was unusually positioned in relation to the outside shape of the nodule. This character makes these agates very unique. Colours were pale to dark pinks, white, cream and maroons with lots of lace pattern.

We gathered everything we could in the first couple of hours, and then it started to rain. From the weather forecast that morning we expected rain that night, but it came early. We hurried out of there as quickly as we could; 5mm of rain on these black soil tracks, makes them impassable. That night steady soaking rain fell all night and was to continue

for several days. So my trip leader went back to his shop and several other commitments for the rest of the week. He returned just on dark on the Saturday. In the meantime we were stranded on wet paddocks with a four ton vehicle for a week. The manager of the station told us that this was the first time it had rained in June since 1985 and before that, it was in 1936. We were unfortunate to be there during this unusual wet weather. Our motorhome is fully self-contained with water, electricity and adequate food supplies for ten days. Mustering on the station had just begun. This cattle station runs about 10,000 cattle managed by 20 ringers with 50 horses.

There were 1820 Brahman cattle in two stockyards standing in the rain. Two died from the cold wet conditions, the rest were moving around in about 150mm of mud. In spite of the rain, I put on my wet weather gear and went fossicking up Agate Creek, the name given to one of the hundreds of creeks and gullies on this huge property. This creek is up to 30 metres wide in places and showed evidence of the five to six metre flood that surged down it in March this year. From its name, I presumed that I could find agate in it. Over the next few days I did find about 20 kilos of agates and jaspers by walking about ten kilometres up the creek. I saw lots of kangaroos; and saw an eagle dive from the sky to attack a large bird resting in a tree about 100 meters ahead of me. I witnessed the fight between them. It was awesome. You can guess who won. A heap of feathers and bones was all that was left. There are some large billabongs with deep water along this creek during the wet season. They had all dried up because of the drought. Fortunately for me, there are no crocodiles in this creek but I carried a hand held UHF "walkie talkie" with me, just in case.

None of the agates I found in this creek were similar to the first location, the colours were much darker and there were some beautiful pieces of jasper and jaspagate I just could not leave there as a 'leverite' (Leave it right there) because the colours were so beautiful. When I return home in October, I will have plenty to cut and polish. On the Sunday, in sunny conditions again, the countryside changed colour into a profusion of yellow flowers as the wattle trees burst into bloom. We checked out some of the new locations we were told about, but they were barren of agates. There were plenty of rocks, some jaspers, but no agate. We returned to our first location to gather more agate.

We continued our journey to Western Australia on the Monday morning, because the tracks on other cattle stations I wanted to visit were too wet from the recent rain to drive on.

*Sir Paul Howard has visited GMS on at least two occasions to give talks on agates. His nickname is "The Agate Man".*  
Anita Westlake

**THE NORTH ATLANTA CHRISTMAS SHOW**

**The North Atlanta Trade Center  
Norcross GA  
December 7-9, 2007**

This is a personal invitation to all our friends and fellow rock hounds to attend the show in December at the North Atlanta Trade Center.

As most of you are aware, this show has been held for the past 13 years by the GA Mineral Society. We have chosen to continue this popular show after they decided that they needed a rest from doing two shows a year. This is a great time of the year for a show. Due to the many years of hard work by the GMS members, this show has always been good for the dealers and the customers.

We are Janice & Richard Hightower, owners of "The Stones & Bones Collection". We formed the LLC of Mammoth Rock Shows to promote the show. Having done trade shows for over 20 years, we are attempting to take the "best" of our experiences and incorporate them into this show. In order to help defray the expense of hosting a show, we will be charging a minimal admission fee of \$3.00

The rock clubs and the rock shows need each other. Obviously shows depend on attendance to survive and clubs depend on steady interest and new members to also survive. One of the best ways to advertise and educate the public of our hobby is through trade shows. We will be happy to provide flyers to the visitors about the various rock clubs if the clubs will get them to us. Clubs that would like a meet and greet table just need to contact me in advance of the show. We would be happy to provide the table.

We want you to come and support us and bring your friends. We are offering a free admission coupon, which you can duplicate as many times as needed, and use for family members and friends. This coupon is for ages 16 and above, (children below 16 with adults are free). Also this coupon will be your entry for one of the three "Very Nice" door prizes.

As this is our first year, we wanted to make it special by offering some very nice door prizes. We will be drawing on Sunday evening for a Mammoth tusk, a large Seven Shade Jade vase, and a set of diamond earrings. In addition to these great door prizes, we will be awarding a \$25.00 gift certificate every hour of the show.

There is a highly sought after exhibit that has been touring the country for years and will finally make its "First Ever" appearance in Georgia! Many of you have seen this exhibit at other shows and will know what to expect. For those of you who have never seen it, you are in for a treat. Imagine, if you will a marvelous food banquet laid out for a large family gathering. Everything looks wonderful and mouth-

watering. Now imagine that every single item on the table is a rock.

Each year, Lois & Bill Patillo of Robstown, TX, add new items, so each time you see the table there will be something new. They will both be at the exhibit during the show to greet and explain the many different food items and where they came from. Please stop by and welcome them to our area and enjoy the exhibit.

We have worked really hard to make this a great show and cordially invite you to be a part of it. We look forward to seeing you there.

Sincerely,

Richard & Janice Hightower



**Annual Mineral Symposium**

Saturday November 3, 2007 8:30am - 4:00pm  
Holiday Inn Cartersville

Sponsored by the Southeast Chapter Friends of Mineralogy and

Tellus: Northwest Georgia Science Museum  
\$18.00 (includes Coffee Reception and Lunch)

***Mining in the Southeast***

The South has a long mining tradition, involving ores such as gold, mica, iron, granite and marble. This year's topic will cover historic and current mining activities in the region.

Confirmed speakers

- Stan Bearden - Cartersville Mining District
- Travis Paris - Gold Mining in the Southeast
- Tom Batcha - Iron Mining and the Furnaces of the South
- Bumpi Barwood - Indian Mountain

Schedule

- 8:30 - 9:00-Coffee Reception
- 9:00 - 10:00-Registration, Welcome
- 10:00 - 12:00-Talks
- 12:00 - 1:30-Lunch
- 1:30 - 3:00-Talks
- 3:00 - 4:00-Business Meeting

Jose Santamaria, Executive Director  
Tellus: Northwest Georgia Science Museum  
PO Box 3663  
Cartersville, Georgia 30120  
Ph: 770.386.0576 x401  
Fx: 770.386.0600  
www.tellusmuseum.org

**Southeastern Rock and Gem Shows**

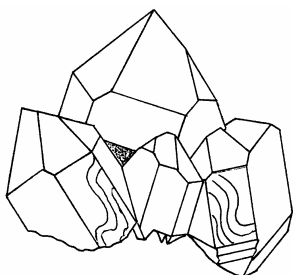
**12-14--HUNTSVILLE, ALABAMA:** 39th annual show; Huntsville Gem & Mineral Society; von Braun Center, 700 Monroe St.; Fri. 10-6, Sat. 10-6, Sun. 12-5; adults \$2; 30 national vendors, fine and costume jewelry, lapidary material, specimens, equipment, demonstrations, displays, "rock food table," fluorescent rock display, children's activities; contact Lowell Zoller, 3027 Flint Mill Run, Hampton Cove, AL 35763, (256) 534-8803; e-mail: Lzol@comcast.net; Web site: [www.huntsvilleqms.org](http://www.huntsvilleqms.org).

**13-14--ORLANDO, FLORIDA:** 16th annual show, "Fossil Fair"; Florida Fossil Hunters, Central Florida Fairgrounds, Bldg. A, 4603 W. Colonial Dr.; Sat. 9-5, Sun. 10-4; adults \$3, children \$1; fossils, rocks, gems, minerals, artifacts, related equipment, books, silent auctions, raffles, children's dig pit; contact Valerie First, 4603 W. Colonial Dr., Orlando, FL 32708, (407) 699-9274; email: vjfirst@aol.com; Web site: [www.floridafossilhunters.com](http://www.floridafossilhunters.com).

**19-21--FRANKLIN, NORTH CAROLINA:** 18th annual show, "Leaf Looker's Gemboree"; Gem & Mineral Society of Franklin, Franklin Chamber of Commerce; Macon County Community Bldg., U.S. 441S; Fri. 10-6, Sat. 10-6, Sun. 11-5; adults \$2, children under 12 free; gem and mineral dealers from across the United States; contact Tony Angel, Franklin Chamber of Commerce, (800) 336-7829.

**18-21--FRANKLIN, NORTH CAROLINA:** Show, "Whistle Stop Gemfest"; South East Gemshows; Whistle Stop Antique Mall, 1281 Georgia Rd. (Hwy. 441 N); Thu. 9-6, Fri. 9-6, Sat. 9-6, Sun. 9-6; free admission; faceting and cabbing rough, opal, equipment, fossils, gemstones, handcrafted jewelry, minerals, supplies, tools; contact Mark or Patricia Smith, P.O. Box 14577, Augusta, GA 30919, (706) 490-4515; e-mail: [gemshows@bellsouth.net](mailto:gemshows@bellsouth.net).

**19-21--KNOXVILLE, TENNESSEE:** 17th annual show; Knoxville Gem & Mineral Society; Kerbel Temple, 315 Mimosa Ave.; Fri. 10-6, Sat. 10-6, Sun. 11-5; adults \$3, children under 12 free; geological materials identification day Sat.; contact Jim McCutcheon, 1519 W. Woodshire Dr.; Knoxville, TN 37922, (865) 966-5468; e-mail: jdmccut@aol.com; Web site: [www.discoveret.org/kgms/](http://www.discoveret.org/kgms/).



**Georgia State Park Events**

**Geology Day**  
Saturday, October 13; 9:00 am -2:30 pm  
**Panola Mountain State Park - Stockbridge**  
A professional geologist will lead this lesson on the creation of Panola Mountain and Stone Mountain, as well as Georgia's turbulent geologic past. Many plants will be identified along the guided hike. Register in advance. \$5 plus \$3 parking. 770-389-7801.



**Fernbank Museum of Natural History**

76 Clifton Rd. NE  
Atlanta, GA  
404.929.6300

For details on these exhibits, films, and events, please visit our website at <http://www.fernbank.edu/museum/>

**On Exhibit:**

*Frogs: A Chorus of Colors*  
*Nature's Jewels: Butterflies and Other Insects (photography)*  
Opening October 15:  
*APALACHICOLA RIVER: An American Treasure (photography)*



**Upcoming Public Programs:**

- A Beautiful Mind Film Screening and Discussion.** Tuesday, October 9, 7 p.m. – 10 p.m. Free, reservations required, 404.929.6400.
- Members Exclusive Behind-the Scenes Tour of Frogs: A Chorus of Colors.** Tuesday, October 9, 7 p.m. – 8:30 p.m. \$10 plus membership.
- Bugs, Bats and Bones Day.** Saturday, October 20, 10 a.m. - 2 p.m. Included with admission or membership.
- Lecture: Dinosaurs Underground and Other Burrowing Reptiles, Dr. Anthony J. Martin.** Tuesday, October 23, 7 p.m. Free, reservations required, 404.929.6400.
- Cub Scout Day.** Saturday, November 3, 10 a.m. – 2 p.m. Included with admission or membership. Cub Scouts in uniform receive ½ off child's Museum admission, valid 11/3/07 only.

**Now Showing in IMAX:**

**(Check our website for special screenings)**

*Wired to Win*  
*Hurricane on the Bayou (closes June 29)*  
*Coral Reef Adventure (opens June 30)*

**Martinis and IMAX:**

Friday evenings, 5:30 p.m. – 10 p.m.

# October 2007

Sun	Mbn	Tue	Wed	Thu	Fri	Sat
	<b>1</b> Dinner Meeting at Colonnade Restaurant	<b>2</b>	<b>3</b>	<b>4</b>	<b>5</b>	<b>6</b> Graves Mountain Rock Swap
<b>7</b>	<b>8</b>	<b>9</b>	<b>10</b>	<b>11</b>	<b>12</b>	<b>13</b>
<b>14</b>	<b>15</b> Fossil Section Meeting	<b>16</b>	<b>17</b> Micromount Section Meeting	<b>18</b>	<b>19</b>	<b>20</b> Field Trips: Glendon, NC Harleyville, SC
<b>21</b>	<b>22</b>	<b>23</b>	<b>24</b>	<b>25</b>	<b>26</b>	<b>27</b> Adopt-A-Highway
<b>28</b>	<b>29</b> Gem Section Meeting	<b>30</b>	<b>31</b>			



Tom in the Geology lab at Fernbank for the Dino Birthday Bash



Bill at the GMS Table at Fernbank for the Dino Birthday Bash

THE GEORGIA MINERAL SOCIETY, INC.

P.O. Box 15011

Atlanta, Georgia 30333-5011

[www.gamineral.org](http://www.gamineral.org)

**MEMBERSHIP APPLICATION**

Name: \_\_\_\_\_ Birthday: month/day \_\_\_\_\_

Email: \_\_\_\_\_

Spouse: \_\_\_\_\_ Birthday: month/day \_\_\_\_\_

Spouse's email: \_\_\_\_\_

Children's Names & Birthdays: mo/day/yr (residing at home): \_\_\_\_\_

Address: \_\_\_\_\_

City: \_\_\_\_\_ State: \_\_\_\_\_ Zip+4: \_\_\_\_\_

Home Phone (s): \_\_\_\_\_ Cell Phone(s): \_\_\_\_\_ Office Phone(s): \_\_\_\_\_

Occupations: \_\_\_\_\_

Hobbies, Interests : \_\_\_\_\_

**SPECIAL INTEREST GROUPS AT GMS: (Check all that apply)**

Mineral Section

Micromount Section

Fossil Section

Junior Section

Gem Section

Electronic Newsletter

Dues for New Members (Single, Couple, Family) are \$25.00 per Society year. (\$20.00 + \$5.00 Initial Processing Fee)  
Renewal Dues are \$20.00 per Society year. (due 12 months from the date of joining and every 12 months thereafter)  
Reinstatement Dues (For Expired Membership) are \$25.00 (\$20.00 + \$5.00 Reinstatement Fee).

FAMILY MEMBERSHIPS ARE FOR THE IMMEDIATE FAMILY INCLUDING CHILDREN RESIDING WITH PARENTS.  
CHILDREN UNDER 18 YEARS OF AGE ARE CONSIDERED JUNIOR MEMBERS.

PLEASE MAKE CHECKS PAYABLE TO THE GEORGIA MINERAL SOCIETY, INC.

**THE GEORGIA MINERAL SOCIETY, INC.**

**P.O. BOX 15011**

**ATLANTA, GEORGIA 30333 - 5011**

**ADDRESS CORRECTION REQUESTED**

**PLEASE FORWARD**

**FIRST CLASS**

